



Shared Prosperity Dignified Life



Sudan National Gender Lens Pocketbook 2022

© 2023 United Nations
All rights reserved worldwide

Photocopies and reproductions of excerpts are allowed with proper credits.

All queries on rights and licenses, including subsidiary rights, should be addressed to the United Nations Economic and Social Commission for Western Asia (ESCWA), email: publications-escwa@un.org.

The findings, interpretations and conclusions expressed in this publication are those of the authors and do not necessarily reflect the views of the United Nations or its officials or Member States.

The designations employed and the presentation of material in this publication do not imply the expression of any opinion whatsoever on the part of the United Nations concerning the legal status of any country, territory, city or area or of its authorities, or concerning the delimitation of its frontiers or boundaries.

Links contained in this publication are provided for the convenience of the reader and are correct at the time of issue. The United Nations takes no responsibility for the continued accuracy of that information or for the content of any external website.

References have, wherever possible, been verified.

Mention of commercial names and products does not imply the endorsement of the United Nations.

References to dollars (\$) are to United States dollars, unless otherwise stated.

Symbols of United Nations documents are composed of capital letters combined with figures. Mention of such a symbol indicates a reference to a United Nations document.

United Nations publication issued by ESCWA, United Nations House, Riad El Solh Square,

P.O. Box: 11-8575, Beirut, Lebanon.

Website: www.unescwa.org.

o Acknowledgements

The Central Bureau of Statistics in collaboration with the Economic and Social Commission for Western Asia (ESCWA) completed the preparation and production of the "Sudan Gender Lens Pocketbook 2022".

o Introduction

The Sudan Gender Lens Pocketbook 2022 provides a statistical visual portrait of 18 states in the Sudan to monitor the progress of 40 selected indicators on key gender issues such as population, education, inequality, health and work.

The Pocketbook illustrates the situation of females compared to males with regard to equality between women and men in a user-friendly format. The national automated pocketbook is developed on excel sheets with graphic visualizations and linked to secondary sheets for data entry and presents progress over a two-year period.

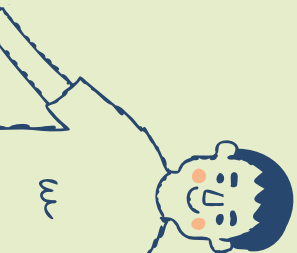
This National Gender Lens Pocketbook is designed to serve as a source of information on the issues of gender and women's empowerment at the subnational level to assist decision makers in formulating policies and programmes; and raise awareness on gender issues.





o Sudan's States

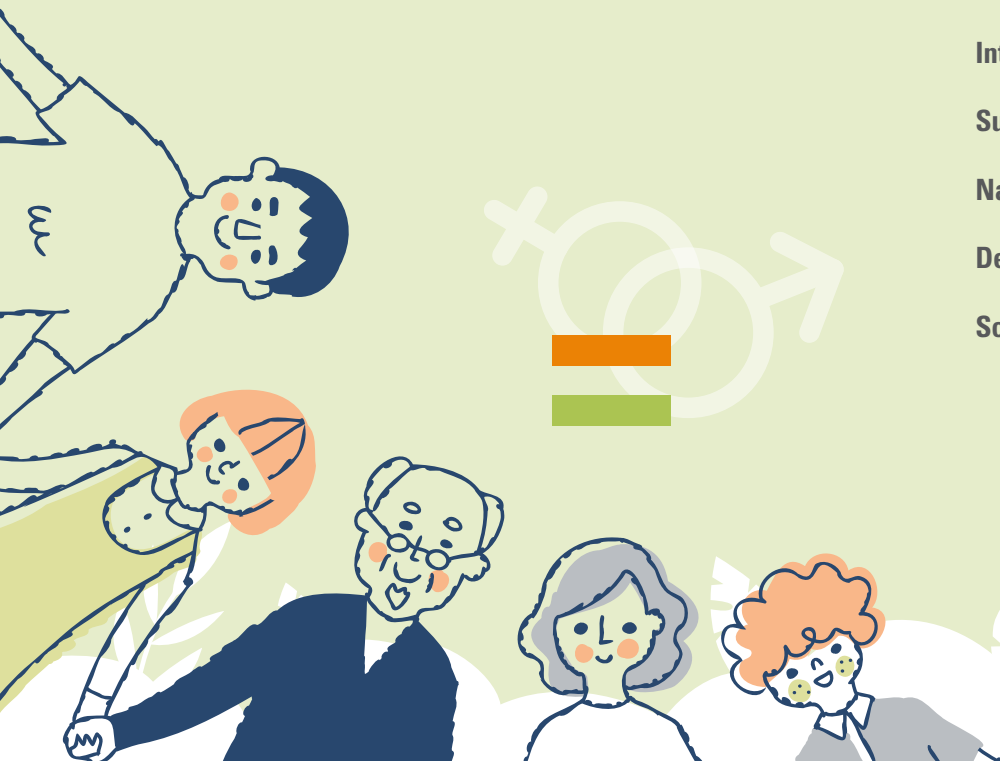
Northern	Blue Nile
River Nile	North Kordofan
Red Sea	South Kordofan
Kassala	West Kordofan
Gadarif	North Darfur
Khartoum	East Darfur
Gazira	Central Darfur
White Nile	West Darfur
Sinnar	South Darfur

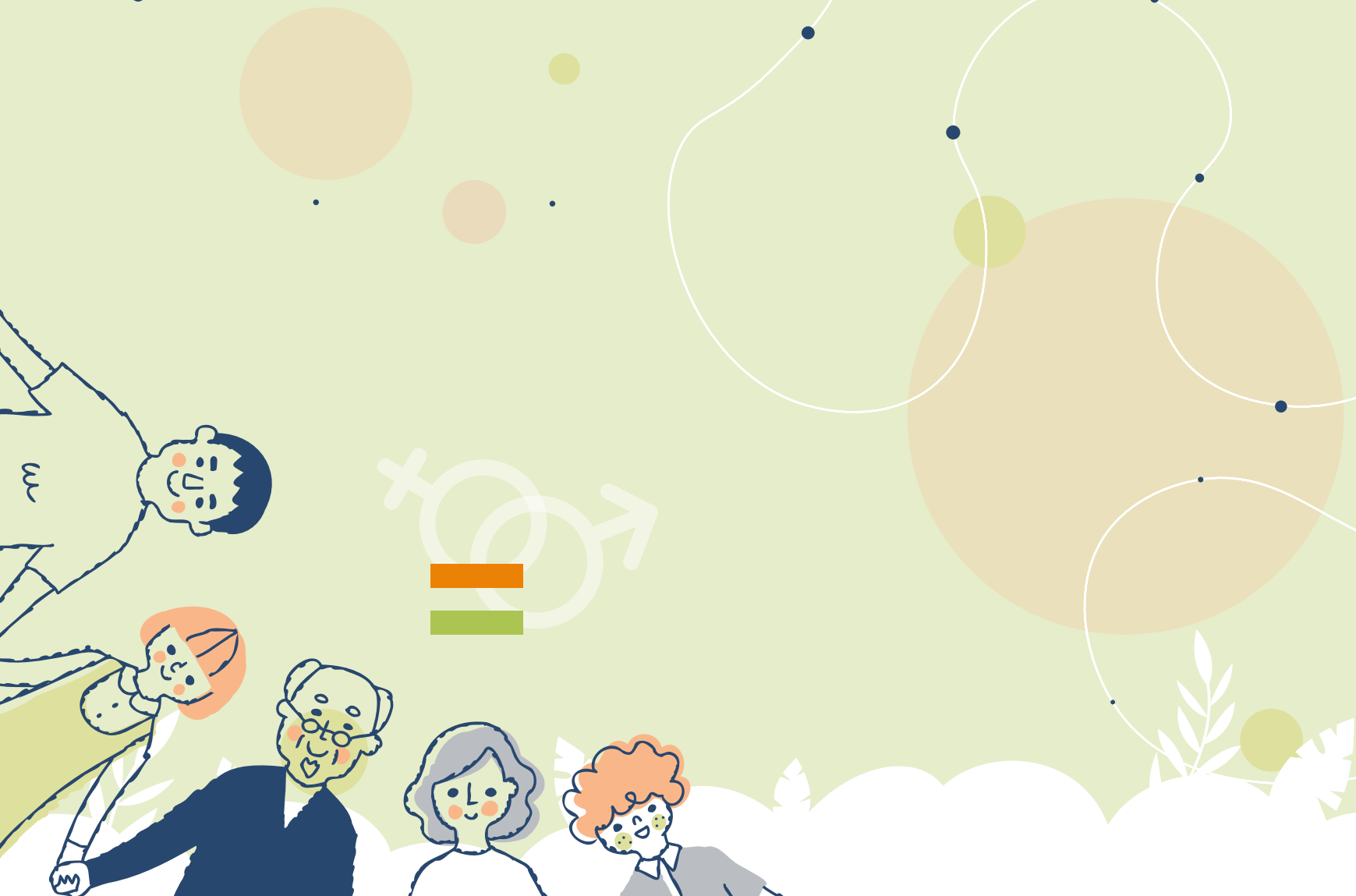




o Contents

Acknowledgements	1
Introduction	1
Sudan's States	3
National profile	7
Definitions	45
Sources	51



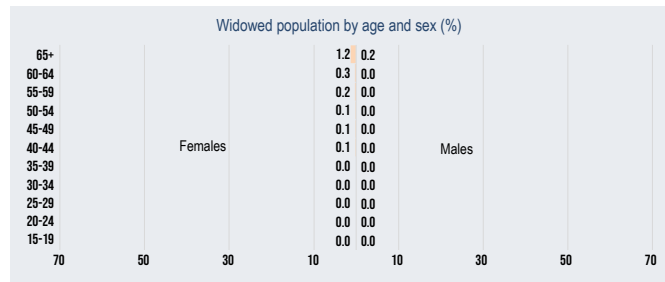




Sudan



	Latest
Total population (number)	41138904
Total population (%)	100
Sex ratio (males per 100 females)	103
Female early marriage before age 18 (%)	38



59



	Earliest		Latest	
	Women	Men	Women	Men
Population	61	58
Life expectancy at birth (years)	37	37
Population below 15 years (%)	39	39	59	60
Population aged 15-64 years (%)	57	58	3	3
Population aged 65+ (%)	4	3

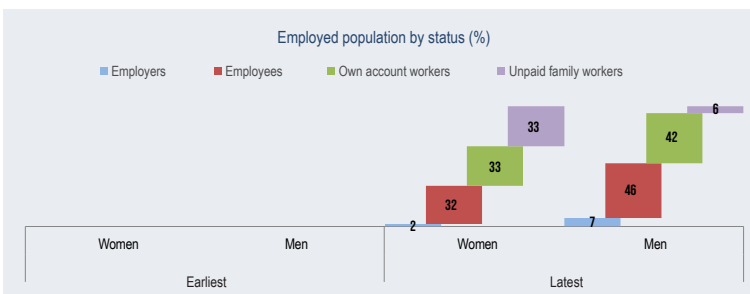
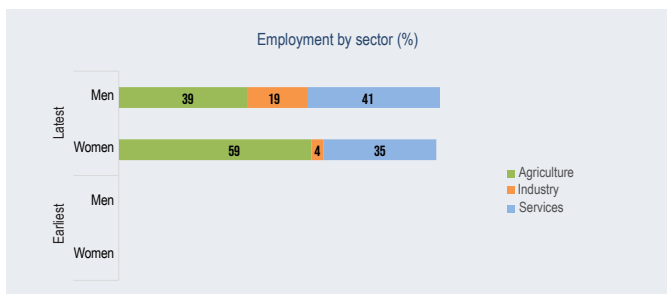
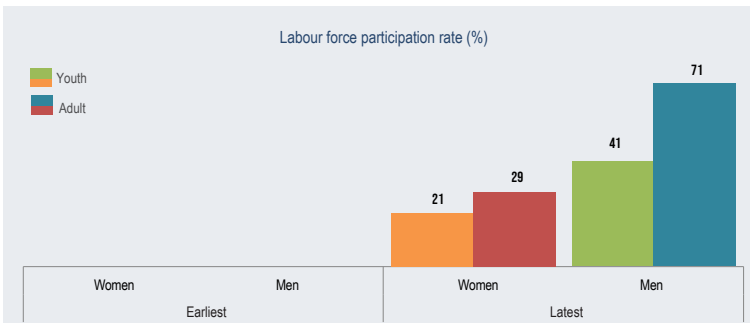
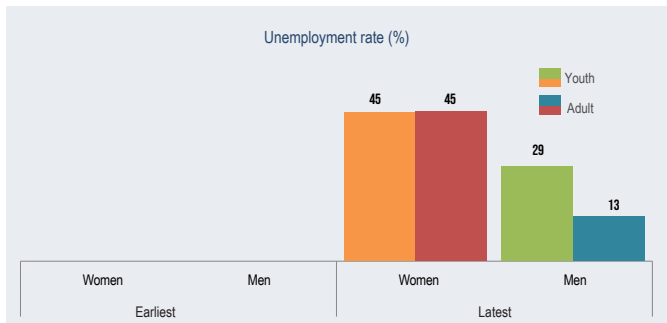
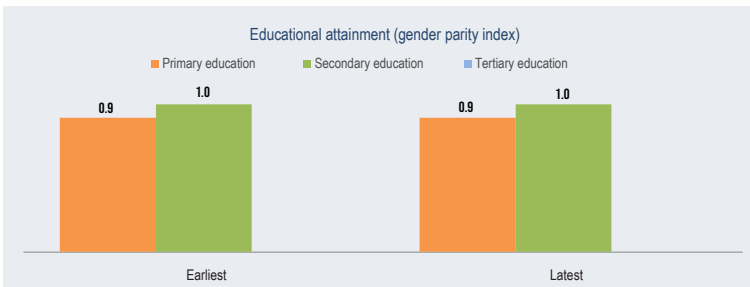
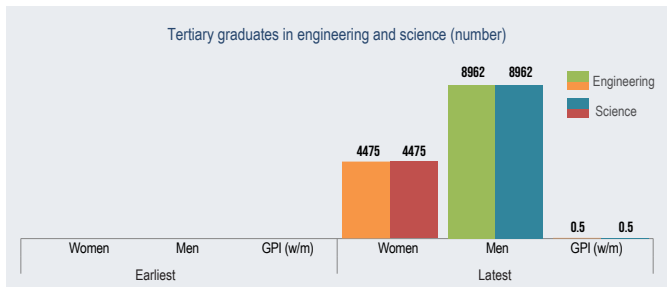
	Earliest	Latest
Dependency
Child dependency ratio	67	62
Old age dependency ratio	6	5
Total dependency ratio	73	67

	Earliest	Latest
Maternal health
Adolescent fertility rate	54	87
Total fertility rate	6	5
Maternal mortality ratio	...	435
Contraceptive use, any method (%)	9	12
Condom use (%)	0.0	0.0
Births attended by skilled health personnel (%)	73	78
Antenatal care coverage, At least one time (%)	75	79
Antenatal care coverage, At least four times (%)	47	51

	Earliest		Latest	
	Women	Men	Women	Men
Inequality
Youth not in education, employment or training (%)

	Earliest		Latest	
	Women	Men	Women	Men
Literacy	21	12
Youth illiteracy rate (%)	41	26
Adult illiteracy rate (%)

	Earliest		Latest	
	Women	Men	Women	Men
Work	11	29
Youth employment to population ratio (%)	20	61
Adult employment to population ratio (%)

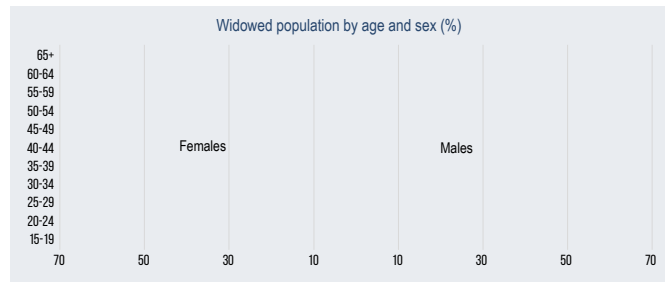




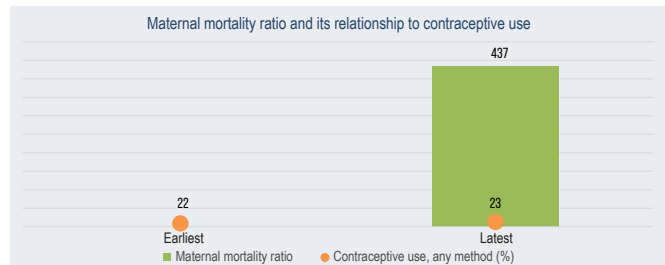
Northern



	Latest
Total population (number)	967005
Total population (%)	2
Sex ratio (males per 100 females)	101
Female early marriage before age 18 (%)	19



59



	Earliest		Latest	
	Women	Men	Women	Men
Population	64	63
Life expectancy at birth (years)	37	38
Population below 15 years (%)	36	36	58	57
Population aged 15-64 years (%)	59	58	4	5
Population aged 65+ (%)	4	5

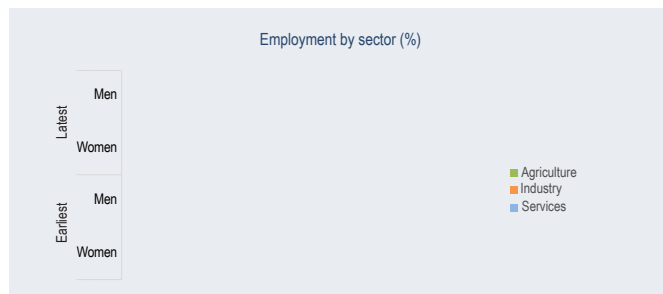
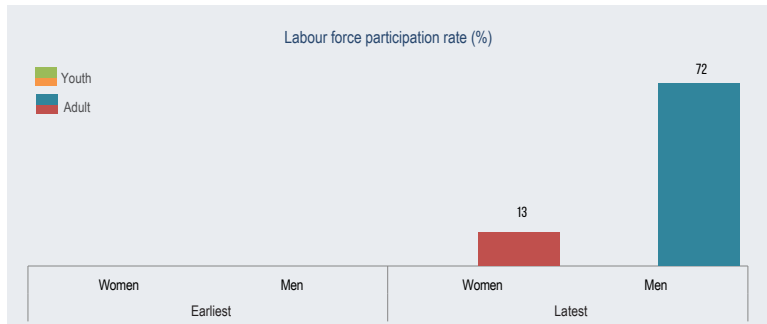
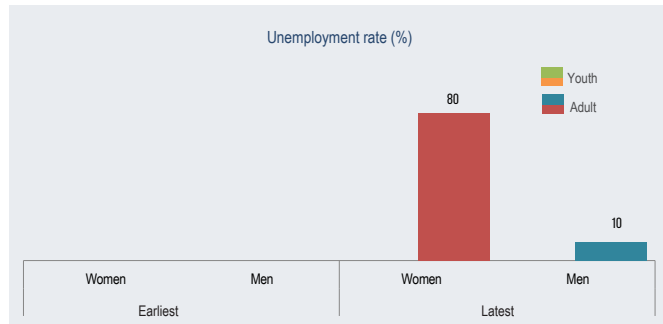
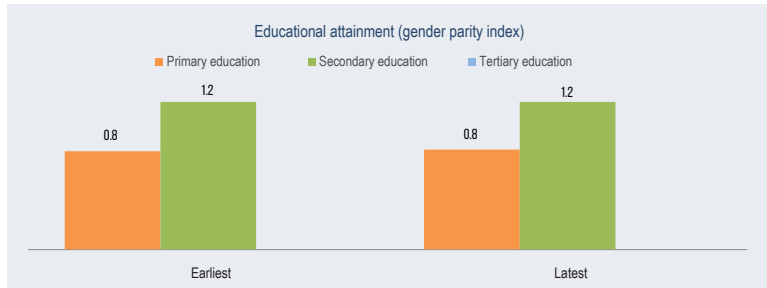
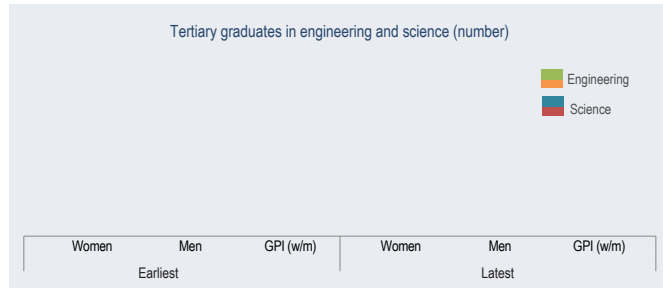
	Earliest	Latest
Dependency
Child dependency ratio	62	65
Old age dependency ratio	8	8
Total dependency ratio	70	73

	Earliest	Latest
Maternal health
Adolescent fertility rate	12	52
Total fertility rate	4	4
Maternal mortality ratio	...	437
Contraceptive use, any method (%)	22	23
Condom use (%)	0.0	0.0
Births attended by skilled health personnel (%)	97	99
Antenatal care coverage, At least one time (%)	89	95
Antenatal care coverage, At least four times (%)	51	67

	Earliest		Latest	
	Women	Men	Women	Men
Inequality
Youth not in education, employment or training (%)

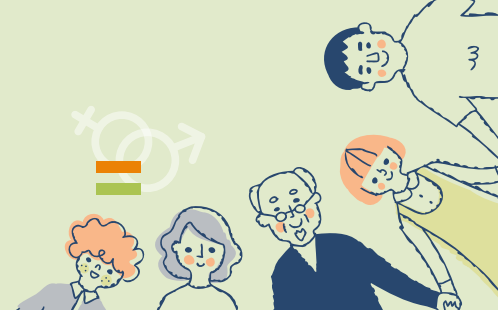
	Earliest		Latest	
	Women	Men	Women	Men
Literacy
Youth illiteracy rate (%)	28	16
Adult illiteracy rate (%)

	Earliest		Latest	
	Women	Men	Women	Men
Work
Youth employment to population ratio (%)	8	65
Adult employment to population ratio (%)

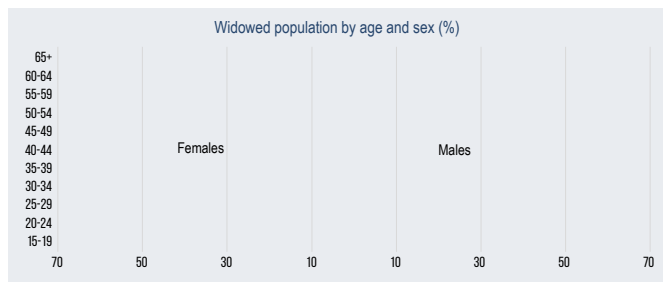




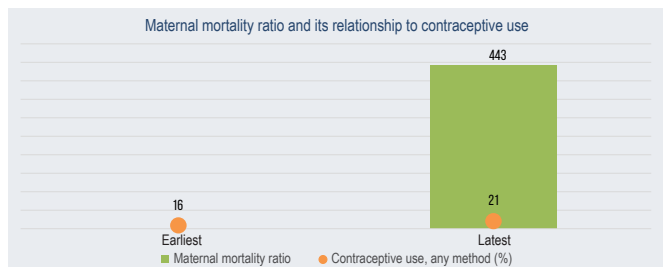
River Nile



	Latest
Total population (number)	1441140
Total population (%)	4
Sex ratio (males per 100 females)	103
Female early marriage before age 18 (%)	21



59



	Earliest		Latest	
	Women	Men	Women	Men
Population				
Life expectancy at birth (years)	--	--	61	61
Population below 15 years (%)	35	35	35	35
Population aged 15-64 years (%)	60	60	61	61
Population aged 65+ (%)	5	4	5	4

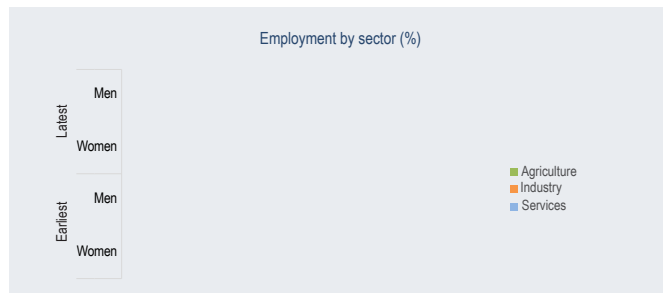
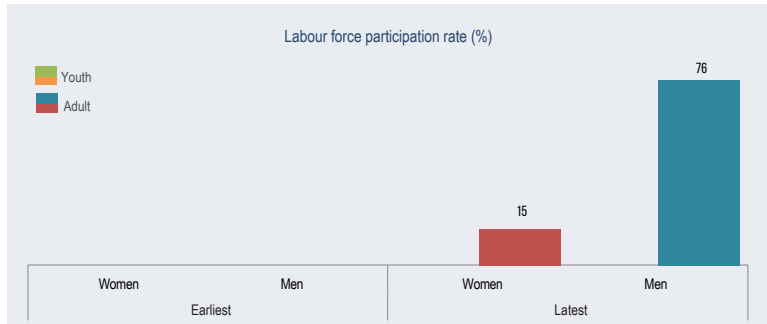
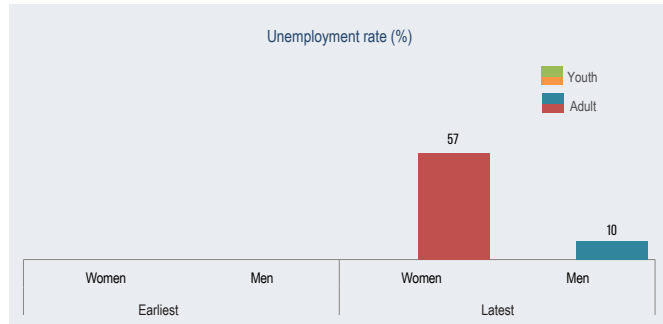
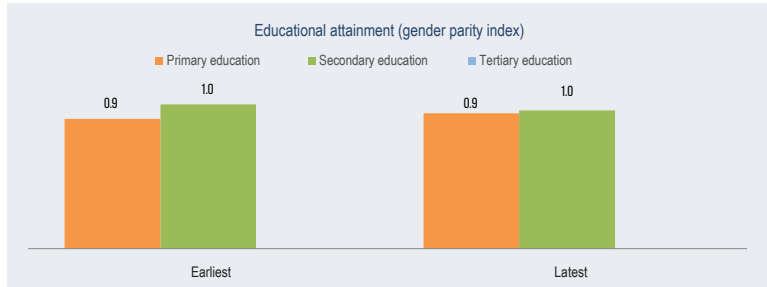
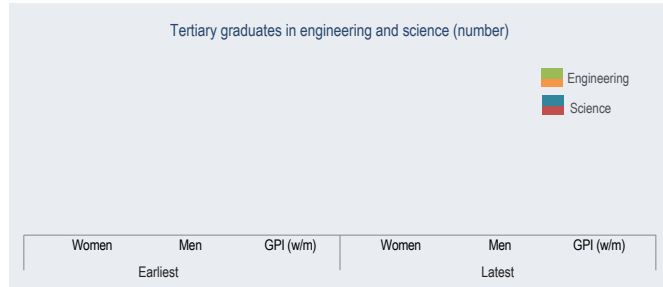
	Earliest	Latest
Dependency		
Child dependency ratio	59	58
Old age dependency ratio	8	7
Total dependency ratio	67	65

	Earliest	Latest
Maternal health		
Adolescent fertility rate	16	49
Total fertility rate	4	4
Maternal mortality ratio	--	443
Contraceptive use, any method (%)	16	21
Condom use (%)	0.0	0.0
Births attended by skilled health personnel (%)	91	97
Antenatal care coverage, At least one time (%)	77	95
Antenatal care coverage, At least four times (%)	52	53

	Earliest		Latest	
	Women	Men	Women	Men
Inequality				
Youth not in education, employment or training (%)	--	--	--	--

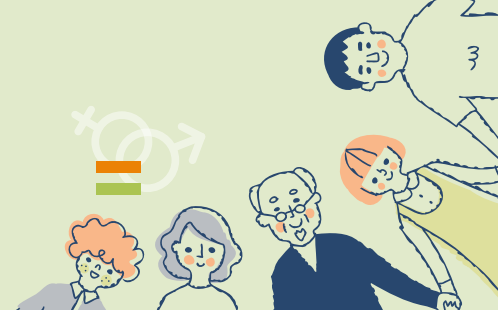
	Earliest		Latest	
	Women	Men	Women	Men
Literacy				
Youth illiteracy rate (%)	--	--	--	--
Adult illiteracy rate (%)	--	--	28	18

	Earliest		Latest	
	Women	Men	Women	Men
Work				
Youth employment to population ratio (%)	--	--	--	--
Adult employment to population ratio (%)	--	--	7	69

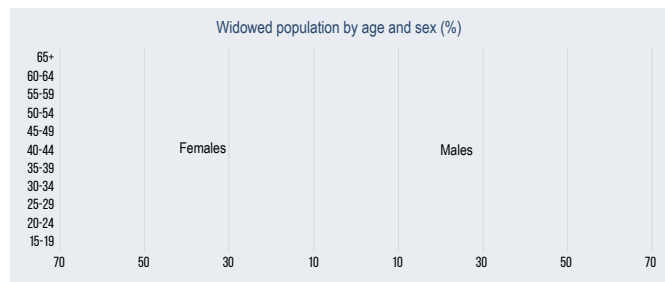




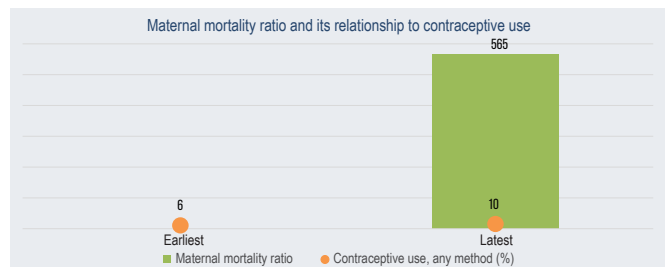
Red Sea



	Latest
Total population (number)	1825180
Total population (%)	4
Sex ratio (males per 100 females)	129
Female early marriage before age 18 (%)	32



59



	Earliest		Latest	
	Women	Men	Women	Men
Population	59	59
Life expectancy at birth (years)	33	35
Population below 15 years (%)	34	36	64	62
Population aged 15-64 years (%)	63	62	4	3
Population aged 65+ (%)	3	2		

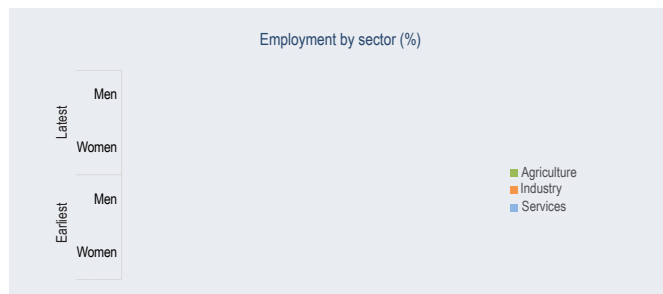
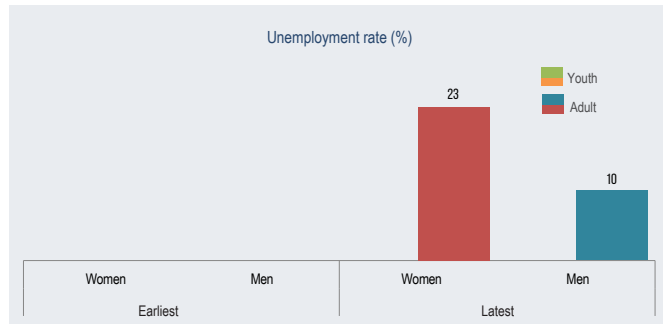
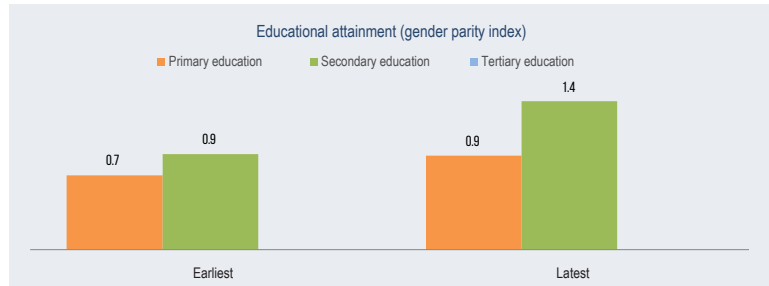
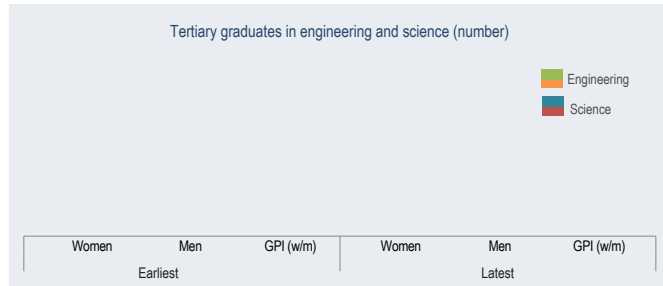
	Earliest	Latest
Dependency		
Child dependency ratio	56	53
Old age dependency ratio	4	5
Total dependency ratio	60	58

	Earliest	Latest
Maternal health		
Adolescent fertility rate	27	49
Total fertility rate	5	3
Maternal mortality ratio	...	565
Contraceptive use, any method (%)	6	10
Condom use (%)	0.0	0.1
Births attended by skilled health personnel (%)	72	78
Antenatal care coverage, At least one time (%)	65	72
Antenatal care coverage, At least four times (%)	35	53

	Earliest		Latest	
	Women	Men	Women	Men
Inequality
Youth not in education, employment or training (%)

	Earliest		Latest	
	Women	Men	Women	Men
Literacy				
Youth illiteracy rate (%)	47	35
Adult illiteracy rate (%)		

	Earliest		Latest	
	Women	Men	Women	Men
Work				
Youth employment to population ratio (%)	8	64
Adult employment to population ratio (%)		

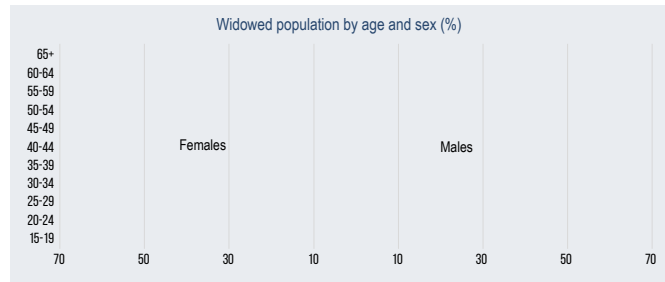




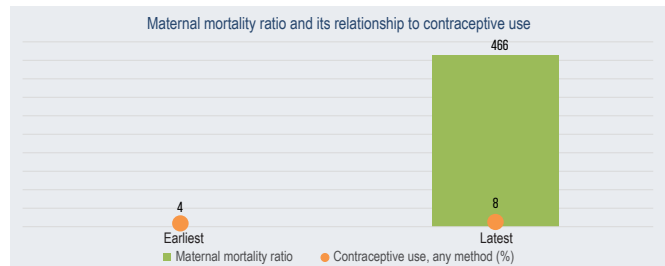
Kassala



	Latest
Total population (number)	2164514
Total population (%)	6
Sex ratio (males per 100 females)	120
Female early marriage before age 18 (%)	45



59



	Earliest		Latest	
	Women	Men	Women	Men
Population	59	58
Life expectancy at birth (years)	29	30
Population below 15 years (%)	31	33	67	66
Population aged 15-64 years (%)	65	64	4	3
Population aged 65+ (%)	4	3		

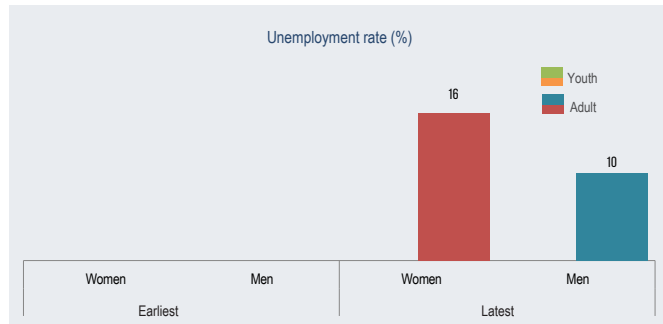
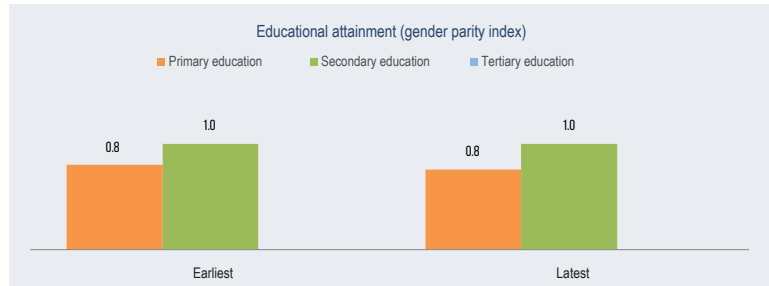
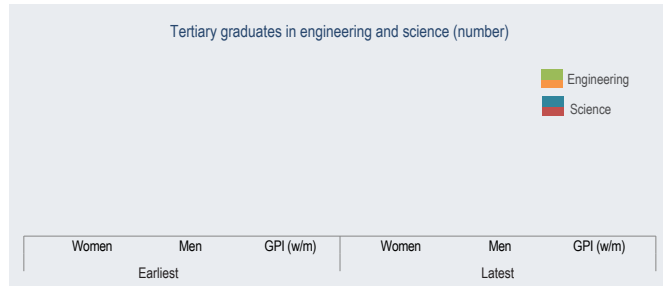
	Earliest	Latest
Dependency		
Child dependency ratio	50	44
Old age dependency ratio	6	6
Total dependency ratio	56	50

	Earliest	Latest
Maternal health		
Adolescent fertility rate	110	113
Total fertility rate	10	5
Maternal mortality ratio	-	466
Contraceptive use, any method (%)	4	8
Condom use (%)	0.0	0.0
Births attended by skilled health personnel (%)	70	77
Antenatal care coverage, At least one time (%)	74	83
Antenatal care coverage, At least four times (%)	38	54

	Earliest		Latest	
	Women	Men	Women	Men
Inequality
Youth not in education, employment or training (%)	-	-	-	-

	Earliest		Latest	
	Women	Men	Women	Men
Literacy				
Youth illiteracy rate (%)	62	44
Adult illiteracy rate (%)		

	Earliest		Latest	
	Women	Men	Women	Men
Work				
Youth employment to population ratio (%)	6	68
Adult employment to population ratio (%)		

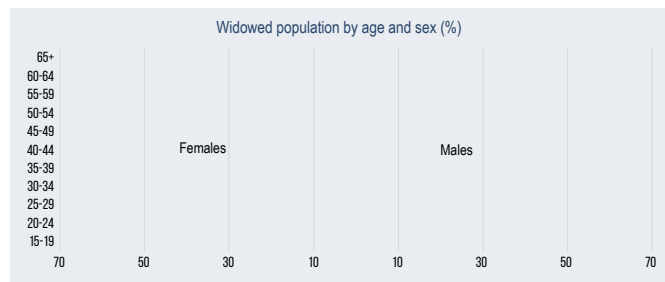




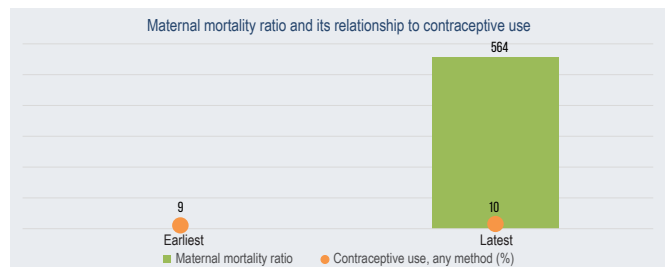
Gadarif



	Latest
Total population (number)	1837506
Total population (%)	4
Sex ratio (males per 100 females)	98
Female early marriage before age 18 (%)	49



59



	Earliest		Latest	
	Women	Men	Women	Men
Population
Life expectancy at birth (years)
Population below 15 years (%)	43	42	40	38
Population aged 15-64 years (%)	53	56	57	59
Population aged 65+ (%)	4	3	4	3

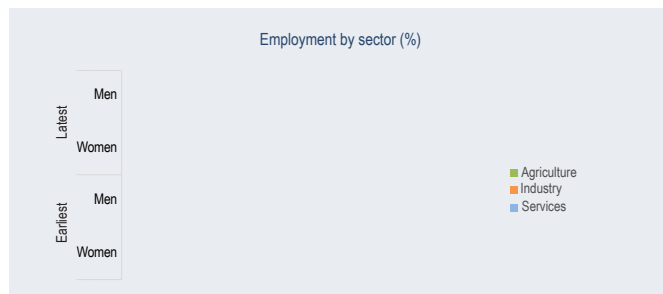
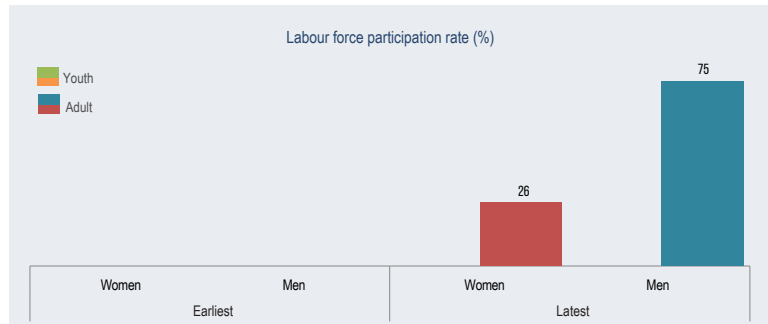
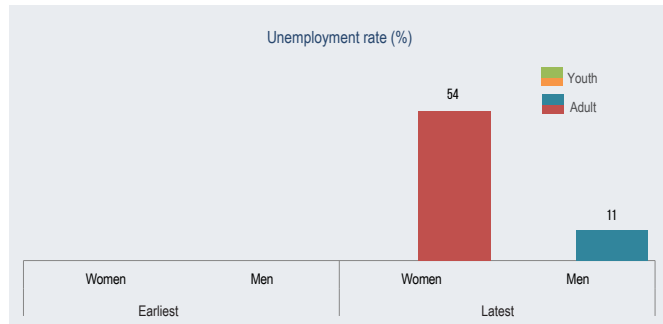
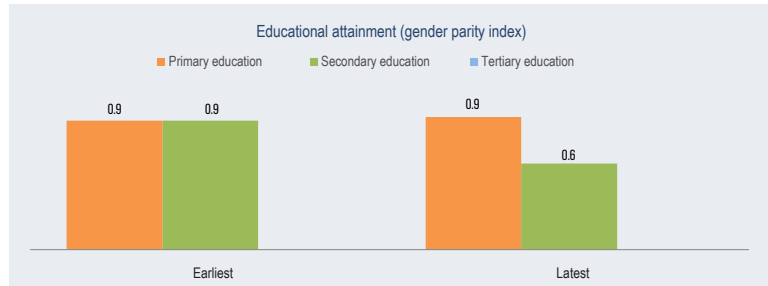
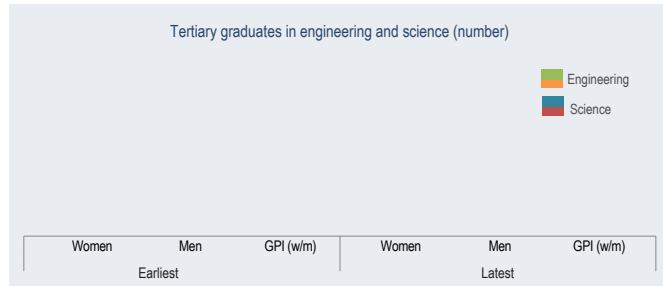
	Earliest	Latest
Dependency		
Child dependency ratio	78	68
Old age dependency ratio	6	5
Total dependency ratio	84	73

	Earliest	Latest
Maternal health		
Adolescent fertility rate	20	115
Total fertility rate	5	6
Maternal mortality ratio	...	564
Contraceptive use, any method (%)	9	10
Condom use (%)	0.0	0.0
Births attended by skilled health personnel (%)	64	83
Antenatal care coverage, At least one time (%)	71	81
Antenatal care coverage, At least four times (%)	39	45

	Earliest		Latest	
	Women	Men	Women	Men
Inequality
Youth not in education, employment or training (%)

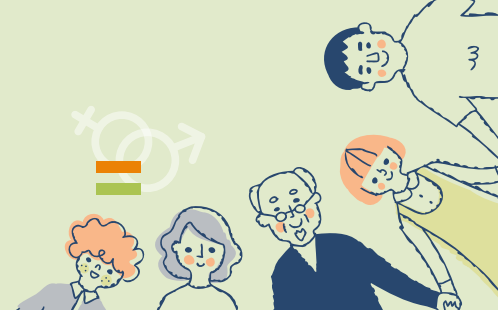
	Earliest		Latest	
	Women	Men	Women	Men
Literacy				
Youth illiteracy rate (%)
Adult illiteracy rate (%)	53	36

	Earliest		Latest	
	Women	Men	Women	Men
Work				
Youth employment to population ratio (%)
Adult employment to population ratio (%)	17	67

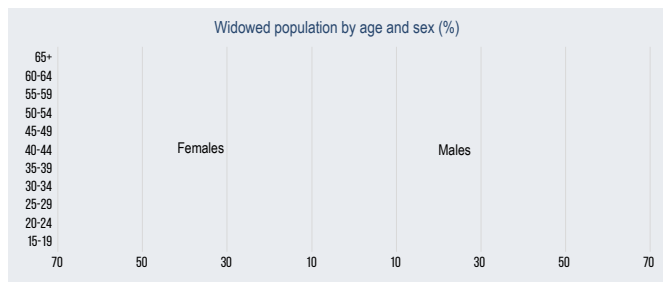




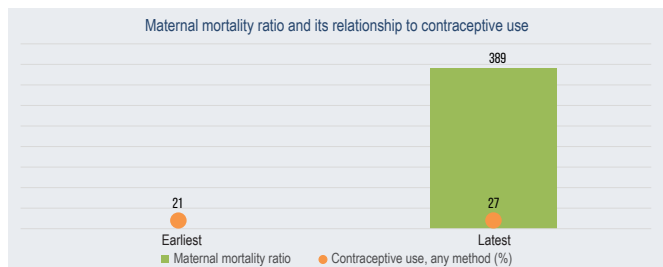
Khartoum



	Latest
Total population (number)	7286523
Total population (%)	18
Sex ratio (males per 100 females)	111
Female early marriage before age 18 (%)	27



59



	Earliest		Latest	
	Women	Men	Women	Men
Population
Life expectancy at birth (years)
Population below 15 years (%)	36	37	38	38
Population aged 15-64 years (%)	61	60	59	59
Population aged 65+ (%)	3	3	3	3

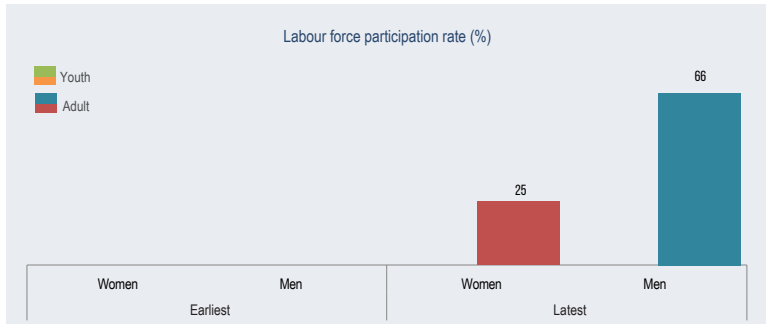
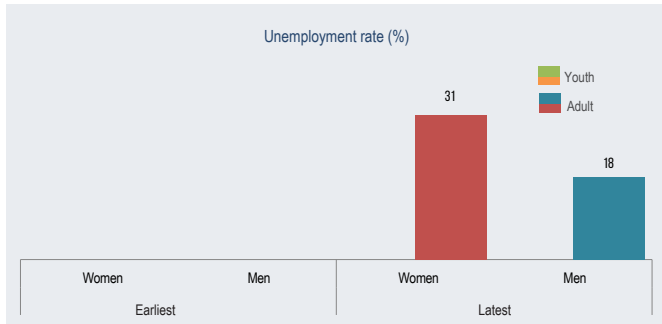
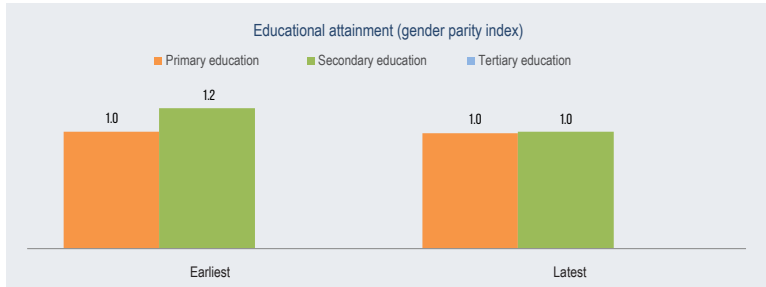
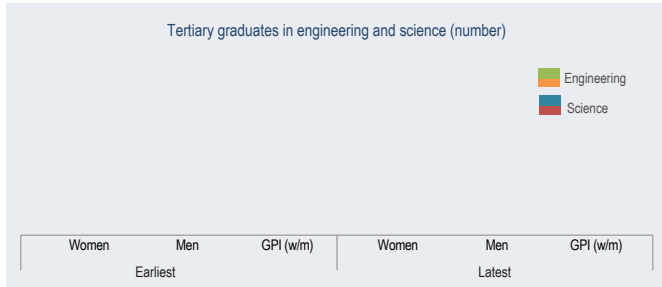
	Earliest	Latest
Dependency		
Child dependency ratio	60	64
Old age dependency ratio	5	5
Total dependency ratio	66	69

	Earliest	Latest
Maternal health		
Adolescent fertility rate	47	47
Total fertility rate	5	4
Maternal mortality ratio	...	389
Contraceptive use, any method (%)	21	27
Condom use (%)	0.0	0.0
Births attended by skilled health personnel (%)	93	100
Antenatal care coverage, At least one time (%)	89	97
Antenatal care coverage, At least four times (%)	78	82

	Earliest		Latest	
	Women	Men	Women	Men
Inequality
Youth not in education, employment or training (%)

	Earliest		Latest	
	Women	Men	Women	Men
Literacy				
Youth illiteracy rate (%)
Adult illiteracy rate (%)	20	11

	Earliest		Latest	
	Women	Men	Women	Men
Work				
Youth employment to population ratio (%)
Adult employment to population ratio (%)	11	55

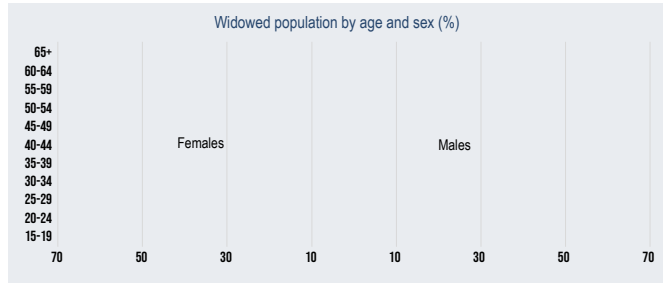




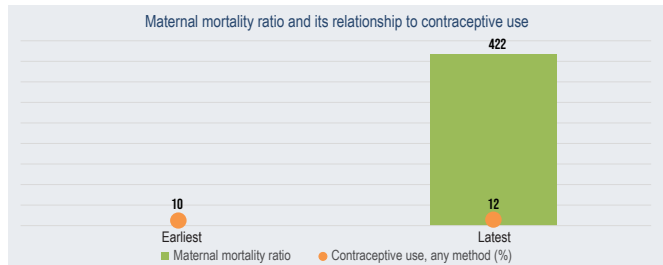
Gazira



Total population (number)	Latest	4798392
Total population (%)	12	
Sex ratio (males per 100 females)	95	
Female early marriage before age 18 (%)	30	



59



	Earliest		Latest	
	Women	Men	Women	Men
Population
Life expectancy at birth (years)
Population below 15 years (%)	39	36	38	35
Population aged 15-64 years (%)	56	60	58	61
Population aged 65+ (%)	4	4	4	4

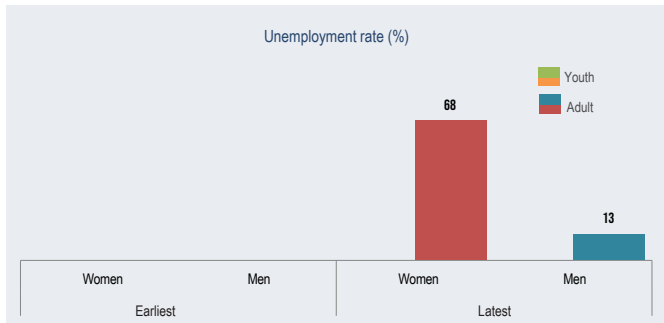
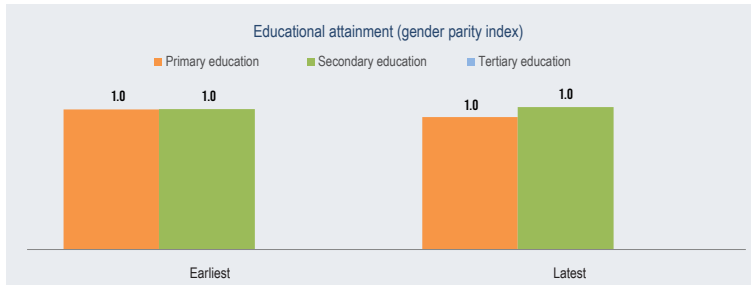
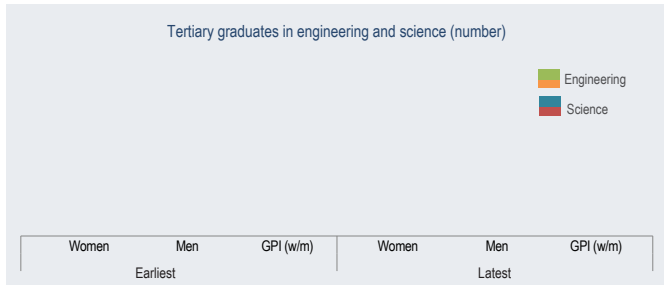
	Earliest	Latest
Dependency		
Child dependency ratio	65	61
Old age dependency ratio	7	7
Total dependency ratio	72	68

	Earliest	Latest
Maternal health		
Adolescent fertility rate	24	65
Total fertility rate	4	4
Maternal mortality ratio	...	422
Contraceptive use, any method (%)	10	12
Condom use (%)	0.0	0.1
Births attended by skilled health personnel (%)	89	93
Antenatal care coverage, At least one time (%)	78	83
Antenatal care coverage, At least four times (%)	44	51

	Earliest		Latest	
	Women	Men	Women	Men
Inequality
Youth not in education, employment or training (%)

	Earliest		Latest	
	Women	Men	Women	Men
Literacy				
Youth illiteracy rate (%)
Adult illiteracy rate (%)	32	19

	Earliest		Latest	
	Women	Men	Women	Men
Work				
Youth employment to population ratio (%)
Adult employment to population ratio (%)	14	61

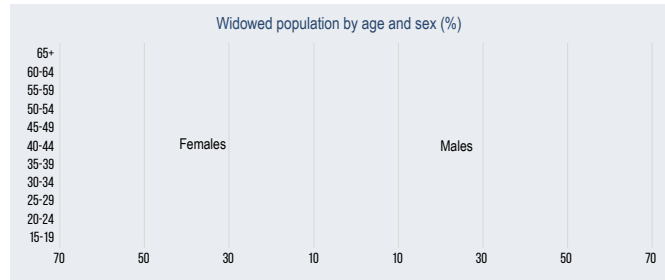




White Nile



	Latest
Total population (number)	2297076
Total population (%)	6
Sex ratio (males per 100 females)	95
Female early marriage before age 18 (%)	37



59



	Earliest		Latest	
	Women	Men	Women	Men
Population
Life expectancy at birth (years)
Population below 15 years (%)	40	38	37	36
Population aged 15-64 years (%)	56	59	59	61
Population aged 65+ (%)	4	3	4	3

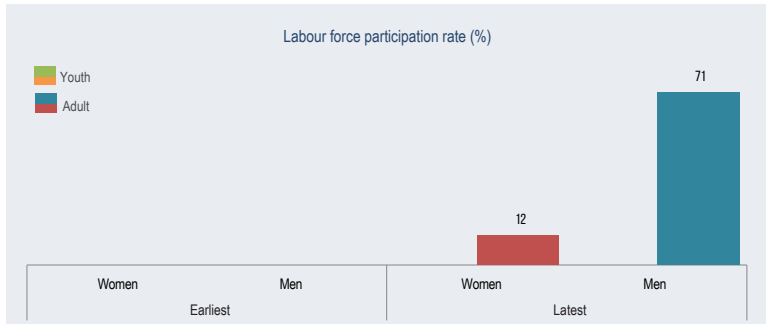
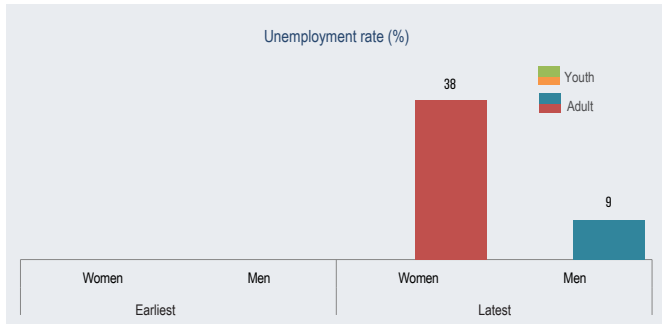
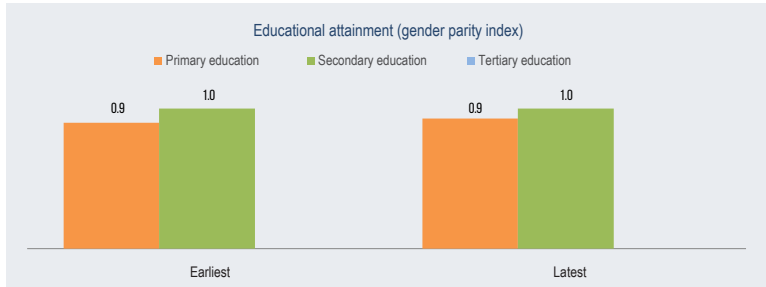
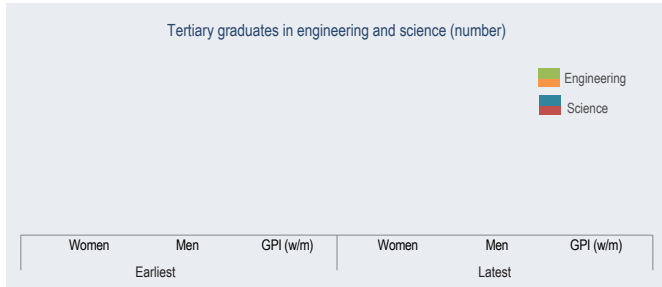
	Earliest	Latest
Dependency		
Child dependency ratio	68	61
Old age dependency ratio	6	6
Total dependency ratio	75	67

	Earliest	Latest
Maternal health		
Adolescent fertility rate	62	91
Total fertility rate	6	5
Maternal mortality ratio	...	503
Contraceptive use, any method (%)	13	16
Condom use (%)	0.0	0.0
Births attended by skilled health personnel (%)	86	92
Antenatal care coverage, At least one time (%)	79	79
Antenatal care coverage, At least four times (%)	42	46

	Earliest		Latest	
	Women	Men	Women	Men
Inequality
Youth not in education, employment or training (%)

	Earliest		Latest	
	Women	Men	Women	Men
Literacy				
Youth illiteracy rate (%)
Adult illiteracy rate (%)	46	32

	Earliest		Latest	
	Women	Men	Women	Men
Work				
Youth employment to population ratio (%)
Adult employment to population ratio (%)	8	65

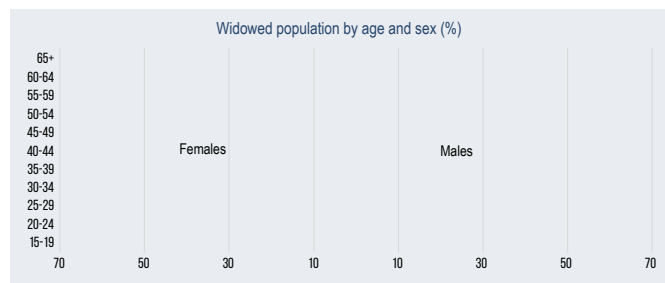




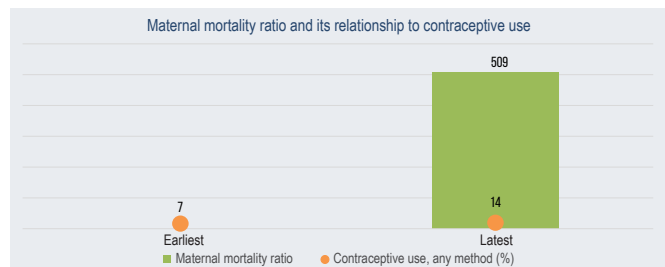
Sinnar



	Latest
Total population (number)	1718259
Total population (%)	4
Sex ratio (males per 100 females)	94
Female early marriage before age 18 (%)	34



59



	Earliest		Latest	
	Women	Men	Women	Men
Population
Life expectancy at birth (years)
Population below 15 years (%)	41	39	38	36
Population aged 15-64 years (%)	55	58	58	60
Population aged 65+ (%)	4	3	4	3

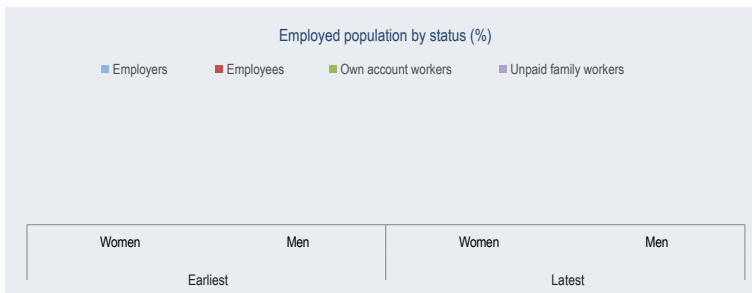
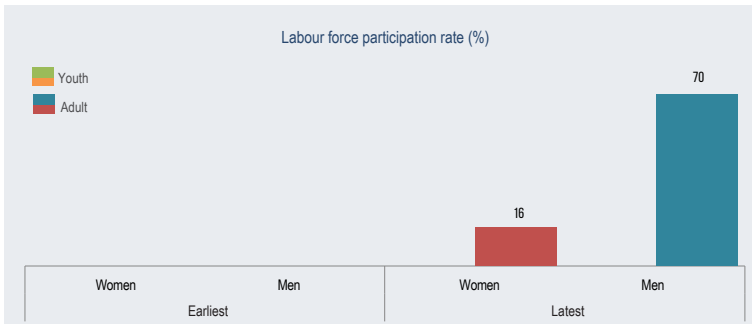
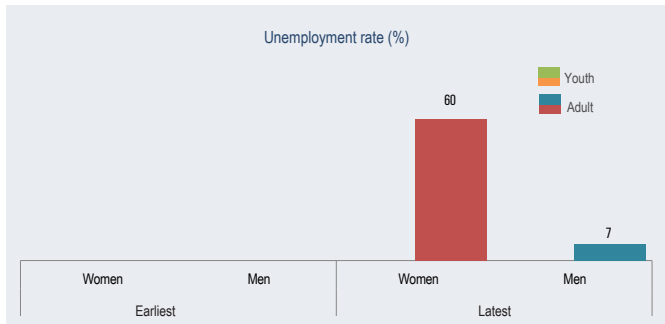
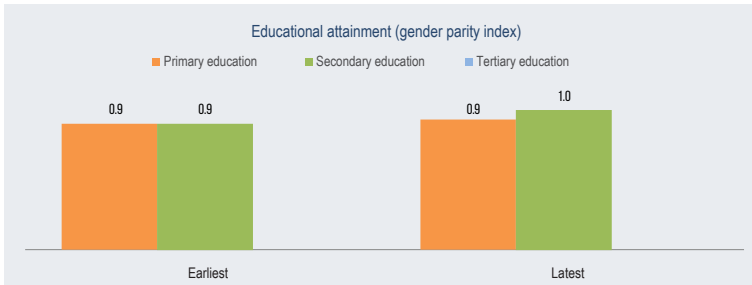
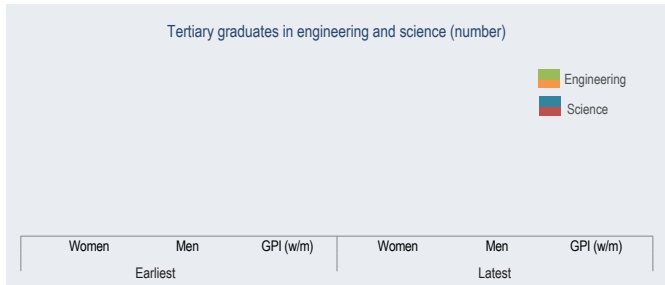
	Earliest	Latest
Dependency
Child dependency ratio	70	63
Old age dependency ratio	6	6
Total dependency ratio	76	69

	Earliest	Latest
Maternal health
Adolescent fertility rate	36	86
Total fertility rate	6	5
Maternal mortality ratio	...	609
Contraceptive use, any method (%)	7	14
Condom use (%)	0.0	0.0
Births attended by skilled health personnel (%)	83	89
Antenatal care coverage, At least one time (%)	71	75
Antenatal care coverage, At least four times (%)	36	44

	Earliest		Latest	
	Women	Men	Women	Men
Inequality
Youth not in education, employment or training (%)

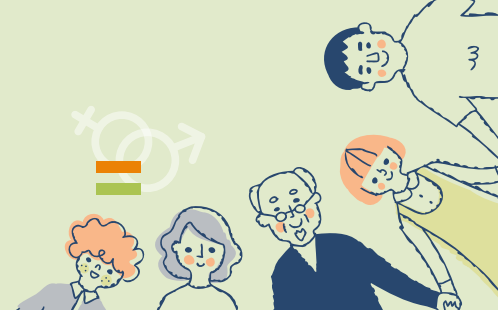
	Earliest		Latest	
	Women	Men	Women	Men
Literacy
Youth illiteracy rate (%)
Adult illiteracy rate (%)	45	29

	Earliest		Latest	
	Women	Men	Women	Men
Work
Youth employment to population ratio (%)
Adult employment to population ratio (%)	10	65

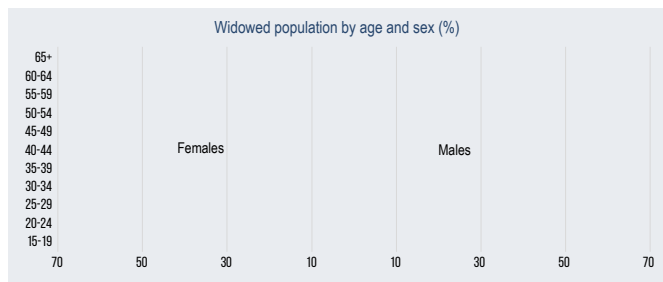




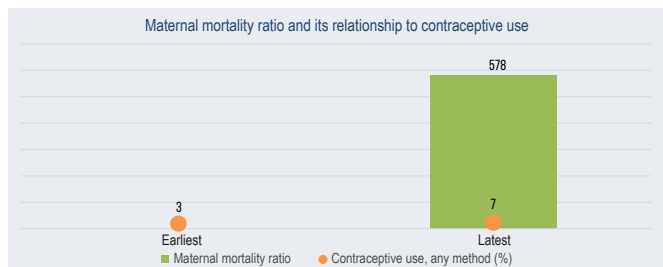
Blue Nile



	Latest
Total population (number)	1161258
Total population (%)	3
Sex ratio (males per 100 females)	101
Female early marriage before age 18 (%)	50



59



	Earliest		Latest	
	Women	Men	Women	Men
Population	58	57
Life expectancy at birth (years)	45	45	41	41
Population below 15 years (%)	52	53	56	57
Population aged 15-64 years (%)	3	2	3	2

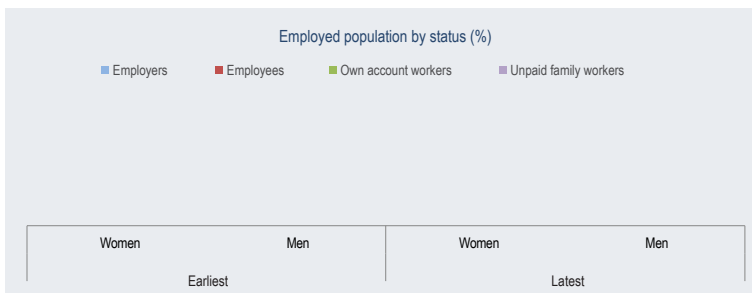
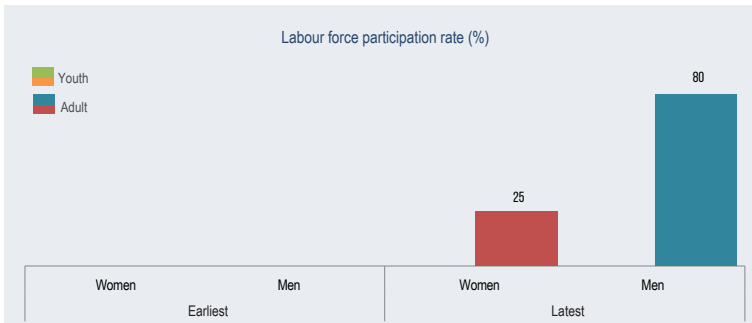
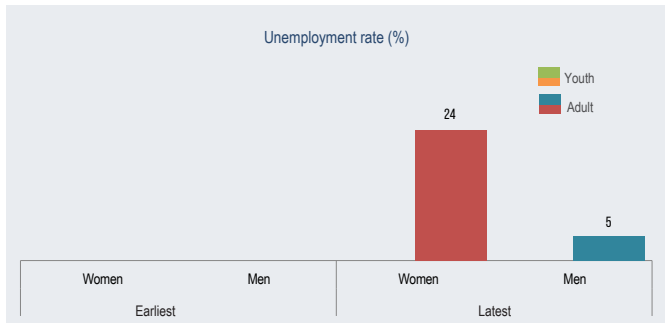
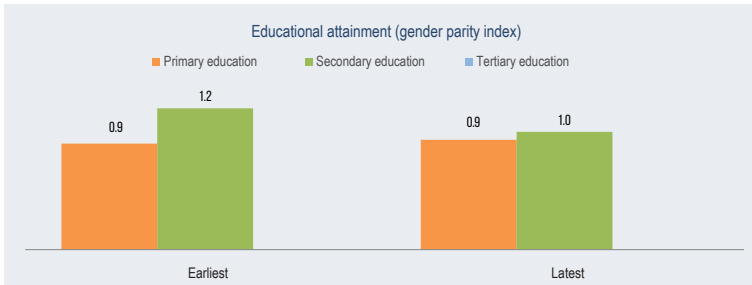
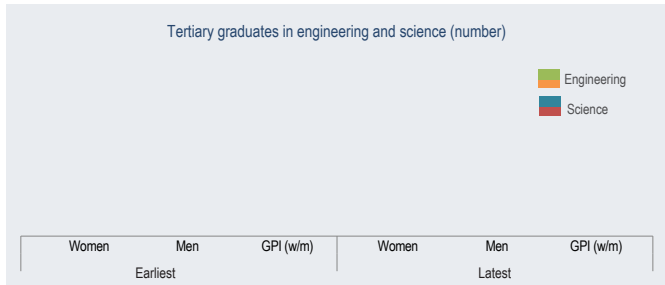
	Earliest	Latest
Dependency	85	73
Child dependency ratio	5	5
Old age dependency ratio	90	78

	Earliest	Latest
Maternal health	92	114
Adolescent fertility rate	7	7
Total fertility rate	...	578
Maternal mortality ratio	3	7
Contraceptive use, any method (%)	0.0	0.0
Condom use (%)	45	61
Births attended by skilled health personnel (%)	59	72
Antenatal care coverage, At least one time (%)	32	43
Antenatal care coverage, At least four times (%)

	Earliest		Latest	
	Women	Men	Women	Men
Inequality
Youth not in education, employment or training (%)

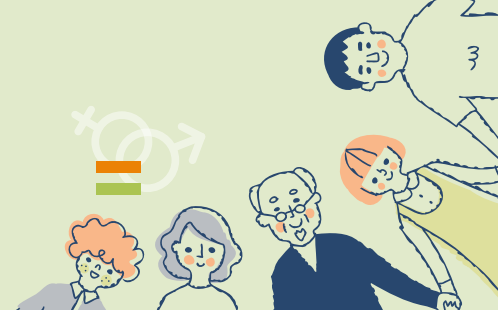
	Earliest		Latest	
	Women	Men	Women	Men
Literacy	46	31
Youth illiteracy rate (%)
Adult illiteracy rate (%)

	Earliest		Latest	
	Women	Men	Women	Men
Work	22	76
Youth employment to population ratio (%)
Adult employment to population ratio (%)

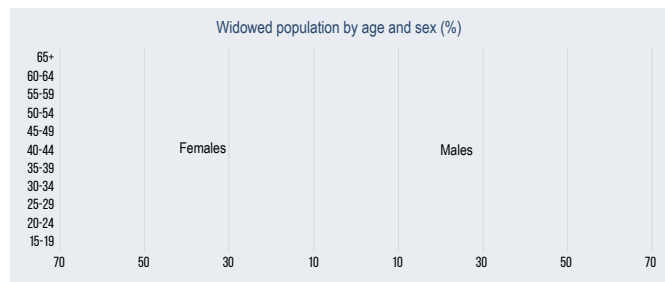




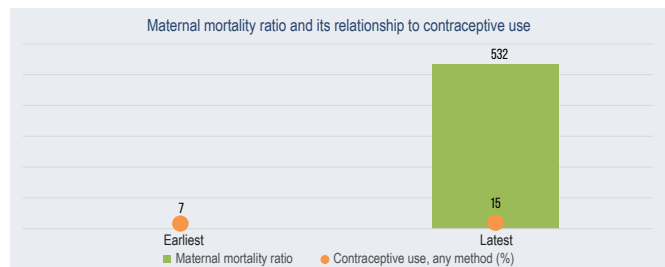
North Kordofan



	Latest
Total population (number)	2760441
Total population (%)	7
Sex ratio (males per 100 females)	93
Female early marriage before age 18 (%)	39



59



	Earliest		Latest	
	Women	Men	Women	Men
Population	60	59
Life expectancy at birth (years)	41	39
Population below 15 years (%)	44	41	41	39
Population aged 15-64 years (%)	52	56	56	58
Population aged 65+ (%)	4	3	3	3

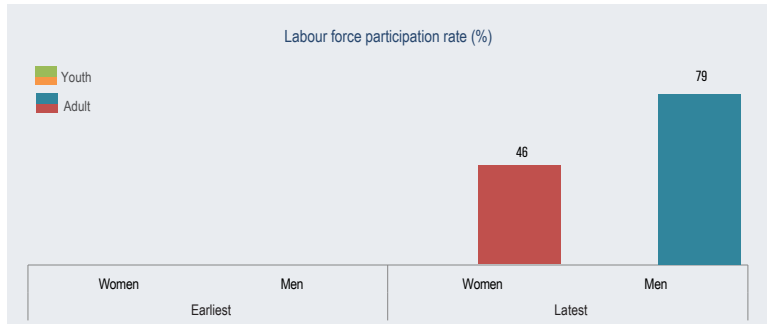
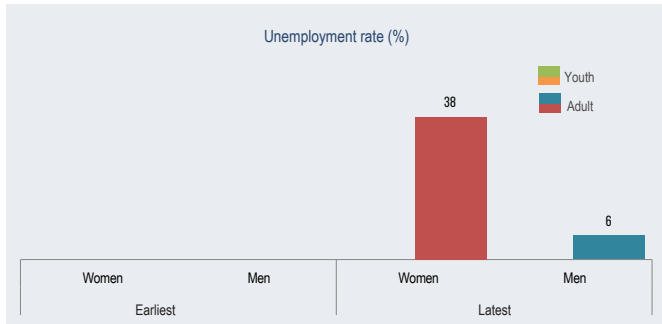
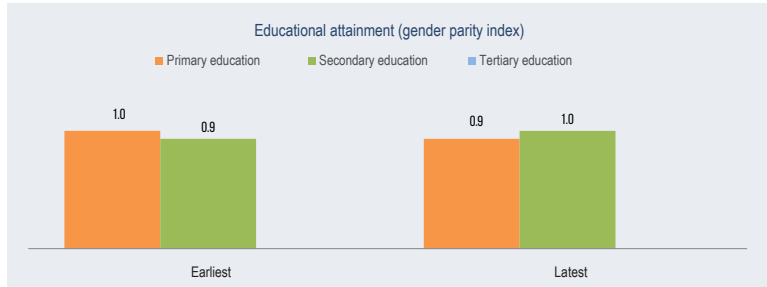
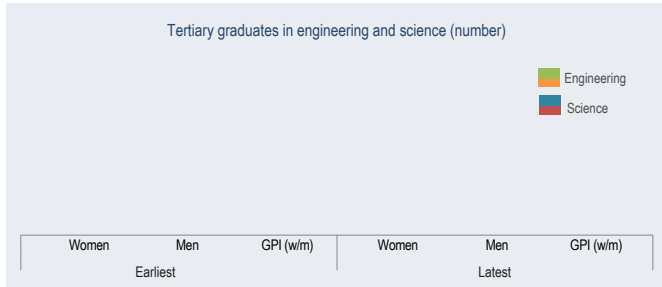
	Earliest	Latest
Dependency		
Child dependency ratio	79	70
Old age dependency ratio	7	6
Total dependency ratio	86	76

	Earliest	Latest
Maternal health		
Adolescent fertility rate	35	113
Total fertility rate	6	5
Maternal mortality ratio	-	532
Contraceptive use, any method (%)	7	15
Condom use (%)	0.0	0.0
Births attended by skilled health personnel (%)	80	87
Antenatal care coverage, At least one time (%)	84	86
Antenatal care coverage, At least four times (%)	53	58

	Earliest		Latest	
	Women	Men	Women	Men
Inequality
Youth not in education, employment or training (%)	-	-	-	-

	Earliest		Latest	
	Women	Men	Women	Men
Literacy				
Youth illiteracy rate (%)
Adult illiteracy rate (%)	49	33

	Earliest		Latest	
	Women	Men	Women	Men
Work				
Youth employment to population ratio (%)
Adult employment to population ratio (%)	41	74

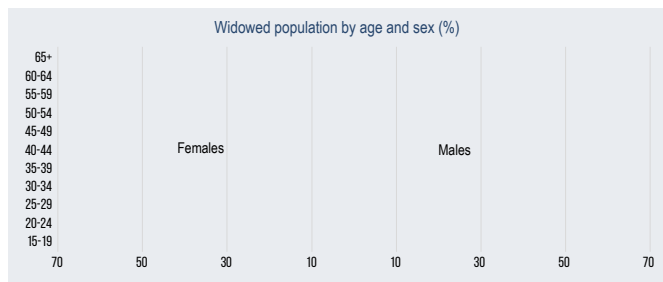




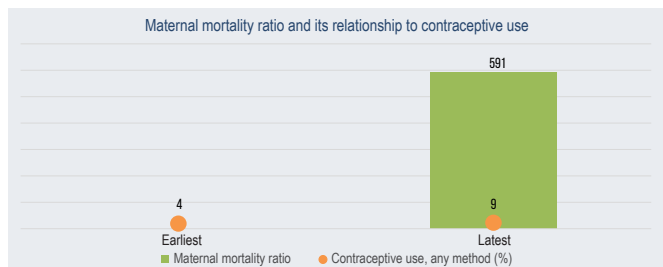
South Kordofan



	Latest
Total population (number)	193095
Total population (%)	3
Sex ratio (males per 100 females)	95
Female early marriage before age 18 (%)	47



59



	Earliest		Latest	
	Women	Men	Women	Men
Population	59	57
Life expectancy at birth (years)	46	44	42	40
Population below 15 years (%)	51	53	55	57
Population aged 15-64 years (%)	3	3	3	3
Population aged 65+ (%)

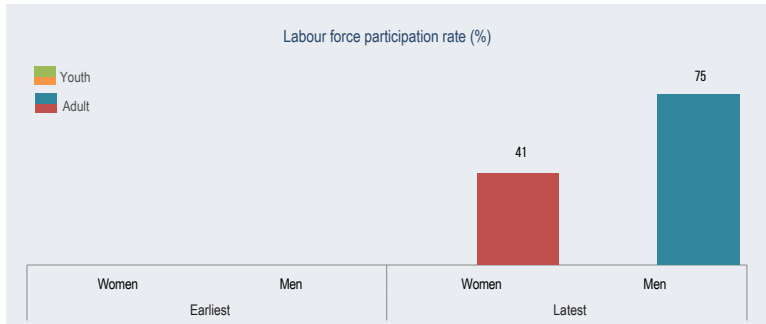
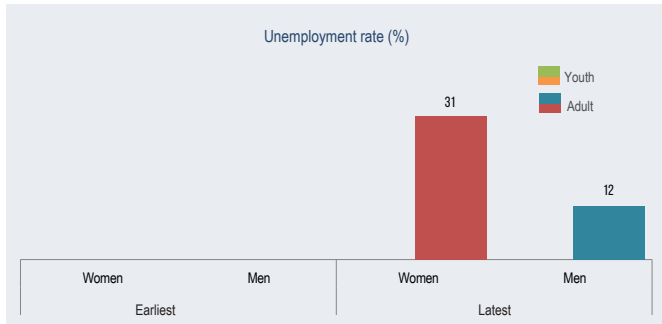
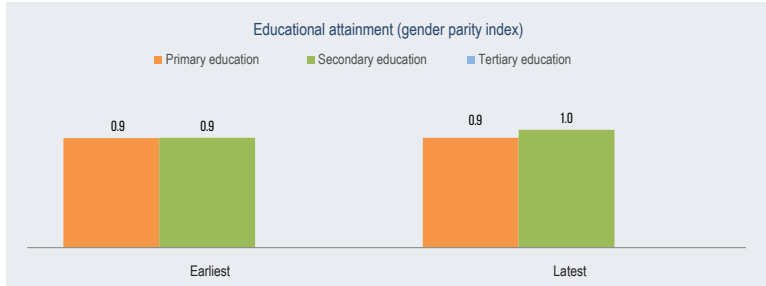
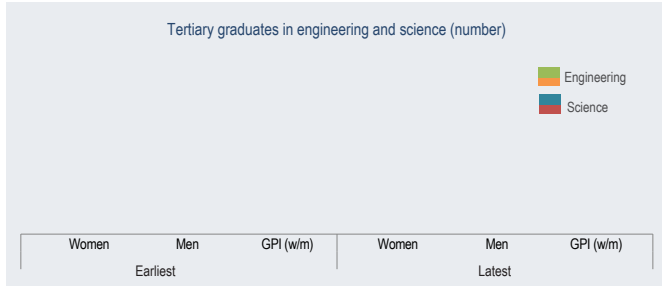
	Earliest	Latest
Dependency	86	73
Child dependency ratio	6	5
Old age dependency ratio	92	78
Total dependency ratio

	Earliest	Latest
Maternal health	93	119
Adolescent fertility rate	10	6
Total fertility rate	-	591
Maternal mortality ratio	4	9
Contraceptive use, any method (%)	0.0	0.0
Condom use (%)	61	80
Births attended by skilled health personnel (%)	76	85
Antenatal care coverage, At least one time (%)	48	59
Antenatal care coverage, At least four times (%)

	Earliest		Latest	
	Women	Men	Women	Men
Inequality
Youth not in education, employment or training (%)

	Earliest		Latest	
	Women	Men	Women	Men
Literacy	51	33
Youth illiteracy rate (%)
Adult illiteracy rate (%)

	Earliest		Latest	
	Women	Men	Women	Men
Work	34	67
Youth employment to population ratio (%)
Adult employment to population ratio (%)

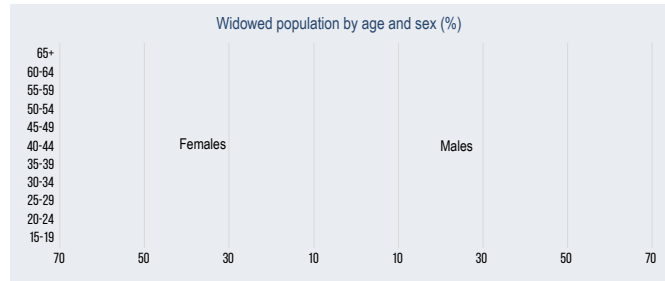




West Kordofan



	Latest
Total population (number)	1730934
Total population (%)	4
Sex ratio (males per 100 females)	95
Female early marriage before age 18 (%)	41



59



	Earliest		Latest	
	Women	Men	Women	Men
Population
Life expectancy at birth (years)
Population below 15 years (%)	45	43	40	39
Population aged 15-64 years (%)	52	54	57	58
Population aged 65+ (%)	3	3	3	3

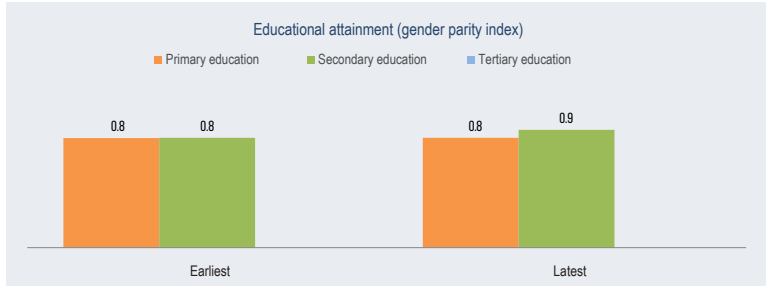
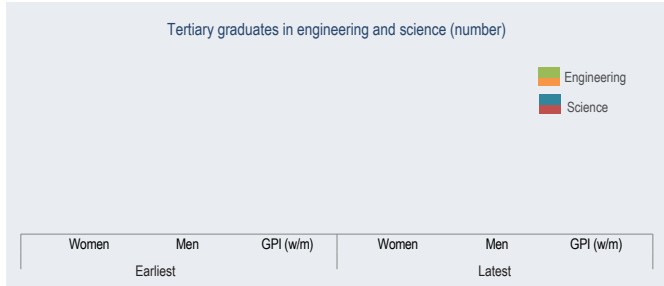
	Earliest	Latest
Dependency
Child dependency ratio	83	69
Old age dependency ratio	6	5
Total dependency ratio	89	74

	Earliest	Latest
Maternal health
Adolescent fertility rate	63	91
Total fertility rate	8	6
Maternal mortality ratio
Contraceptive use, any method (%)	...	6
Condom use (%)	0.0	0.0
Births attended by skilled health personnel (%)	...	66
Antenatal care coverage, At least one time (%)	...	65
Antenatal care coverage, At least four times (%)	...	28

	Earliest		Latest	
	Women	Men	Women	Men
Inequality
Youth not in education, employment or training (%)

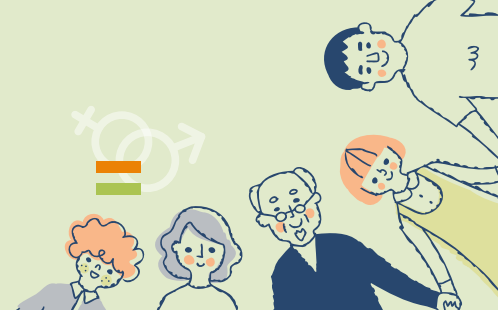
	Earliest		Latest	
	Women	Men	Women	Men
Literacy
Youth illiteracy rate (%)
Adult illiteracy rate (%)

	Earliest		Latest	
	Women	Men	Women	Men
Work
Youth employment to population ratio (%)
Adult employment to population ratio (%)

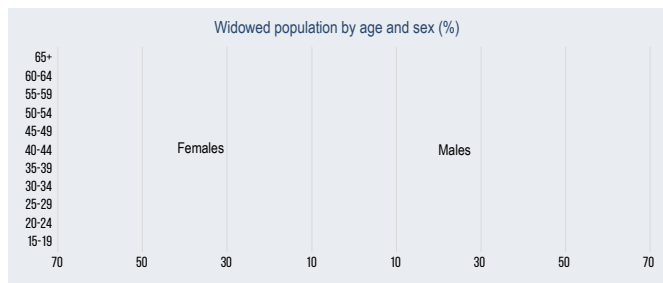




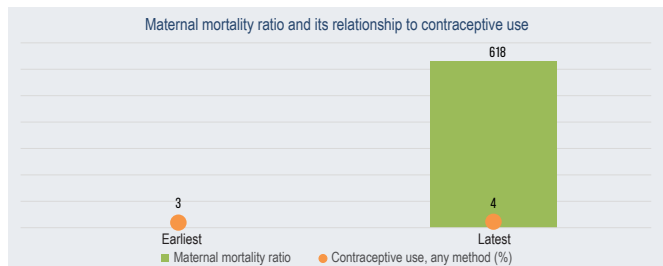
North Darfur



	Latest
Total population (number)	2827153
Total population (%)	7
Sex ratio (males per 100 females)	103
Female early marriage before age 18 (%)	47



59



	Earliest		Latest	
	Women	Men	Women	Men
Population	58	58
Life expectancy at birth (years)	38	38
Population below 15 years (%)	40	40	58	60
Population aged 15-64 years (%)	57	58	3	3
Population aged 65+ (%)	3	3

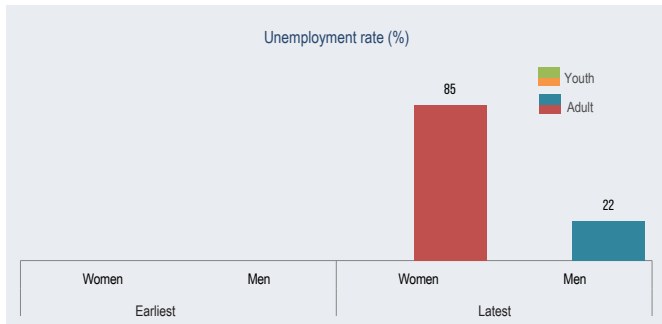
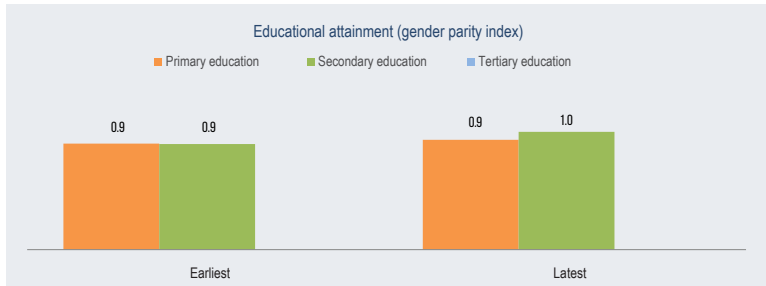
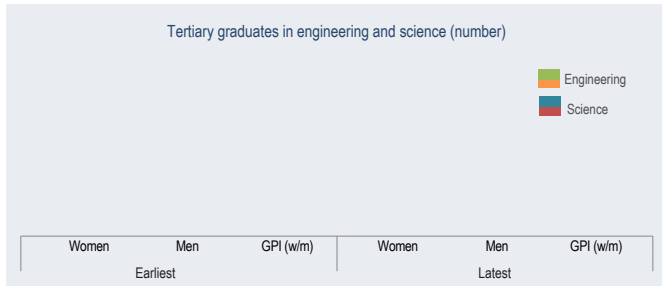
	Earliest	Latest
Dependency	70	63
Child dependency ratio	5	5
Old age dependency ratio	75	68

	Earliest	Latest
Maternal health	85	100
Adolescent fertility rate	10	7
Total fertility rate	...	618
Maternal mortality ratio	3	4
Contraceptive use, any method (%)	0.0	0.0
Condom use (%)	65	61
Births attended by skilled health personnel (%)	68	69
Antenatal care coverage, At least one time (%)	33	37
Antenatal care coverage, At least four times (%)

	Earliest		Latest	
	Women	Men	Women	Men
Inequality
Youth not in education, employment or training (%)

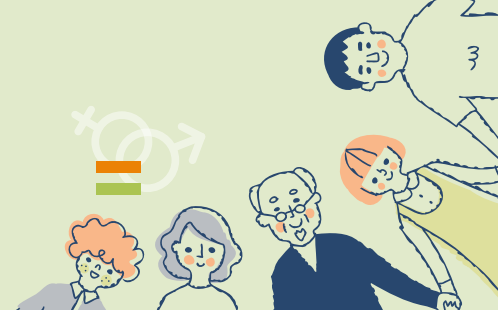
	Earliest		Latest	
	Women	Men	Women	Men
Literacy	45	27
Youth illiteracy rate (%)
Adult illiteracy rate (%)

	Earliest		Latest	
	Women	Men	Women	Men
Work	29	48
Youth employment to population ratio (%)
Adult employment to population ratio (%)

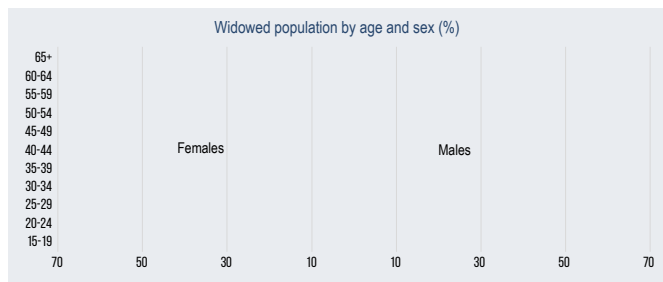




East Darfur



	Latest
Total population (number)	1605653
Total population (%)	4
Sex ratio (males per 100 females)	109
Female early marriage before age 18 (%)	57



59



	Earliest		Latest	
	Women	Men	Women	Men
Population
Life expectancy at birth (years)
Population below 15 years (%)	38	39	35	35
Population aged 15-64 years (%)	59	59	63	62
Population aged 65+ (%)	3	2	2	2

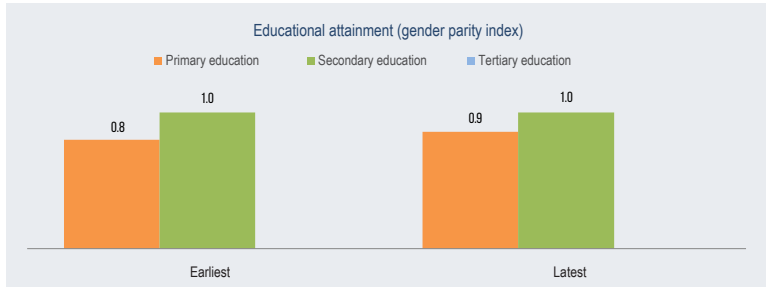
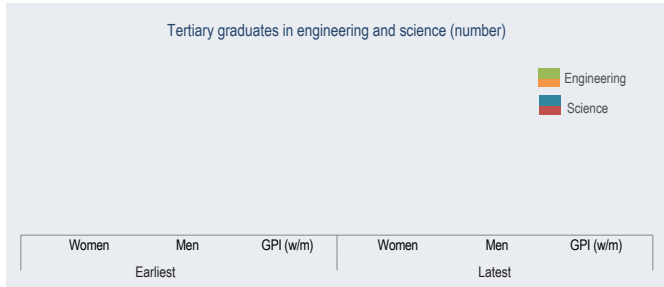
	Earliest	Latest
Dependency
Child dependency ratio	65	56
Old age dependency ratio	4	3
Total dependency ratio	69	59

	Earliest	Latest
Maternal health
Adolescent fertility rate	...	112
Total fertility rate	...	6
Maternal mortality ratio
Contraceptive use, any method (%)	...	6
Condom use (%)	0.0	0.0
Births attended by skilled health personnel (%)	...	61
Antenatal care coverage, At least one time (%)	...	83
Antenatal care coverage, At least four times (%)	...	47

	Earliest		Latest	
	Women	Men	Women	Men
Inequality
Youth not in education, employment or training (%)

	Earliest		Latest	
	Women	Men	Women	Men
Literacy
Youth illiteracy rate (%)
Adult illiteracy rate (%)

	Earliest		Latest	
	Women	Men	Women	Men
Work
Youth employment to population ratio (%)
Adult employment to population ratio (%)

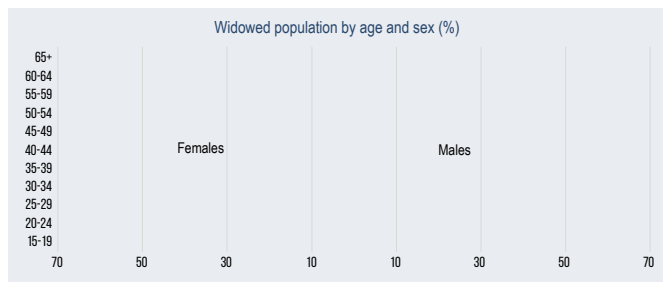




Central Darfur



	Latest
Total population (number)	757408
Total population (%)	2
Sex ratio (males per 100 females)	95
Female early marriage before age 18 (%)	55



59



	Earliest		Latest	
	Women	Men	Women	Men
Population
Life expectancy at birth (years)
Population below 15 years (%)	45	43	41	39
Population aged 15-64 years (%)	52	55	57	59
Population aged 65+ (%)	3	2	3	2

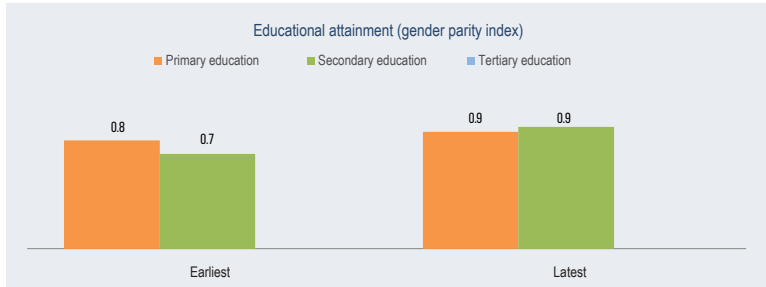
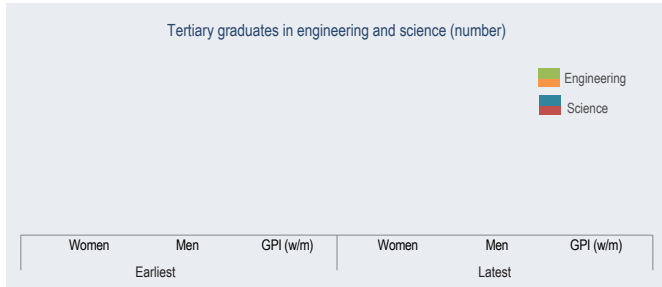
	Earliest	Latest
Dependency
Child dependency ratio	82	69
Old age dependency ratio	5	4
Total dependency ratio	87	73

	Earliest	Latest
Maternal health
Adolescent fertility rate	...	113
Total fertility rate	...	6
Maternal mortality ratio
Contraceptive use, any method (%)	...	3
Condom use (%)	0.0	0.2
Births attended by skilled health personnel (%)	...	36
Antenatal care coverage, At least one time (%)	...	68
Antenatal care coverage, At least four times (%)	...	47

	Earliest		Latest	
	Women	Men	Women	Men
Inequality
Youth not in education, employment or training (%)

	Earliest		Latest	
	Women	Men	Women	Men
Literacy
Youth illiteracy rate (%)
Adult illiteracy rate (%)

	Earliest		Latest	
	Women	Men	Women	Men
Work
Youth employment to population ratio (%)
Adult employment to population ratio (%)

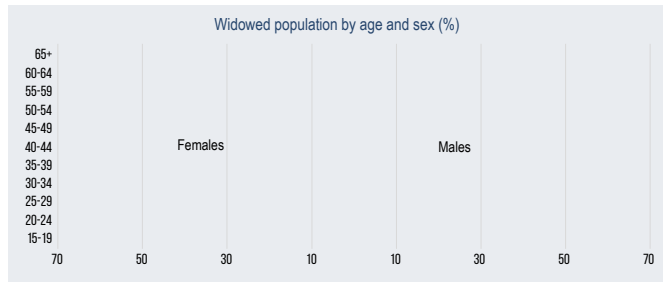




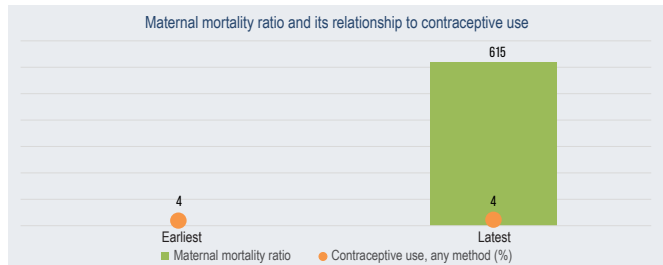
West Darfur



	Latest
Total population (number)	1018581
Total population (%)	2
Sex ratio (males per 100 females)	96
Female early marriage before age 18 (%)	44



59



	Earliest		Latest	
	Women	Men	Women	Men
Population	58	58
Life expectancy at birth (years)	44	41	40	39
Population below 15 years (%)	53	56	57	59
Population aged 15-64 years (%)	3	3	3	3
Population aged 65+ (%)

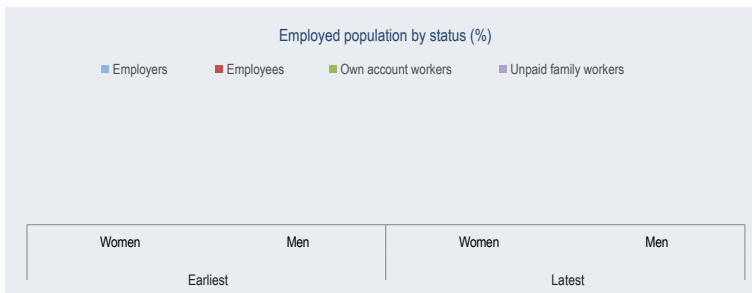
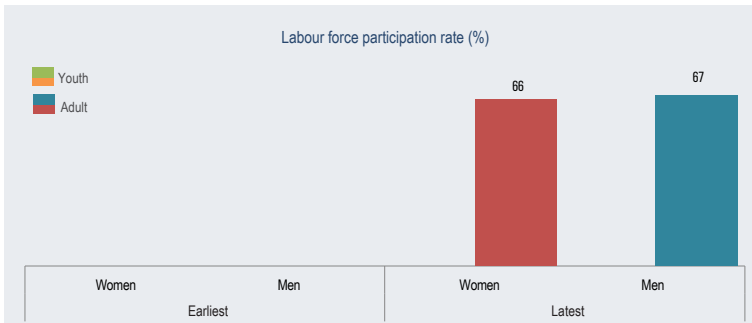
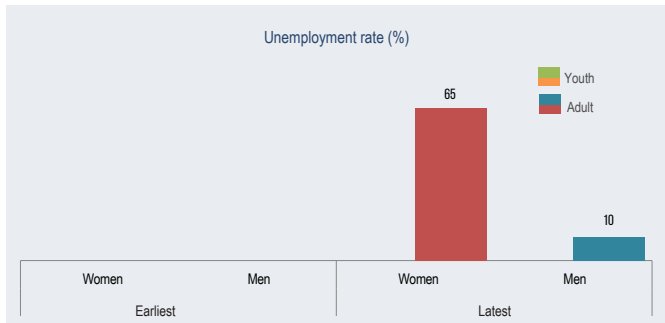
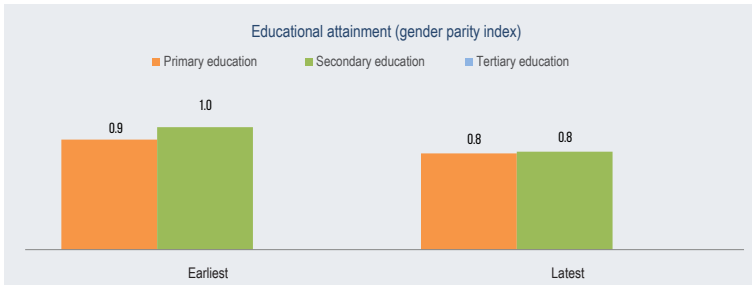
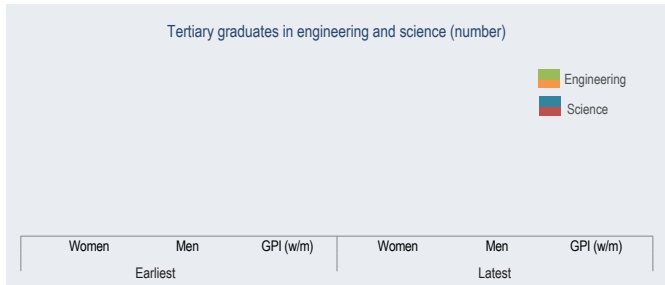
	Earliest	Latest
Dependency	78	68
Child dependency ratio	6	5
Old age dependency ratio	84	72

	Earliest	Latest
Maternal health	84	117
Adolescent fertility rate	7	7
Total fertility rate	-	615
Maternal mortality ratio	4	4
Contraceptive use, any method (%)	0.0	0.0
Condom use (%)	33	58
Births attended by skilled health personnel (%)	62	75
Antenatal care coverage, At least one time (%)	46	56
Antenatal care coverage, At least four times (%)

	Earliest		Latest	
	Women	Men	Women	Men
Inequality
Youth not in education, employment or training (%)

	Earliest		Latest	
	Women	Men	Women	Men
Literacy	60	29
Youth illiteracy rate (%)
Adult illiteracy rate (%)

	Earliest		Latest	
	Women	Men	Women	Men
Work	54	60
Youth employment to population ratio (%)
Adult employment to population ratio (%)

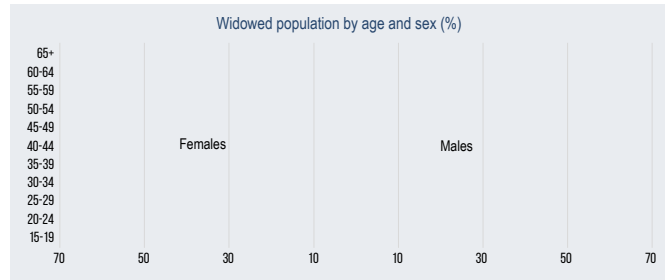




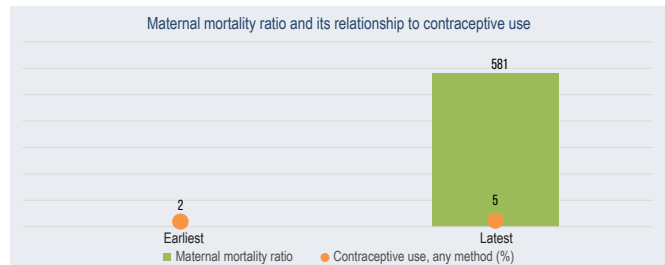
South Darfur



	Latest
Total population (number)	3747786
Total population (%)	9
Sex ratio (males per 100 females)	108
Female early marriage before age 18 (%)	56



59



	Earliest		Latest	
	Women	Men	Women	Men
Population				
Life expectancy at birth (years)	--	--	58	57
Population below 15 years (%)	39	39	35	35
Population aged 15-64 years (%)	58	59	62	62
Population aged 65+ (%)	3	2	3	2

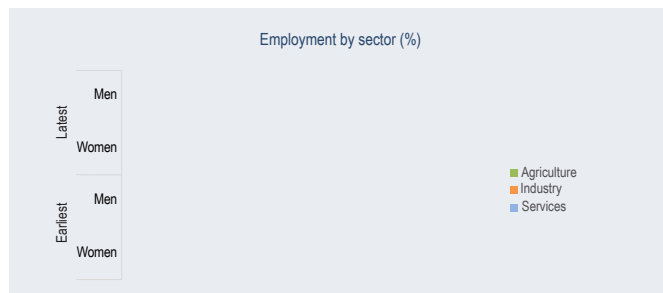
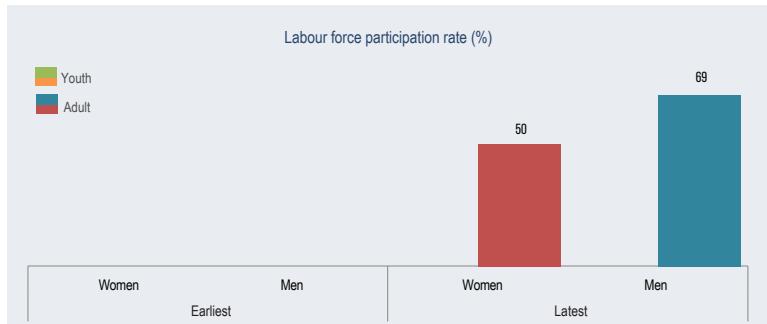
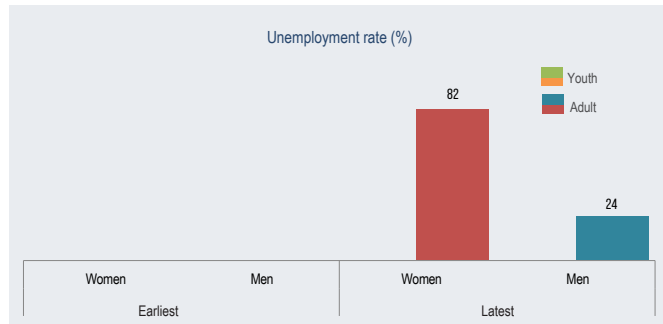
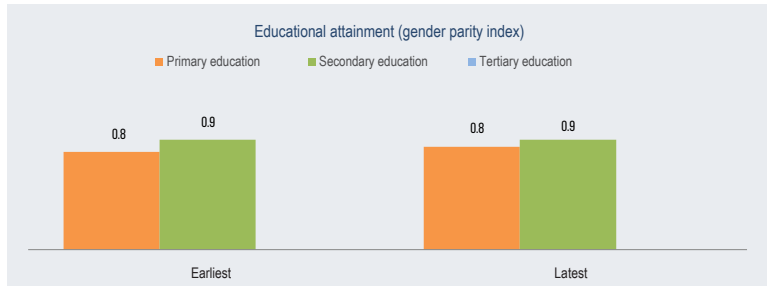
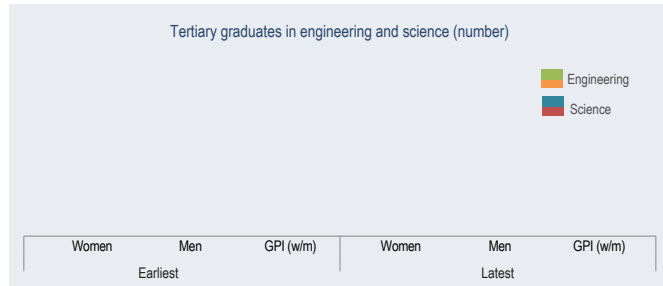
	Earliest	Latest
Dependency		
Child dependency ratio	66	56
Old age dependency ratio	4	4
Total dependency ratio	71	60

	Earliest	Latest
Maternal health		
Adolescent fertility rate	94	125
Total fertility rate	8	7
Maternal mortality ratio	--	581
Contraceptive use, any method (%)	2	5
Condom use (%)	0.0	0.0
Births attended by skilled health personnel (%)	50	49
Antenatal care coverage, At least one time (%)	67	62
Antenatal care coverage, At least four times (%)	41	41

	Earliest		Latest	
	Women	Men	Women	Men
Inequality				
Youth not in education, employment or training (%)	--	--	--	--

	Earliest		Latest	
	Women	Men	Women	Men
Literacy				
Youth illiteracy rate (%)	--	--	--	--
Adult illiteracy rate (%)	--	--	52	34

	Earliest		Latest	
	Women	Men	Women	Men
Work				
Youth employment to population ratio (%)	--	--	--	--
Adult employment to population ratio (%)	--	--	32	53



o Definitions



Governorates or cities information	
Sex ratio (males per 100 females)	Sex ratio is the demographic concept that measures the proportion of males to females in a given population. It is usually measured as the number of males per 100 females.
Female early marriage before age 18 (%)	Proportion of women aged 20-24 years who were married or in a union before age 18.
Population and dependency	
Life expectancy at birth (years)	The average number of years that a newborn could expect to live, if he or she were to pass through life exposed to the sex- and age-specific death rates prevailing at the time of his or her birth, for a specific year, in a given country, territory or geographic area.
Population below 15 years (%)	Percentage of the population in the country or area below age 15, calculated separately for each sex.
Population aged 15-64 years (%)	Percentage of the population in the country or area aged 15-64 years, calculated separately for each sex.
Population aged 65+ (%)	Percentage of the population in the country or area aged 65 and above, calculated separately for each sex.

Child dependency ratio	Ratio of the population aged 0-14 to the population aged 15-64. Ratio is presented as number of dependants per 100 persons of working age (15-64).
Old-age dependency ratio	Ratio of the population aged 65 years or above to the population aged 15-64. Ratio is presented as number of dependants per 100 persons of working age (15-64).
Total dependency ratio	Ratio of the combined child population (0-14) and old-age population (65 and above) to the working-age population (15-64). It is expressed as the number of dependents for every 100 workers.
Widowed population by age and sex (%)	Widowed indicates people whose last marriage ended with the death of their spouse and they had not remarried distributed by age group in percentage. The married widow survivor is counted out of all married with alive spouses in each age group for each sex. The total for each sex should not be 100 per cent.
Maternal health	
Adolescent fertility (15-19 years)	Adolescent birth rate measures the annual number of births to women aged 15-19 years per 1,000 women in that age group. It represents the risk of childbearing among adolescent women aged 15-19. It is also referred to as the age-specific fertility rate for women aged 15-19. Adolescent birth rate is generally computed as a ratio. The numerator is the number of live births to women aged 15-19, and the denominator an estimate of exposure to childbearing by women aged 15-19. The numerator and the denominator are calculated differently for civil registration, survey and census data.
Total fertility rate	Average number of live births a woman would have by age 50 if she were subject, throughout her life, to the age-specific fertility rates observed in a given year. Its calculation assumes that there is no mortality. It is expressed as children per woman.

Maternal mortality ratio	Maternal Mortality Ratio (MMR) is the annual number of female deaths from any cause related to or aggravated by pregnancy or its management (excluding accidental or incidental causes) during pregnancy and childbirth or within 42 days of termination of pregnancy, irrespective of the duration and site of the pregnancy, for a specified year (expressed per 100,000 live births).
Contraceptive use, any method (%)	Contraceptive prevalence rate is the proportion of women of reproductive age who are using (or whose partner is using) a contraceptive method at a given point in time.
Condom use (%)	
Births attended by skilled health personnel (%)	Percentage of births attended by skilled health personnel (doctors, nurses or midwives).
Antenatal care coverage, at least one time (%)	Percentage of women aged 15-49 with a live birth in a given time period that received antenatal care provided by skilled health personnel at least once during their pregnancy.
Antenatal care coverage, at least four times (%)	Percentage of women aged 15-49 with a live birth in a given time period that received antenatal care by any provider four or more times during their pregnancy.
Inequality	
Youth not in education, employment or training (%)	This indicator conveys the proportion of youth (aged 15-24) not in education, employment or training (also known as "the youth NEET rate"). (Unemployed youth + Youth outside the labour force) - (Unemployment youth in education or training + Youth outside the labour force in education or training)/Youth population *100.
Youth illiteracy rate (%)	Percentage of the youth aged 15-24 which cannot both read and write with understanding over total population in the same age class.

Adult illiteracy rate (%)	Percentage of the population aged 15 and above which cannot both read and write with understanding over total population in the same age class.
Youth unemployment rate (%)	Number of unemployed youth people divided by the total youth labour multiplied by 100.
Adult unemployment rate (%)	Number of unemployed people divided by the total labour multiplied by 100.
Education	
Gender Parity Index in education	Gender Parity Index (GPI) reflects females' level of access to education compared to that of males. This is calculated for each school phase. ESCWA calculates GPI as the ratio of girls to boys.
Tertiary graduates in engineering (number)	Engineering, manufacturing and construction: include engineering and engineering trades, manufacturing and production process, architecture and building according to ISCED 5A.
Tertiary graduates in science (number)	Science include: life sciences, physical sciences, mathematics and statistics according to ISCED 5B.
Work	
Youth labour force participation rate (%)	$\text{Employed youth} + \text{Unemployed youth} / \text{Total youth population} * 100.$
Adult labour force participation rate (%)	Labour force participation rate is a measure of the proportion of a country's working-age population that engages actively in the labour market, either by working or looking for work. It provides an indication of the relative size of the supply of labour available to engage in the production of goods and services. The labour force participation rate is calculated by expressing the number of persons in the labour force as a percentage of the working-age population.

Youth employment to population ratio (%)	Youth employed/Total youth population *100.																				
Adult employment to population ratio (%)	Employment-to-population ratio is defined as the proportion of a country's working-age population that is employed. It is calculated by dividing the number of persons in employment as a percentage of the population for the corresponding sex and age group (either working-age or youth). A high ratio means that a large proportion of a country's population is employed, while a low ratio means that a large share of the population is not involved directly in market-related activities, because they are either unemployed or (more likely) out of the labour force altogether.																				
Employment by sector																					
Employment in: - Agriculture (%) - Industry (%) - Services (%)	<p>There are three broad sectors – agriculture, industry and services – each expressing a percentage of total employment. The indicator shows employment growth and decline on a broad sectoral scale, while highlighting differences in trends and levels between developed and developing economies. The agriculture, industry and services sectors are defined by the International Standard Industrial Classification (ISIC) System. The agriculture sector comprises activities in agriculture, hunting, forestry and fishing, in accordance with major division 1 of ISIC 2, categories A and B of ISIC 3 and category A of ISIC 4. The industry sector comprises mining and quarrying, manufacturing, construction and public utilities (electricity, gas and water), in accordance with major divisions 2 to 5 of ISIC 2, categories C to F of ISIC 3 or categories B to F of ISIC 4. The services sector consists of wholesale and retail trade, restaurants and hotels, transport, storage and communications, finance, insurance, real estate and business services, and community, social and personal services. This sector corresponds to major divisions 6 to 9 of ISIC 2 or categories G to P of ISIC 3. See the table below for a representation of how the aggregate sectors are calculated according to the different ISIC revisions:</p> <table border="0"> <tr> <td>Aggregate sector</td> <td>-----ISIC 2 major divisions-----</td> <td>ISIC 3 categories-----</td> <td>ISIC 4 categories</td> </tr> <tr> <td>Agriculture</td> <td>----- 1 -----</td> <td>A+B-----</td> <td>A</td> </tr> <tr> <td>Industry</td> <td>----- 2-5 -----</td> <td>C-F -----</td> <td>B-F</td> </tr> <tr> <td>Services</td> <td>----- 6-9 -----</td> <td>G-Q -----</td> <td>G-U</td> </tr> <tr> <td>Sector not adequately defined</td> <td>-- 0-----</td> <td>X -----</td> <td>n/a</td> </tr> </table>	Aggregate sector	-----ISIC 2 major divisions-----	ISIC 3 categories-----	ISIC 4 categories	Agriculture	----- 1 -----	A+B-----	A	Industry	----- 2-5 -----	C-F -----	B-F	Services	----- 6-9 -----	G-Q -----	G-U	Sector not adequately defined	-- 0-----	X -----	n/a
Aggregate sector	-----ISIC 2 major divisions-----	ISIC 3 categories-----	ISIC 4 categories																		
Agriculture	----- 1 -----	A+B-----	A																		
Industry	----- 2-5 -----	C-F -----	B-F																		
Services	----- 6-9 -----	G-Q -----	G-U																		
Sector not adequately defined	-- 0-----	X -----	n/a																		

Employed population by status	
Employers (%)	Employers are those workers who, working on their own account or with one or a few partners, hold the type of jobs defined as a “self-employment jobs” (i.e. jobs where the remuneration is directly dependent upon the profits derived from the goods and services produced), and, in this capacity, have engaged, on a continuous basis, one or more persons to work for them as employee(s).
Employees (%)	Employees are all those workers who hold the type of jobs defined as “paid employment jobs”, where the incumbents hold explicit (written or oral) or implicit employment contracts that give them a basic remuneration that is not directly dependent upon the revenue of the unit for which they work.
Own account workers (%)	Own-account workers are those workers who, working on their own account or with one or more partners, hold the type of jobs defined as a “self-employment jobs”, and have not engaged on a continuous basis any employees to work for them.
Unpaid family workers (%)	Contributing family workers are those workers who hold “self-employment jobs” as own-account workers in a market-oriented establishment operated by a related person living in the same household.

o Sources



Indicator	Earliest year	Latest year
Total population		2020: Central Bureau of Statistics (CBS), Projection of Census 2008
Sex ratio		2020: CBS, Projection of Census 2008
Female early marriage before age 18		2020: CBS, Projection of Census 2008
Life expectancy at birth	2008: CBS, Census https://catalog.ihnsn.org/catalog/4216/related-materials	
Population below 15 years	2015: CBS, Projection of Census 2008	2020: CBS, Projection of Census 2008
Population aged 15-64 years	2015: CBS, Projection of Census 2008	2020: CBS, Projection of Census 2008
Population aged 65+	2015: CBS, Projection of Census 2008	2020: CBS, Projection of Census 2008
Widowed population by age and sex		

Adolescent fertility	2000: ESCWA calculation based on MICS 2000's microdata	2014: MICS 2014, page 165 https://mics.unicef.org/files?job=W1siZiIsIjIwMTYvMDUvMTgvMjEvNTkvNTEvODg3L1N1ZGFuXzlwMTRfTUIDU19FbmdsaXNoLnBkZiJdXQ&sha=32907fc39e6e2e6e
Total fertility rate	2000: ESCWA calculation based on MICS 2000's microdata	2014: MICS 2014, page 165 https://mics.unicef.org/files?job=W1siZiIsIjIwMTYvMDUvMTgvMjEvNTkvNTEvODg3L1N1ZGFuXzlwMTRfTUIDU19FbmdsaXNoLnBkZiJdXQ&sha=32907fc39e6e2e6e
Maternal mortality ratio	2008: CBS, Census https://catalog.ihsn.org/catalog/4216/related-materials	
Contraceptive use, any method	2010: MICS 2010, page 144 https://mics-surveys-prod.s3.amazonaws.com/MICS4/Middle%20East%20and%20North%20Africa/Sudan/2010/Final/Sudan%202010%20MICS_English.pdf	2014: MICS 2014, page 169 https://mics.unicef.org/files?job=W1siZiIsIjIwMTYvMDUvMTgvMjEvNTkvNTEvODg3L1N1ZGFuXzlwMTRfTUIDU19FbmdsaXNoLnBkZiJdXQ&sha=32907fc39e6e2e6e
Condom use		2014: MICS 2014, page 169 https://mics.unicef.org/files?job=W1siZiIsIjIwMTYvMDUvMTgvMjEvNTkvNTEvODg3L1N1ZGFuXzlwMTRfTUIDU19FbmdsaXNoLnBkZiJdXQ&sha=32907fc39e6e2e6e

Births attended by skilled health personnel	2010: MICS 2010, page 159 https://mics-surveys-prod.s3.amazonaws.com/MICS4/Middle%20East%20and%20North%20Africa/Sudan/2010/Final/Sudan%202010%20MICS_English.pdf	2014: MICS 2014, page 184 https://mics.unicef.org/files?job=W1siZilsljlwMTYvMDUvMTgvMjEvNTkvNTEvODg3L1N1ZGFuXzlwMTRfTUIDU19FbmDSAxNoLnBkZiJdXQ&sha=32907fc39e6e2e6e
Antenatal care coverage, at least one time	2010: MICS 2010, page 154 https://mics-surveys-prod.s3.amazonaws.com/MICS4/Middle%20East%20and%20North%20Africa/Sudan/2010/Final/Sudan%202010%20MICS_English.pdf	2014: MICS 2014, page 179 https://mics.unicef.org/files?job=W1siZilsljlwMTYvMDUvMTgvMjEvNTkvNTEvODg3L1N1ZGFuXzlwMTRfTUIDU19FbmDSAxNoLnBkZiJdXQ&sha=32907fc39e6e2e6e
Antenatal care coverage, at least four times	2010: MICS 2010, page 154 https://mics-surveys-prod.s3.amazonaws.com/MICS4/Middle%20East%20and%20North%20Africa/Sudan/2010/Final/Sudan%202010%20MICS_English.pdf	2014: MICS 2014, page 179 https://mics.unicef.org/files?job=W1siZilsljlwMTYvMDUvMTgvMjEvNTkvNTEvODg3L1N1ZGFuXzlwMTRfTUIDU19FbmDSAxNoLnBkZiJdXQ&sha=32907fc39e6e2e6e
Youth not in education, employment or training		

Youth illiteracy rate	2008: CBS, Census https://catalog.ihnsn.org/catalog/4216/related-materials	2011: Sudan Labour Force Survey 2011, page 26, table 4.8: Literacy rate, by age-group, sex and locality, 2011 (Calculated by ESCWA) https://www.ilo.org/surveyLib/index.php/catalog/5350/related-materials
Adult illiteracy rate	2008: CBS, Census https://catalog.ihnsn.org/catalog/4216/related-materials	2011: Sudan Labour Force Survey 2011, page 27, table 4.10: Literacy rate (15+), by State, sex and locality, 2011 (Calculated by ESCWA) https://www.ilo.org/surveyLib/index.php/catalog/5350/related-materials
Youth unemployment rate	2008: CBS, Census https://catalog.ihnsn.org/catalog/4216/related-materials	2011: Sudan Labour Force Survey 2011, page 102, table 7.1: Unemployment rate, by age-group, sex and locality, 2011 https://www.ilo.org/surveyLib/index.php/catalog/5350/related-materials
Adult unemployment rate	2008: CBS, Census https://catalog.ihnsn.org/catalog/4216/related-materials	2011: Sudan Labour Force Survey 2011, page 103, table 7.4: Unemployment rate, by State, sex and locality, 2011 https://www.ilo.org/surveyLib/index.php/catalog/5350/related-materials
Gender Parity Index, primary education		2015: CBS, Administrative data (Ministry of Education)

Gender Parity Index, secondary education		2015: CBS, Administrative data (Minstry of Education)
Gender Parity Index, tertiary education		2015: CBS, Administrative data (Minstry of Education)
Tertiary graduates in engineering		2015: CBS, Administrative data (Minstry of Education)
Tertiary graduates in science		2015: CBS, Administrative data (Minstry of Education)
Youth labour force participation rate	2008: CBS, Census https://catalog.ihsn.org/catalog/4216/related-materials	2011: Sudan Labour Force Survey 2011, page 42, table 5.3: Labour force participation rate, by age-group, sex and locality, 2011 https://www.ilo.org/surveyLib/index.php/catalog/5350/related-materials
Adult labour force participation rate	2008: CBS, Census https://catalog.ihsn.org/catalog/4216/related-materials	2011: Sudan Labour Force Survey 2011, page 43, table 5.6: Labour force participation rate, by State, sex and locality, 2011 https://www.ilo.org/surveyLib/index.php/catalog/5350/related-materials
Youth employment to population ratio	2008: CBS, Census https://catalog.ihsn.org/catalog/4216/related-materials	2011: Sudan Labour Force Survey 2011, page 52, table 6.1: Employment-to-population ratio, by age-group, sex and locality, 2011 https://www.ilo.org/surveyLib/index.php/catalog/5350/related-materials

Adult employment to population ratio	2008: CBS, Census https://catalog.ihsn.org/catalog/4216/related-materials	2011: Sudan Labour Force Survey 2011, page 53, table 6.4: Employment to population ratio, by State, sex and locality, 2011 https://www.ilo.org/surveyLib/index.php/catalog/5350/related-materials
Employment by sector		2011: Sudan Labour Force Survey 2011, page 59, table 6.10: Distribution of employed population by industry, sex and locality, 2011 https://www.ilo.org/surveyLib/index.php/catalog/5350/related-materials
Employed population by status		2011: Sudan Labour Force Survey 2011, page 56, table 6.8: Distribution of status in employment, by sex and locality, 2011 https://www.ilo.org/surveyLib/index.php/catalog/5350/related-materials

23-00056