



Shared Prosperity Dignified Life



# Saudi Arabia National Gender Lens Pocketbook 2022

© 2023 United Nations  
All rights reserved worldwide

Photocopies and reproductions of excerpts are allowed with proper credits.

All queries on rights and licenses, including subsidiary rights, should be addressed to the United Nations Economic and Social Commission for Western Asia (ESCWA), email: [publications-escwa@un.org](mailto:publications-escwa@un.org).

The findings, interpretations and conclusions expressed in this publication are those of the authors and do not necessarily reflect the views of the United Nations or its officials or Member States.

The designations employed and the presentation of material in this publication do not imply the expression of any opinion whatsoever on the part of the United Nations concerning the legal status of any country, territory, city or area or of its authorities, or concerning the delimitation of its frontiers or boundaries.

Links contained in this publication are provided for the convenience of the reader and are correct at the time of issue. The United Nations takes no responsibility for the continued accuracy of that information or for the content of any external website.

References have, wherever possible, been verified.

Mention of commercial names and products does not imply the endorsement of the United Nations.

References to dollars (\$) are to United States dollars, unless otherwise stated.

Symbols of United Nations documents are composed of capital letters combined with figures. Mention of such a symbol indicates a reference to a United Nations document.

United Nations publication issued by ESCWA, United Nations House, Riad El Solh Square,

P.O. Box: 11-8575, Beirut, Lebanon.

Website: [www.unescwa.org](http://www.unescwa.org).

## o Acknowledgements

The General Authority for Statistics in collaboration with the Economic and Social Commission for Western Asia (ESCWA) completed the preparation and production of the "Saudi Arabia Gender Lens Pocketbook 2022".

## o Introduction

The Saudi Arabia Gender Lens Pocketbook 2022 provides a statistical visual portrait of 13 regions in Saudi Arabia to monitor the progress of 40 selected indicators on key gender issues such as population, education, inequality, health and work.

The Pocketbook illustrates the situation of females compared to males with regard to equality between women and men in a user-friendly format. The national automated pocketbook is developed on excel sheets with graphic visualizations and linked to secondary sheets for data entry and presents progress over a two-year period.

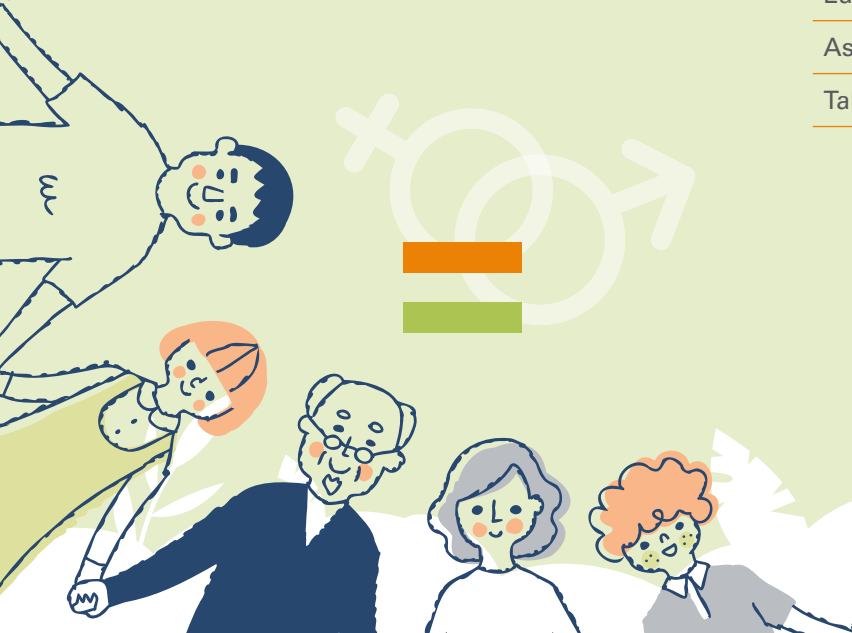
This National Gender Lens Pocketbook is designed to serve as a source of information on the issues of gender and women's empowerment at the subnational level to assist decision makers in formulating policies and programmes; and raise awareness on gender issues.





## o Saudi Arabia's regions

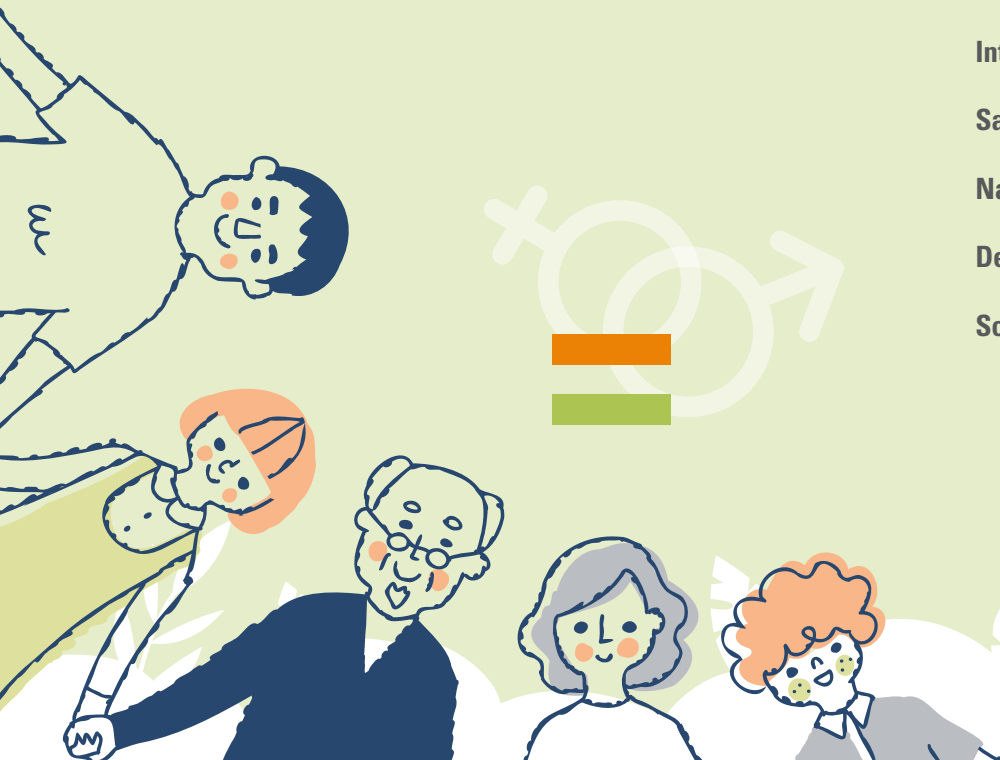
Riyadh	Ha'il
Makkah	Northern Borders
Al Madinah	Jizan
Al-Qassim	Najran
Eastern Province	Al Bahah
Asir	Al Jawf
Tabuk	

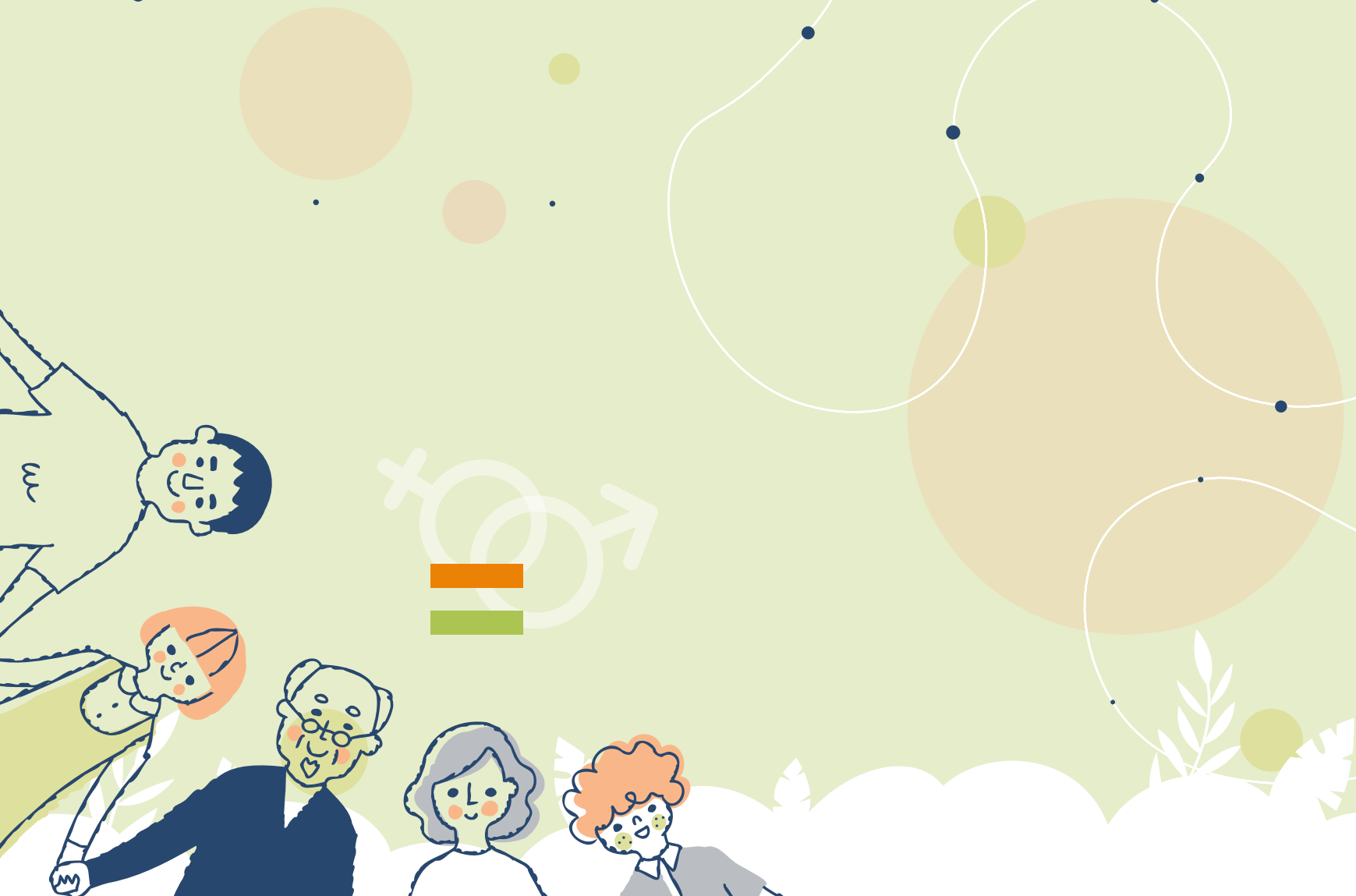




## o Contents

<b>Acknowledgements</b>	<b>1</b>
<b>Introduction</b>	<b>1</b>
<b>Saudi Arabia's regions</b>	<b>3</b>
<b>National profile</b>	<b>7</b>
<b>Definitions</b>	<b>35</b>
<b>Sources</b>	<b>41</b>





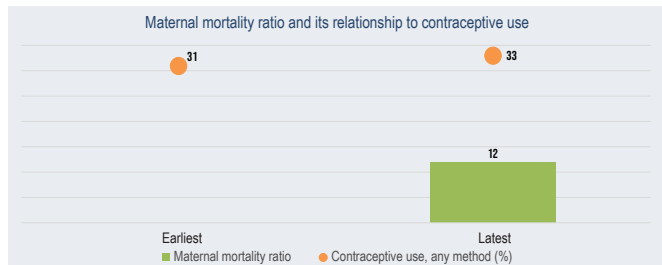
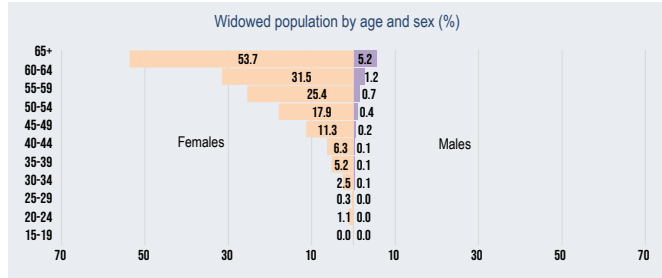




# Saudi Arabia



	Latest
Total population (number)	34218169
Total population (%)	100
Sex ratio (males per 100 females)	136
Female early marriage before age 18 (%)	...



	Earliest		Latest	
	Women	Men	Women	Men
Population	...	...	76	73
Life expectancy at birth (years)	...	...	28	22
Population below 15 years (%)	29	22	68	76
Population aged 15-64 years (%)	68	75	4	3
Population aged 65+ (%)	4	3	...	...

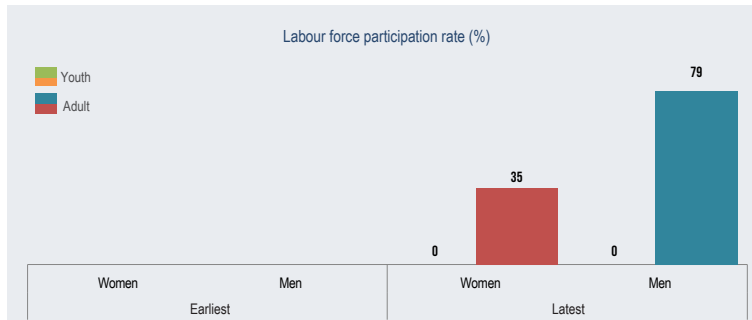
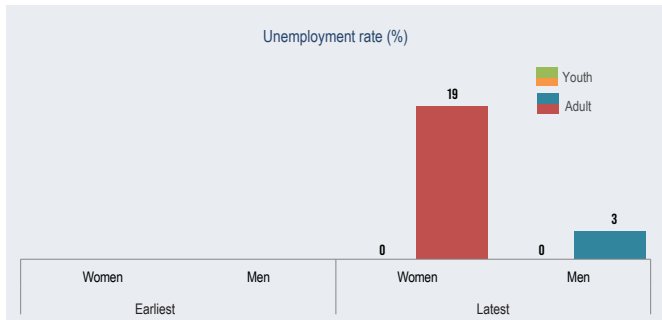
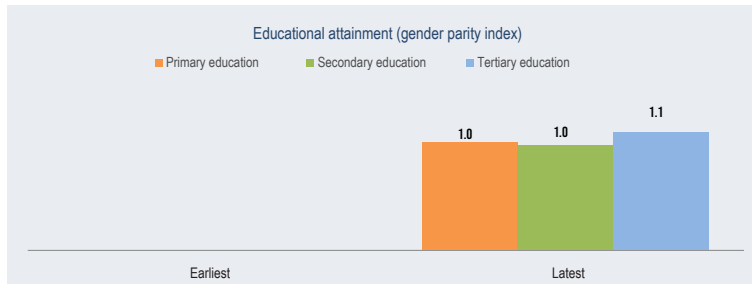
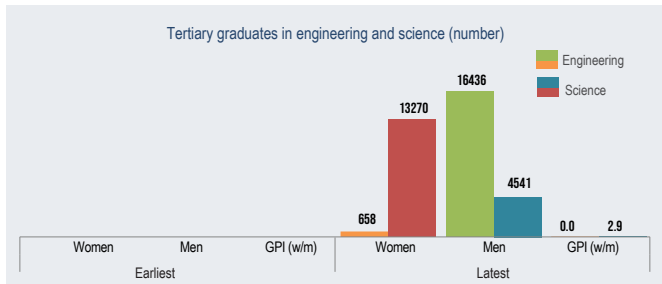
	Earliest	Latest
Dependency	...	...
Child dependency ratio	36	35
Old age dependency ratio	5	5
Total dependency ratio	40	39

	Earliest	Latest
Maternal health	...	...
Adolescent fertility rate	12	7
Total fertility rate	2	2
Maternal mortality ratio	...	12
Contraceptive use, any method (%)	31	33
Condom use (%)	...	...
Births attended by skilled health personnel (%)	100	99
Antenatal care coverage, At least one time (%)	...	95
Antenatal care coverage, At least four times (%)	...	80

	Earliest		Latest	
	Women	Men	Women	Men
Inequality	...	...	...	...
Youth not in education, employment or training (%)	...	...	...	...

	Earliest		Latest	
	Women	Men	Women	Men
Literacy	...	...	...	...
Youth illiteracy rate (%)	...	...	...	...
Adult illiteracy rate (%)	...	...	...	...

	Earliest		Latest	
	Women	Men	Women	Men
Work	...	...	...	...
Youth employment to population ratio (%)	...	...	81	97
Adult employment to population ratio (%)	...	...	...	...

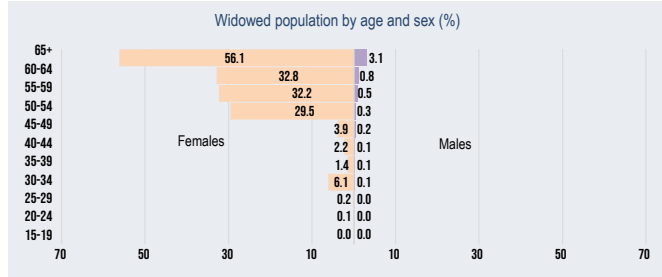




# Riyadh



	Latest
Total population (number)	8660885
Total population (%)	25
Sex ratio (males per 100 females)	146
Female early marriage before age 18 (%)	...



	Earliest		Latest	
	Women	Men	Women	Men
Population	...	...	...	...
Life expectancy at birth (years)	29	21	29	21
Population below 15 years (%)	68	77	69	77
Population aged 15-64 years (%)	3	2	3	2
Population aged 65+ (%)	...	...	...	...

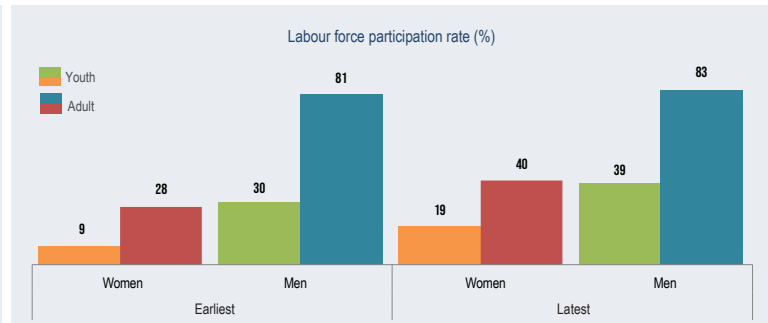
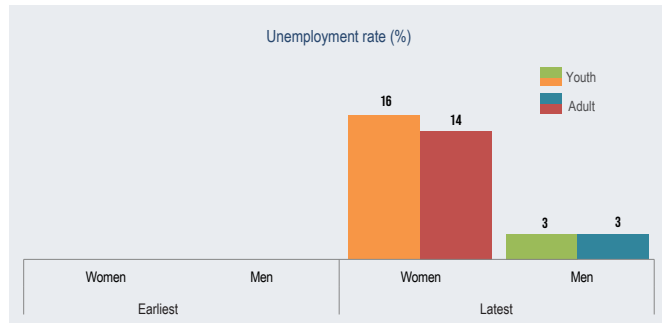
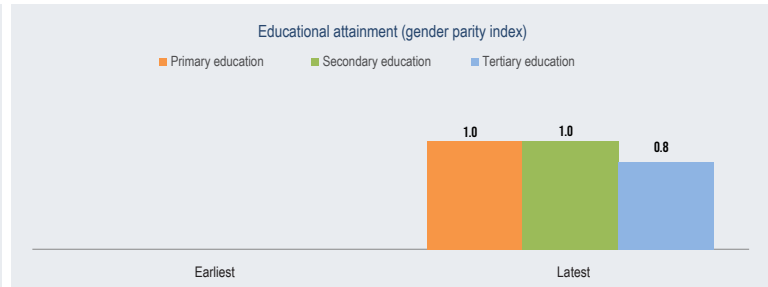
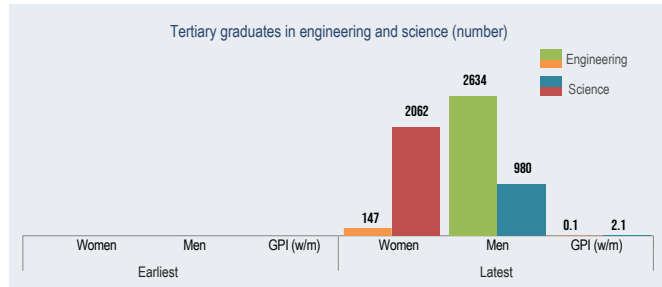
	Earliest	Latest
Dependency	...	...
Child dependency ratio	35	34
Old age dependency ratio	3	3
Total dependency ratio	38	37

	Earliest	Latest
Maternal health	...	...
Adolescent fertility rate	9	7
Total fertility rate	2	2
Maternal mortality ratio	...	...
Contraceptive use, any method (%)	34	40
Condom use (%)	...	...
Births attended by skilled health personnel (%)	100	99
Antenatal care coverage, At least one time (%)	...	...
Antenatal care coverage, At least four times (%)	...	...

	Earliest		Latest	
	Women	Men	Women	Men
Inequality	...	...	...	...
Youth not in education, employment or training (%)	...	...	...	...

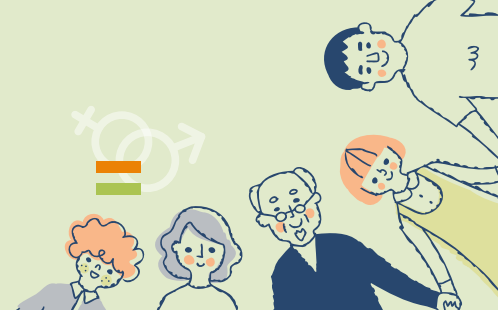
	Earliest		Latest	
	Women	Men	Women	Men
Literacy	...	...	...	...
Youth illiteracy rate (%)	...	...	1	1
Adult illiteracy rate (%)	...	...	5	2

	Earliest		Latest	
	Women	Men	Women	Men
Work	...	...	...	...
Youth employment to population ratio (%)	4	25	13	33
Adult employment to population ratio (%)	23	80	86	97

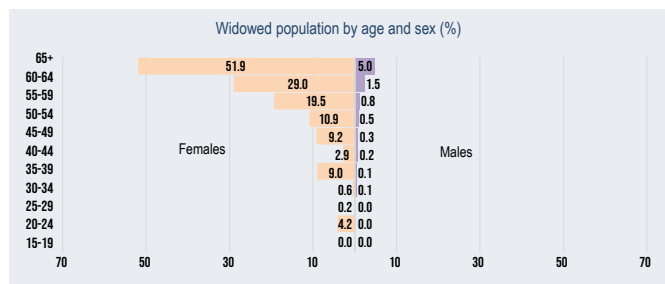




# Makkah



	Latest
Total population (number)	9033491
Total population (%)	26
Sex ratio (males per 100 females)	133
Female early marriage before age 18 (%)	...



	Earliest		Latest	
	Women	Men	Women	Men
Population	...	...	...	...
Life expectancy at birth (years)	27	21	27	20
Population below 15 years (%)	69	76	69	76
Population aged 15-64 years (%)	4	3	4	3
Population aged 65+ (%)	...	...	...	...

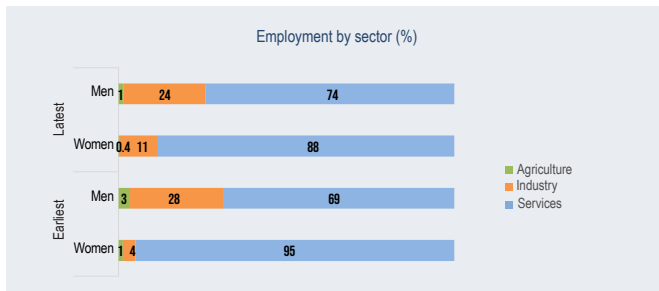
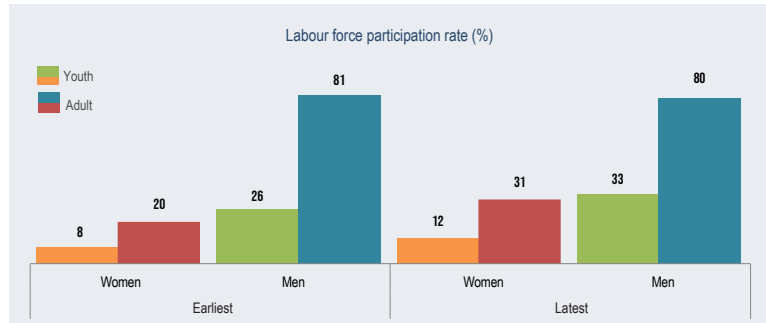
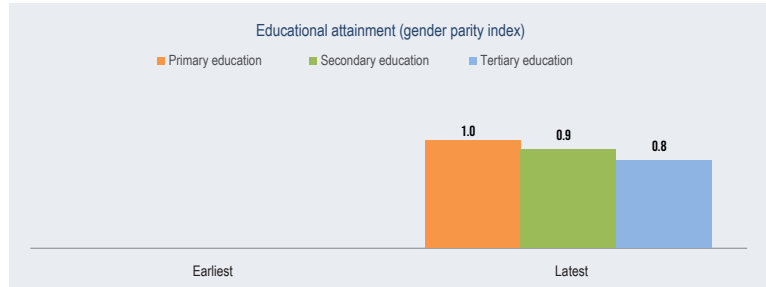
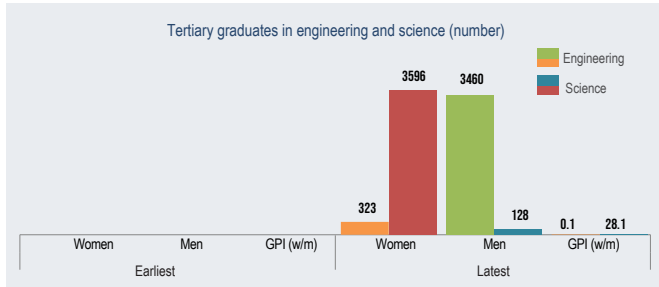
	Earliest	Latest
Dependency	...	...
Child dependency ratio	33	33
Old age dependency ratio	5	5
Total dependency ratio	38	38

	Earliest	Latest
Maternal health	...	...
Adolescent fertility rate	11	4
Total fertility rate	2	2
Maternal mortality ratio	...	...
Contraceptive use, any method (%)	38	35
Condom use (%)	...	...
Births attended by skilled health personnel (%)	100	99
Antenatal care coverage, At least one time (%)	...	...
Antenatal care coverage, At least four times (%)	...	...

	Earliest		Latest	
	Women	Men	Women	Men
Inequality	...	...	...	...
Youth not in education, employment or training (%)	...	...	...	...

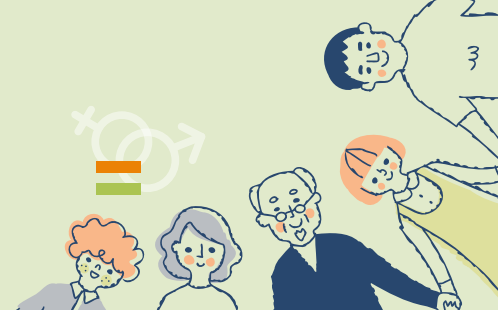
	Earliest		Latest	
	Women	Men	Women	Men
Literacy	...	...	...	...
Youth illiteracy rate (%)	...	...	0.5	1
Adult illiteracy rate (%)	...	...	6	3

	Earliest		Latest	
	Women	Men	Women	Men
Work	...	...	...	...
Youth employment to population ratio (%)	5	23	7	24
Adult employment to population ratio (%)	17	80	79	96

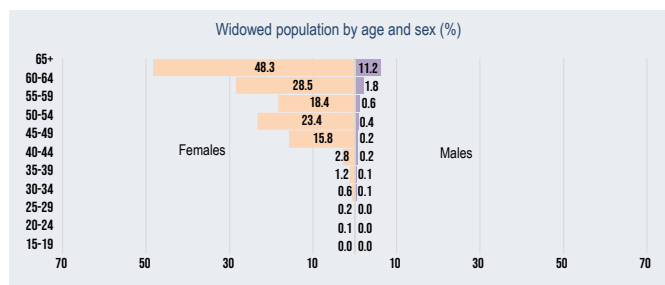




# Al Madinah



	Latest
Total population (number)	2239923
Total population (%)	7
Sex ratio (males per 100 females)	128
Female early marriage before age 18 (%)	...



	Earliest		Latest	
	Women	Men	Women	Men
Population	...	...	...	...
Life expectancy at birth (years)	...	...	...	...
Population below 15 years (%)	30	23	30	23
Population aged 15-64 years (%)	66	73	66	73
Population aged 65+ (%)	4	4	4	4

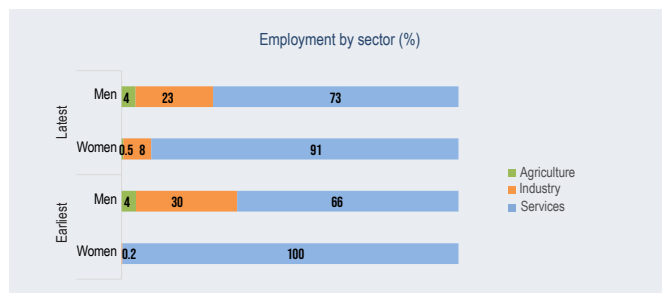
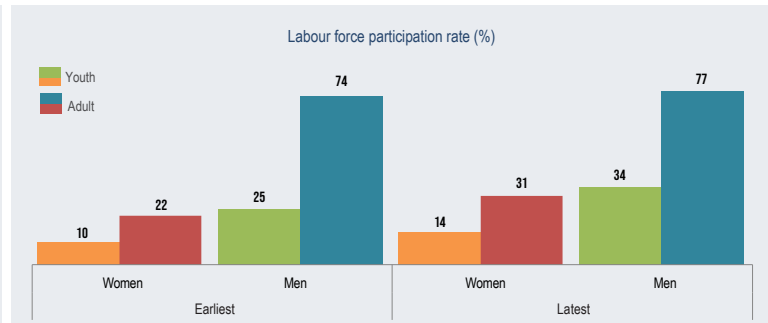
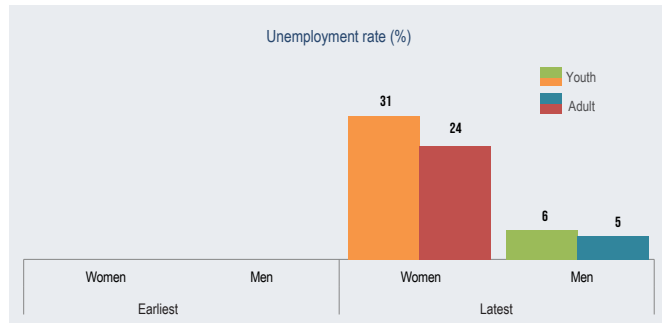
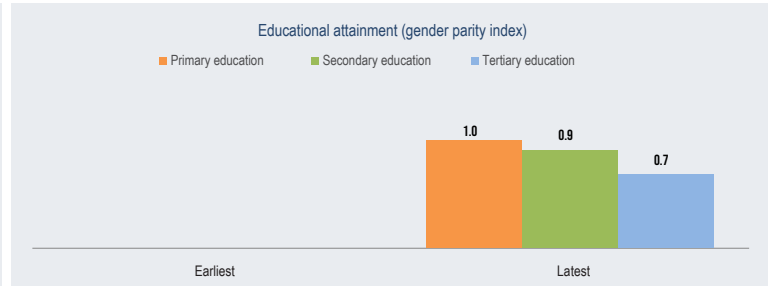
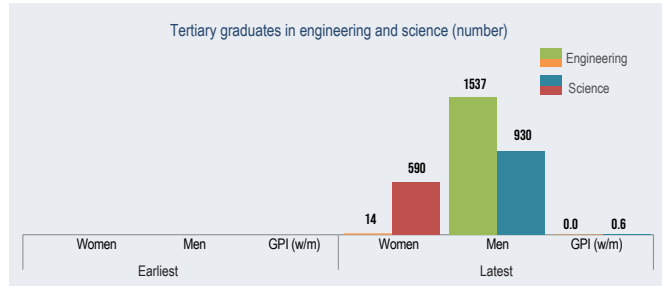
	Earliest	Latest
Dependency	...	...
Child dependency ratio	38	37
Old age dependency ratio	6	6
Total dependency ratio	44	43

	Earliest	Latest
Maternal health	...	...
Adolescent fertility rate	12	14
Total fertility rate	2	2
Maternal mortality ratio	...	...
Contraceptive use, any method (%)	14	20
Condom use (%)	...	...
Births attended by skilled health personnel (%)	100	99
Antenatal care coverage, At least one time (%)	...	...
Antenatal care coverage, At least four times (%)	...	...

	Earliest		Latest	
	Women	Men	Women	Men
Inequality	...	...	...	...
Youth not in education, employment or training (%)	...	...	...	...

	Earliest		Latest	
	Women	Men	Women	Men
Literacy	...	...	...	...
Youth illiteracy rate (%)	...	...	0.4	1
Adult illiteracy rate (%)	...	...	7	3

	Earliest		Latest	
	Women	Men	Women	Men
Work	...	...	...	...
Youth employment to population ratio (%)	3	17	5	22
Adult employment to population ratio (%)	15	71	76	95



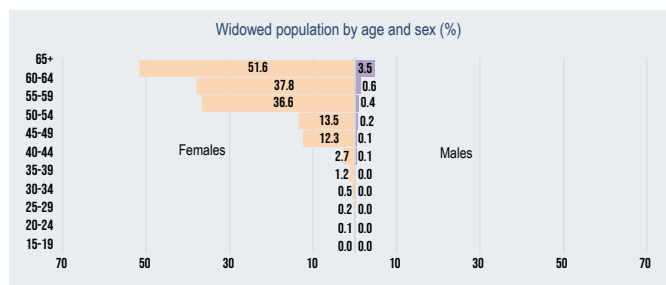




## Al-Qassim



	Latest
Total population (number)	1488285
Total population (%)	4
Sex ratio (males per 100 females)	138
Female early marriage before age 18 (%)	...



	Earliest		Latest	
	Women	Men	Women	Men
Population	...	...	...	...
Life expectancy at birth (years)	...	...	...	...
Population below 15 years (%)	29	22	29	21
Population aged 15-64 years (%)	67	75	68	76
Population aged 65+ (%)	4	3	4	3

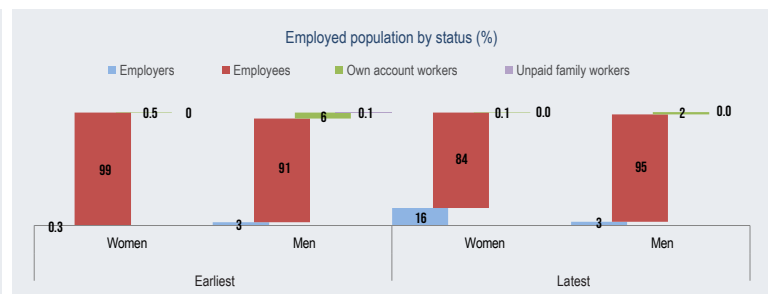
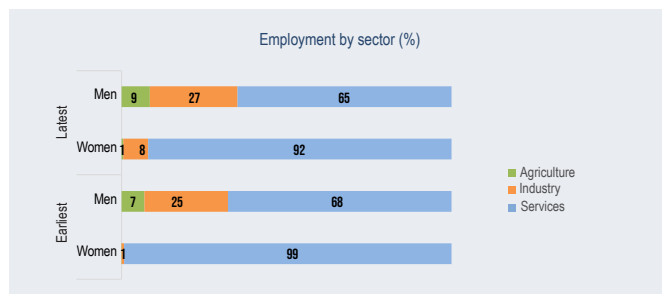
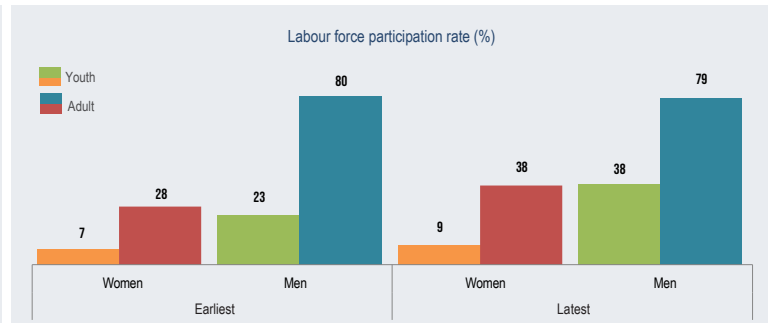
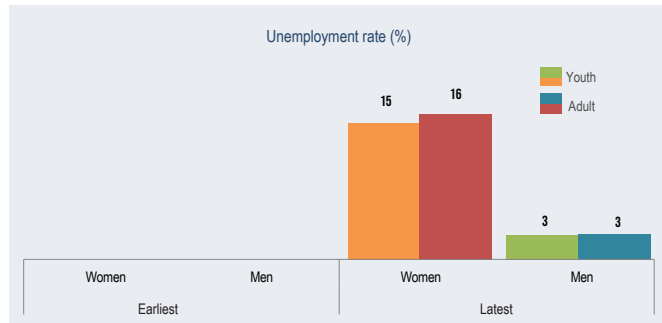
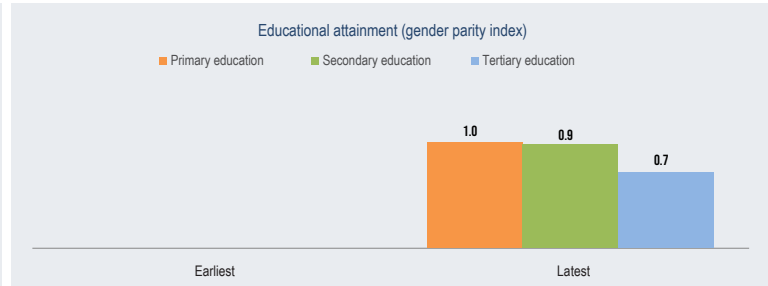
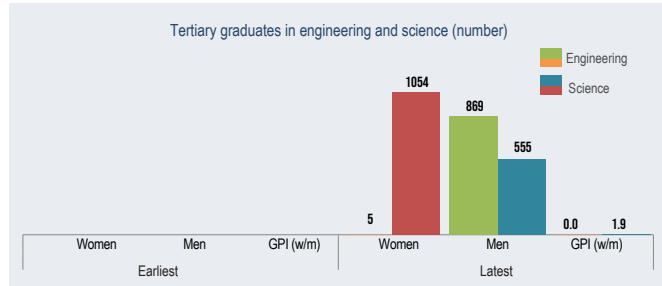
	Earliest	Latest
Dependency		
Child dependency ratio	36	35
Old age dependency ratio	5	4
Total dependency ratio	40	39

	Earliest	Latest
Maternal health		
Adolescent fertility rate	3	12
Total fertility rate	2	2
Maternal mortality ratio	...	...
Contraceptive use, any method (%)	51	34
Condom use (%)	...	...
Births attended by skilled health personnel (%)	100	99
Antenatal care coverage, At least one time (%)	...	...
Antenatal care coverage, At least four times (%)	...	...

	Earliest		Latest	
	Women	Men	Women	Men
Inequality				
Youth not in education, employment or training (%)	...	...	...	...

	Earliest		Latest	
	Women	Men	Women	Men
Literacy				
Youth illiteracy rate (%)	...	...	0.5	1
Adult illiteracy rate (%)	...	...	6	3

	Earliest		Latest	
	Women	Men	Women	Men
Work				
Youth employment to population ratio (%)	3	18	5	33
Adult employment to population ratio (%)	23	78	84	97

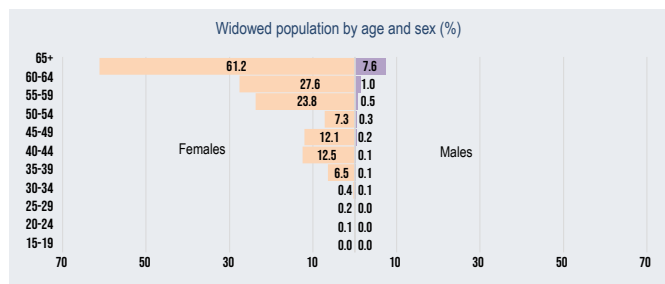




## Eastern Province



	Latest
Total population (number)	5148598
Total population (%)	15
Sex ratio (males per 100 females)	152
Female early marriage before age 18 (%)	...



	Earliest		Latest	
	Women	Men	Women	Men
Population	...	...	...	...
Life expectancy at birth (years)	...	...	...	...
Population below 15 years (%)	29	21	28	20
Population aged 15-64 years (%)	69	77	69	78
Population aged 65+ (%)	3	2	3	2

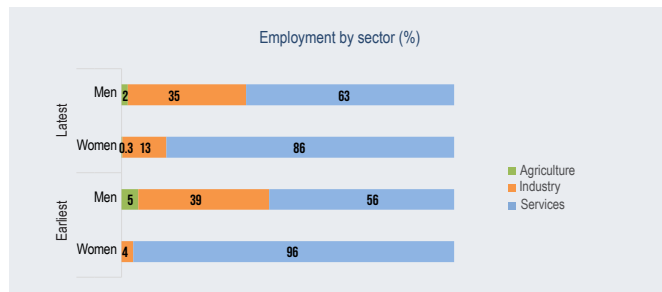
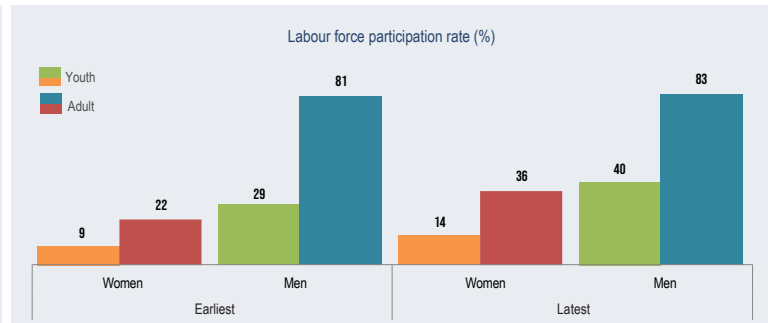
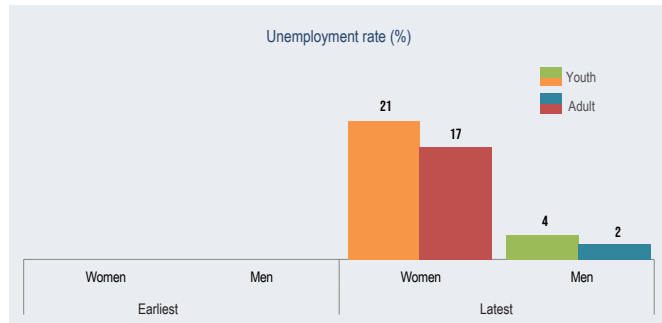
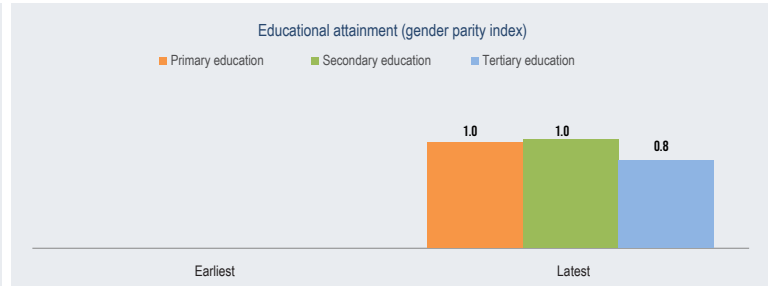
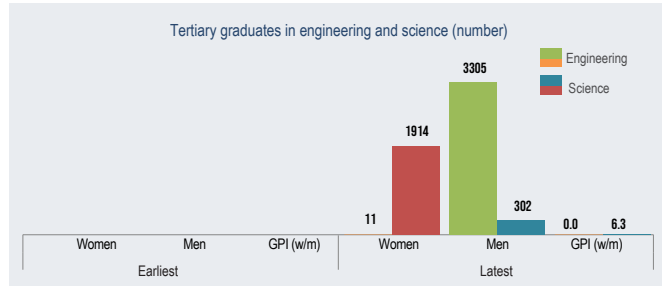
	Earliest	Latest
Dependency		
Child dependency ratio	34	33
Old age dependency ratio	3	3
Total dependency ratio	38	37

	Earliest	Latest
Maternal health		
Adolescent fertility rate	23	11
Total fertility rate	2	2
Maternal mortality ratio	...	...
Contraceptive use, any method (%)	27	34
Condom use (%)	...	...
Births attended by skilled health personnel (%)	100	100
Antenatal care coverage, At least one time (%)	...	...
Antenatal care coverage, At least four times (%)	...	...

	Earliest		Latest	
	Women	Men	Women	Men
Inequality	...	...	...	...
Youth not in education, employment or training (%)	...	...	...	...

	Earliest		Latest	
	Women	Men	Women	Men
Literacy				
Youth illiteracy rate (%)	...	...	1	1
Adult illiteracy rate (%)	...	...	6	2

	Earliest		Latest	
	Women	Men	Women	Men
Work				
Youth employment to population ratio (%)	4	25	8	32
Adult employment to population ratio (%)	18	80	83	98

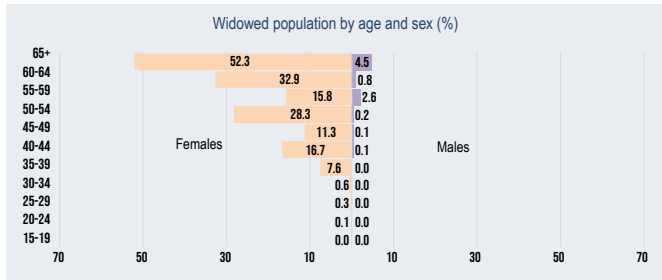




# Asir



Total population (number)	Latest 2308329
Total population (%)	7
Sex ratio (males per 100 females)	122
Female early marriage before age 18 (%)	...



	Earliest		Latest	
	Women	Men	Women	Men
Population	...	...	...	...
Life expectancy at birth (years)	...	...	...	...
Population below 15 years (%)	29	25	28	25
Population aged 15-64 years (%)	66	71	66	71
Population aged 65+ (%)	5	4	5	4

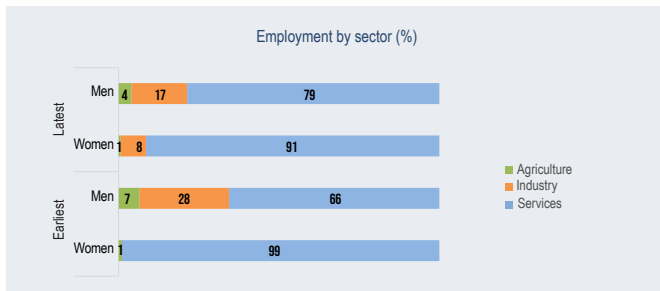
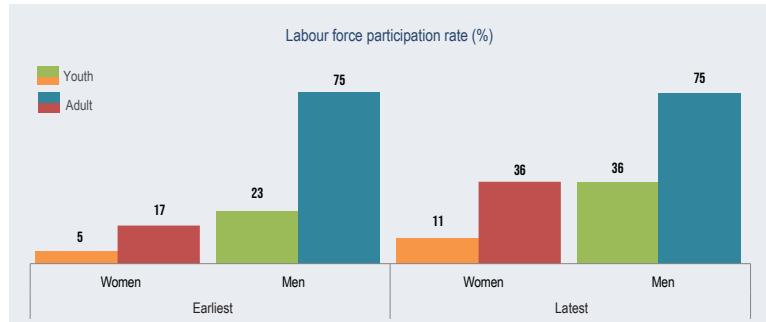
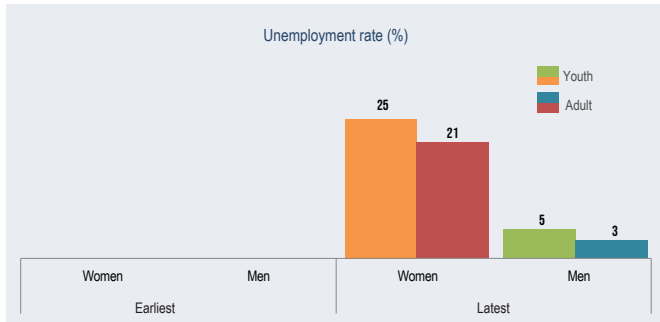
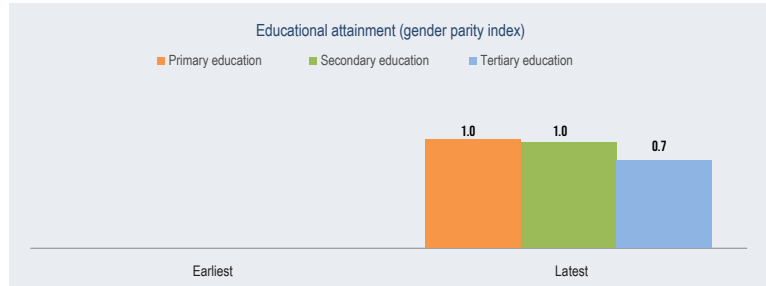
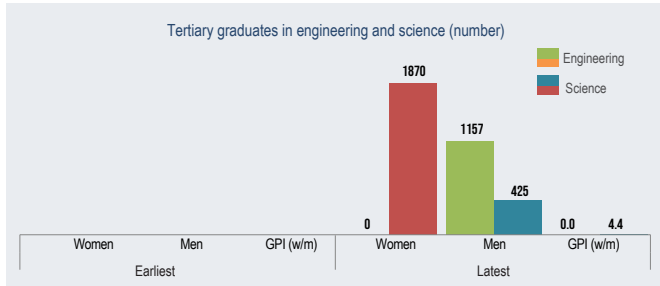
	Earliest	Latest
Dependency		
Child dependency ratio	39	39
Old age dependency ratio	7	7
Total dependency ratio	46	45

	Earliest	Latest
Maternal health		
Adolescent fertility rate	12	14
Total fertility rate	2	2
Maternal mortality ratio	...	...
Contraceptive use, any method (%)	21	25
Condom use (%)	...	...
Births attended by skilled health personnel (%)	99	99
Antenatal care coverage, At least one time (%)	...	...
Antenatal care coverage, At least four times (%)	...	...

	Earliest		Latest	
	Women	Men	Women	Men
Inequality				
Youth not in education, employment or training (%)	...	...	...	...

	Earliest		Latest	
	Women	Men	Women	Men
Literacy				
Youth illiteracy rate (%)	...	...	1	1
Adult illiteracy rate (%)	...	...	8	2

	Earliest		Latest	
	Women	Men	Women	Men
Work				
Youth employment to population ratio (%)	2	18	4	27
Adult employment to population ratio (%)	15	73	79	97

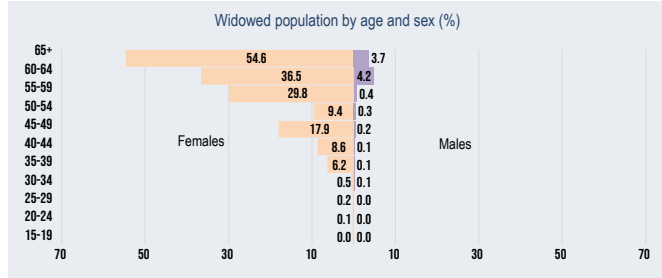




# Tabuk



Total population (number)	Latest
Total population (%)	949612
Sex ratio (males per 100 females)	3
Female early marriage before age 18 (%)	129
	...



	Earliest		Latest	
	Women	Men	Women	Men
Population	...	...	...	...
Life expectancy at birth (years)	...	...	...	...
Population below 15 years (%)	32	26	32	26
Population aged 15-64 years (%)	65	71	65	72
Population aged 65+ (%)	3	2	3	2

	Earliest	Latest
Dependency		
Child dependency ratio	43	42
Old age dependency ratio	4	4
Total dependency ratio	47	46

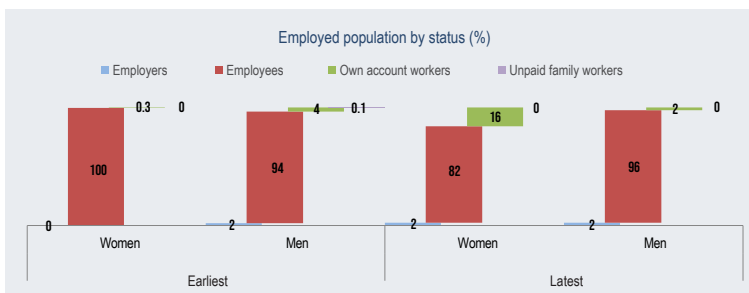
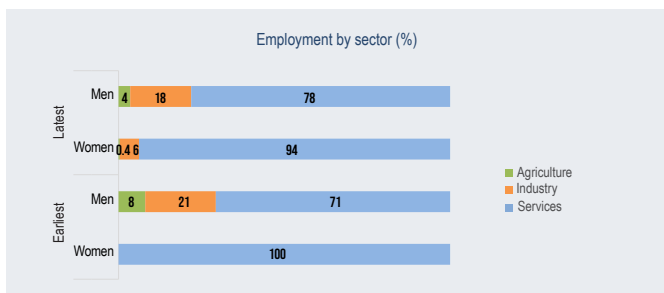
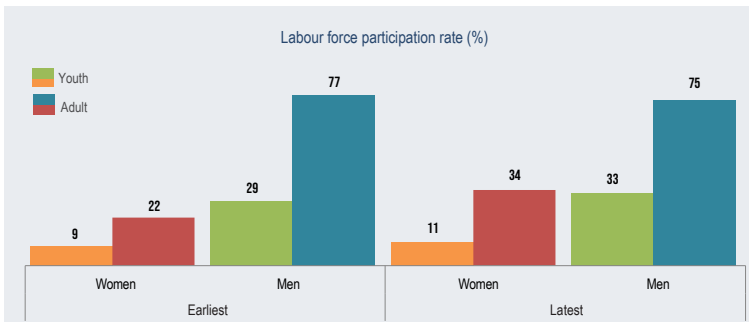
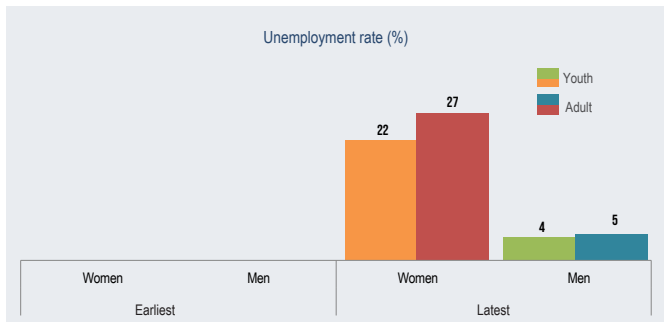
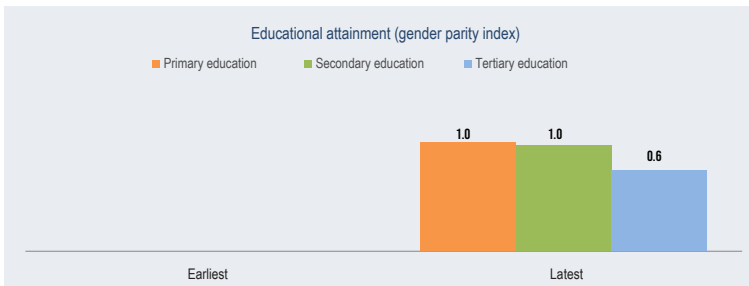
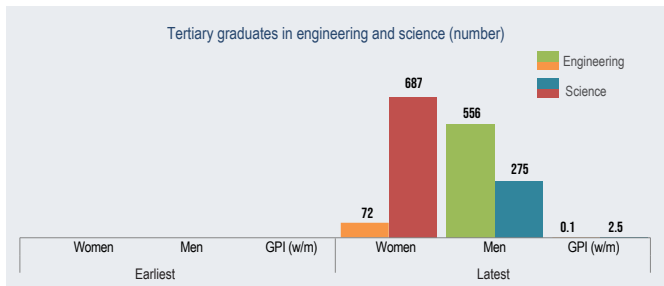
	Earliest	Latest
Maternal health		
Adolescent fertility rate	18	26
Total fertility rate	3	3
Maternal mortality ratio	...	...
Contraceptive use, any method (%)	23	16
Condom use (%)	...	...
Births attended by skilled health personnel (%)	100	99
Antenatal care coverage, At least one time (%)	...	...
Antenatal care coverage, At least four times (%)	...	...



	Earliest		Latest	
	Women	Men	Women	Men
Inequality				
Youth not in education, employment or training (%)	...	...	...	...

	Earliest		Latest	
	Women	Men	Women	Men
Literacy				
Youth illiteracy rate (%)	...	...	1	1
Adult illiteracy rate (%)	...	...	9	3

	Earliest		Latest	
	Women	Men	Women	Men
Work				
Youth employment to population ratio (%)	2	18	4	24
Adult employment to population ratio (%)	13	72	73	95



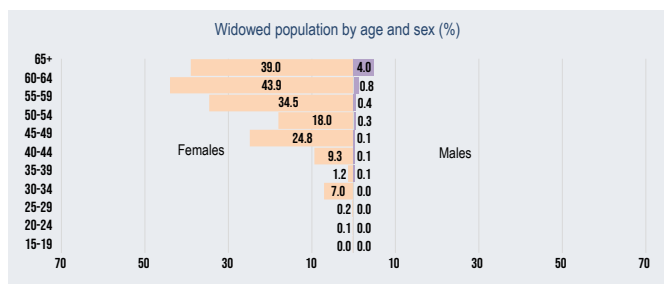




## Ha'il



Total population (number)	731147	Latest
Total population (%)	2	
Sex ratio (males per 100 females)	124	
Female early marriage before age 18 (%)	...	



	Earliest		Latest	
	Women	Men	Women	Men
Population	...	...	...	...
Life expectancy at birth (years)	...	...	...	...
Population below 15 years (%)	28	23	27	23
Population aged 15-64 years (%)	68	73	68	74
Population aged 65+ (%)	4	4	4	4

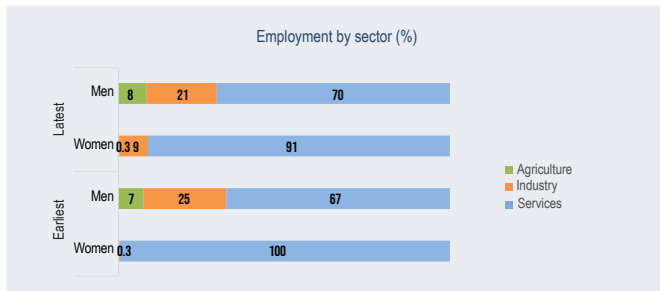
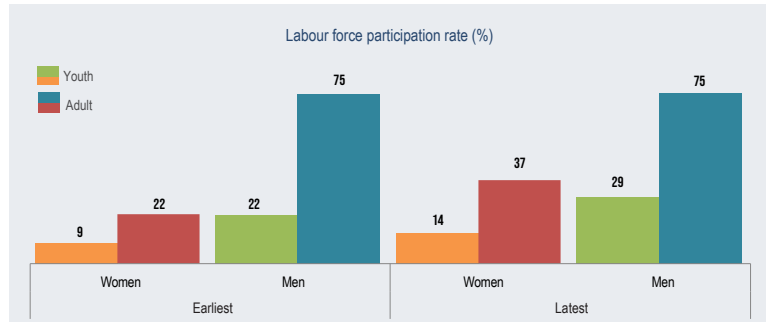
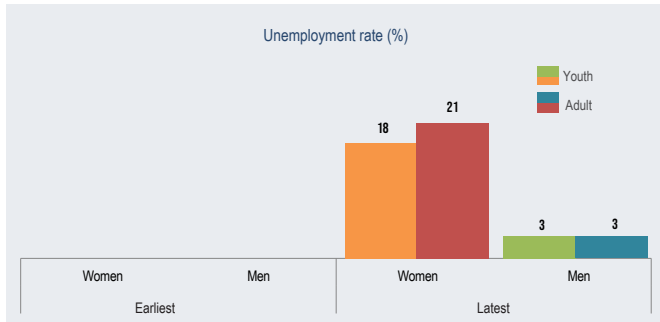
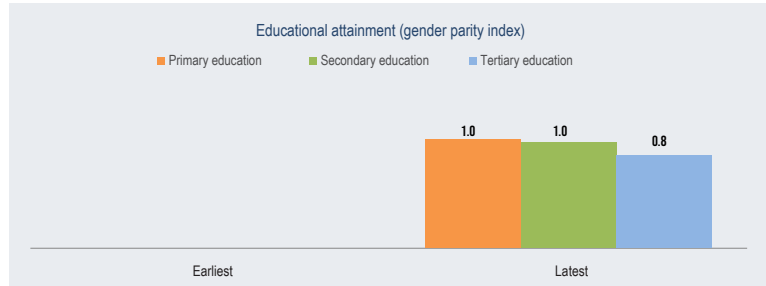
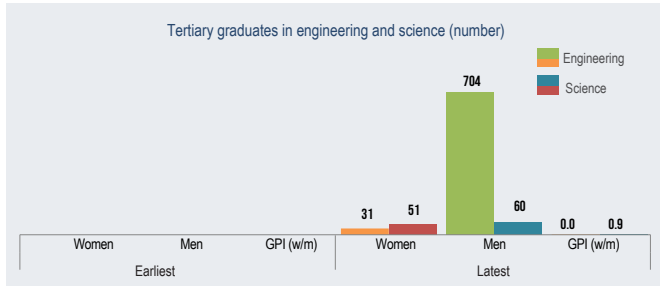
	Earliest	Latest
Dependency		
Child dependency ratio	36	35
Old age dependency ratio	6	5
Total dependency ratio	42	41

	Earliest	Latest
Maternal health		
Adolescent fertility rate	22	4
Total fertility rate	2	2
Maternal mortality ratio	...	...
Contraceptive use, any method (%)	18	30
Condom use (%)	...	...
Births attended by skilled health personnel (%)	100	99
Antenatal care coverage, At least one time (%)	...	...
Antenatal care coverage, At least four times (%)	...	...

	Earliest		Latest	
	Women	Men	Women	Men
Inequality				
Youth not in education, employment or training (%)	...	...	...	...

	Earliest		Latest	
	Women	Men	Women	Men
Literacy				
Youth illiteracy rate (%)	...	...	1	1
Adult illiteracy rate (%)	...	...	12	4

	Earliest		Latest	
	Women	Men	Women	Men
Work				
Youth employment to population ratio (%)	3	15	9	23
Adult employment to population ratio (%)	16	72	79	97

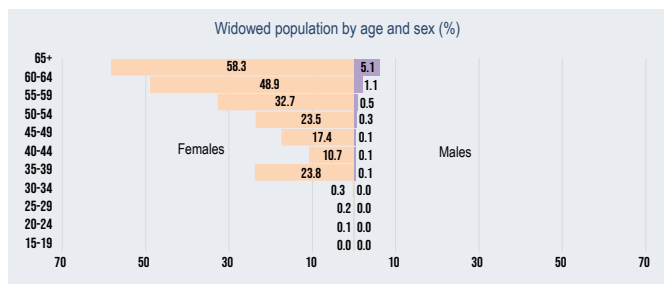




## Northern Borders



	Latest
Total population (number)	383051
Total population (%)	1
Sex ratio (males per 100 females)	123
Female early marriage before age 18 (%)	...



	Earliest		Latest	
	Women	Men	Women	Men
Population	...	...	...	...
Life expectancy at birth (years)	...	...	...	...
Population below 15 years (%)	30	26	30	26
Population aged 15-64 years (%)	66	71	66	72
Population aged 65+ (%)	3	3	3	3

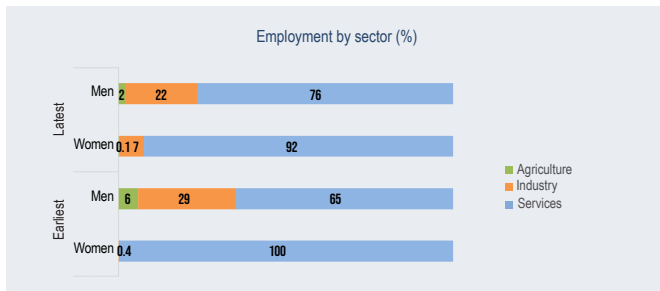
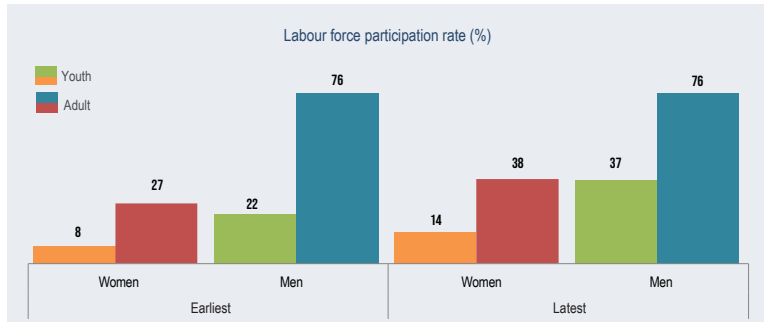
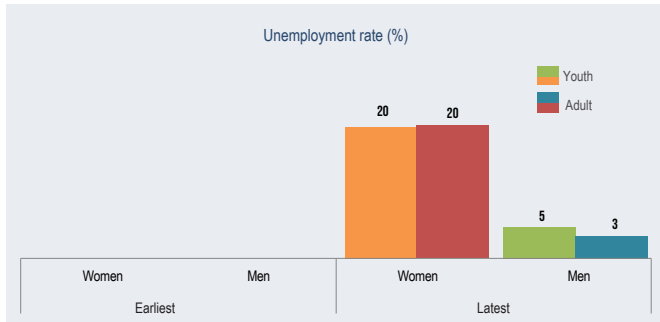
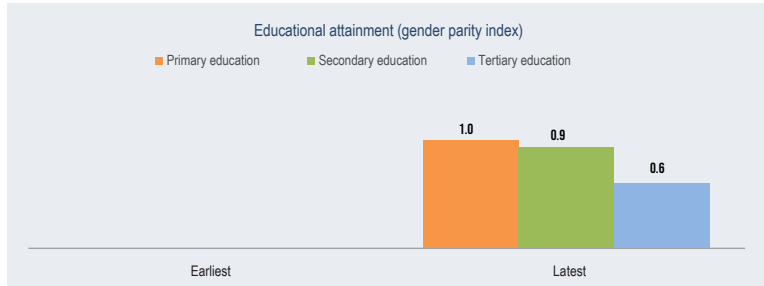
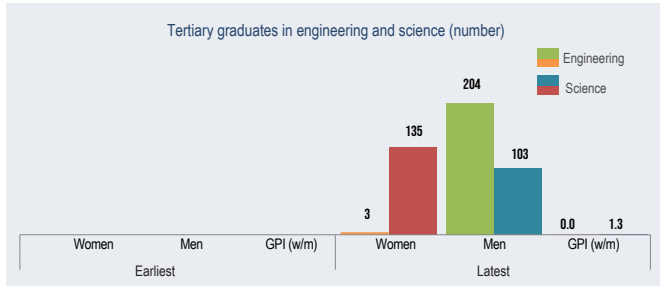
	Earliest	Latest
Dependency		
Child dependency ratio	41	40
Old age dependency ratio	5	4
Total dependency ratio	46	45

	Earliest	Latest
Maternal health		
Adolescent fertility rate	7	17
Total fertility rate	2	2
Maternal mortality ratio	...	...
Contraceptive use, any method (%)	37	23
Condom use (%)	...	...
Births attended by skilled health personnel (%)	100	100
Antenatal care coverage, At least one time (%)	...	...
Antenatal care coverage, At least four times (%)	...	...

	Earliest		Latest	
	Women	Men	Women	Men
Inequality				
Youth not in education, employment or training (%)	...	...	...	...

	Earliest		Latest	
	Women	Men	Women	Men
Literacy				
Youth illiteracy rate (%)	...	...	0.3	1
Adult illiteracy rate (%)	...	...	6	3

	Earliest		Latest	
	Women	Men	Women	Men
Work				
Youth employment to population ratio (%)	2	18	9	29
Adult employment to population ratio (%)	16	73	80	97

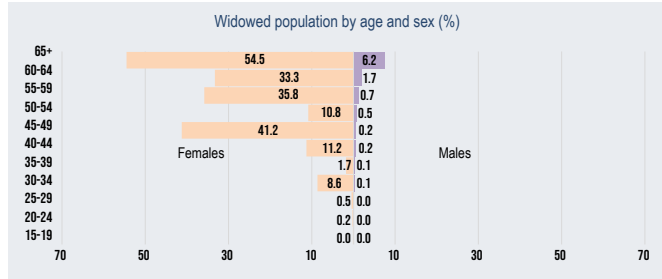




# Jizan



Total population (number)	Latest	1637361
Total population (%)		5
Sex ratio (males per 100 females)		119
Female early marriage before age 18 (%)		...



	Earliest		Latest	
	Women	Men	Women	Men
Population	...	...	...	...
Life expectancy at birth (years)	...	...	...	...
Population below 15 years (%)	29	25	28	25
Population aged 15-64 years (%)	66	70	66	71
Population aged 65+ (%)	5	4	5	4

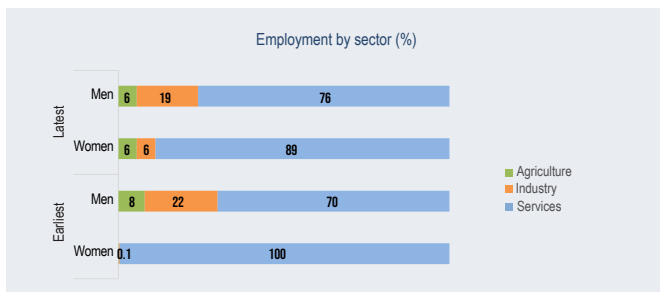
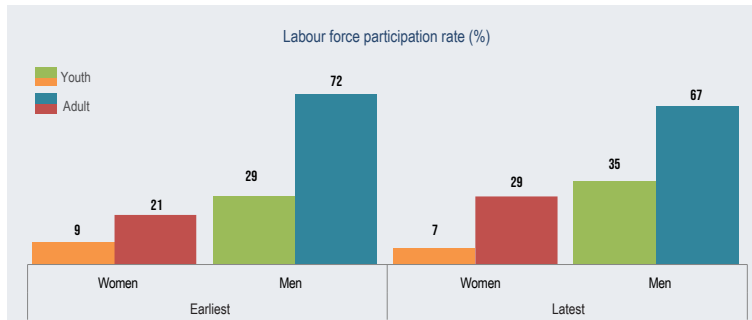
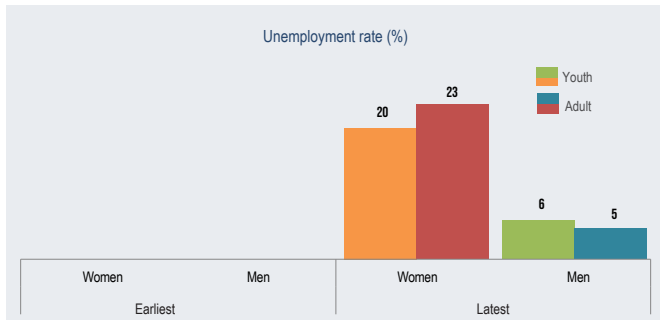
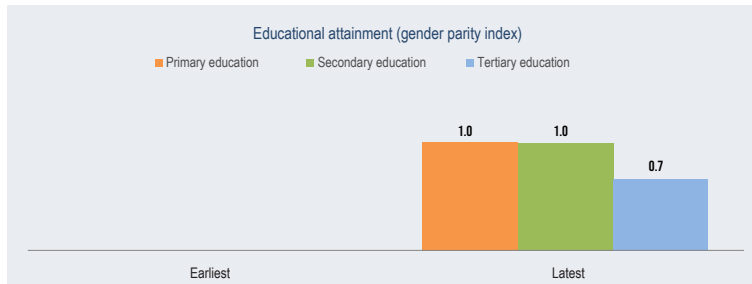
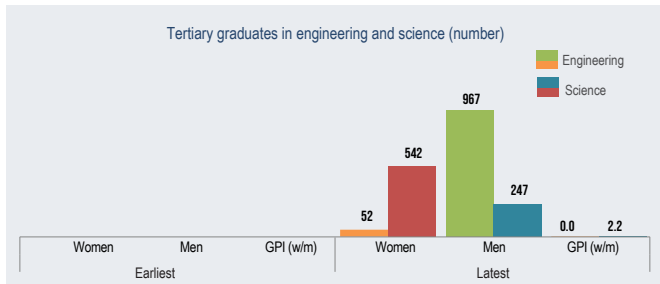
	Earliest	Latest
Dependency		
Child dependency ratio	39	39
Old age dependency ratio	7	7
Total dependency ratio	46	46

	Earliest	Latest
Maternal health		
Adolescent fertility rate	89	18
Total fertility rate	2	2
Maternal mortality ratio	...	...
Contraceptive use, any method (%)	29	36
Condom use (%)	...	...
Births attended by skilled health personnel (%)	97	98
Antenatal care coverage, At least one time (%)	...	...
Antenatal care coverage, At least four times (%)	...	...

	Earliest		Latest	
	Women	Men	Women	Men
Inequality	...	...	...	...
Youth not in education, employment or training (%)	...	...	...	...

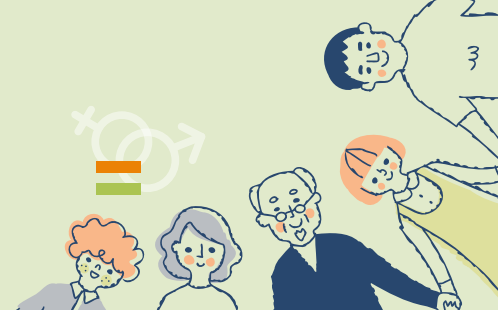
	Earliest		Latest	
	Women	Men	Women	Men
Literacy	...	...	...	...
Youth illiteracy rate (%)	...	...	2	0.5
Adult illiteracy rate (%)	...	...	18	7

	Earliest		Latest	
	Women	Men	Women	Men
Work	...	...	...	...
Youth employment to population ratio (%)	2	20	4	26
Adult employment to population ratio (%)	12	67	77	95

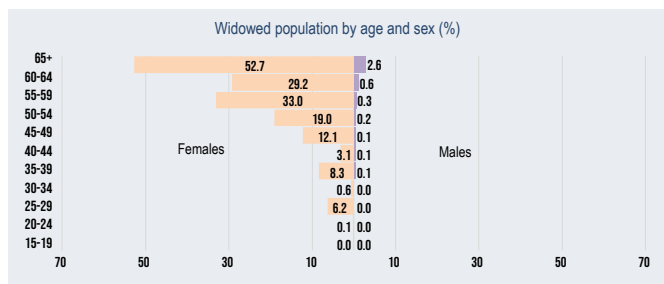




## Najran



Total population (number)	Latest 608467
Total population (%)	2
Sex ratio (males per 100 females)	125
Female early marriage before age 18 (%)	...



	Earliest		Latest	
	Women	Men	Women	Men
Population	...	...	...	...
Life expectancy at birth (years)	...	...	...	...
Population below 15 years (%)	32	27	32	26
Population aged 15-64 years (%)	64	70	64	71
Population aged 65+ (%)	4	3	4	3

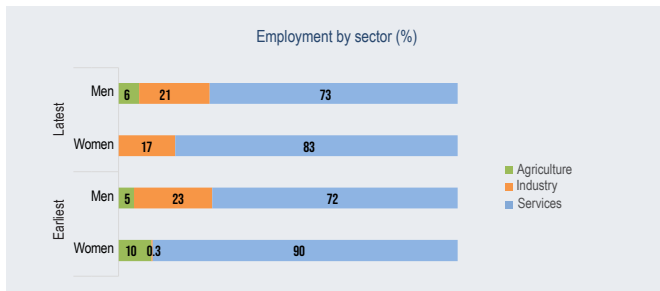
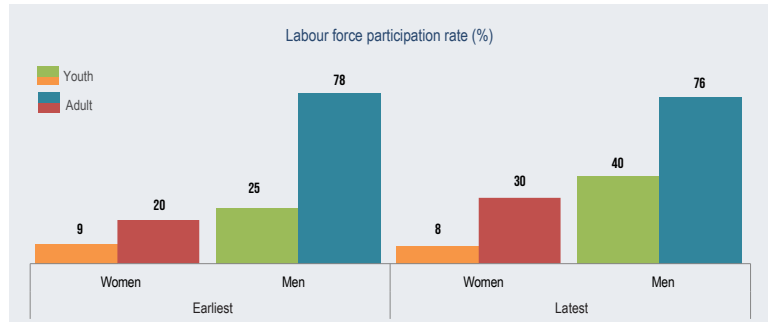
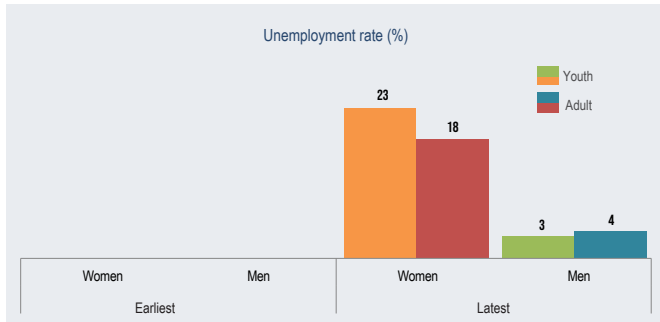
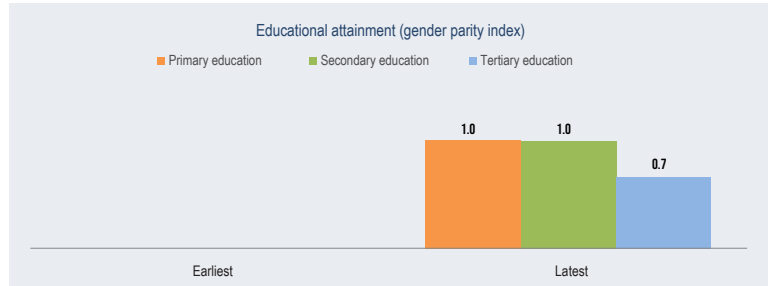
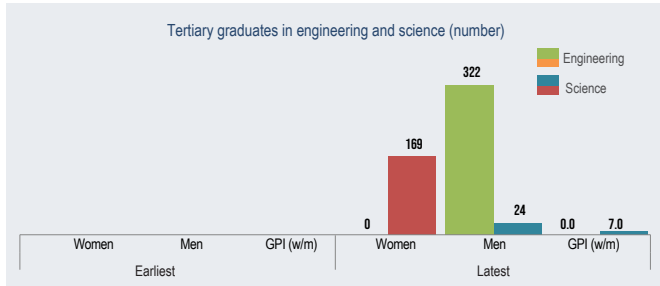
	Earliest	Latest
Dependency		
Child dependency ratio	44	43
Old age dependency ratio	5	5
Total dependency ratio	49	48

	Earliest	Latest
Maternal health		
Adolescent fertility rate	36	31
Total fertility rate	3	3
Maternal mortality ratio	...	...
Contraceptive use, any method (%)	15	21
Condom use (%)	...	...
Births attended by skilled health personnel (%)	100	99
Antenatal care coverage, At least one time (%)	...	...
Antenatal care coverage, At least four times (%)	...	...

	Earliest		Latest	
	Women	Men	Women	Men
Inequality				
Youth not in education, employment or training (%)	...	...	...	...

	Earliest		Latest	
	Women	Men	Women	Men
Literacy				
Youth illiteracy rate (%)	...	...	1	1
Adult illiteracy rate (%)	...	...	14	6

	Earliest		Latest	
	Women	Men	Women	Men
Work				
Youth employment to population ratio (%)	3	21	4	35
Adult employment to population ratio (%)	16	76	82	96



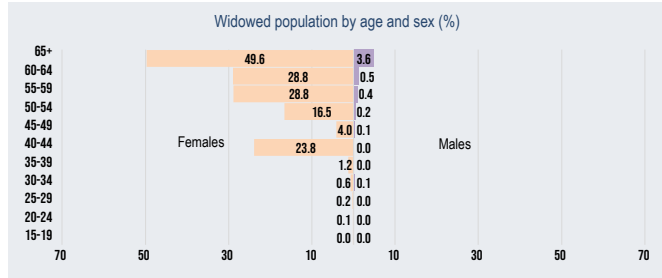




## Al Bahah



	Latest
Total population (number)	497068
Total population (%)	1
Sex ratio (males per 100 females)	116
Female early marriage before age 18 (%)	...



	Earliest		Latest	
	Women	Men	Women	Men
Population	...	...	...	...
Life expectancy at birth (years)	...	...	...	...
Population below 15 years (%)	24	22	24	21
Population aged 15-64 years (%)	69	73	69	74
Population aged 65+ (%)	7	5	7	4

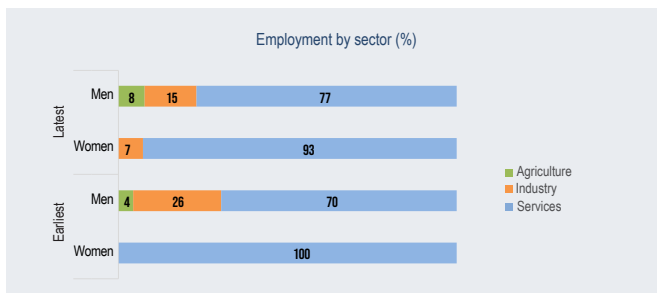
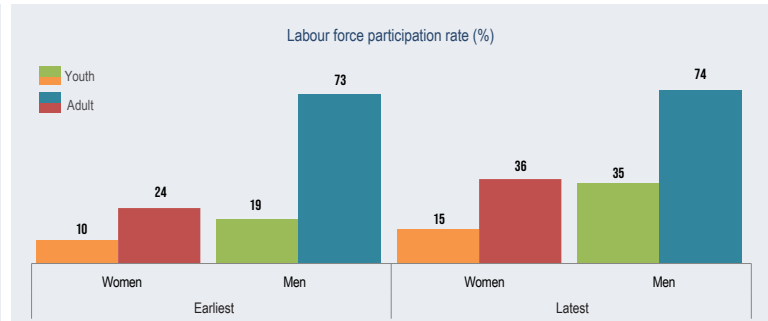
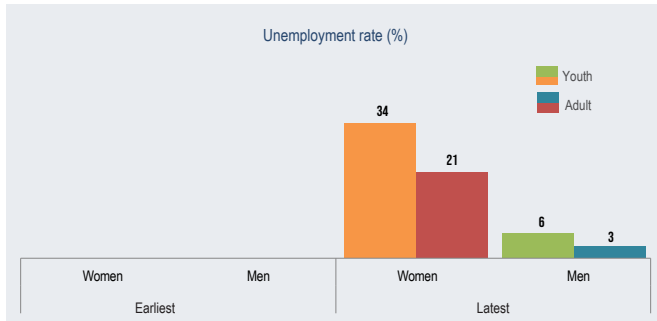
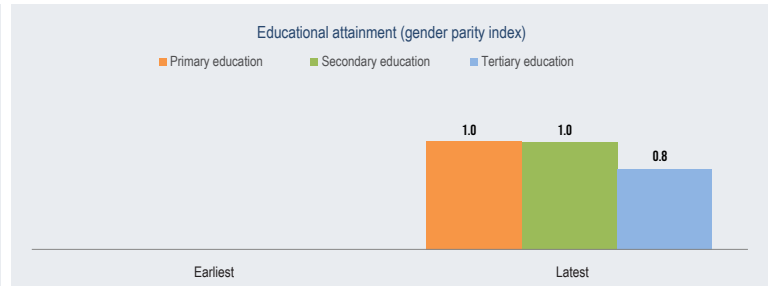
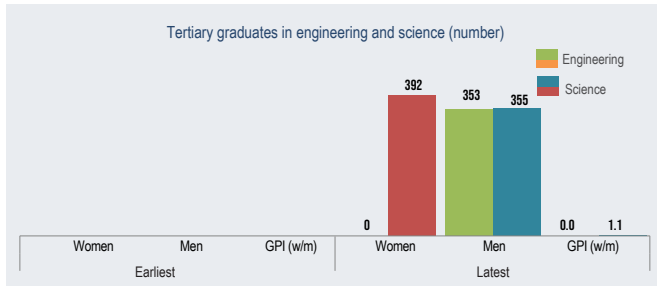
	Earliest	Latest
Dependency		
Child dependency ratio	32	32
Old age dependency ratio	8	8
Total dependency ratio	40	39

	Earliest	Latest
Maternal health		
Adolescent fertility rate	66	8
Total fertility rate	2	2
Maternal mortality ratio	...	...
Contraceptive use, any method (%)	26	25
Condom use (%)	...	...
Births attended by skilled health personnel (%)	100	100
Antenatal care coverage, At least one time (%)	...	...
Antenatal care coverage, At least four times (%)	...	...

	Earliest		Latest	
	Women	Men	Women	Men
Inequality	...	...	...	...
Youth not in education, employment or training (%)	...	...	...	...

	Earliest		Latest	
	Women	Men	Women	Men
Literacy				
Youth illiteracy rate (%)	...	...	1	0.4
Adult illiteracy rate (%)	...	...	14	4

	Earliest		Latest	
	Women	Men	Women	Men
Work				
Youth employment to population ratio (%)	2	13	5	24
Adult employment to population ratio (%)	15	70	79	97

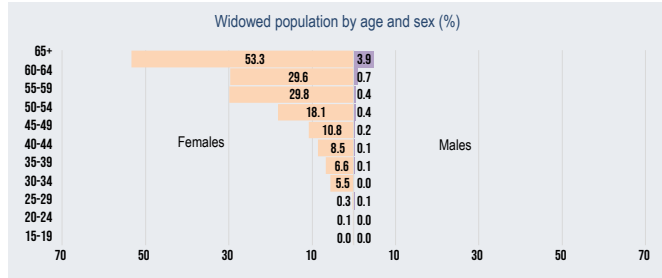




# Al Jawf



Total population (number)	Latest
Total population (%)	531952
Sex ratio (males per 100 females)	2
Female early marriage before age 18 (%)	133
	...



	Earliest		Latest	
	Women	Men	Women	Men
Population	...	...	...	...
Life expectancy at birth (years)	34	26	34	26
Population below 15 years (%)	63	71	63	72
Population aged 15-64 years (%)	3	3	3	3
Population aged 65+ (%)				

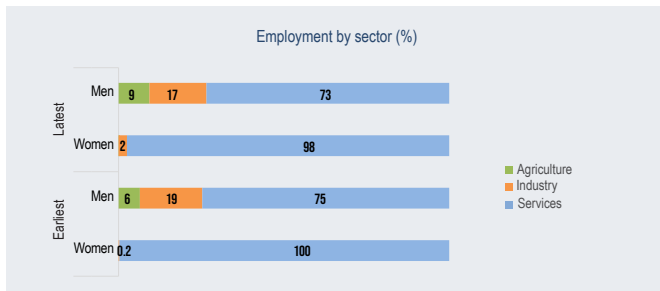
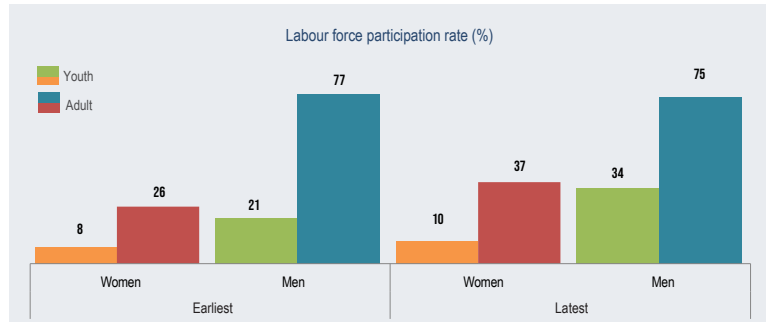
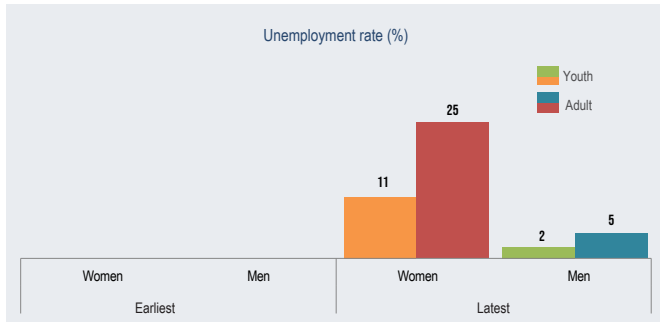
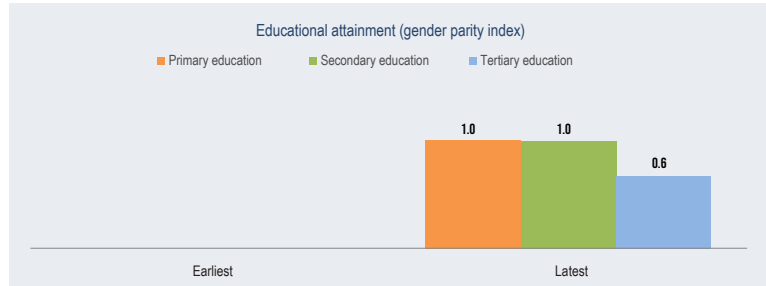
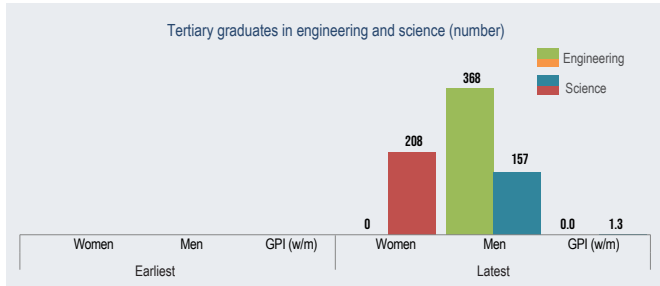
	Earliest	Latest
Dependency		
Child dependency ratio	45	44
Old age dependency ratio	4	4
Total dependency ratio	49	48

	Earliest	Latest
Maternal health		
Adolescent fertility rate	36	14
Total fertility rate	3	2
Maternal mortality ratio	...	...
Contraceptive use, any method (%)	21	17
Condom use (%)	...	...
Births attended by skilled health personnel (%)	100	100
Antenatal care coverage, At least one time (%)	...	...
Antenatal care coverage, At least four times (%)	...	...

	Earliest		Latest	
	Women	Men	Women	Men
Inequality	...	...	...	...
Youth not in education, employment or training (%)	...	...	...	...

	Earliest		Latest	
	Women	Men	Women	Men
Literacy	...	...	...	...
Youth illiteracy rate (%)	...	...	1	2
Adult illiteracy rate (%)	...	...	8	6

	Earliest		Latest	
	Women	Men	Women	Men
Work	...	...	...	...
Youth employment to population ratio (%)	2	16	8	30
Adult employment to population ratio (%)	19	75	75	95



## o Definitions



Governorates or cities information	
<b>Sex ratio (males per 100 females)</b>	Sex ratio is the demographic concept that measures the proportion of males to females in a given population. It is usually measured as the number of males per 100 females.
<b>Female early marriage before age 18 (%)</b>	Proportion of women aged 20-24 years who were married or in a union before age 18.
Population and dependency	
<b>Life expectancy at birth (years)</b>	The average number of years that a newborn could expect to live, if he or she were to pass through life exposed to the sex- and age-specific death rates prevailing at the time of his or her birth, for a specific year, in a given country, territory or geographic area.
<b>Population below 15 years (%)</b>	Percentage of the population in the country or area below age 15, calculated separately for each sex.
<b>Population aged 15-64 years (%)</b>	Percentage of the population in the country or area aged 15-64 years, calculated separately for each sex.
<b>Population aged 65+ (%)</b>	Percentage of the population in the country or area aged 65 and above, calculated separately for each sex.

<b>Child dependency ratio</b>	Ratio of the population aged 0-14 to the population aged 15-64. Ratio is presented as number of dependants per 100 persons of working age (15-64).
<b>Old-age dependency ratio</b>	Ratio of the population aged 65 years or above to the population aged 15-64. Ratio is presented as number of dependants per 100 persons of working age (15-64).
<b>Total dependency ratio</b>	Ratio of the combined child population (0-14) and old-age population (65 and above) to the working-age population (15-64). It is expressed as the number of dependents for every 100 workers.
<b>Widowed population by age and sex (%)</b>	Widowed indicates people whose last marriage ended with the death of their spouse and they had not remarried distributed by age group in percentage. The married widow survivor is counted out of all married with alive spouses in each age group for each sex. The total for each sex should not be 100 per cent.
<b>Maternal health</b>	
<b>Adolescent fertility (15-19 years)</b>	Adolescent birth rate measures the annual number of births to women aged 15-19 years per 1,000 women in that age group. It represents the risk of childbearing among adolescent women aged 15-19. It is also referred to as the age-specific fertility rate for women aged 15-19. Adolescent birth rate is generally computed as a ratio. The numerator is the number of live births to women aged 15-19, and the denominator an estimate of exposure to childbearing by women aged 15-19. The numerator and the denominator are calculated differently for civil registration, survey and census data.
<b>Total fertility rate</b>	Average number of live births a woman would have by age 50 if she were subject, throughout her life, to the age-specific fertility rates observed in a given year. Its calculation assumes that there is no mortality. It is expressed as children per woman.

<b>Maternal mortality ratio</b>	Maternal Mortality Ratio (MMR) is the annual number of female deaths from any cause related to or aggravated by pregnancy or its management (excluding accidental or incidental causes) during pregnancy and childbirth or within 42 days of termination of pregnancy, irrespective of the duration and site of the pregnancy, for a specified year (expressed per 100,000 live births).
<b>Contraceptive use, any method (%)</b>	Contraceptive prevalence rate is the proportion of women of reproductive age who are using (or whose partner is using) a contraceptive method at a given point in time.
<b>Condom use (%)</b>	
<b>Births attended by skilled health personnel (%)</b>	Percentage of births attended by skilled health personnel (doctors, nurses or midwives).
<b>Antenatal care coverage, at least one time (%)</b>	Percentage of women aged 15-49 with a live birth in a given time period that received antenatal care provided by skilled health personnel at least once during their pregnancy.
<b>Antenatal care coverage, at least four times (%)</b>	Percentage of women aged 15-49 with a live birth in a given time period that received antenatal care by any provider four or more times during their pregnancy.
<b>Inequality</b>	
<b>Youth not in education, employment or training (%)</b>	This indicator conveys the proportion of youth (aged 15-24) not in education, employment or training (also known as "the youth NEET rate"). (Unemployed youth + Youth outside the labour force) - (Unemployment youth in education or training + Youth outside the labour force in education or training)/Youth population *100.
<b>Youth illiteracy rate (%)</b>	Percentage of the youth aged 15-24 which cannot both read and write with understanding over total population in the same age class.

<b>Adult illiteracy rate (%)</b>	Percentage of the population aged 15 and above which cannot both read and write with understanding over total population in the same age class.
<b>Youth unemployment rate (%)</b>	Number of unemployed youth people divided by the total youth labour multiplied by 100.
<b>Adult unemployment rate (%)</b>	Number of unemployed people divided by the total labour multiplied by 100.
<b>Education</b>	
<b>Gender Parity Index in education</b>	Gender Parity Index (GPI) reflects females' level of access to education compared to that of males. This is calculated for each school phase. ESCWA calculates GPI as the ratio of girls to boys.
<b>Tertiary graduates in engineering (number)</b>	Engineering, manufacturing and construction: include engineering and engineering trades, manufacturing and production process, architecture and building according to ISCED 5A.
<b>Tertiary graduates in science (number)</b>	Science include: life sciences, physical sciences, mathematics and statistics according to ISCED 5B.
<b>Work</b>	
<b>Youth labour force participation rate (%)</b>	$\text{Employed youth} + \text{Unemployed youth} / \text{Total youth population} * 100.$
<b>Adult labour force participation rate (%)</b>	Labour force participation rate is a measure of the proportion of a country's working-age population that engages actively in the labour market, either by working or looking for work. It provides an indication of the relative size of the supply of labour available to engage in the production of goods and services. The labour force participation rate is calculated by expressing the number of persons in the labour force as a percentage of the working-age population.



<b>Youth employment to population ratio (%)</b>	Youth employed/Total youth population * 100.																				
<b>Adult employment to population ratio (%)</b>	Employment-to-population ratio is defined as the proportion of a country's working-age population that is employed. It is calculated by dividing the number of persons in employment as a percentage of the population for the corresponding sex and age group (either working-age or youth). A high ratio means that a large proportion of a country's population is employed, while a low ratio means that a large share of the population is not involved directly in market-related activities, because they are either unemployed or (more likely) out of the labour force altogether.																				
<b>Employment by sector</b>																					
<b>Employment in:</b> <b>- Agriculture (%)</b> <b>- Industry (%)</b> <b>- Services (%)</b>	<p>There are three broad sectors – agriculture, industry and services – each expressing a percentage of total employment. The indicator shows employment growth and decline on a broad sectoral scale, while highlighting differences in trends and levels between developed and developing economies. The agriculture, industry and services sectors are defined by the International Standard Industrial Classification (ISIC) System. The agriculture sector comprises activities in agriculture, hunting, forestry and fishing, in accordance with major division 1 of ISIC 2, categories A and B of ISIC 3 and category A of ISIC 4. The industry sector comprises mining and quarrying, manufacturing, construction and public utilities (electricity, gas and water), in accordance with major divisions 2 to 5 of ISIC 2, categories C to F of ISIC 3 or categories B to F of ISIC 4. The services sector consists of wholesale and retail trade, restaurants and hotels, transport, storage and communications, finance, insurance, real estate and business services, and community, social and personal services. This sector corresponds to major divisions 6 to 9 of ISIC 2 or categories G to P of ISIC 3. See the table below for a representation of how the aggregate sectors are calculated according to the different ISIC revisions:</p> <table border="0"> <tr> <td>Aggregate sector</td> <td>-----ISIC 2 major divisions-----</td> <td>ISIC 3 categories-----</td> <td>ISIC 4 categories</td> </tr> <tr> <td>Agriculture</td> <td>----- 1 -----</td> <td>-----A+B-----</td> <td>----- A</td> </tr> <tr> <td>Industry</td> <td>----- 2-5 -----</td> <td>----- C-F -----</td> <td>----- B-F</td> </tr> <tr> <td>Services</td> <td>----- 6-9 -----</td> <td>----- G-Q -----</td> <td>----- G-U</td> </tr> <tr> <td>Sector not adequately defined--</td> <td>0-----</td> <td>X -----</td> <td>n/a</td> </tr> </table>	Aggregate sector	-----ISIC 2 major divisions-----	ISIC 3 categories-----	ISIC 4 categories	Agriculture	----- 1 -----	-----A+B-----	----- A	Industry	----- 2-5 -----	----- C-F -----	----- B-F	Services	----- 6-9 -----	----- G-Q -----	----- G-U	Sector not adequately defined--	0-----	X -----	n/a
Aggregate sector	-----ISIC 2 major divisions-----	ISIC 3 categories-----	ISIC 4 categories																		
Agriculture	----- 1 -----	-----A+B-----	----- A																		
Industry	----- 2-5 -----	----- C-F -----	----- B-F																		
Services	----- 6-9 -----	----- G-Q -----	----- G-U																		
Sector not adequately defined--	0-----	X -----	n/a																		

Employed population by status	
<b>Employers (%)</b>	Employers are those workers who, working on their own account or with one or a few partners, hold the type of jobs defined as a “self-employment jobs” (i.e. jobs where the remuneration is directly dependent upon the profits derived from the goods and services produced), and, in this capacity, have engaged, on a continuous basis, one or more persons to work for them as employee(s).
<b>Employees (%)</b>	Employees are all those workers who hold the type of jobs defined as “paid employment jobs”, where the incumbents hold explicit (written or oral) or implicit employment contracts that give them a basic remuneration that is not directly dependent upon the revenue of the unit for which they work.
<b>Own account workers (%)</b>	Own-account workers are those workers who, working on their own account or with one or more partners, hold the type of jobs defined as a “self-employment jobs”, and have not engaged on a continuous basis any employees to work for them.
<b>Unpaid family workers (%)</b>	Contributing family workers are those workers who hold “self-employment jobs” as own-account workers in a market-oriented establishment operated by a related person living in the same household.

## o Sources



Indicator	Earliest year	Latest year
<b>Total population</b>		2019: GASTAT, Statistical Database, Population estimates by gender and region <a href="https://database.stats.gov.sa/beta/dashboard/indicator/410">https://database.stats.gov.sa/beta/dashboard/indicator/410</a>
<b>Sex ratio</b>		2019: GASTAT, Statistical Yearbook 2019 (Calculated by ESCWA: M/F*100) <a href="https://www.stats.gov.sa/en/1007-0">https://www.stats.gov.sa/en/1007-0</a>
<b>Female early marriage before age 18</b>		
<b>Life expectancy at birth</b>		
<b>Population below 15 years</b>		
<b>Population aged 15-64 years</b>		
<b>Population aged 65+</b>		

<b>Widowed population by age and sex</b>		2010: Calculated by ESCWA from Census 2010 <a href="https://www.stats.gov.sa/en/13">https://www.stats.gov.sa/en/13</a>
<b>Adolescent fertility</b>	2017: GASTAT, Household Health Survey 2017, table 14-5 <a href="https://www.stats.gov.sa/en/965">https://www.stats.gov.sa/en/965</a>	2018: GASTAT, Household Health Survey 2018, table 6-1-1 <a href="https://www.stats.gov.sa/en/965a">https://www.stats.gov.sa/en/965a</a>
<b>Total fertility rate</b>	2017: GASTAT, Household Health Survey 2017, table 14-5 <a href="https://www.stats.gov.sa/en/965">https://www.stats.gov.sa/en/965</a>	2018: GASTAT, Household Health Survey 2018, table 6-1-1 <a href="https://www.stats.gov.sa/en/965">https://www.stats.gov.sa/en/965</a>
<b>Maternal mortality ratio</b>		
<b>Contraceptive use, any method</b>	2017: GASTAT, Household Health Survey 2017, table 13-2 <a href="https://www.stats.gov.sa/en/965">https://www.stats.gov.sa/en/965</a>	2018: GASTAT, Household Health Survey 2018, table 6-2-1 <a href="https://www.stats.gov.sa/en/965">https://www.stats.gov.sa/en/965</a>
<b>Condom use</b>		
<b>Births attended by skilled health personnel</b>	2017: GASTAT, Household Health Survey 2017, table 14-3 <a href="https://www.stats.gov.sa/en/965">https://www.stats.gov.sa/en/965</a>	2018: GASTAT, Household Health Survey 2018, table 6-5-1 <a href="https://www.stats.gov.sa/en/965">https://www.stats.gov.sa/en/965</a>
<b>Antenatal care coverage, at least one time</b>		
<b>Antenatal care coverage, at least four times</b>		

<b>Youth not in education, employment or training</b>	
<b>Youth illiteracy rate</b>	2017: GASTAT, Education and Training Survey 2017 <a href="https://www.stats.gov.sa/en/903">https://www.stats.gov.sa/en/903</a>
<b>Adult illiteracy rate</b>	2017: GASTAT, Education and Training Survey 2017 <a href="https://www.stats.gov.sa/en/903">https://www.stats.gov.sa/en/903</a>
<b>Youth unemployment rate</b>	2020: GASTAT, Labour Force Survey 2020 (Q4)
<b>Adult unemployment rate</b>	2021: GASTAT, Labour Force Survey 2021 (Q4), table 2-4 <a href="https://www.stats.gov.sa/en/814">https://www.stats.gov.sa/en/814</a>
<b>Gender Parity Index, primary education</b>	2017: GASTAT, Education and Training Survey 2017 <a href="https://www.stats.gov.sa/en/903">https://www.stats.gov.sa/en/903</a>
<b>Gender Parity Index, secondary education</b>	2017: GASTAT, Education and Training Survey 2017 <a href="https://www.stats.gov.sa/en/903">https://www.stats.gov.sa/en/903</a>
<b>Gender Parity Index, tertiary education</b>	2017: GASTAT, Education and Training Survey 2017 <a href="https://www.stats.gov.sa/en/903">https://www.stats.gov.sa/en/903</a>

<b>Tertiary graduates in engineering</b>	2018: Ministry of Education (data set) <a href="https://data.gov.sa/Data/en/dataset?q=graduate&amp;organization=ministry_of_education&amp;sort=metadata_modified+desc">https://data.gov.sa/Data/en/dataset?q=graduate&amp;organization=ministry_of_education&amp;sort=metadata_modified+desc</a>
<b>Tertiary graduates in science</b>	2018: Ministry of Education (data set) <a href="https://data.gov.sa/Data/en/dataset?q=graduate&amp;organization=ministry_of_education&amp;sort=metadata_modified+desc">https://data.gov.sa/Data/en/dataset?q=graduate&amp;organization=ministry_of_education&amp;sort=metadata_modified+desc</a>
<b>Youth labour force participation rate</b>	2020: GASTAT, Labour Force Survey 2020 (Q4)
<b>Adult labour force participation rate</b>	2021: GASTAT, Labour Force Survey 2021 (Q4), table 5-4 <a href="https://www.stats.gov.sa/en/814">https://www.stats.gov.sa/en/814</a>
<b>Youth employment to population ratio</b>	2020: GASTAT, Labour Force Survey 2020 (Q4)
<b>Adult employment to population ratio</b>	2021: GASTAT, Labour Force Survey 2021 (Q4), table 3-4 <a href="https://www.stats.gov.sa/en/814">https://www.stats.gov.sa/en/814</a>
<b>Employment by sector</b>	2020: GASTAT, Labour Force Survey 2020 (Q4)
<b>Employed population by status</b>	2020: GASTAT, Labour Force Survey 2020 (Q4)



23-00056