



Shared Prosperity Dignified Life



Egypt National Gender Lens Pocketbook 2022

© 2023 United Nations
All rights reserved worldwide

Photocopies and reproductions of excerpts are allowed with proper credits.

All queries on rights and licenses, including subsidiary rights, should be addressed to the United Nations Economic and Social Commission for Western Asia (ESCWA), email: publications-escwa@un.org.

The findings, interpretations and conclusions expressed in this publication are those of the authors and do not necessarily reflect the views of the United Nations or its officials or Member States.

The designations employed and the presentation of material in this publication do not imply the expression of any opinion whatsoever on the part of the United Nations concerning the legal status of any country, territory, city or area or of its authorities, or concerning the delimitation of its frontiers or boundaries.

Links contained in this publication are provided for the convenience of the reader and are correct at the time of issue. The United Nations takes no responsibility for the continued accuracy of that information or for the content of any external website.

References have, wherever possible, been verified.

Mention of commercial names and products does not imply the endorsement of the United Nations.

References to dollars (\$) are to United States dollars, unless otherwise stated.

Symbols of United Nations documents are composed of capital letters combined with figures. Mention of such a symbol indicates a reference to a United Nations document.

United Nations publication issued by ESCWA, United Nations House, Riad El Solh Square,

P.O. Box: 11-8575, Beirut, Lebanon.

Website: www.unescwa.org.

o Acknowledgements

The Central Agency for Public Mobilization and Statistics (CAPMAS) in collaboration with the Economic and Social Commission for Western Asia (ESCWA) completed the preparation and production of the "Egypt Gender Lens Pocketbook 2022".

o Introduction

The Egypt Gender Lens Pocketbook 2022 provides a statistical visual portrait of 27 governorates in Egypt country to monitor the progress of 40 selected indicators on key gender issues such as population, education, inequality, health and work.

The Pocketbook illustrates the situation of females compared to males with regard to equality between women and men in a user-friendly format. The national automated pocketbook is developed on excel sheets with graphic visualizations and linked to secondary sheets for data entry and presents progress over a two-year period.

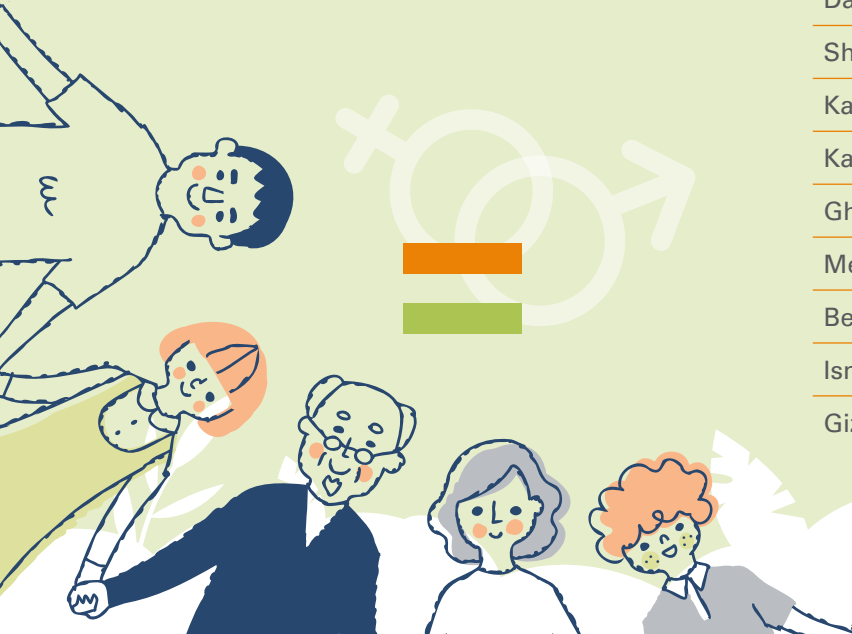
This National Gender Lens Pocketbook is designed to serve as a source of information on the issues of gender and women's empowerment at the subnational level to assist decision makers in formulating policies and programmes; and raise awareness on gender issues.





o Egypt's governorates

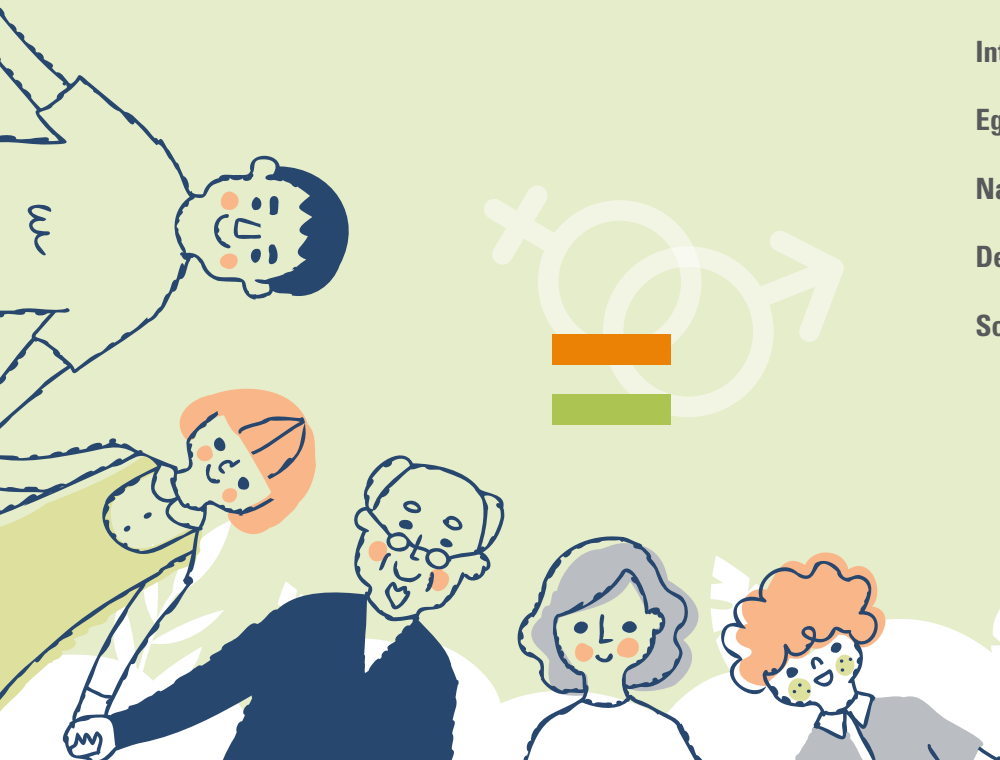
Cairo	Beni-Suef
Alexandria	Fayoum
Port-Said	Menia
Suez	Asyout
Damietta	Suhag
Dakahlia	Qena
Sharkia	Aswan
Kalyoubia	Luxor
Kafr-El-Sheikh	Red Sea
Gharbia	El-Waadi El-Gidid
Menoufia	Matrouh
Behera	North Sinai
Ismailia	South Sinai
Giza	

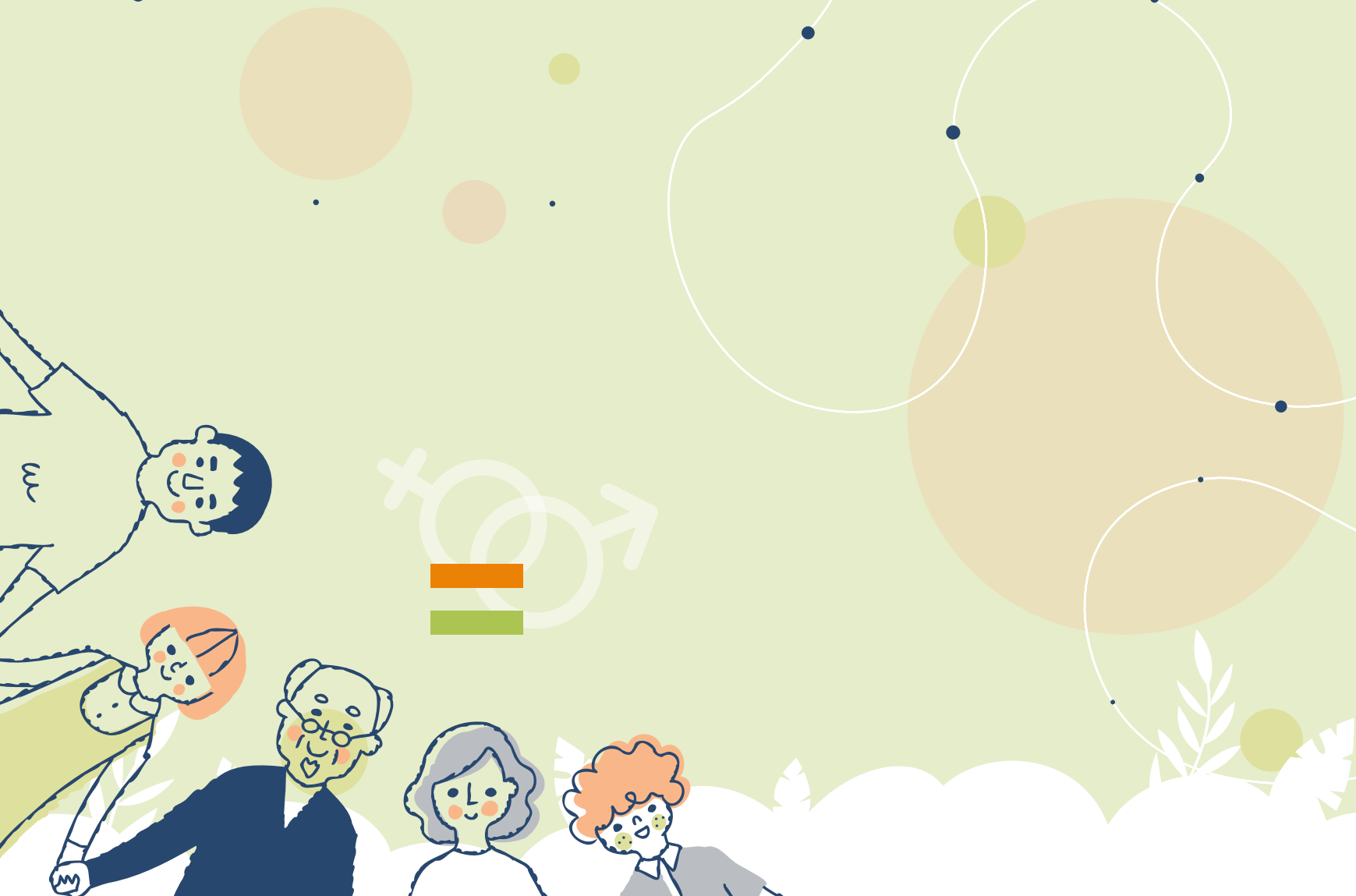




o Contents

Acknowledgements	1
Introduction	1
Egypt's governorates	3
National Profile	7
Definitions	63
Sources	69



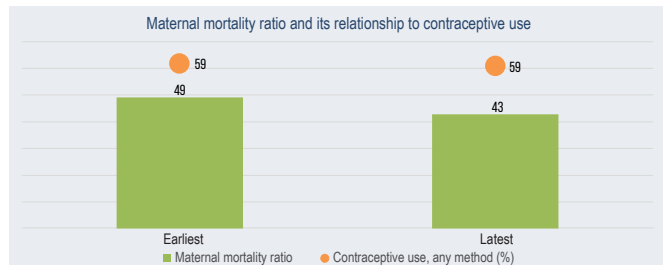
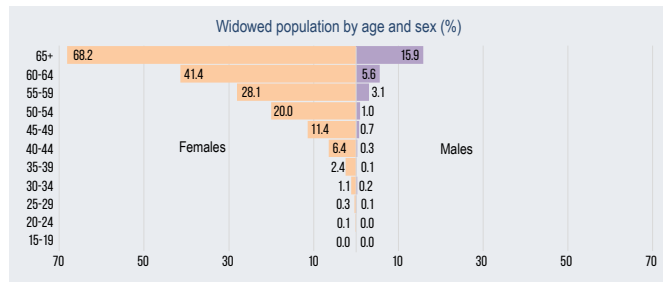




Egypt



	Latest
Total population (number)	102060688
Total population (%)	100
Sex ratio (males per 100 females)	102
Female early marriage before age 18 (%)	22



	Earliest		Latest	
	Women	Men	Women	Men
Population				
Life expectancy at birth (years)	74	69	76	73
Population below 15 years (%)	30	31	34	34
Population aged 15-64 years (%)	65	64	62	62
Population aged 65+ (%)	5	4	4	4

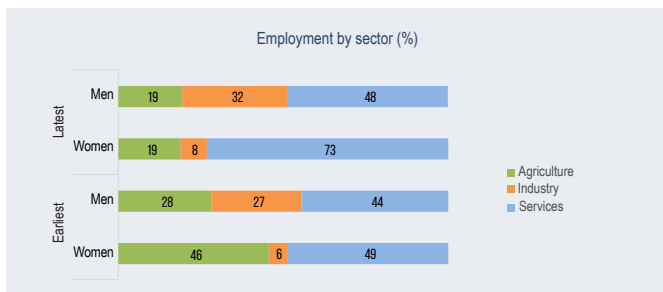
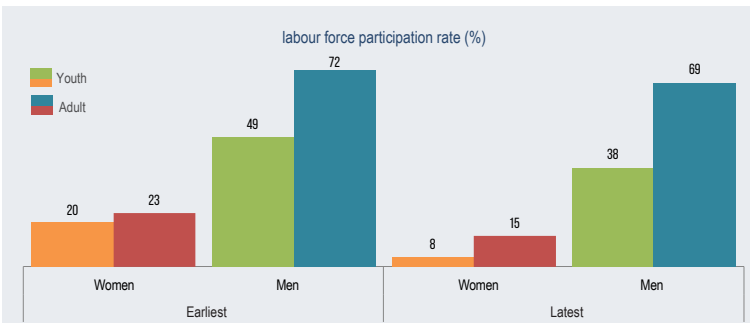
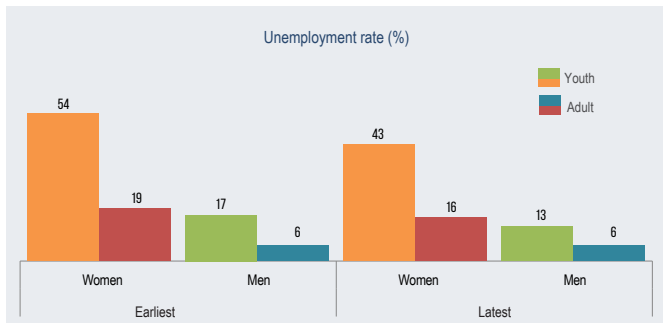
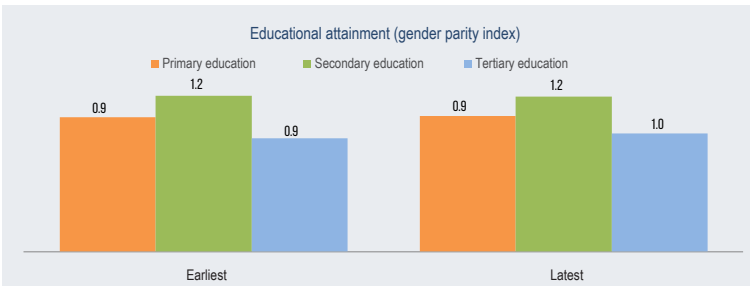
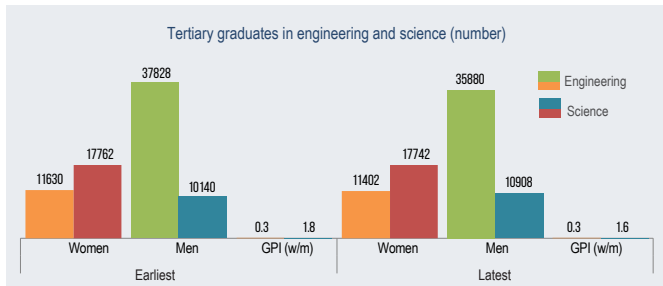
	Earliest	Latest
Dependency		
Child dependency ratio	48	55
Old age dependency ratio	7	6
Total dependency ratio	55	62

	Earliest	Latest
Maternal health		
Adolescent fertility rate	20	23
Total fertility rate	3	3
Maternal mortality ratio	49	43
Contraceptive use, any method (%)	59	59
Condom use (%)	1	1
Births attended by skilled health personnel (%)	74	92
Antenatal care coverage, At least one time (%)	71	90
Antenatal care coverage, At least four times (%)	61	83

	Earliest		Latest	
	Women	Men	Women	Men
Inequality				
Youth not in education, employment or training (%)	46	9	35	19

	Earliest		Latest	
	Women	Men	Women	Men
Literacy				
Youth illiteracy rate (%)	100	15	64	58
Adult illiteracy rate (%)	25	7	23	13

	Earliest		Latest	
	Women	Men	Women	Men
Work				
Youth employment to population ratio (%)	9	41
Adult employment to population ratio (%)	18	69	13	65

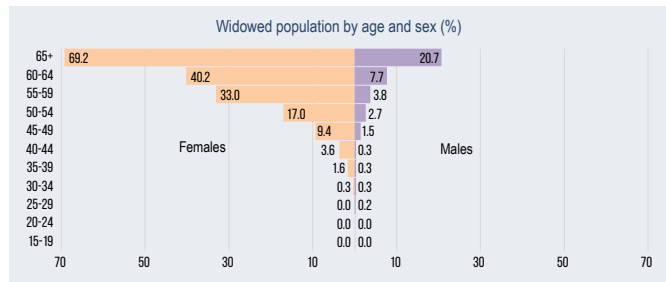




Cairo



	Latest
Total population (number)	10044894
Total population (%)	10
Sex ratio (males per 100 females)	107
Female early marriage before age 18 (%)	18



	Earliest		Latest	
	Women	Men	Women	Men
Population				
Life expectancy at birth (years)	--	--	--	--
Population below 15 years (%)	30	31	27	27
Population aged 15-64 years (%)	65	64	68	68
Population aged 65+ (%)	5	4	5	5

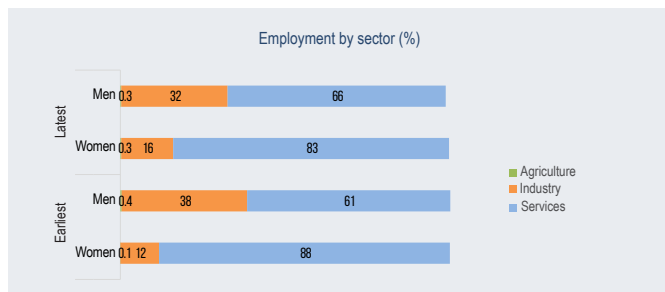
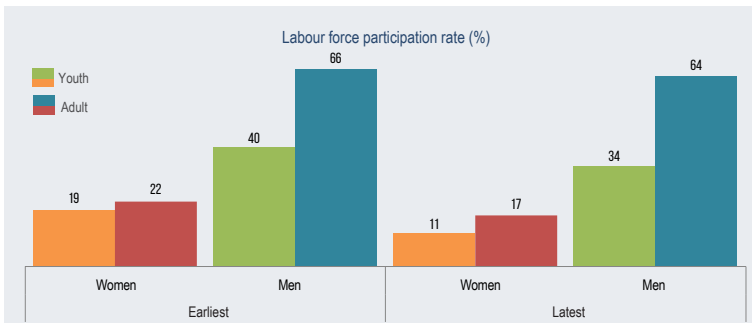
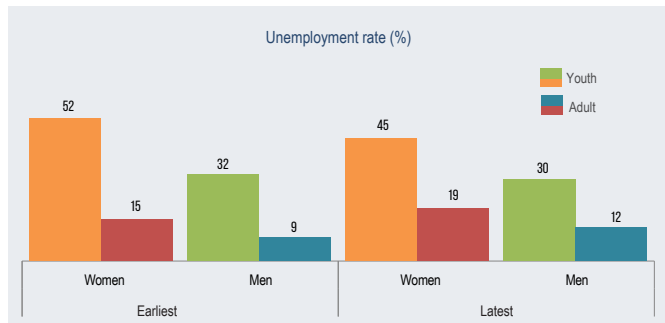
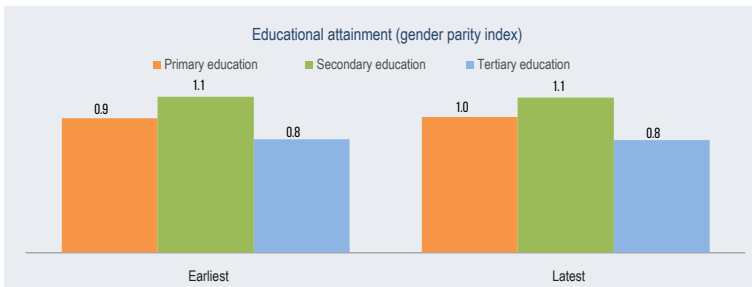
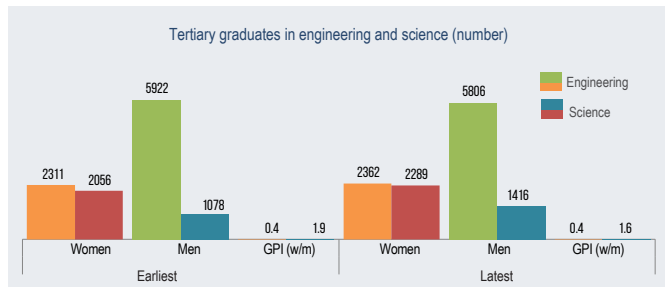
	Earliest	Latest
Dependency		
Child dependency ratio	48	39
Old age dependency ratio	7	7
Total dependency ratio	55	46

	Earliest	Latest
Maternal health		
Adolescent fertility rate	14	10
Total fertility rate	3	3
Maternal mortality ratio	46	46
Contraceptive use, any method (%)	64	64
Condom use (%)	2	1
Births attended by skilled health personnel (%)	91	98
Antenatal care coverage, At least one time (%)	83	92
Antenatal care coverage, At least four times (%)	79	90

	Earliest		Latest	
	Women	Men	Women	Men
Inequality				
Youth not in education, employment or training (%)	38	13	31	16

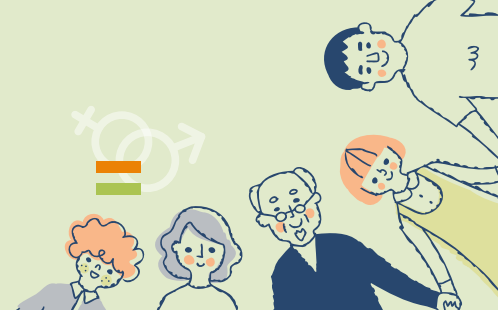
	Earliest		Latest	
	Women	Men	Women	Men
Literacy				
Youth illiteracy rate (%)	53	30	53	26
Adult illiteracy rate (%)	12	5	16	10

	Earliest		Latest	
	Women	Men	Women	Men
Work				
Youth employment to population ratio (%)	8	28	--	--
Adult employment to population ratio (%)	17	61	14	56

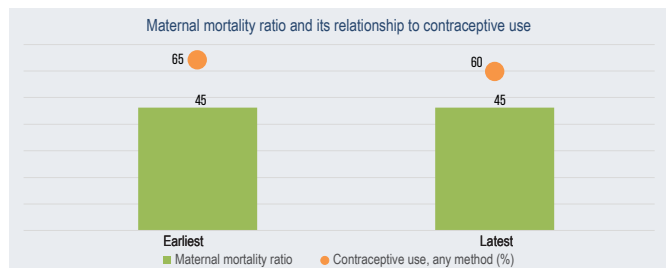
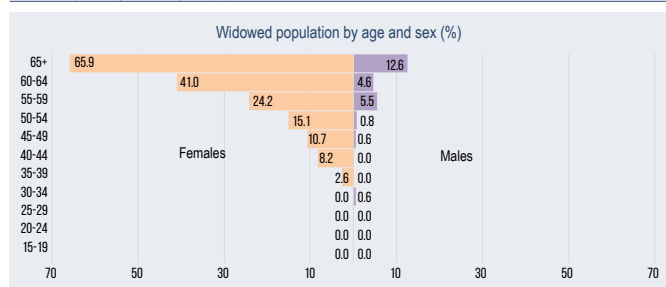




Alexandria



	Latest
Total population (number)	5441866
Total population (%)	5
Sex ratio (males per 100 females)	105
Female early marriage before age 18 (%)	11



Population	Earliest		Latest	
	Women	Men	Women	Men
Life expectancy at birth (years)	--	--	--	--
Population below 15 years (%)	30	31	30	30
Population aged 15-64 years (%)	65	64	66	65
Population aged 65+ (%)	5	4	4	5

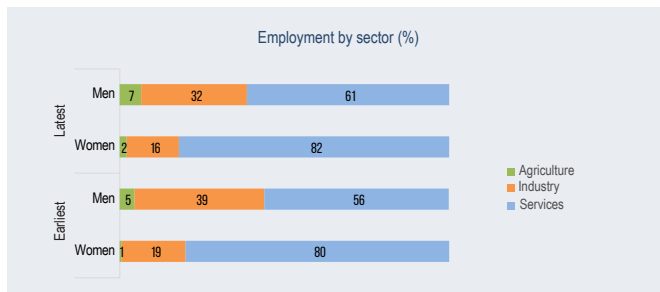
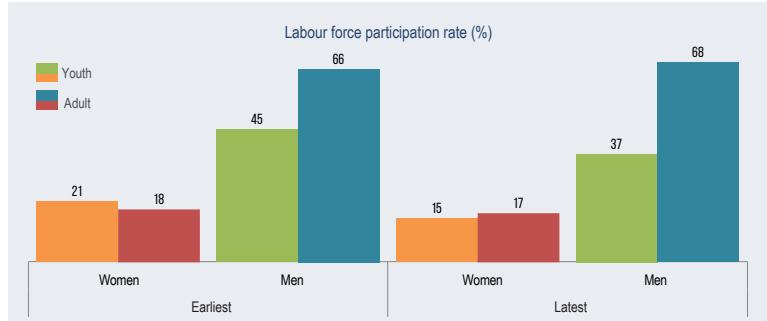
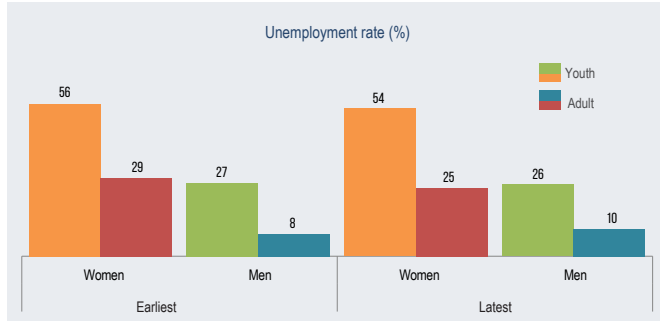
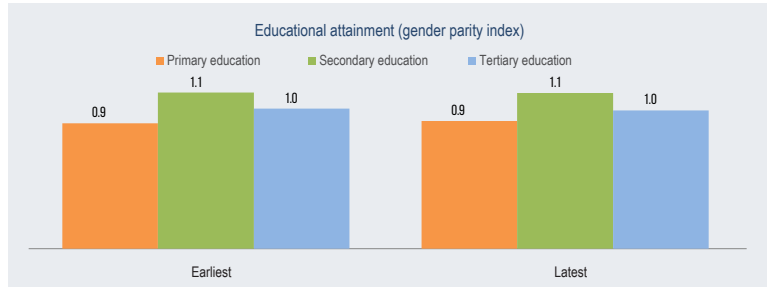
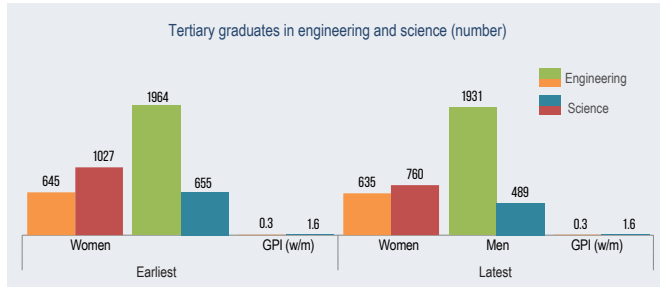
Dependency	Earliest	Latest
Child dependency ratio	48	45
Old age dependency ratio	7	7
Total dependency ratio	55	52

Maternal health	Earliest	Latest
Adolescent fertility rate	10	10
Total fertility rate	2	2
Maternal mortality ratio	45	45
Contraceptive use, any method (%)	65	60
Condom use (%)	3	2
Births attended by skilled health personnel (%)	89	96
Antenatal care coverage, At least one time (%)	89	98
Antenatal care coverage, At least four times (%)	82	93

Inequality	Earliest		Latest	
	Women	Men	Women	Men
Youth not in education, employment or training (%)	41	15	31	19

Literacy	Earliest		Latest	
	Women	Men	Women	Men
Youth illiteracy rate (%)	45	22	49	25
Adult illiteracy rate (%)	16	7	13	9

Work	Earliest		Latest	
	Women	Men	Women	Men
Youth employment to population ratio (%)	9	32	--	--
Adult employment to population ratio (%)	12	60	12	61





Port-Said



	Latest
Total population (number)	780515
Total population (%)	1
Sex ratio (males per 100 females)	105
Female early marriage before age 18 (%)	17



	Earliest		Latest	
	Women	Men	Women	Men
Population				
Life expectancy at birth (years)	--	--	--	--
Population below 15 years (%)	30	31	27	27
Population aged 15-64 years (%)	65	64	67	66
Population aged 65+ (%)	5	4	6	6

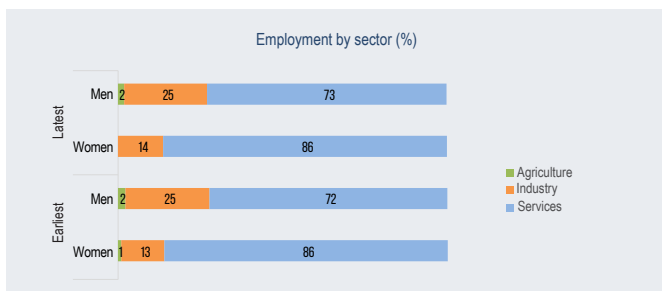
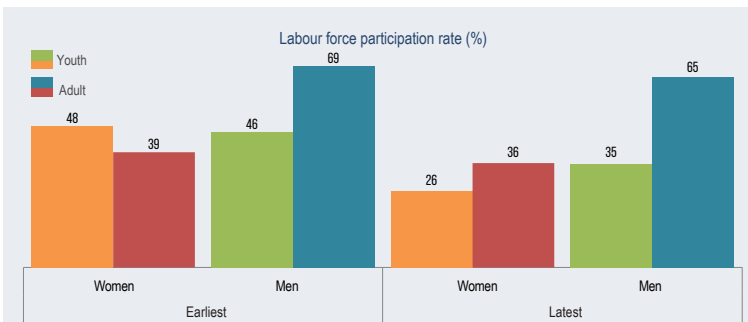
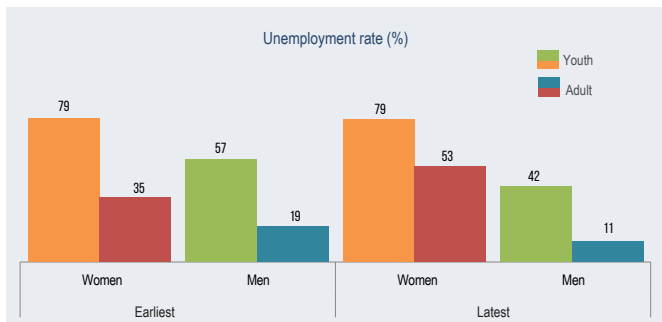
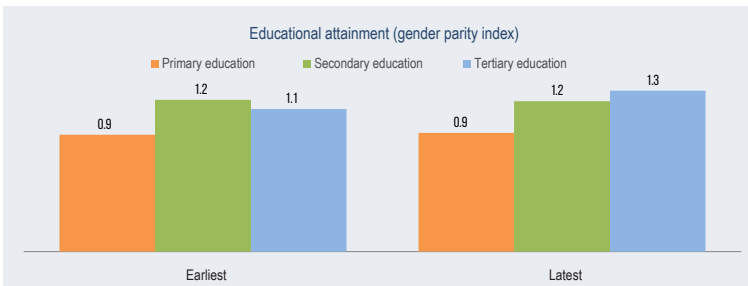
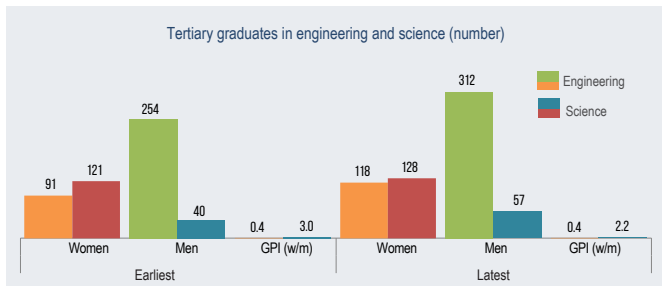
	Earliest	Latest
Dependency		
Child dependency ratio	48	41
Old age dependency ratio	7	9
Total dependency ratio	55	50

	Earliest	Latest
Maternal health		
Adolescent fertility rate	5	10
Total fertility rate	2	3
Maternal mortality ratio	30	30
Contraceptive use, any method (%)	62	59
Condom use (%)	3	2
Births attended by skilled health personnel (%)	98	100
Antenatal care coverage, At least one time (%)	93	99
Antenatal care coverage, At least four times (%)	89	97

	Earliest		Latest	
	Women	Men	Women	Men
Inequality				
Youth not in education, employment or training (%)	46	22	31	22

	Earliest		Latest	
	Women	Men	Women	Men
Literacy				
Youth illiteracy rate (%)	68	18	71	27
Adult illiteracy rate (%)	13	8	10	6

	Earliest		Latest	
	Women	Men	Women	Men
Work				
Youth employment to population ratio (%)	13	26	--	--
Adult employment to population ratio (%)	19	59	17	58

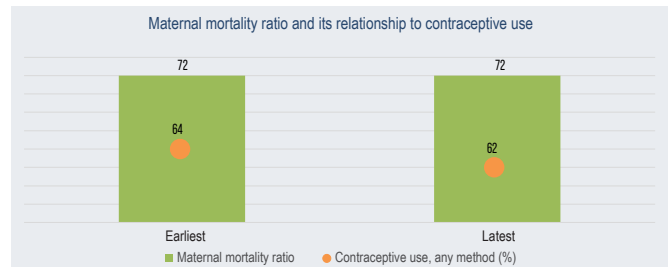
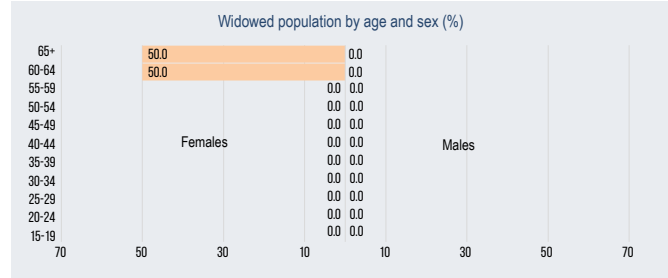




Suez



	Latest
Total population (number)	773840
Total population (%)	1
Sex ratio (males per 100 females)	105
Female early marriage before age 18 (%)	10



Population	Earliest		Latest	
	Women	Men	Women	Men
Life expectancy at birth (years)	--	--	--	--
Population below 15 years (%)	30	31	32	32
Population aged 15-64 years (%)	65	64	64	63
Population aged 65+ (%)	5	4	4	4

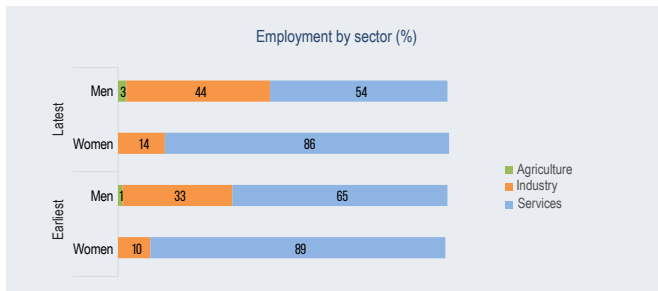
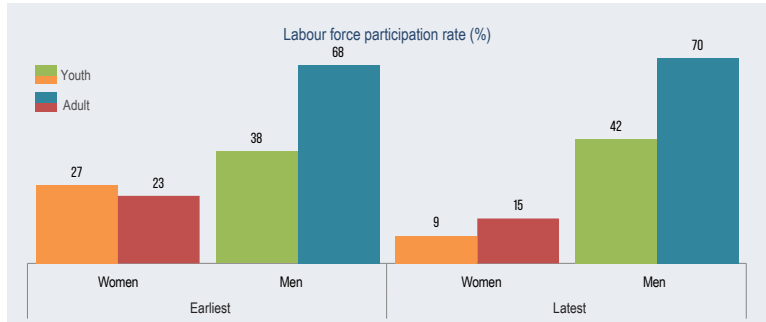
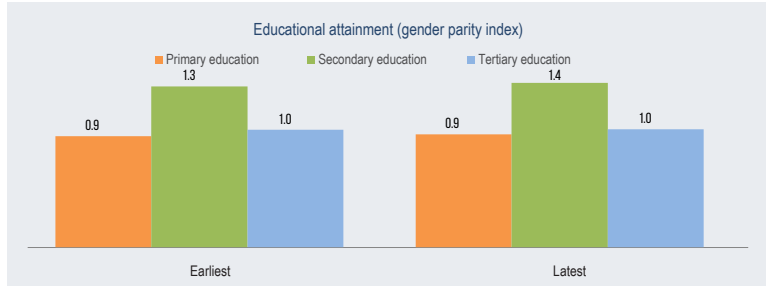
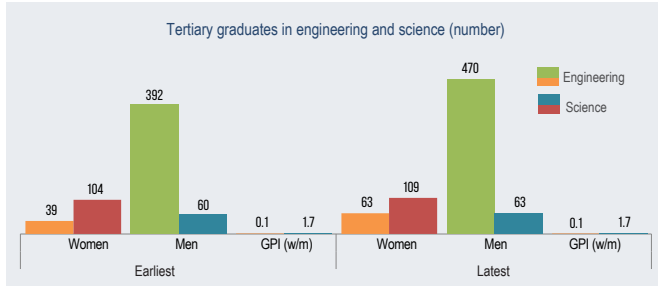
Dependency	Earliest	Latest
Child dependency ratio	48	50
Old age dependency ratio	7	6
Total dependency ratio	55	57

Maternal health	Earliest	Latest
Adolescent fertility rate	12	6
Total fertility rate	3	3
Maternal mortality ratio	72	72
Contraceptive use, any method (%)	64	62
Condom use (%)	3	2
Births attended by skilled health personnel (%)	92	99
Antenatal care coverage, At least one time (%)	85	94
Antenatal care coverage, At least four times (%)	79	89

Inequality	Earliest		Latest	
	Women	Men	Women	Men
Youth not in education, employment or training (%)	46	12	35	32

Literacy	Earliest		Latest	
	Women	Men	Women	Men
Youth illiteracy rate (%)	68	39	66	28
Adult illiteracy rate (%)	16	10	15	7

Work	Earliest		Latest	
	Women	Men	Women	Men
Youth employment to population ratio (%)	5	27	--	--
Adult employment to population ratio (%)	14	63	12	62

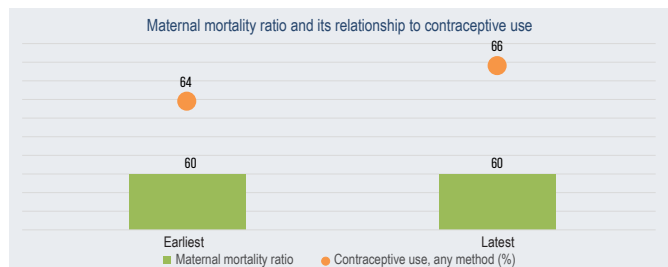
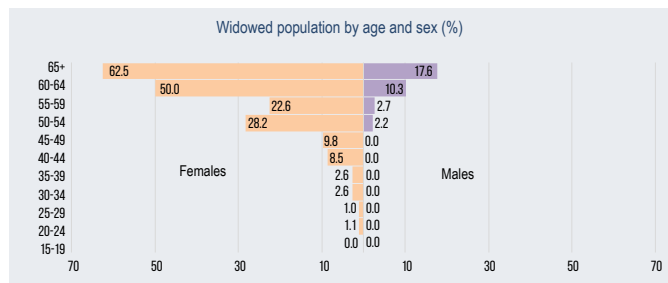




Damietta



	Latest
Total population (number)	1585253
Total population (%)	2
Sex ratio (males per 100 females)	105
Female early marriage before age 18 (%)	15



	Earliest		Latest	
	Women	Men	Women	Men
Population				
Life expectancy at birth (years)	--	--	--	--
Population below 15 years (%)	30	31	34	34
Population aged 15-64 years (%)	65	64	63	62
Population aged 65+ (%)	5	4	4	4

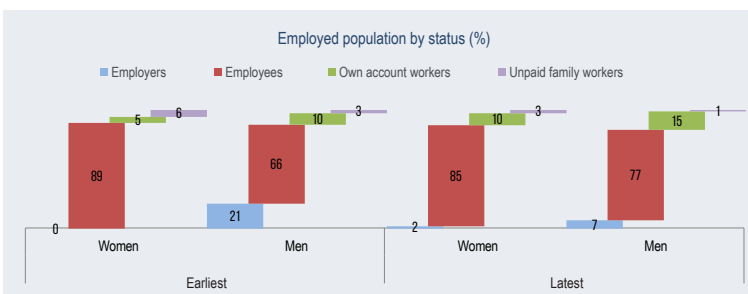
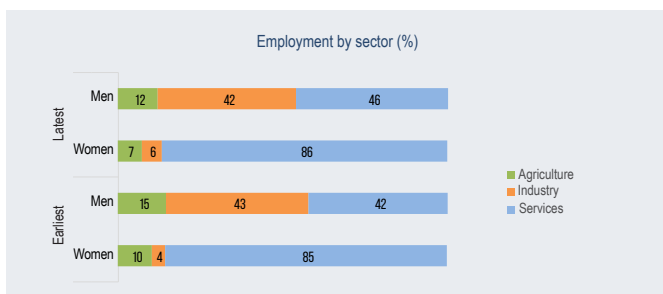
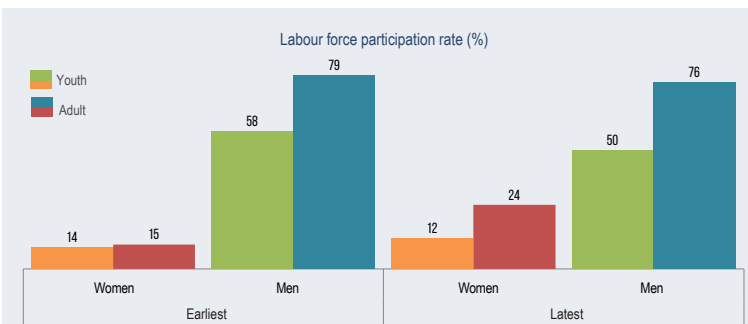
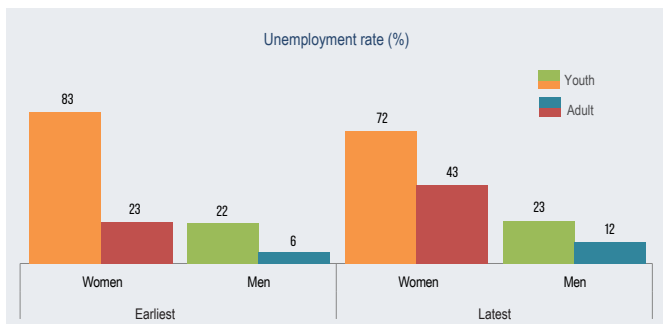
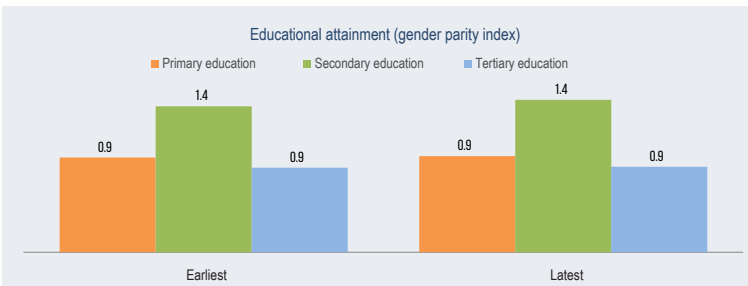
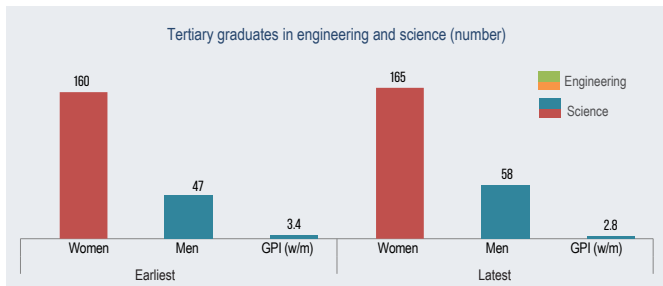
	Earliest	Latest
Dependency		
Child dependency ratio	48	54
Old age dependency ratio	7	6
Total dependency ratio	55	61

	Earliest	Latest
Maternal health		
Adolescent fertility rate	13	29
Total fertility rate	3	3
Maternal mortality ratio	60	60
Contraceptive use, any method (%)	64	66
Condom use (%)	1	1
Births attended by skilled health personnel (%)	98	99
Antenatal care coverage, At least one time (%)	87	97
Antenatal care coverage, At least four times (%)	80	95

	Earliest		Latest	
	Women	Men	Women	Men
Inequality				
Youth not in education, employment or training (%)	44	8	30	13

	Earliest		Latest	
	Women	Men	Women	Men
Literacy				
Youth illiteracy rate (%)	94	18	69	23
Adult illiteracy rate (%)	30	23	14	16

	Earliest		Latest	
	Women	Men	Women	Men
Work				
Youth employment to population ratio (%)	3	52	--	--
Adult employment to population ratio (%)	10	77	14	68

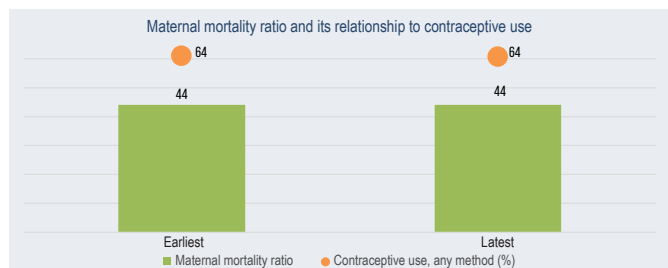
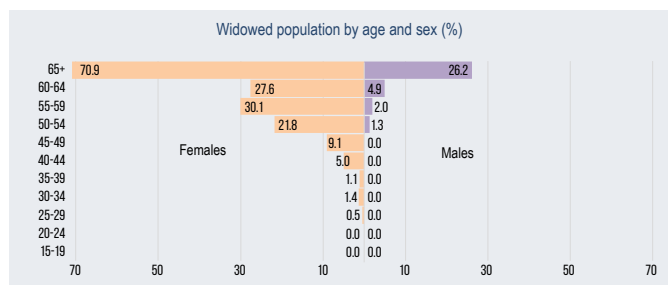




Dakahlia



	Latest
Total population (number)	6888962
Total population (%)	7
Sex ratio (males per 100 females)	103
Female early marriage before age 18 (%)	24



	Earliest		Latest	
	Women	Men	Women	Men
Population	---	---	---	---
Life expectancy at birth (years)	---	---	---	---
Population below 15 years (%)	30	31	33	34
Population aged 15-64 years (%)	65	64	62	61
Population aged 65+ (%)	5	4	4	4

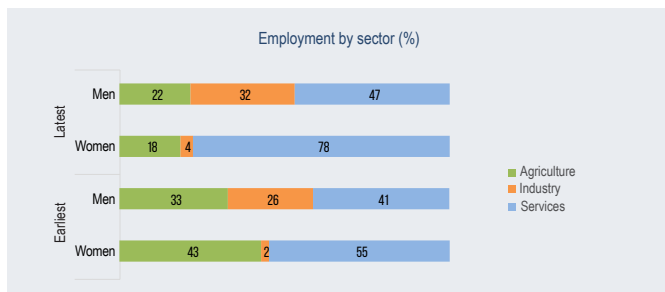
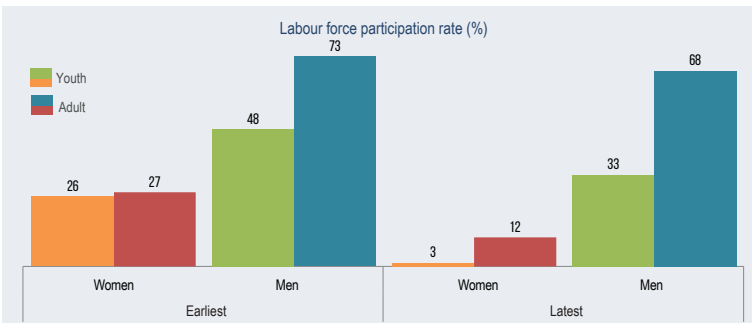
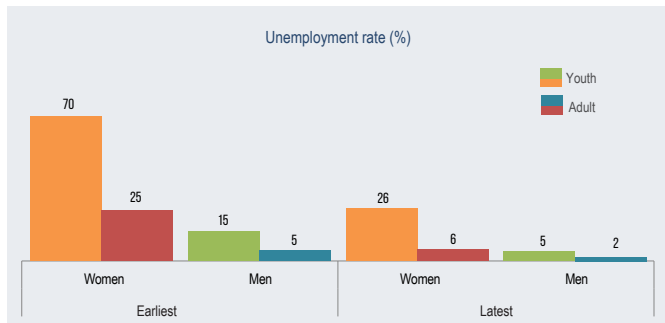
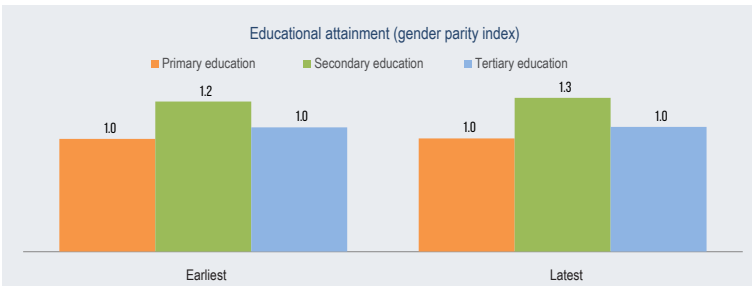
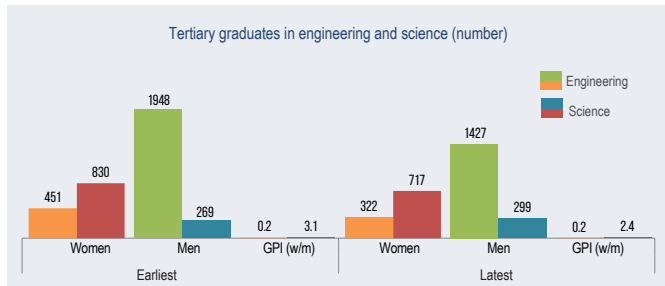
	Earliest	Latest
Dependency		
Child dependency ratio	48	55
Old age dependency ratio	7	7
Total dependency ratio	55	62

	Earliest	Latest
Maternal health		
Adolescent fertility rate	21	22
Total fertility rate	3	3
Maternal mortality ratio	44	44
Contraceptive use, any method (%)	64	64
Condom use (%)	1	0.2
Births attended by skilled health personnel (%)	89	99
Antenatal care coverage, At least one time (%)	86	97
Antenatal care coverage, At least four times (%)	73	93

	Earliest		Latest	
	Women	Men	Women	Men
Inequality				
Youth not in education, employment or training (%)	42	10	26	20

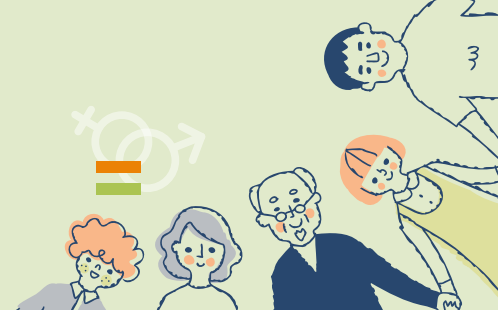
	Earliest		Latest	
	Women	Men	Women	Men
Literacy				
Youth illiteracy rate (%)	73	23	42	7
Adult illiteracy rate (%)	34	18	21	14

	Earliest		Latest	
	Women	Men	Women	Men
Work				
Youth employment to population ratio (%)	5	39	---	---
Adult employment to population ratio (%)	17	69	11	67

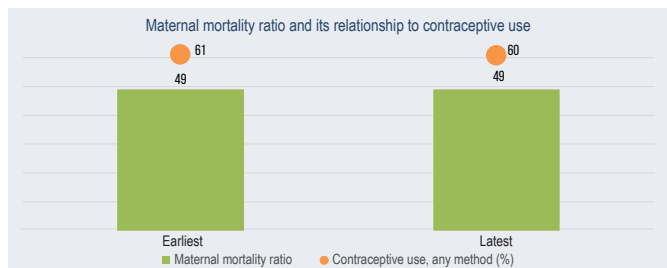
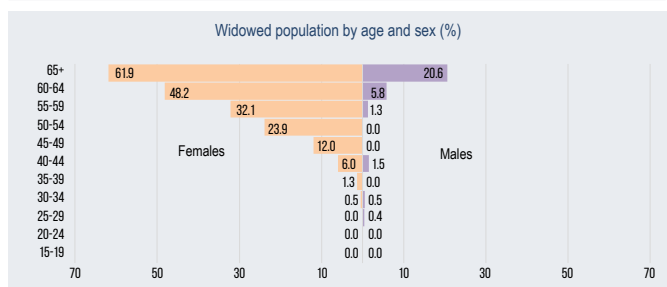




Sharkia



	Latest
Total population (number)	7682770
Total population (%)	8
Sex ratio (males per 100 females)	106
Female early marriage before age 18 (%)	20



	Earliest		Latest	
	Women	Men	Women	Men
Population
Life expectancy at birth (years)	30	31	35	36
Population below 15 years (%)	65	64	61	61
Population aged 15-64 years (%)	5	4	4	4

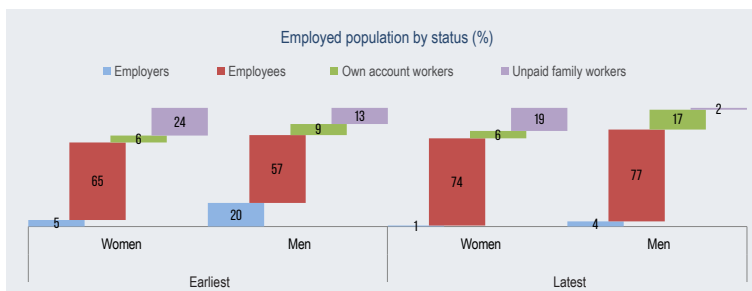
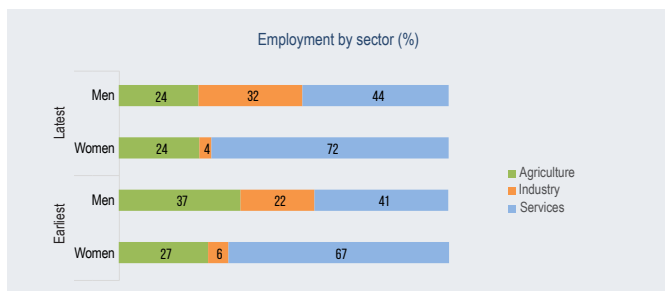
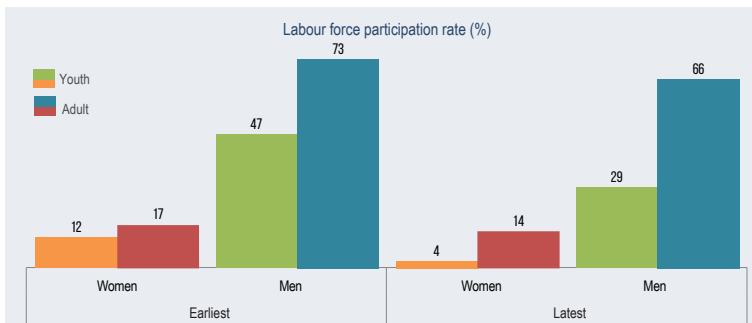
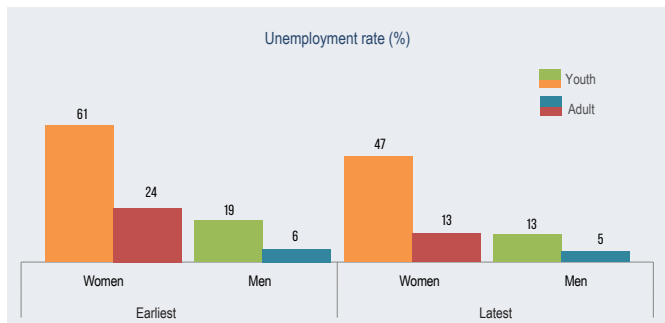
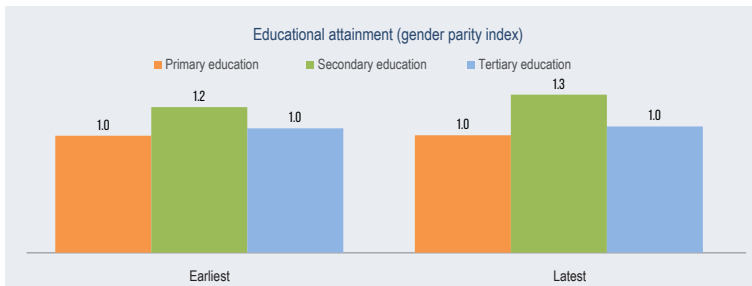
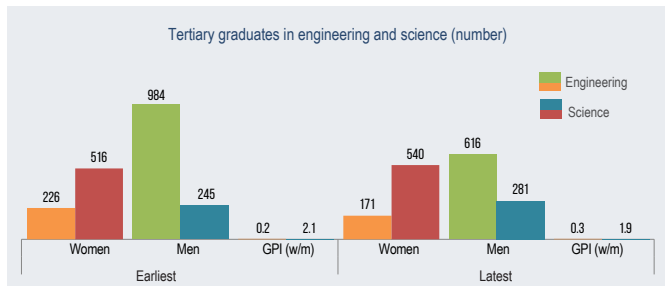
	Earliest	Latest
Dependency		
Child dependency ratio	48	58
Old age dependency ratio	7	6
Total dependency ratio	55	64

	Earliest	Latest
Maternal health		
Adolescent fertility rate	11	32
Total fertility rate	3	4
Maternal mortality ratio	49	49
Contraceptive use, any method (%)	61	60
Condom use (%)	1	1
Births attended by skilled health personnel (%)	74	92
Antenatal care coverage, At least one time (%)	76	93
Antenatal care coverage, At least four times (%)	56	84

	Earliest		Latest	
	Women	Men	Women	Men
Inequality				
Youth not in education, employment or training (%)	45	10	31	21

	Earliest		Latest	
	Women	Men	Women	Men
Literacy				
Youth illiteracy rate (%)	49	16	37	11
Adult illiteracy rate (%)	37	15	23	14

	Earliest		Latest	
	Women	Men	Women	Men
Work				
Youth employment to population ratio (%)	4	39
Adult employment to population ratio (%)	13	69	13	63

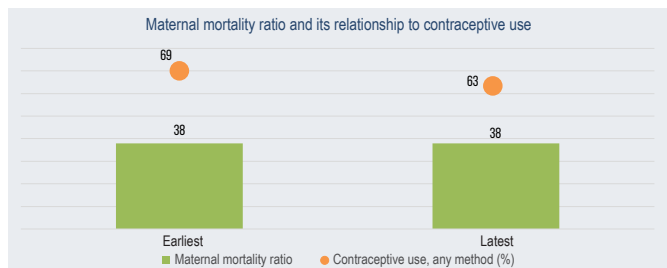
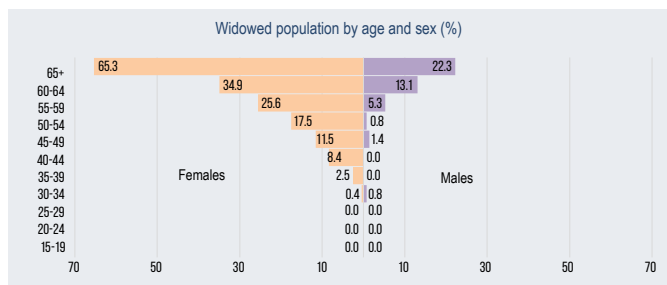




Kalyoubia



	Latest
Total population (number)	5982567
Total population (%)	6
Sex ratio (males per 100 females)	106
Female early marriage before age 18 (%)	20



	Earliest		Latest	
	Women	Men	Women	Men
Population
Life expectancy at birth (years)
Population below 15 years (%)	30	31	34	34
Population aged 15-64 years (%)	65	64	63	62
Population aged 65+ (%)	5	4	3	3

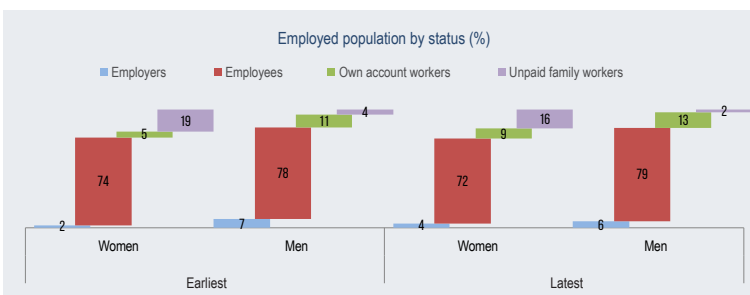
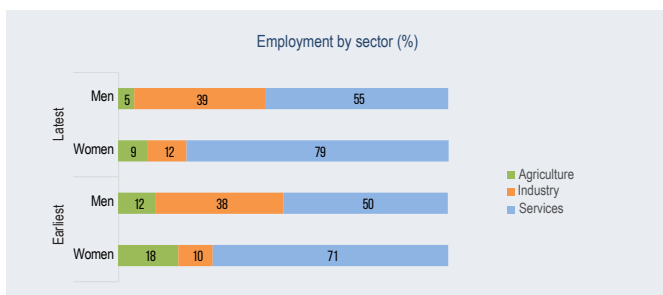
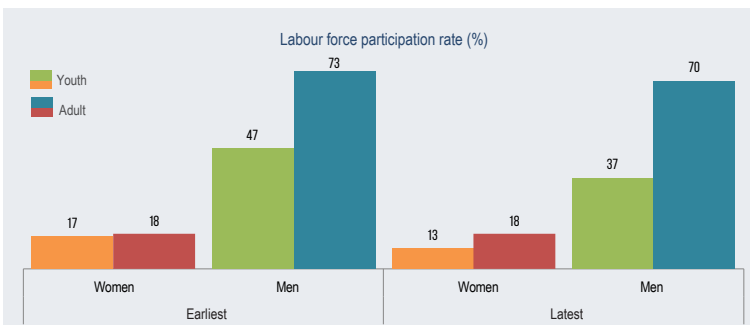
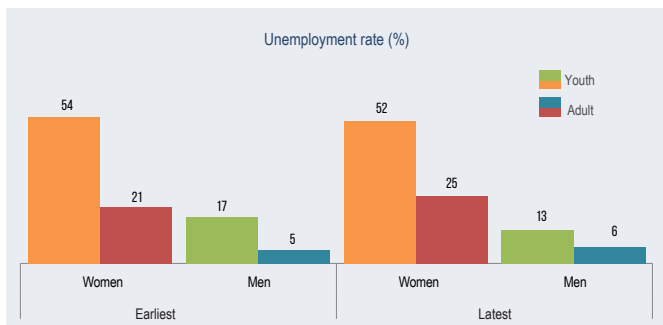
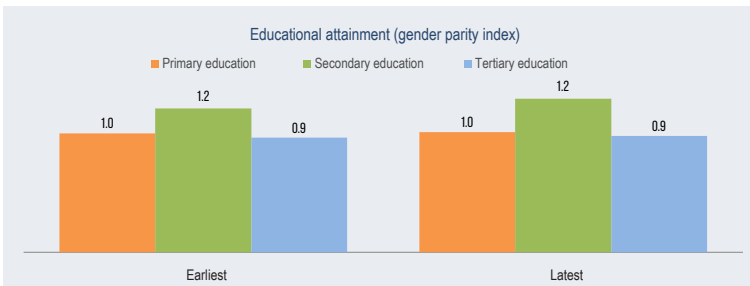
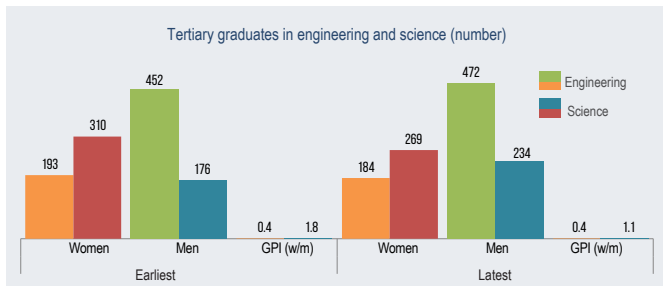
	Earliest	Latest
Dependency		
Child dependency ratio	48	55
Old age dependency ratio	7	5
Total dependency ratio	55	60

	Earliest	Latest
Maternal health		
Adolescent fertility rate	14	28
Total fertility rate	3	4
Maternal mortality ratio	38	38
Contraceptive use, any method (%)	69	63
Condom use (%)	1	1
Births attended by skilled health personnel (%)	82	94
Antenatal care coverage, At least one time (%)	77	87
Antenatal care coverage, At least four times (%)	65	80

	Earliest		Latest	
	Women	Men	Women	Men
Inequality				
Youth not in education, employment or training (%)	47	8	31	20

	Earliest		Latest	
	Women	Men	Women	Men
Literacy				
Youth illiteracy rate (%)	42	22	54	13
Adult illiteracy rate (%)	38	15	19	10

	Earliest		Latest	
	Women	Men	Women	Men
Work				
Youth employment to population ratio (%)	7	40
Adult employment to population ratio (%)	13	70	13	66

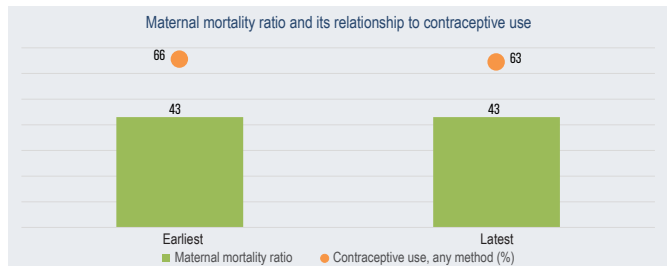
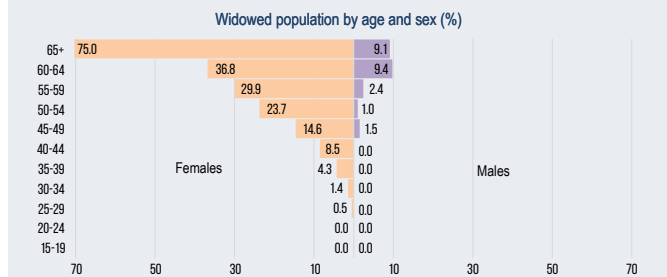




Kafr-El-Sheikh



	Latest
Total population (number)	3620887
Total population (%)	4
Sex ratio (males per 100 females)	105
Female early marriage before age 18 (%)	17



	Earliest		Latest	
	Women	Men	Women	Men
Population
Life expectancy at birth (years)
Population below 15 years (%)	30	31	34	35
Population aged 15-64 years (%)	65	64	62	61
Population aged 65+ (%)	5	4	4	4

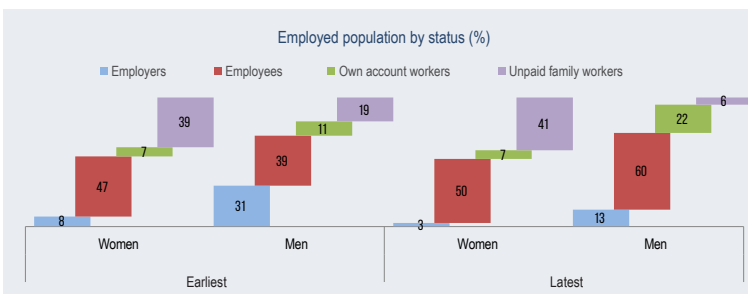
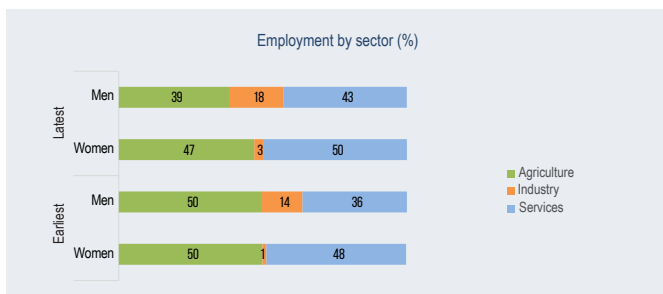
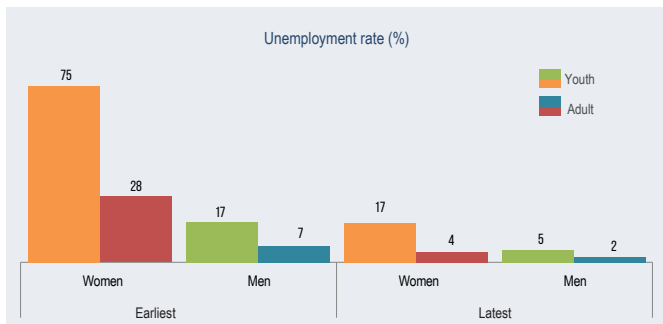
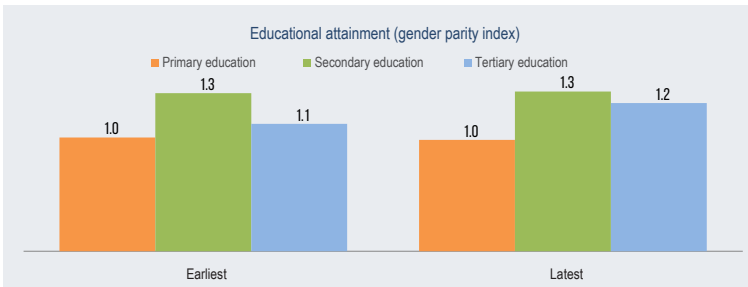
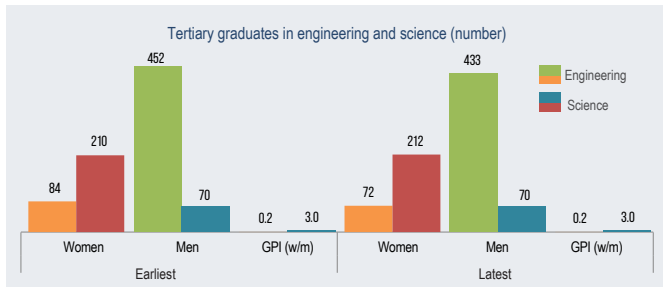
	Earliest	Latest
Dependency		
Child dependency ratio	48	55
Old age dependency ratio	7	6
Total dependency ratio	55	62

	Earliest	Latest
Maternal health		
Adolescent fertility rate	20	18
Total fertility rate	3	3
Maternal mortality ratio	43	43
Contraceptive use, any method (%)	66	63
Condom use (%)	1	0.1
Births attended by skilled health personnel (%)	88	99
Antenatal care coverage, At least one time (%)	77	95
Antenatal care coverage, At least four times (%)	63	91

	Earliest		Latest	
	Women	Men	Women	Men
Inequality				
Youth not in education, employment or training (%)	57	8	31	15

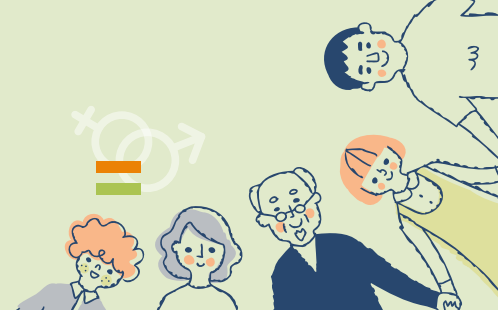
	Earliest		Latest	
	Women	Men	Women	Men
Literacy				
Youth illiteracy rate (%)	29	10	24	4
Adult illiteracy rate (%)	43	25	27	16

	Earliest		Latest	
	Women	Men	Women	Men
Work				
Youth employment to population ratio (%)	6	50
Adult employment to population ratio (%)	12	74	18	69

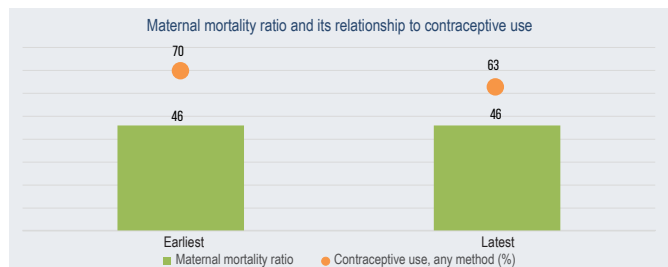
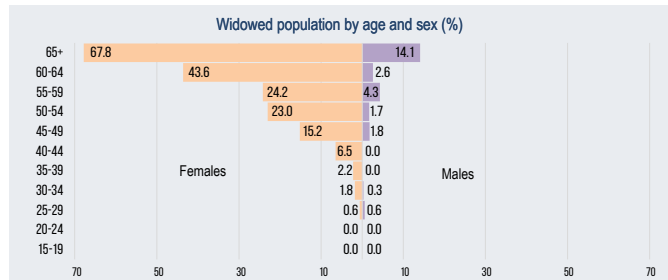




Gharbia



	Latest
Total population (number)	5309440
Total population (%)	5
Sex ratio (males per 100 females)	104
Female early marriage before age 18 (%)	15



	Earliest		Latest	
	Women	Men	Women	Men
Population				
Life expectancy at birth (years)	--	--	--	--
Population below 15 years (%)	30	31	34	33
Population aged 15-64 years (%)	65	64	64	63
Population aged 65+ (%)	5	4	4	4

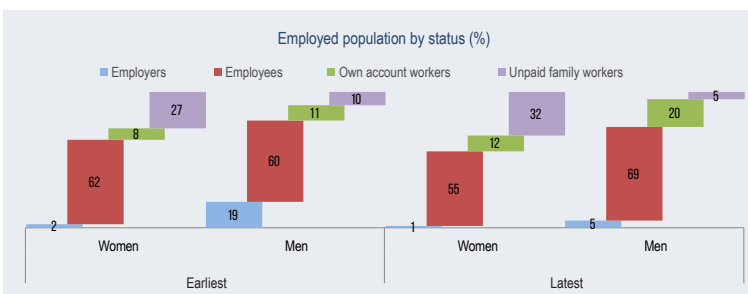
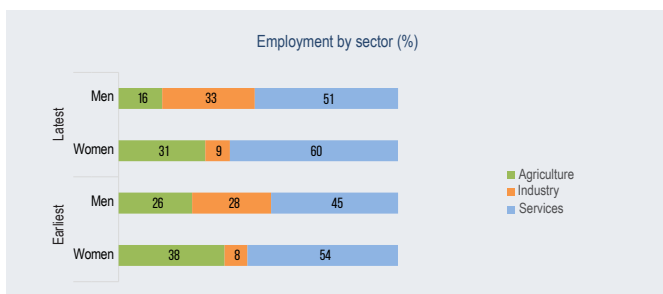
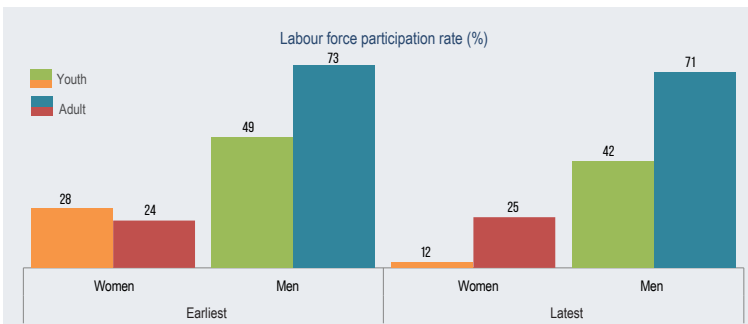
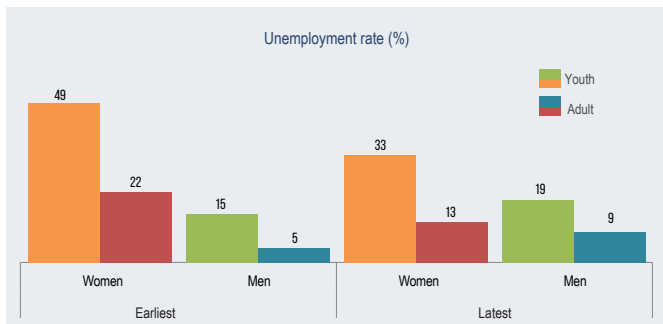
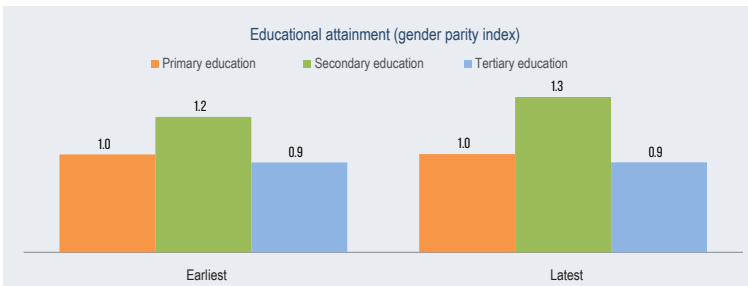
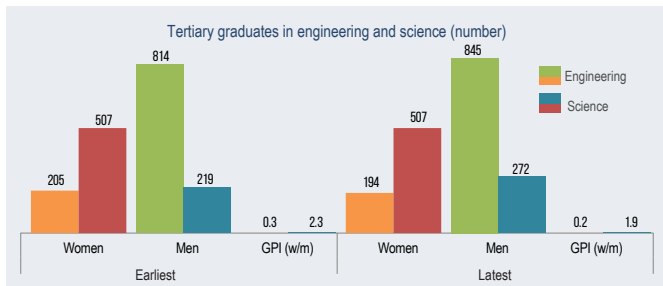
	Earliest	Latest
Dependency		
Child dependency ratio	48	51
Old age dependency ratio	7	7
Total dependency ratio	55	58

	Earliest	Latest
Maternal health		
Adolescent fertility rate	15	18
Total fertility rate	3	3
Maternal mortality ratio	46	46
Contraceptive use, any method (%)	70	63
Condom use (%)	1	0.2
Births attended by skilled health personnel (%)	85	96
Antenatal care coverage, At least one time (%)	81	90
Antenatal care coverage, At least four times (%)	79	83

	Earliest		Latest	
	Women	Men	Women	Men
Inequality				
Youth not in education, employment or training (%)	38	8	28	23

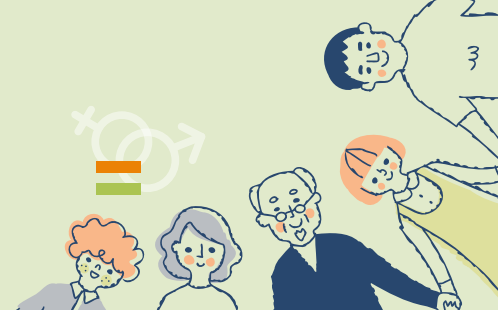
	Earliest		Latest	
	Women	Men	Women	Men
Literacy				
Youth illiteracy rate (%)	51	24	32	13
Adult illiteracy rate (%)	34	14	20	12

	Earliest		Latest	
	Women	Men	Women	Men
Work				
Youth employment to population ratio (%)	12	42	--	--
Adult employment to population ratio (%)	17	70	22	64

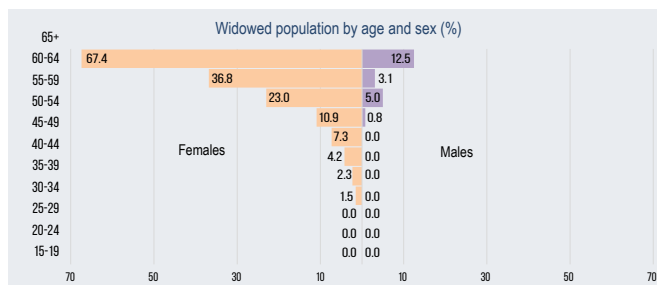




Menoufia



	Latest
Total population (number)	4604599
Total population (%)	5
Sex ratio (males per 100 females)	106
Female early marriage before age 18 (%)	10



	Earliest		Latest	
	Women	Men	Women	Men
Population
Life expectancy at birth (years)	30	31	35	35
Population below 15 years (%)	65	64	61	61
Population aged 15-64 years (%)	5	4	4	4
Population aged 65+ (%)

	Earliest	Latest
	Dependency	...
Child dependency ratio	48	57
Old age dependency ratio	7	7
Total dependency ratio	55	63

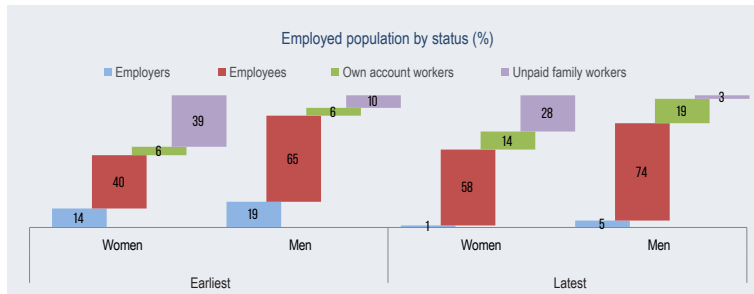
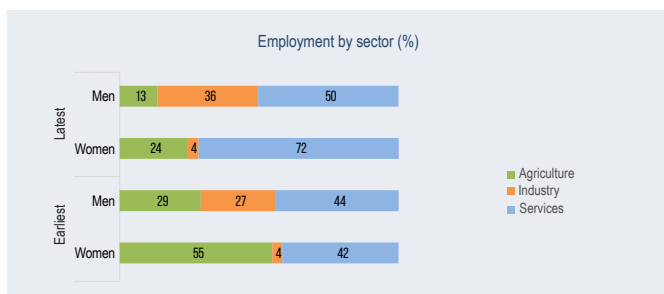
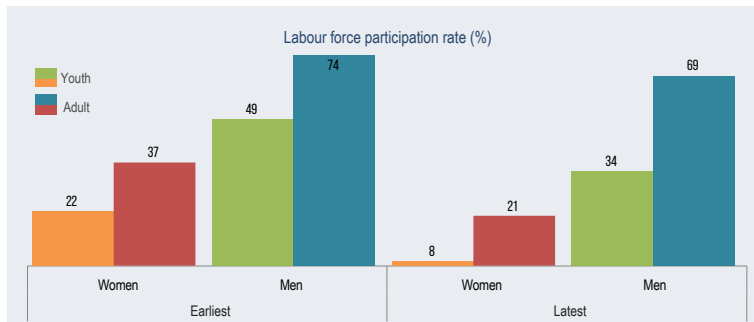
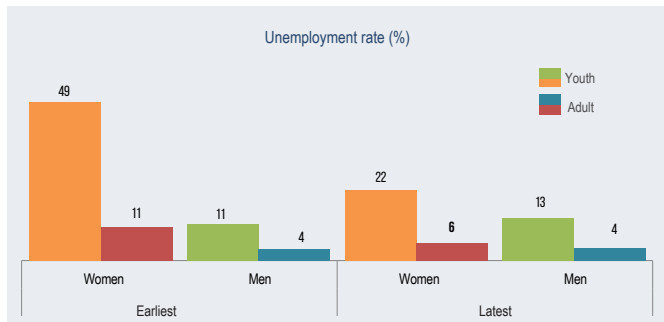
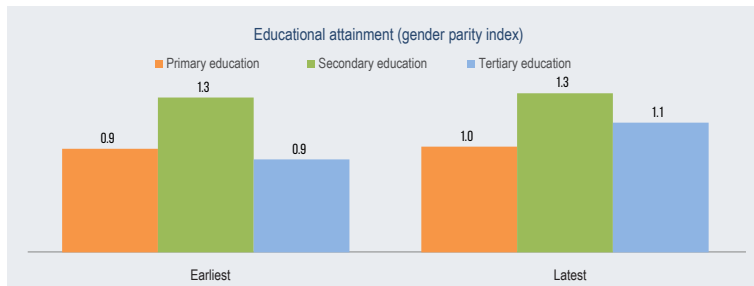
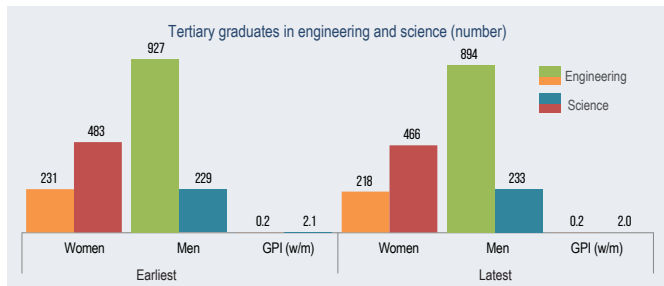
	Earliest	Latest
	Maternal health	...
Adolescent fertility rate	19	18
Total fertility rate	3	4
Maternal mortality ratio	39	39
Contraceptive use, any method (%)	64	67
Condom use (%)	1	0.2
Births attended by skilled health personnel (%)	82	95
Antenatal care coverage, At least one time (%)	74	94
Antenatal care coverage, At least four times (%)	63	89



	Earliest		Latest	
	Women	Men	Women	Men
Inequality
Youth not in education, employment or training (%)	38	7	25	16

	Earliest		Latest	
	Women	Men	Women	Men
Literacy
Youth illiteracy rate (%)	39	14	22	9
Adult illiteracy rate (%)	37	13	18	9

	Earliest		Latest	
	Women	Men	Women	Men
Work
Youth employment to population ratio (%)	13	44
Adult employment to population ratio (%)	31	72	20	66

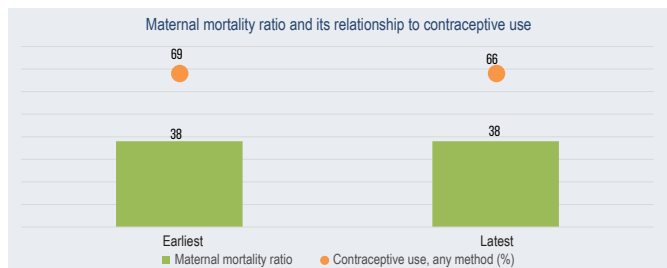
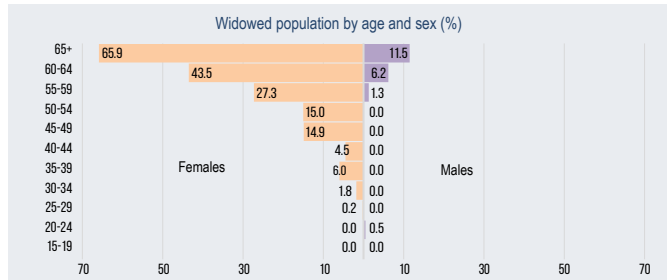




Behera



	Latest
Total population (number)	6676858
Total population (%)	7
Sex ratio (males per 100 females)	106
Female early marriage before age 18 (%)	18



	Earliest		Latest	
	Women	Men	Women	Men
Population
Life expectancy at birth (years)
Population below 15 years (%)	30	31	35	35
Population aged 15-64 years (%)	65	64	61	61
Population aged 65+ (%)	5	4	3	4

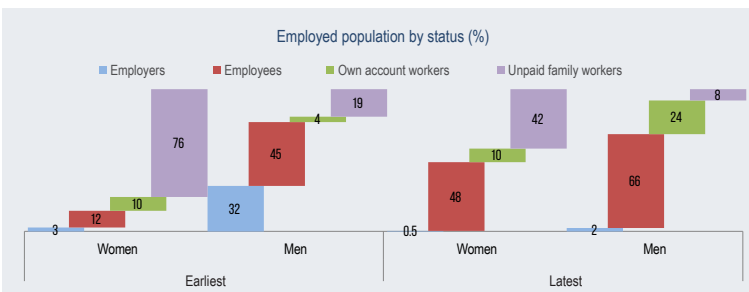
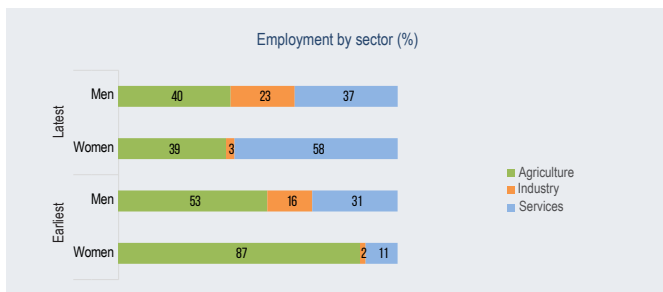
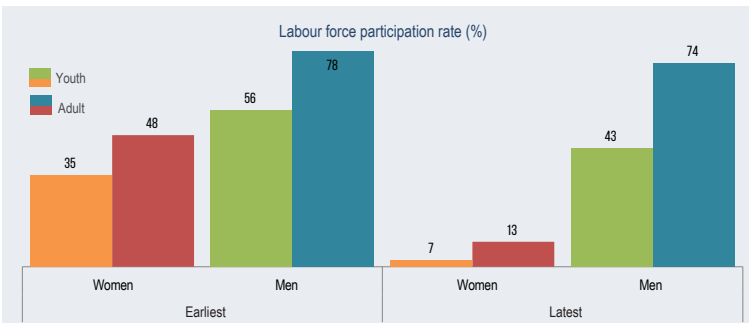
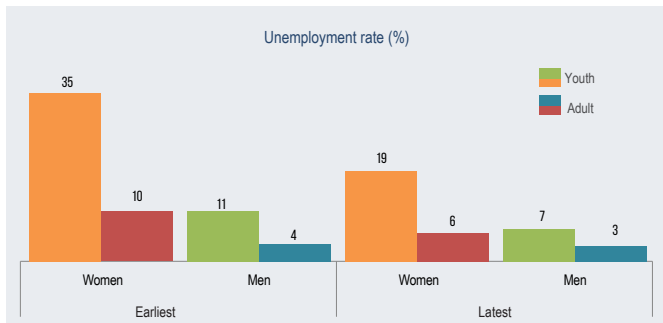
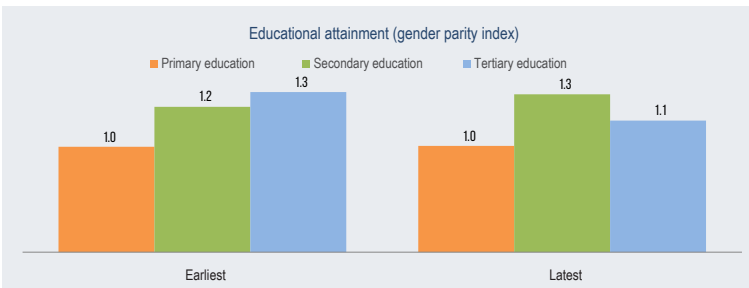
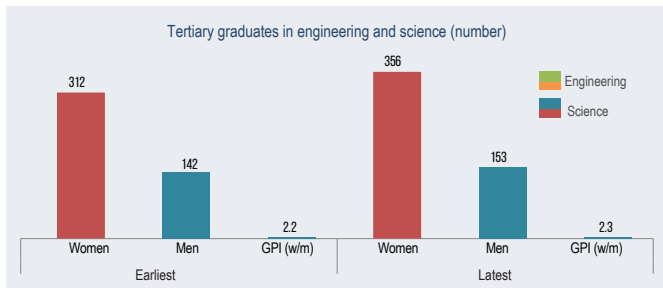
	Earliest	Latest
Dependency		
Child dependency ratio	48	57
Old age dependency ratio	7	6
Total dependency ratio	55	63

	Earliest	Latest
Maternal health		
Adolescent fertility rate	19	27
Total fertility rate	3	4
Maternal mortality ratio	38	38
Contraceptive use, any method (%)	69	66
Condom use (%)	0.4	0.3
Births attended by skilled health personnel (%)	67	93
Antenatal care coverage, At least one time (%)	70	94
Antenatal care coverage, At least four times (%)	62	88

	Earliest		Latest	
	Women	Men	Women	Men
Inequality				
Youth not in education, employment or training (%)	36	6	31	19

	Earliest		Latest	
	Women	Men	Women	Men
Literacy				
Youth illiteracy rate (%)	45	14	34	12
Adult illiteracy rate (%)	49	26	29	15

	Earliest		Latest	
	Women	Men	Women	Men
Work				
Youth employment to population ratio (%)	22	51
Adult employment to population ratio (%)	42	76	12	72

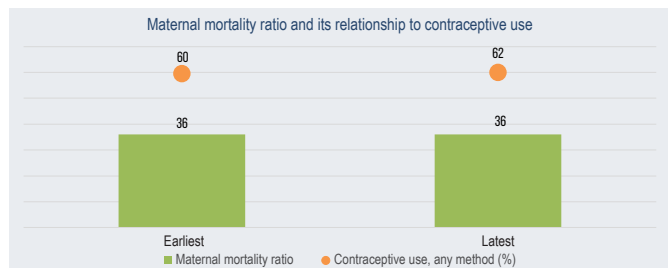
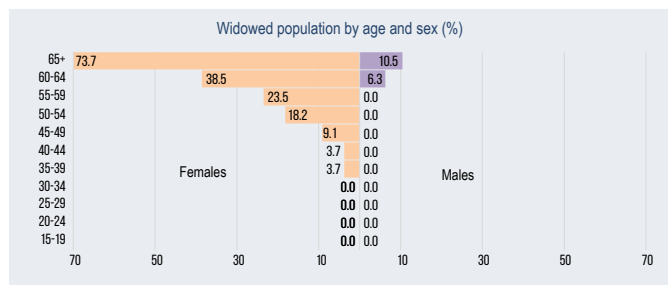




Ismailia



	Latest
Total population (number)	1408847
Total population (%)	1
Sex ratio (males per 100 females)	106
Female early marriage before age 18 (%)	15



Population	Earliest		Latest	
	Women	Men	Women	Men
Life expectancy at birth (years)	--	--	--	--
Population below 15 years (%)	30	31	35	36
Population aged 15-64 years (%)	65	64	61	61
Population aged 65+ (%)	5	4	3	4

Dependency	Earliest	Latest
Child dependency ratio	48	58
Old age dependency ratio	7	5
Total dependency ratio	55	64

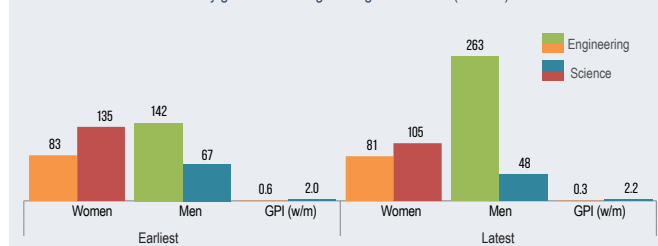
Maternal health	Earliest	Latest
Adolescent fertility rate	13	20
Total fertility rate	3	4
Maternal mortality ratio	36	36
Contraceptive use, any method (%)	60	62
Condom use (%)	2	1
Births attended by skilled health personnel (%)	88	96
Antenatal care coverage, At least one time (%)	84	92
Antenatal care coverage, At least four times (%)	77	85

Inequality	Earliest		Latest	
	Women	Men	Women	Men
Youth not in education, employment or training (%)	38	8	43	20

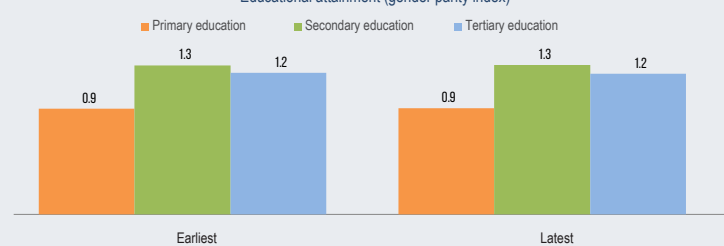
Literacy	Earliest		Latest	
	Women	Men	Women	Men
Youth illiteracy rate (%)	53	18	32	8
Adult illiteracy rate (%)	37	7	18	9

Work	Earliest		Latest	
	Women	Men	Women	Men
Youth employment to population ratio (%)	20	47	--	--
Adult employment to population ratio (%)	22	75	17	66

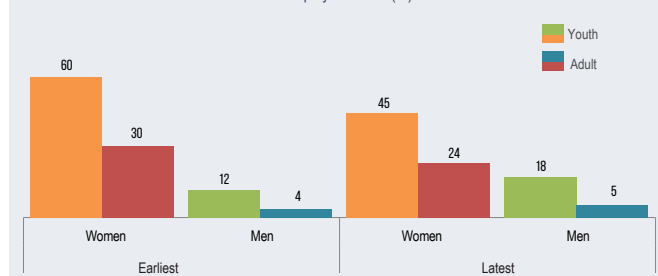
Tertiary graduates in engineering and science (number)



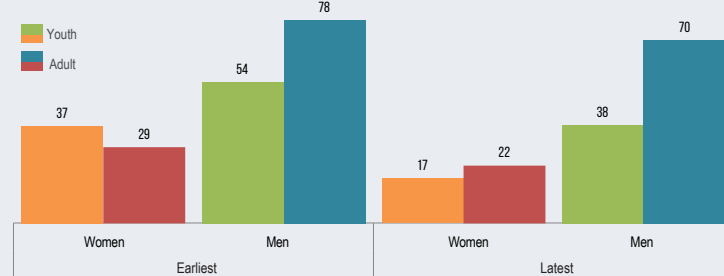
Educational attainment (gender parity index)



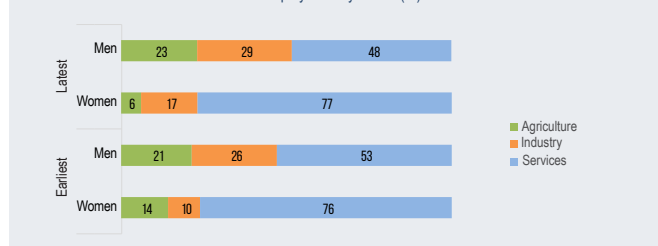
Unemployment rate (%)



Labour force participation rate (%)



Employment by sector (%)

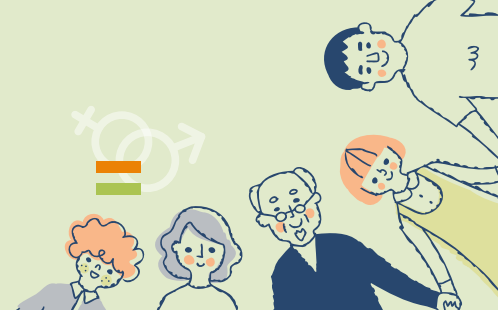


Employed population by status (%)

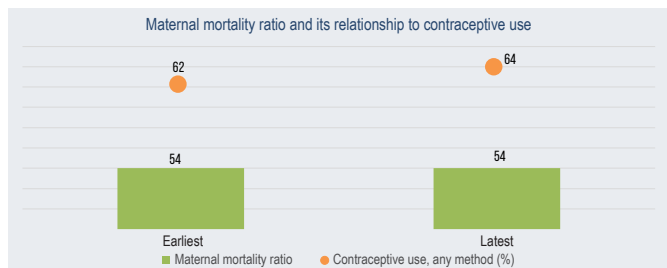
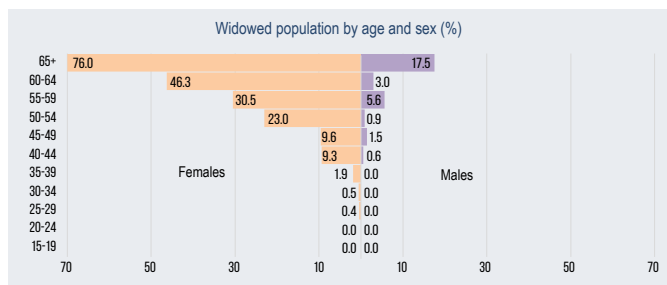




Giza



	Latest
Total population (number)	9250791
Total population (%)	9
Sex ratio (males per 100 females)	107
Female early marriage before age 18 (%)	31



	Earliest		Latest	
	Women	Men	Women	Men
Population
Life expectancy at birth (years)
Population below 15 years (%)	30	31	35	35
Population aged 15-64 years (%)	65	64	62	62
Population aged 65+ (%)	5	4	3	3

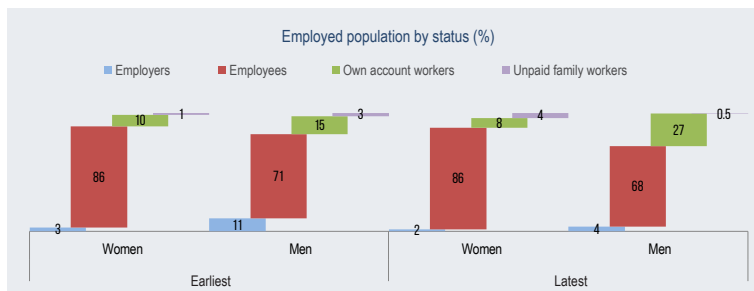
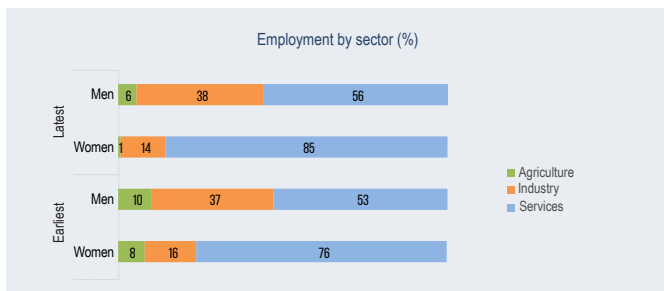
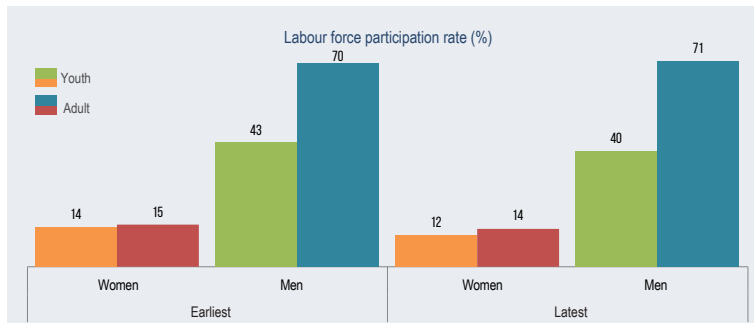
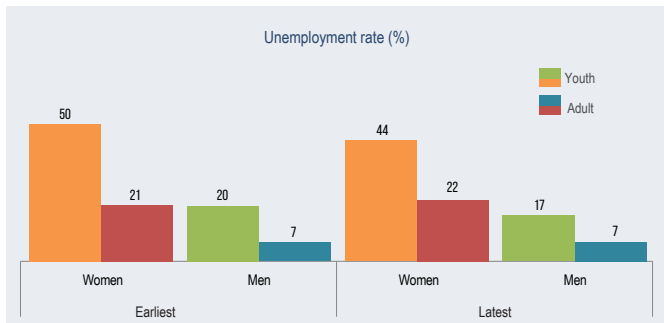
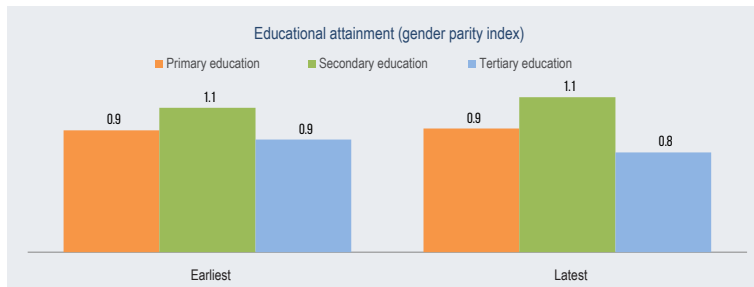
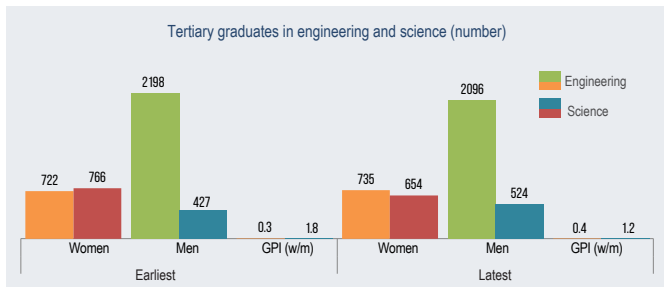
	Earliest	Latest
Dependency		
Child dependency ratio	48	57
Old age dependency ratio	7	5
Total dependency ratio	55	62

	Earliest	Latest
Maternal health		
Adolescent fertility rate	31	23
Total fertility rate	3	3
Maternal mortality ratio	54	54
Contraceptive use, any method (%)	62	64
Condom use (%)	1	0.1
Births attended by skilled health personnel (%)	82	93
Antenatal care coverage, At least one time (%)	71	84
Antenatal care coverage, At least four times (%)	64	80

	Earliest		Latest	
	Women	Men	Women	Men
Inequality				
Youth not in education, employment or training (%)	40	14	41	19

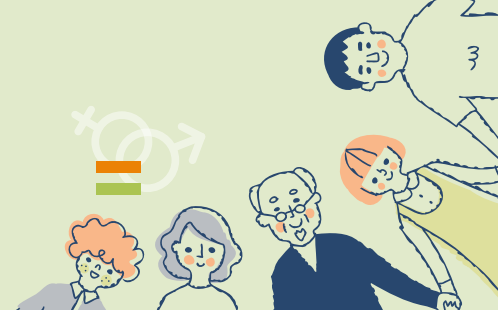
	Earliest		Latest	
	Women	Men	Women	Men
Literacy				
Youth illiteracy rate (%)	52	18	40	18
Adult illiteracy rate (%)	31	12	22	12

	Earliest		Latest	
	Women	Men	Women	Men
Work				
Youth employment to population ratio (%)	8	30
Adult employment to population ratio (%)	12	64	11	66

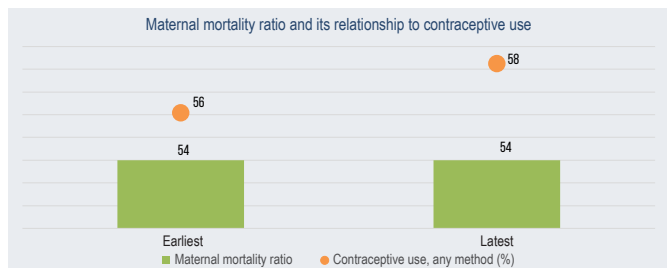
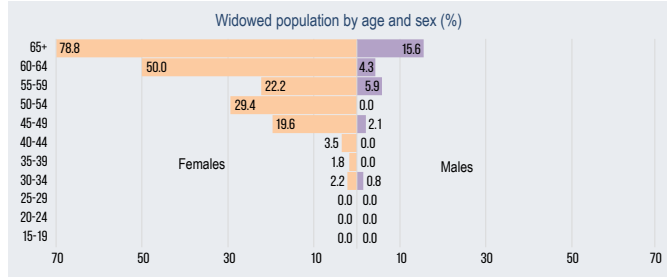




Beni-Suef



	Latest
Total population (number)	3455733
Total population (%)	3
Sex ratio (males per 100 females)	106
Female early marriage before age 18 (%)	36



	Earliest		Latest	
	Women	Men	Women	Men
Population
Life expectancy at birth (years)	30	31	38	38
Population below 15 years (%)	65	64	58	58
Population aged 15-64 years (%)	5	4	4	3

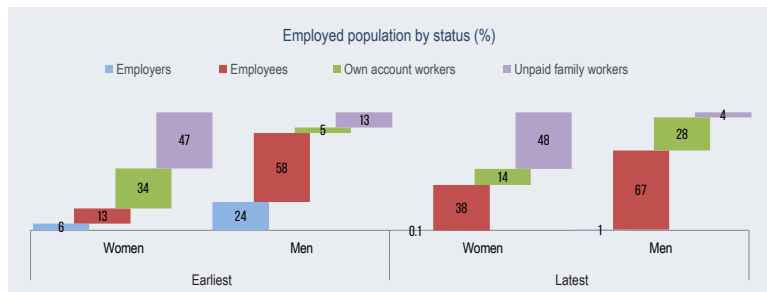
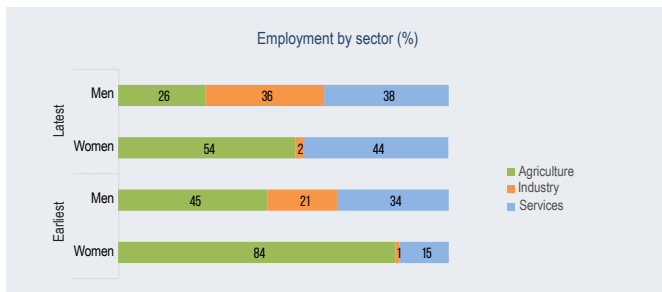
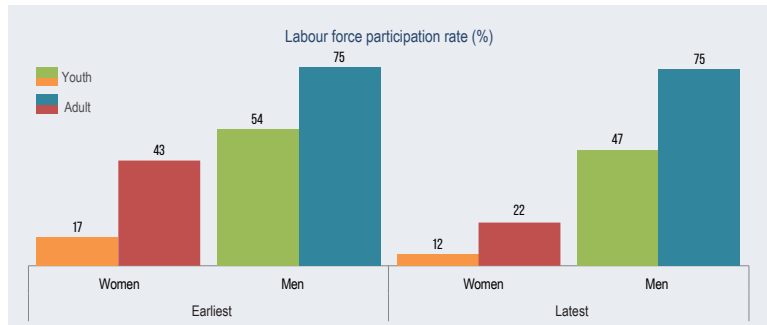
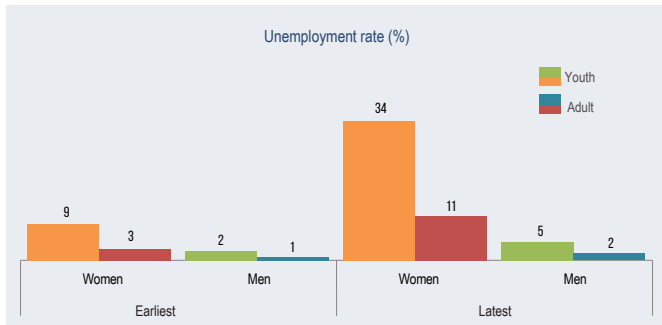
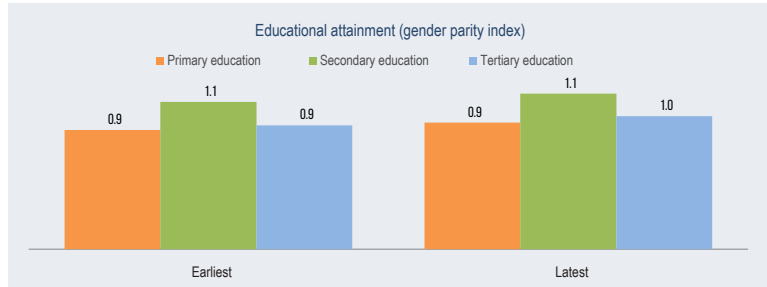
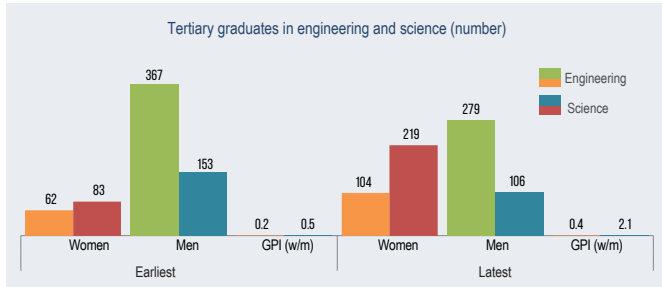
	Earliest	Latest
Dependency		
Child dependency ratio	48	66
Old age dependency ratio	7	6
Total dependency ratio	55	72

	Earliest	Latest
Maternal health		
Adolescent fertility rate	39	35
Total fertility rate	4	4
Maternal mortality ratio	54	54
Contraceptive use, any method (%)	56	58
Condom use (%)	1	0.2
Births attended by skilled health personnel (%)	56	81
Antenatal care coverage, At least one time (%)	47	85
Antenatal care coverage, At least four times (%)	38	75

	Earliest		Latest	
	Women	Men	Women	Men
Inequality				
Youth not in education, employment or training (%)	46	3	34	20

	Earliest		Latest	
	Women	Men	Women	Men
Literacy				
Youth illiteracy rate (%)	31	6	34	6
Adult illiteracy rate (%)	57	32	38	23

	Earliest		Latest	
	Women	Men	Women	Men
Work				
Youth employment to population ratio (%)	15	52
Adult employment to population ratio (%)	41	74	20	73

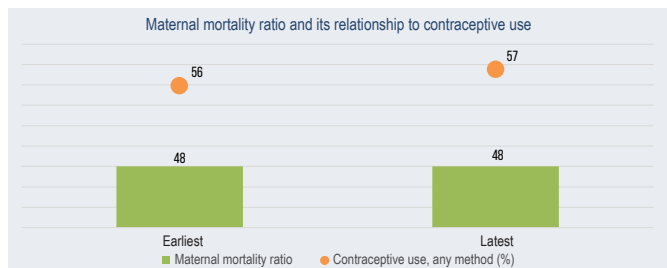
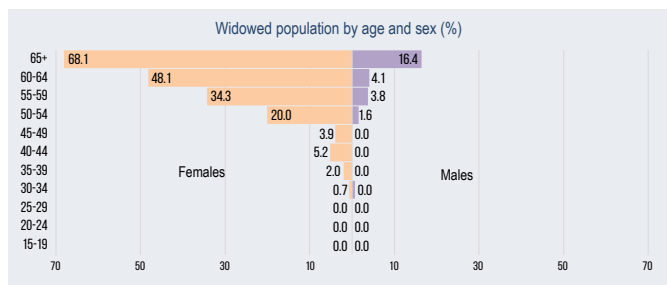




Fayoum



	Latest
Total population (number)	3928020
Total population (%)	4
Sex ratio (males per 100 females)	109
Female early marriage before age 18 (%)	38



	Earliest		Latest	
	Women	Men	Women	Men
Population				
Life expectancy at birth (years)	--	--	--	--
Population below 15 years (%)	30	31	40	40
Population aged 15-64 years (%)	65	64	57	57
Population aged 65+ (%)	5	4	3	3

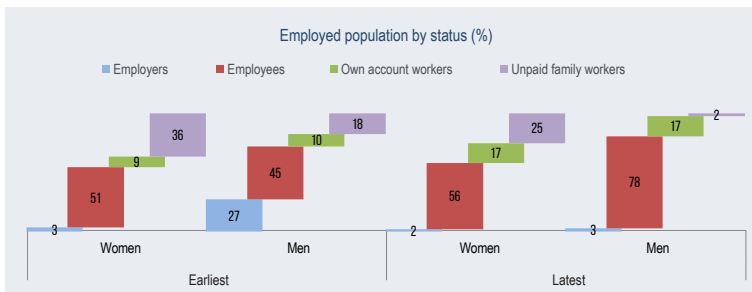
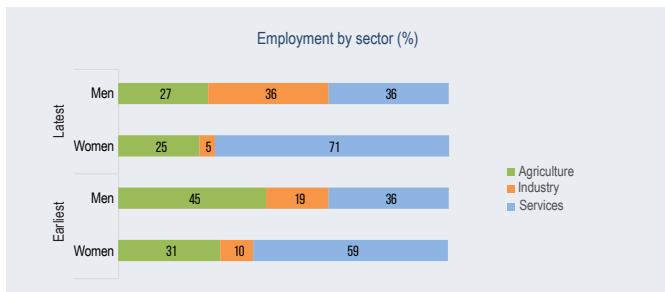
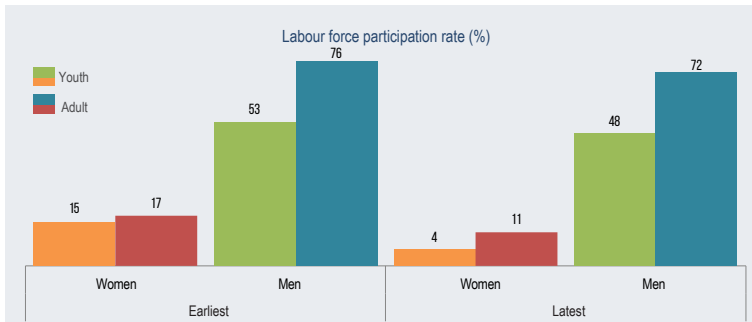
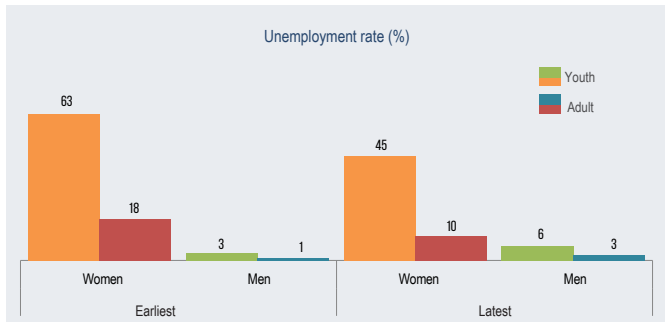
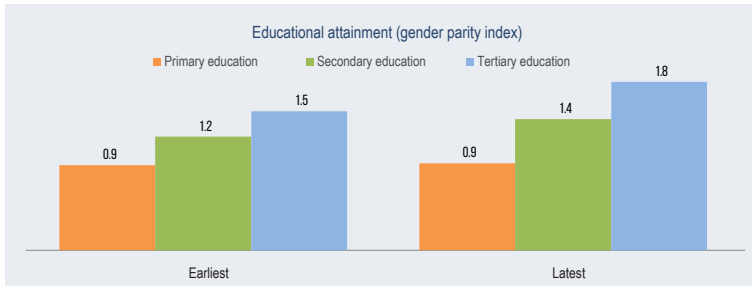
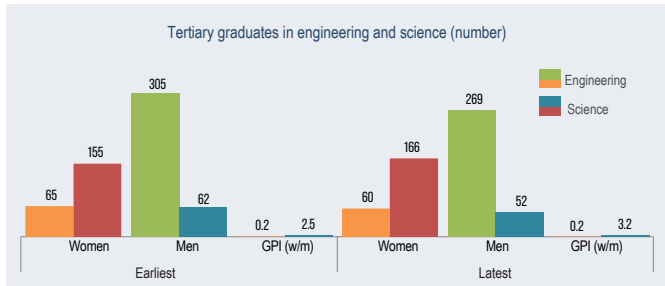
	Earliest	Latest
Dependency		
Child dependency ratio	48	70
Old age dependency ratio	7	6
Total dependency ratio	55	76

	Earliest	Latest
Maternal health		
Adolescent fertility rate	37	42
Total fertility rate	4	5
Maternal mortality ratio	48	48
Contraceptive use, any method (%)	56	57
Condom use (%)	0.4	0.1
Births attended by skilled health personnel (%)	45	85
Antenatal care coverage, At least one time (%)	47	90
Antenatal care coverage, At least four times (%)	37	76

	Earliest		Latest	
	Women	Men	Women	Men
Inequality				
Youth not in education, employment or training (%)	61	2	48	14

	Earliest		Latest	
	Women	Men	Women	Men
Literacy				
Youth illiteracy rate (%)	30	9	38	7
Adult illiteracy rate (%)	52	32	33	20

	Earliest		Latest	
	Women	Men	Women	Men
Work				
Youth employment to population ratio (%)	8	51	--	--
Adult employment to population ratio (%)	14	76	10	70

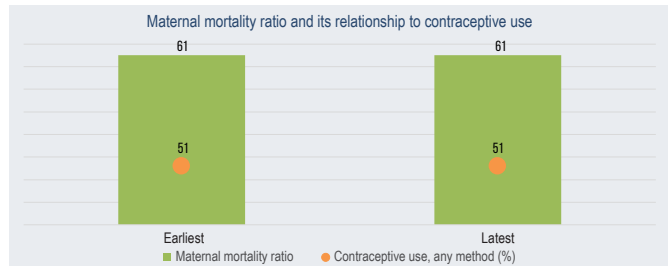
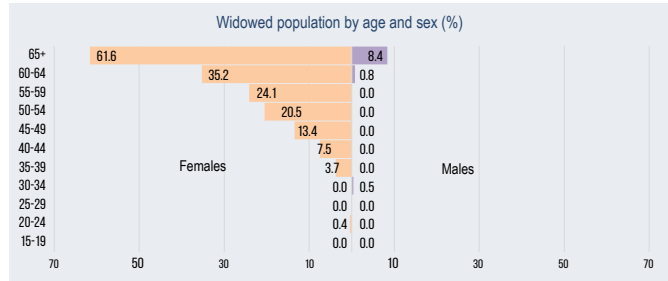




Menia



	Latest
Total population (number)	6077791
Total population (%)	6
Sex ratio (males per 100 females)	106
Female early marriage before age 18 (%)	21



	Earliest		Latest	
	Women	Men	Women	Men
Population
Life expectancy at birth (years)	30	31	37	37
Population below 15 years (%)	65	64	59	59
Population aged 15-64 years (%)	5	4	4	4

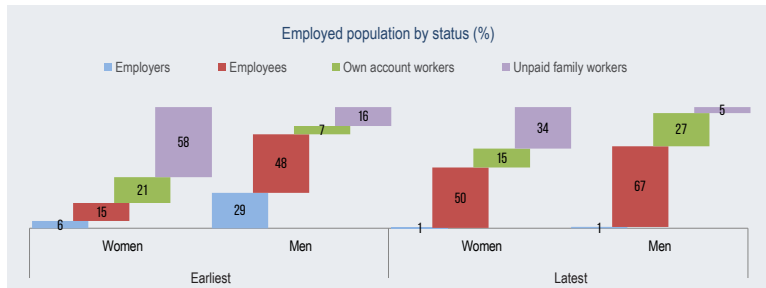
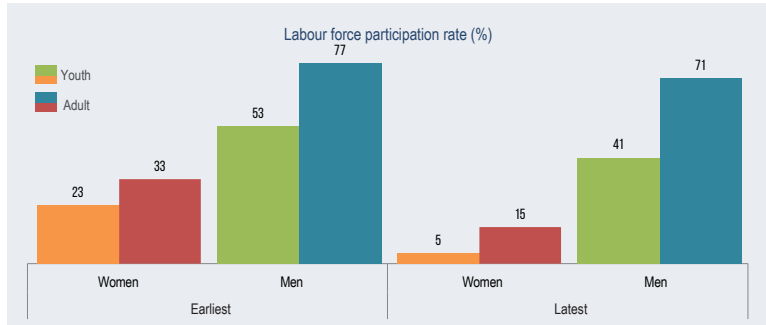
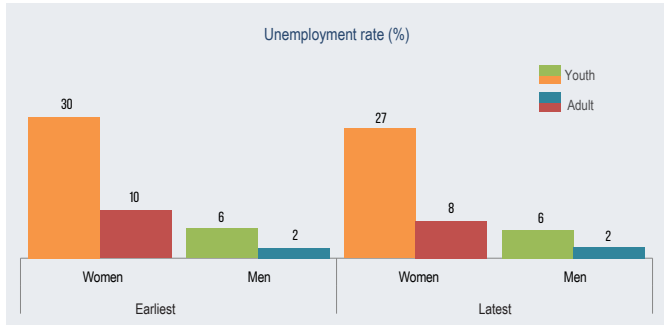
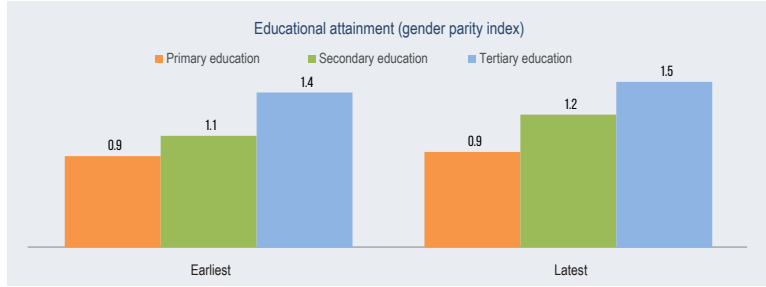
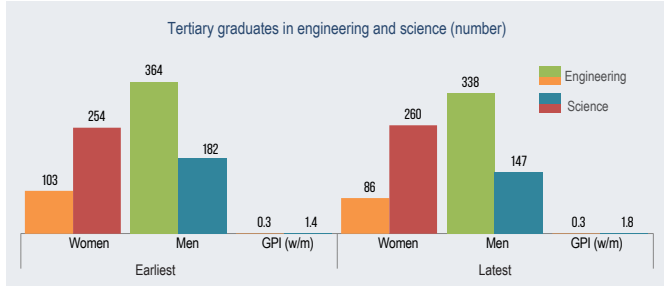
	Earliest	Latest
Dependency		
Child dependency ratio	48	63
Old age dependency ratio	7	7
Total dependency ratio	55	69

	Earliest	Latest
Maternal health		
Adolescent fertility rate	25	33
Total fertility rate	4	4
Maternal mortality ratio	61	61
Contraceptive use, any method (%)	51	51
Condom use (%)	1	0.4
Births attended by skilled health personnel (%)	51	74
Antenatal care coverage, At least one time (%)	58	81
Antenatal care coverage, At least four times (%)	44	70

	Earliest		Latest	
	Women	Men	Women	Men
Inequality				
Youth not in education, employment or training (%)	45	4	39	20

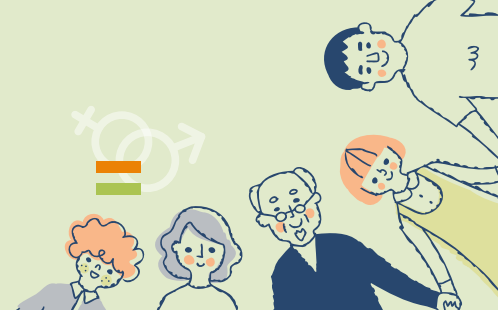
	Earliest		Latest	
	Women	Men	Women	Men
Literacy				
Youth illiteracy rate (%)	52	7	29	3
Adult illiteracy rate (%)	58	31	32	14

	Earliest		Latest	
	Women	Men	Women	Men
Work				
Youth employment to population ratio (%)	16	50
Adult employment to population ratio (%)	29	75	14	69

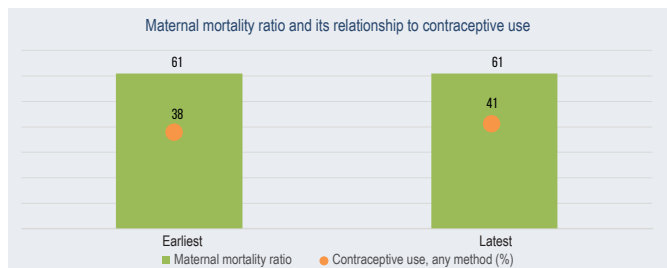
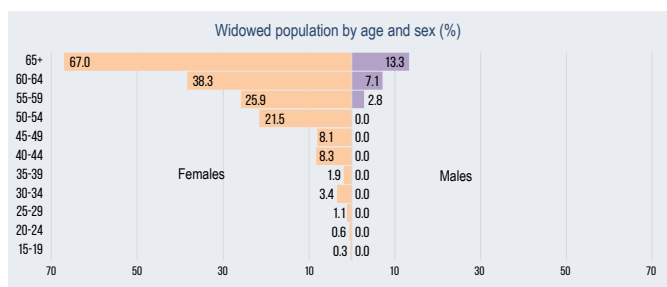




Asyout



	Latest
Total population (number)	4847735
Total population (%)	5
Sex ratio (males per 100 females)	107
Female early marriage before age 18 (%)	24



	Earliest		Latest	
	Women	Men	Women	Men
Population	---	---	---	---
Life expectancy at birth (years)	30	31	37	37
Population below 15 years (%)	65	64	60	60
Population aged 15-64 years (%)	5	4	3	4
Population aged 65+ (%)	5	4	3	4

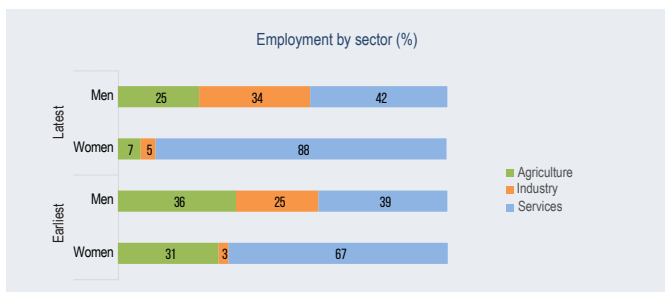
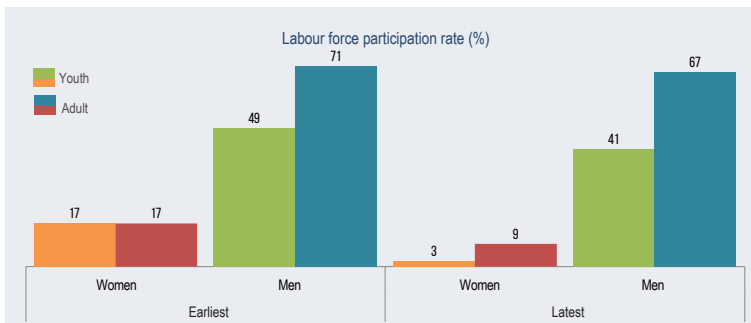
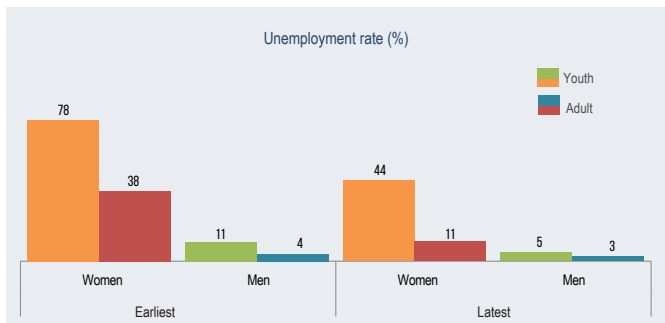
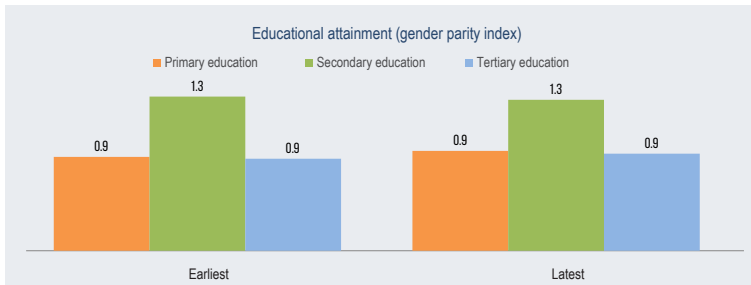
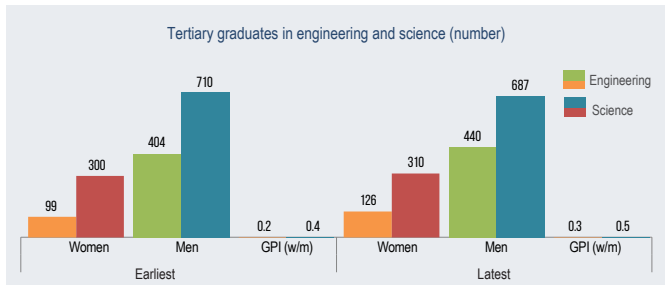
	Earliest	Latest
Dependency		
Child dependency ratio	48	61
Old age dependency ratio	7	6
Total dependency ratio	55	68

	Earliest	Latest
Maternal health		
Adolescent fertility rate	31	12
Total fertility rate	4	4
Maternal mortality ratio	61	61
Contraceptive use, any method (%)	38	41
Condom use (%)	0.0	0.1
Births attended by skilled health personnel (%)	57	82
Antenatal care coverage, At least one time (%)	62	87
Antenatal care coverage, At least four times (%)	46	77

	Earliest		Latest	
	Women	Men	Women	Men
Inequality				
Youth not in education, employment or training (%)	58	7	44	20

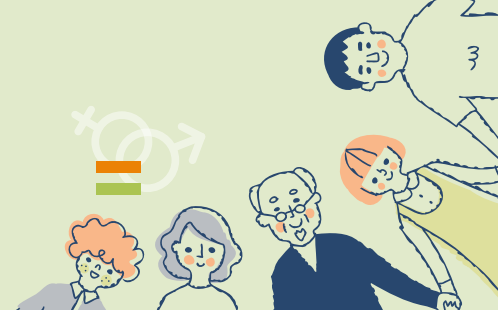
	Earliest		Latest	
	Women	Men	Women	Men
Literacy				
Youth illiteracy rate (%)	68	15	35	5
Adult illiteracy rate (%)	51	28	29	16

	Earliest		Latest	
	Women	Men	Women	Men
Work				
Youth employment to population ratio (%)	4	43	---	---
Adult employment to population ratio (%)	11	68	8	65

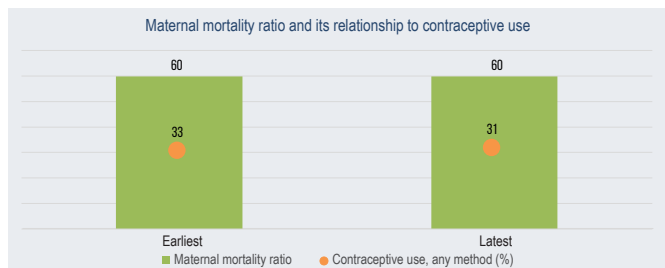
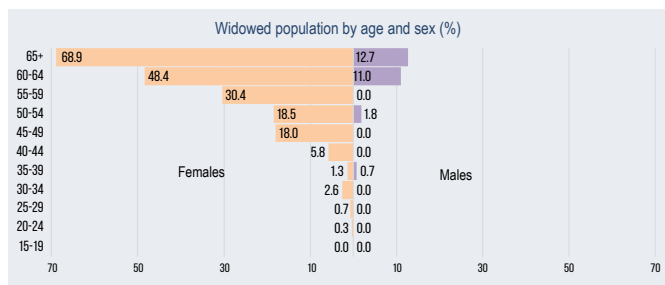




Suhag



	Latest
Total population (number)	5486409
Total population (%)	5
Sex ratio (males per 100 females)	107
Female early marriage before age 18 (%)	27



Population	Earliest		Latest	
	Women	Men	Women	Men
Life expectancy at birth (years)
Population below 15 years (%)	30	31	38	38
Population aged 15-64 years (%)	65	64	59	58
Population aged 65+ (%)	5	4	4	4

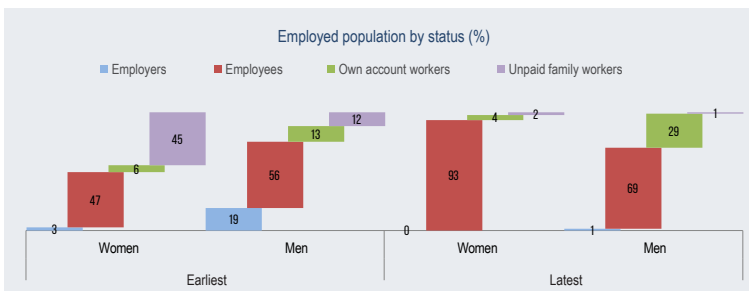
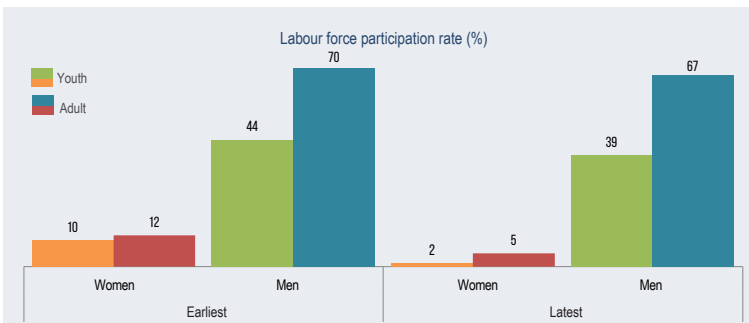
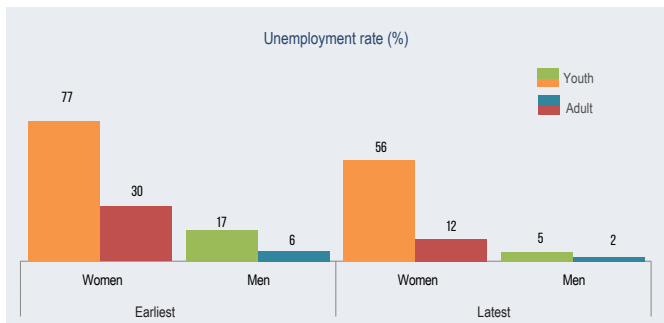
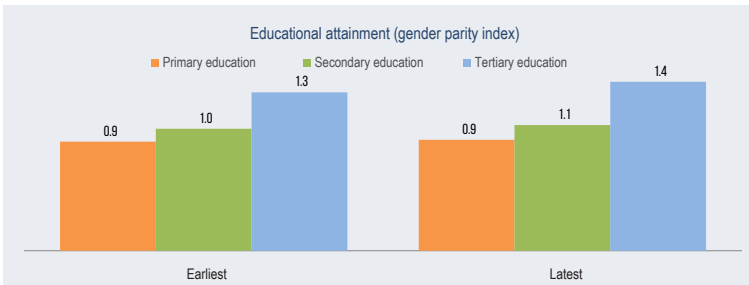
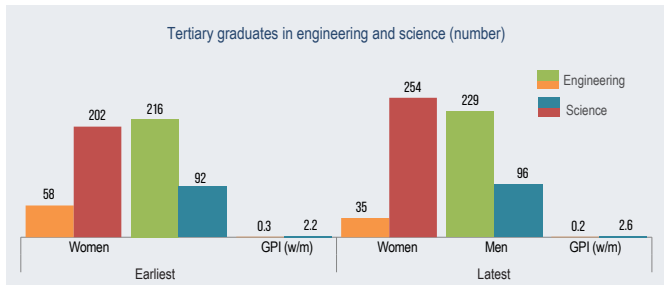
Dependency	Earliest	Latest
	Child dependency ratio	48
Old age dependency ratio	7	6
Total dependency ratio	55	71

Maternal health	Earliest	Latest
	Adolescent fertility rate	19
Total fertility rate	4	4
Maternal mortality ratio	60	60
Contraceptive use, any method (%)	33	31
Condom use (%)	1	1
Births attended by skilled health personnel (%)	55	87
Antenatal care coverage, At least one time (%)	51	87
Antenatal care coverage, At least four times (%)	35	70

Inequality	Earliest		Latest	
	Women	Men	Women	Men
Youth not in education, employment or training (%)	55	7	48	22

Literacy	Earliest		Latest	
	Women	Men	Women	Men
Youth illiteracy rate (%)	44	12	57	14
Adult illiteracy rate (%)	54	23	34	17

Work	Earliest		Latest	
	Women	Men	Women	Men
Youth employment to population ratio (%)	2	38
Adult employment to population ratio (%)	8	67	5	65

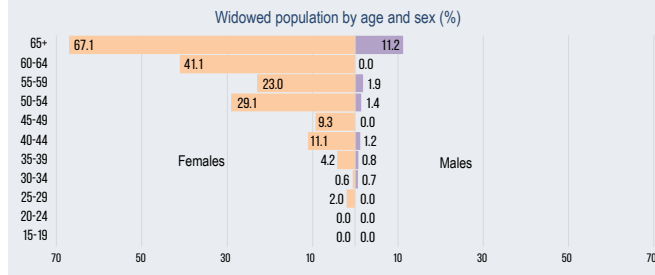




Qena



	Latest
Total population (number)	3492867
Total population (%)	3
Sex ratio (males per 100 females)	105
Female early marriage before age 18 (%)	25



	Earliest		Latest	
	Women	Men	Women	Men
Population
Life expectancy at birth (years)
Population below 15 years (%)	30	31	35	36
Population aged 15-64 years (%)	65	64	61	60
Population aged 65+ (%)	5	4	4	4

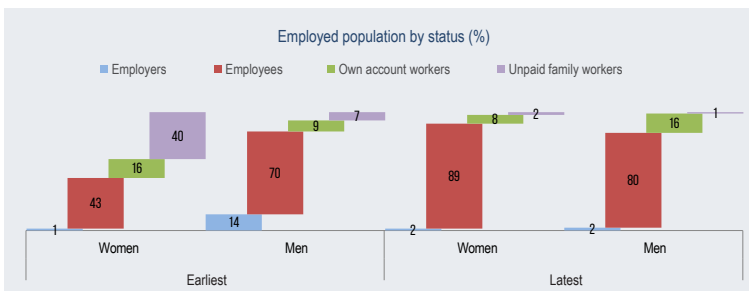
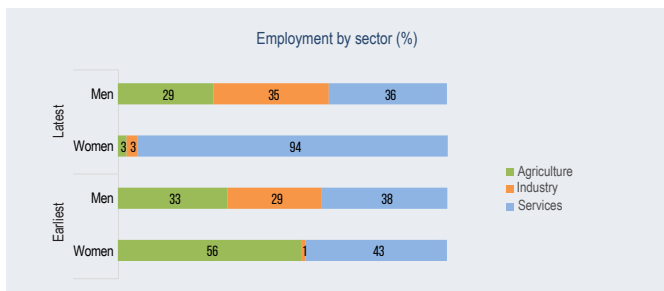
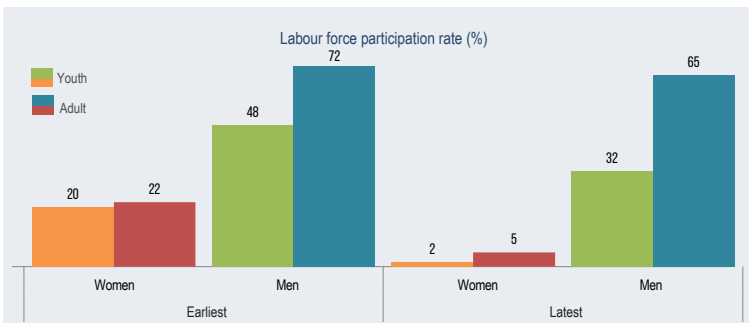
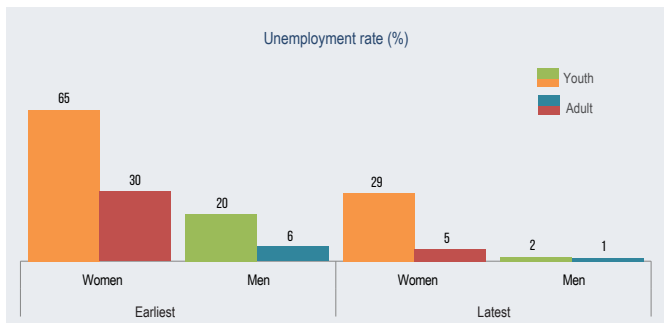
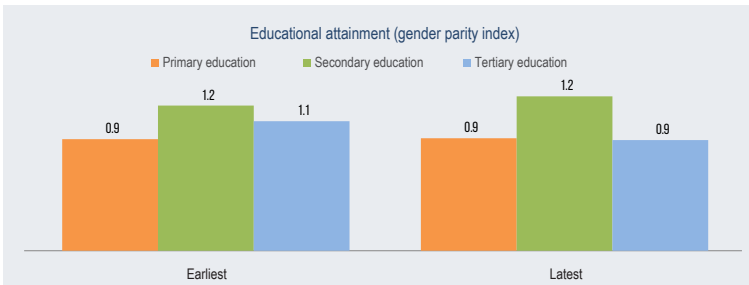
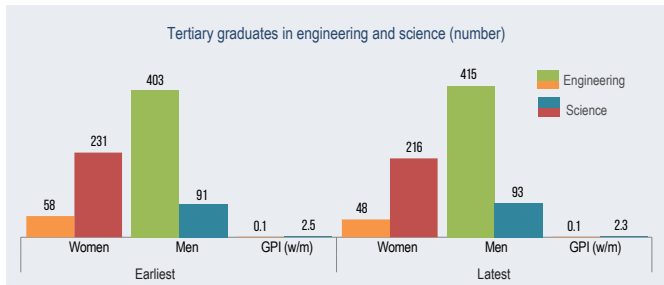
	Earliest	Latest
Dependency		
Child dependency ratio	48	59
Old age dependency ratio	7	7
Total dependency ratio	55	66

	Earliest	Latest
Maternal health		
Adolescent fertility rate	13	25
Total fertility rate	3	4
Maternal mortality ratio	60	60
Contraceptive use, any method (%)	47	38
Condom use (%)	1	0.2
Births attended by skilled health personnel (%)	71	91
Antenatal care coverage, At least one time (%)	56	81
Antenatal care coverage, At least four times (%)	48	73

	Earliest		Latest	
	Women	Men	Women	Men
Inequality				
Youth not in education, employment or training (%)	53	8	46	19

	Earliest		Latest	
	Women	Men	Women	Men
Literacy				
Youth illiteracy rate (%)	53	6	70	3
Adult illiteracy rate (%)	48	22	28	12

	Earliest		Latest	
	Women	Men	Women	Men
Work				
Youth employment to population ratio (%)	9	41
Adult employment to population ratio (%)	17	68	5	64

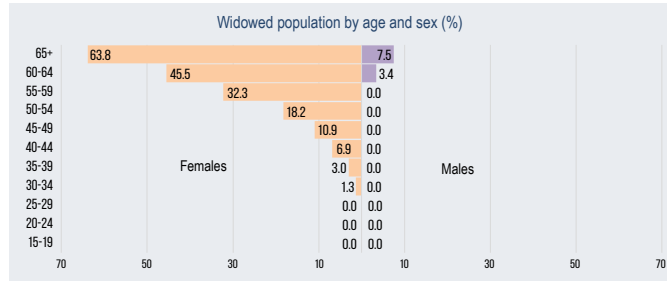




Aswan



	Latest
Total population (number)	1600210
Total population (%)	2
Sex ratio (males per 100 females)	103
Female early marriage before age 18 (%)	21



	Earliest		Latest	
	Women	Men	Women	Men
Population				
Life expectancy at birth (years)
Population below 15 years (%)	30	31	33	34
Population aged 15-64 years (%)	65	64	63	62
Population aged 65+ (%)	5	4	4	4

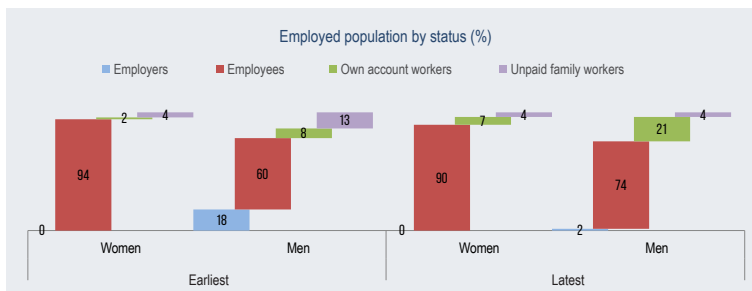
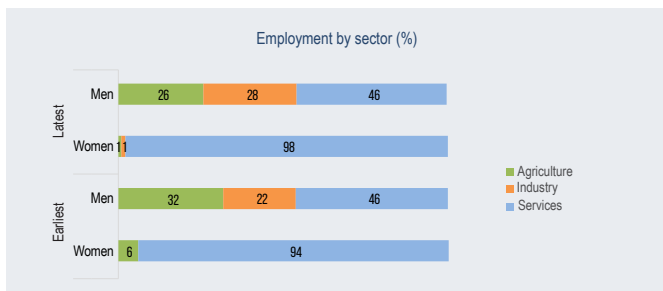
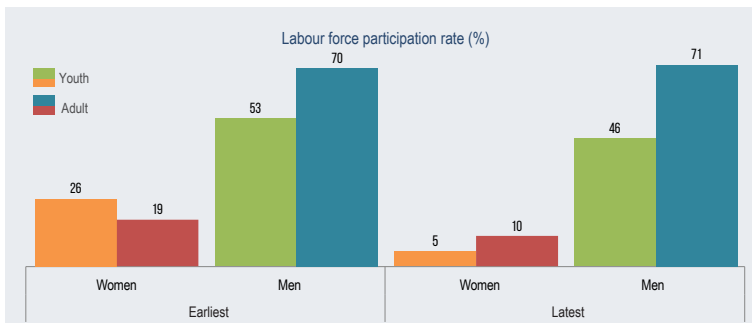
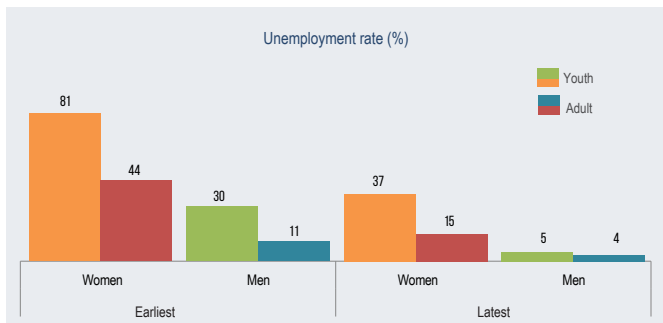
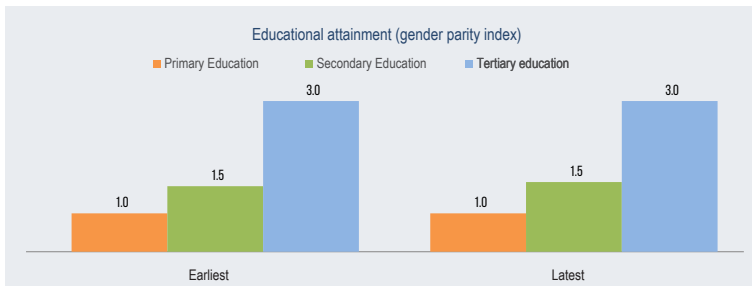
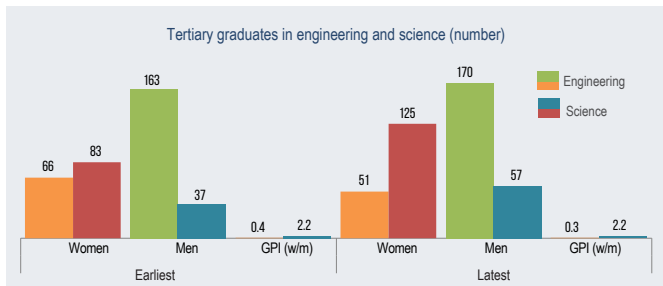
	Earliest	Latest
Dependency		
Child dependency ratio	48	54
Old age dependency ratio	7	6
Total dependency ratio	55	60

	Earliest	Latest
Maternal health		
Adolescent fertility rate	14	17
Total fertility rate	3	4
Maternal mortality ratio	37	37
Contraceptive use, any method (%)	49	50
Condom use (%)	1	1
Births attended by skilled health personnel (%)	90	98
Antenatal care coverage, At least one time (%)	79	90
Antenatal care coverage, At least four times (%)	66	86

	Earliest		Latest	
	Women	Men	Women	Men
Inequality				
Youth not in education, employment or training (%)	50	21	34	22

	Earliest		Latest	
	Women	Men	Women	Men
Literacy				
Youth illiteracy rate (%)	75	36	25	3
Adult illiteracy rate (%)	33	13	20	11

	Earliest		Latest	
	Women	Men	Women	Men
Work				
Youth employment to population ratio (%)	3	33
Adult employment to population ratio (%)	8	57	9	69

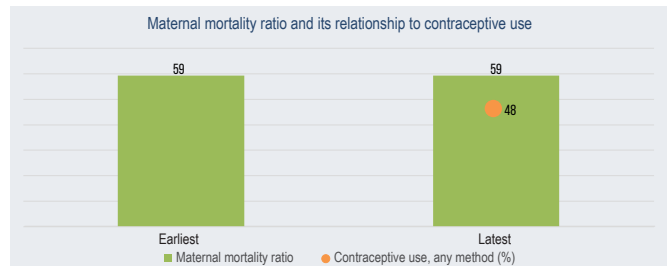
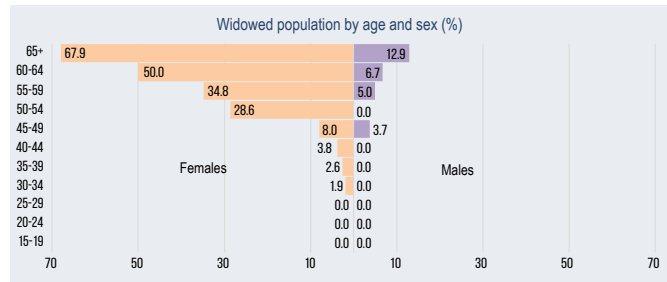




Luxor



	Latest
Total population (number)	1352818
Total population (%)	1
Sex ratio (males per 100 females)	106
Female early marriage before age 18 (%)	17



	Earliest		Latest	
	Women	Men	Women	Men
Population				
Life expectancy at birth (years)	--	--	--	--
Population below 15 years (%)	30	31	32	32
Population aged 15-64 years (%)	65	64	64	63
Population aged 65+ (%)	5	4	4	5

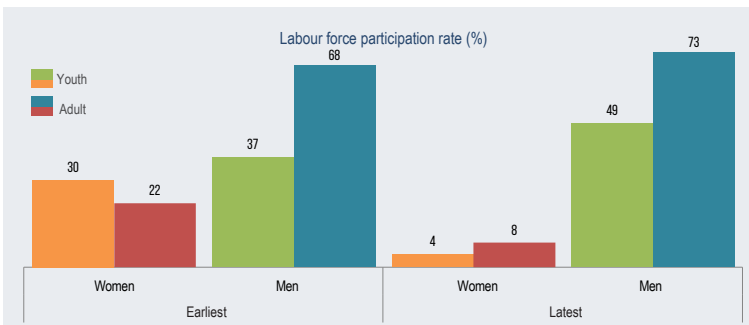
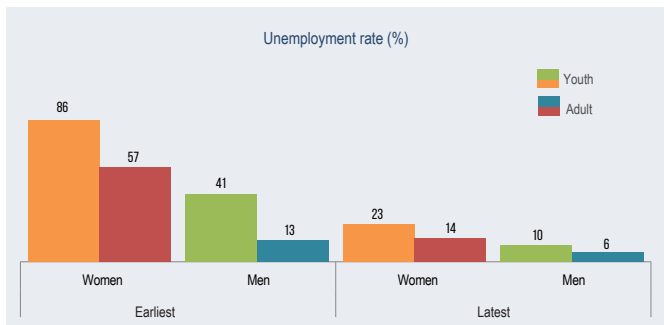
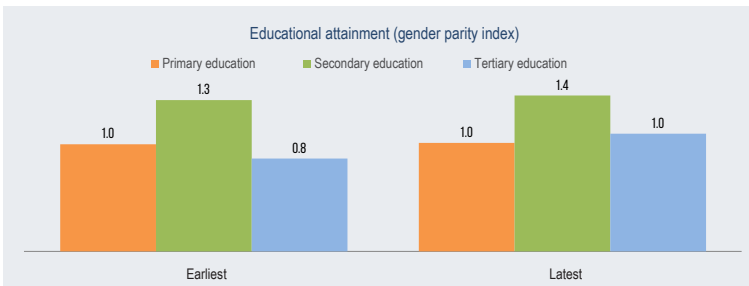
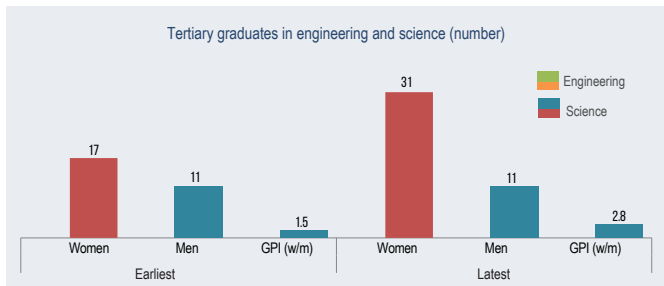
	Earliest	Latest
Dependency		
Child dependency ratio	48	50
Old age dependency ratio	7	7
Total dependency ratio	55	57

	Earliest	Latest
Maternal health		
Adolescent fertility rate	-	19
Total fertility rate	-	3
Maternal mortality ratio	59	59
Contraceptive use, any method (%)	-	48
Condom use (%)	-	1
Births attended by skilled health personnel (%)	-	98
Antenatal care coverage, At least one time (%)	-	88
Antenatal care coverage, At least four times (%)	-	84

	Earliest		Latest	
	Women	Men	Women	Men
Inequality				
Youth not in education, employment or training (%)	48	8	44	22

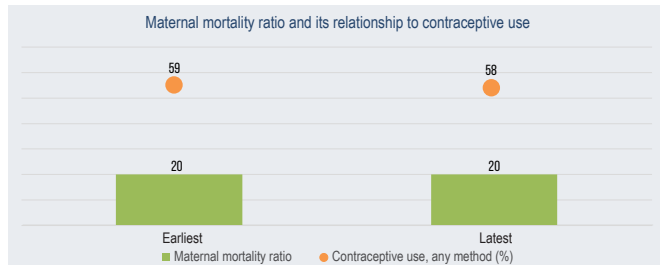
	Earliest		Latest	
	Women	Men	Women	Men
Literacy				
Youth illiteracy rate (%)	69	9	75	14
Adult illiteracy rate (%)	29	6	22	12

	Earliest		Latest	
	Women	Men	Women	Men
Work				
Youth employment to population ratio (%)	5	30	--	--
Adult employment to population ratio (%)	11	65	7	68





Red Sea



	Earliest		Latest	
	Women	Men	Women	Men
Population				
Life expectancy at birth (years)	--	--	--	--
Population below 15 years (%)	30	31	37	36
Population aged 15-64 years (%)	65	64	61	61
Population aged 65+ (%)	5	4	2	3

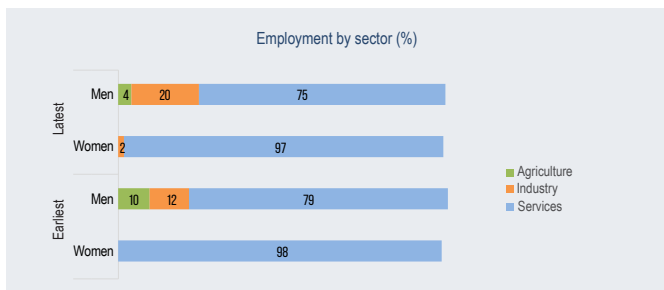
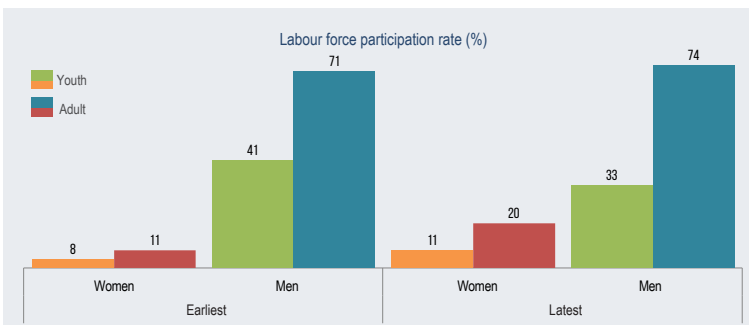
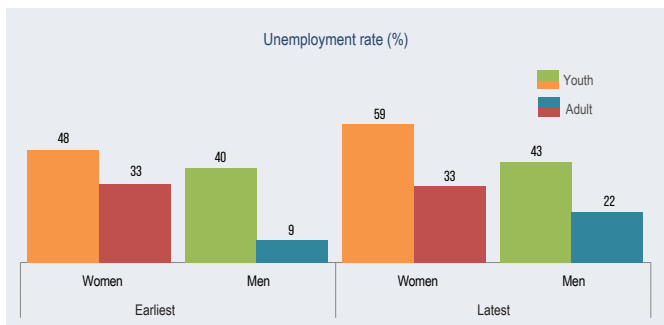
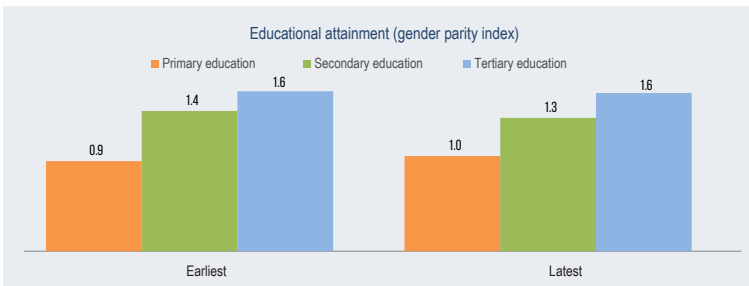
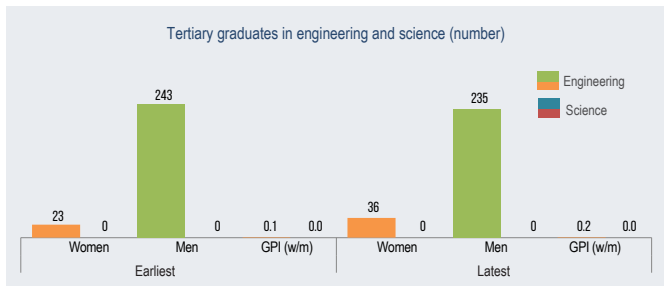
	Earliest	Latest
Dependency		
Child dependency ratio	48	59
Old age dependency ratio	7	4
Total dependency ratio	55	64

	Earliest	Latest
Maternal health		
Adolescent fertility rate	19	4
Total fertility rate	3	3
Maternal mortality ratio	20	20
Contraceptive use, any method (%)	59	58
Condom use (%)	2	3
Births attended by skilled health personnel (%)	91	94
Antenatal care coverage, At least one time (%)	95	93
Antenatal care coverage, At least four times (%)	93	86

	Earliest		Latest	
	Women	Men	Women	Men
Inequality				
Youth not in education, employment or training (%)	45	13	45	30

	Earliest		Latest	
	Women	Men	Women	Men
Literacy				
Youth illiteracy rate (%)	87	43	25	36
Adult illiteracy rate (%)	17	9	8	4

	Earliest		Latest	
	Women	Men	Women	Men
Work				
Youth employment to population ratio (%)	2	32	--	--
Adult employment to population ratio (%)	6	67	13	58

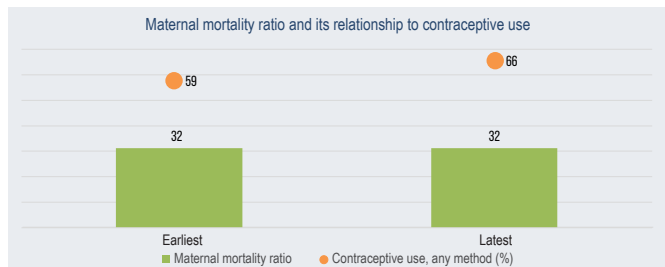
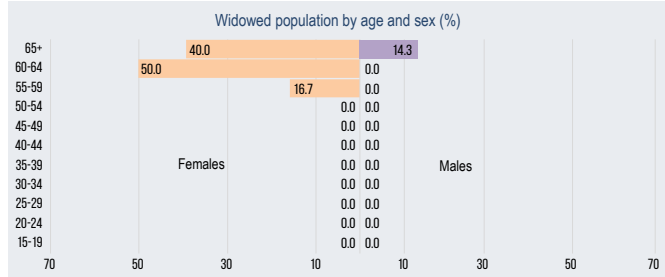




El-Waadi El-Gidid



	Latest
Total population (number)	259174
Total population (%)	0.3
Sex ratio (males per 100 females)	105
Female early marriage before age 18 (%)	21



	Earliest		Latest	
	Women	Men	Women	Men
Population
Life expectancy at birth (years)	30	31	33	33
Population below 15 years (%)	65	64	63	62
Population aged 15-64 years (%)	5	4	4	5

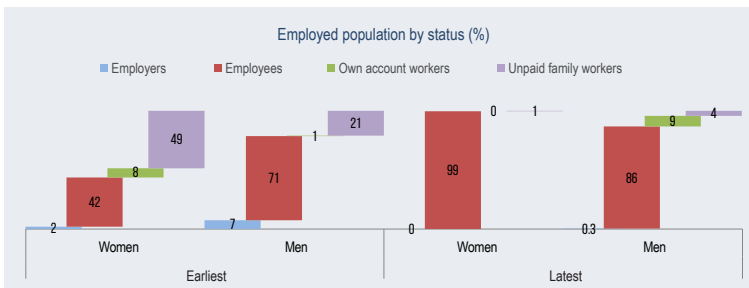
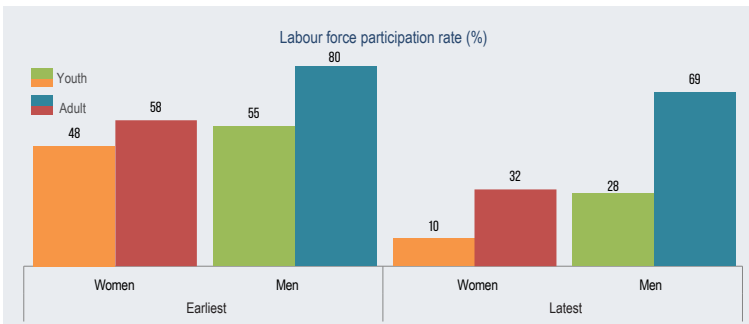
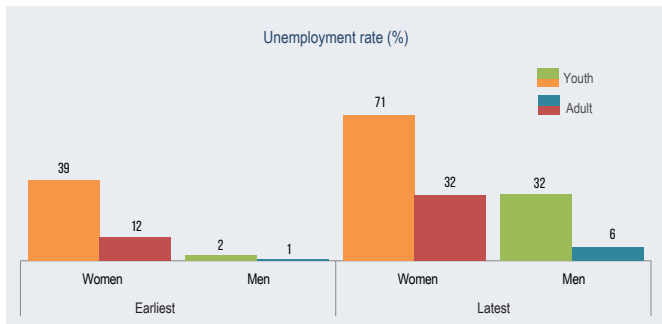
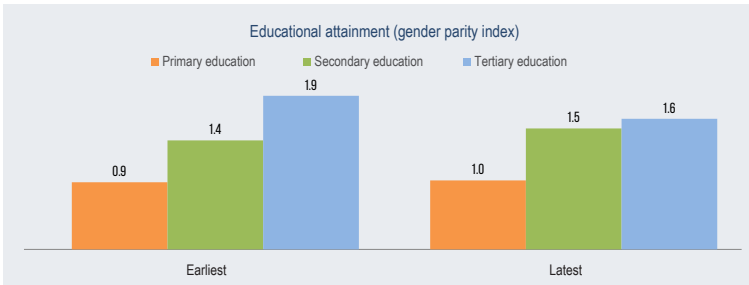
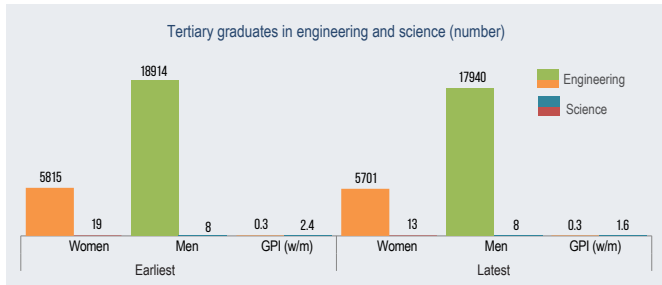
	Earliest	Latest
Dependency		
Child dependency ratio	48	53
Old age dependency ratio	7	7
Total dependency ratio	55	60

	Earliest	Latest
Maternal health		
Adolescent fertility rate	0.0	18
Total fertility rate	3	4
Maternal mortality ratio	32	32
Contraceptive use, any method (%)	59	66
Condom use (%)	2	0.0
Births attended by skilled health personnel (%)	80	98
Antenatal care coverage, At least one time (%)	77	96
Antenatal care coverage, At least four times (%)	64	90

	Earliest		Latest	
	Women	Men	Women	Men
Inequality				
Youth not in education, employment or training (%)	43	8	25	12

	Earliest		Latest	
	Women	Men	Women	Men
Literacy				
Youth illiteracy rate (%)	100	7	0.0	6
Adult illiteracy rate (%)	21	12	11	4

	Earliest		Latest	
	Women	Men	Women	Men
Work				
Youth employment to population ratio (%)	16	47
Adult employment to population ratio (%)	45	77	21	64

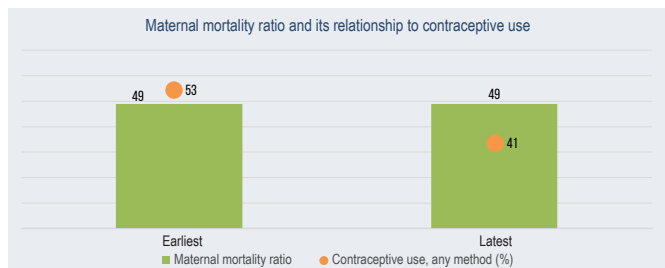
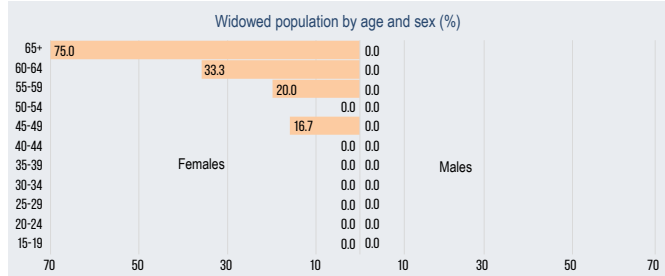




Matrouh



	Latest
Total population (number)	511545
Total population (%)	1
Sex ratio (males per 100 females)	109
Female early marriage before age 18 (%)	30



	Earliest		Latest	
	Women	Men	Women	Men
Population				
Life expectancy at birth (years)
Population below 15 years (%)	30	31	42	40
Population aged 15-64 years (%)	65	64	56	58
Population aged 65+ (%)	5	4	2	2

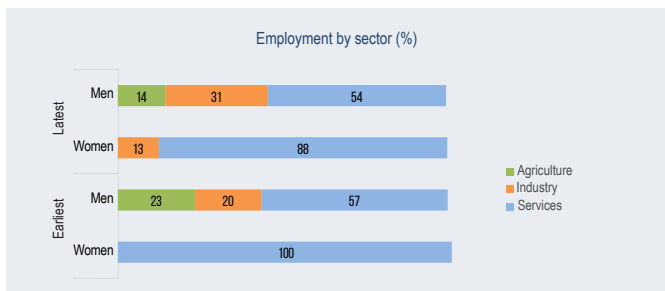
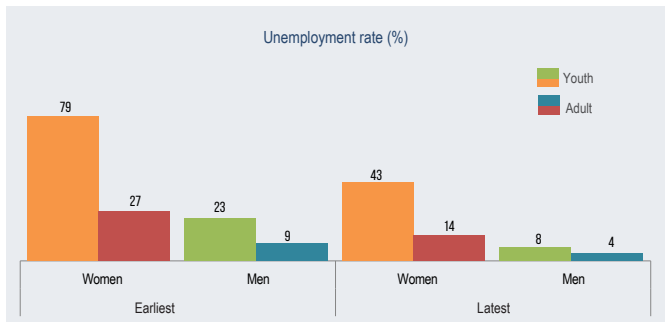
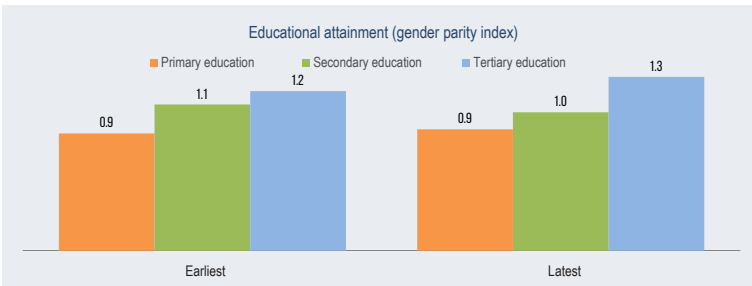
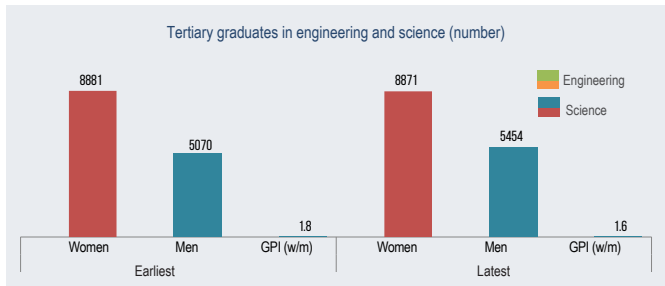
	Earliest	Latest
Dependency		
Child dependency ratio	48	73
Old age dependency ratio	7	3
Total dependency ratio	55	76

	Earliest	Latest
Maternal health		
Adolescent fertility rate	15	55
Total fertility rate	3	5
Maternal mortality ratio	49	49
Contraceptive use, any method (%)	53	41
Condom use (%)	1	1
Births attended by skilled health personnel (%)	56	78
Antenatal care coverage, At least one time (%)	50	72
Antenatal care coverage, At least four times (%)	37	60

	Earliest		Latest	
	Women	Men	Women	Men
Inequality				
Youth not in education, employment or training (%)	30	9	60	18

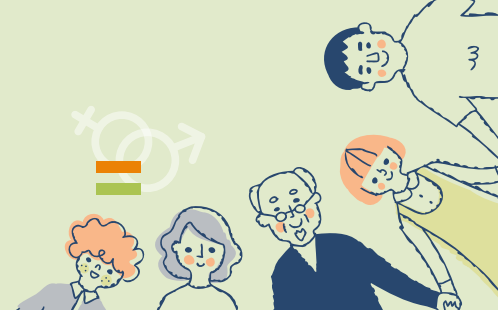
	Earliest		Latest	
	Women	Men	Women	Men
Literacy				
Youth illiteracy rate (%)	76	22	0.0	12
Adult illiteracy rate (%)	23	3	47	21

	Earliest		Latest	
	Women	Men	Women	Men
Work				
Youth employment to population ratio (%)	8	41
Adult employment to population ratio (%)	14	78	4	63

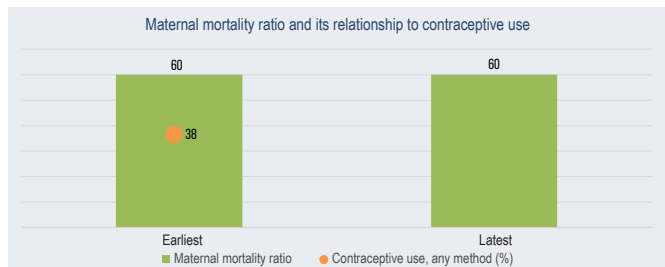
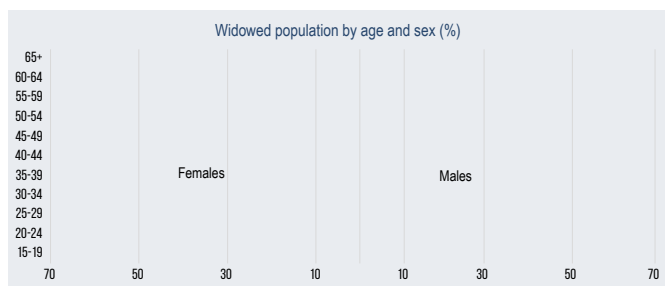




North Sinai



	Latest
Total population (number)	492555
Total population (%)	0.5
Sex ratio (males per 100 females)	104
Female early marriage before age 18 (%)	-



	Earliest		Latest	
	Women	Men	Women	Men
Population
Life expectancy at birth (years)
Population below 15 years (%)	30	31	39	39
Population aged 15-64 years (%)	65	64	59	58
Population aged 65+ (%)	5	4	2	2

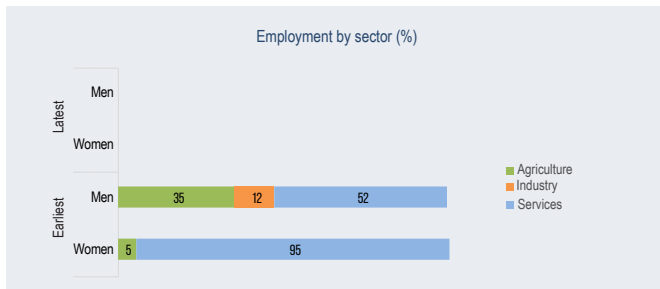
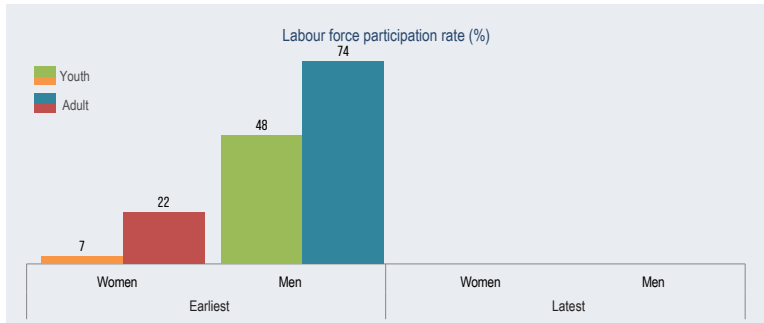
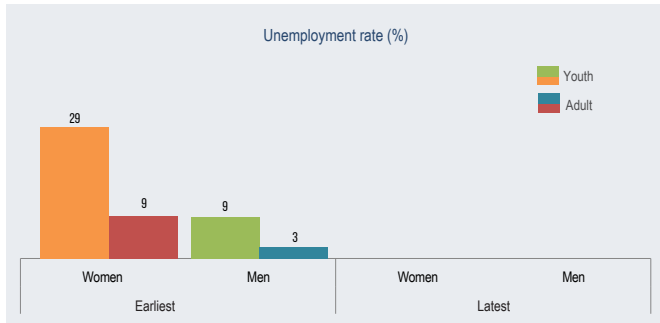
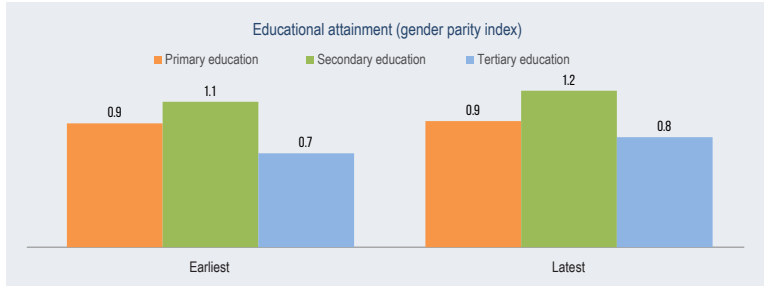
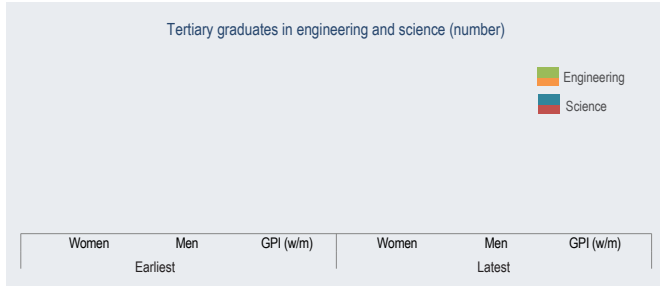
	Earliest	Latest
Dependency		
Child dependency ratio	48	67
Old age dependency ratio	7	4
Total dependency ratio	55	71

	Earliest	Latest
Maternal health		
Adolescent fertility rate	16	-
Total fertility rate	4	-
Maternal mortality ratio	60	60
Contraceptive use, any method (%)	38	-
Condom use (%)	2	-
Births attended by skilled health personnel (%)	81	-
Antenatal care coverage, At least one time (%)	79	-
Antenatal care coverage, At least four times (%)	73	-

	Earliest		Latest	
	Women	Men	Women	Men
Inequality				
Youth not in education, employment or training (%)	47	6	35	14

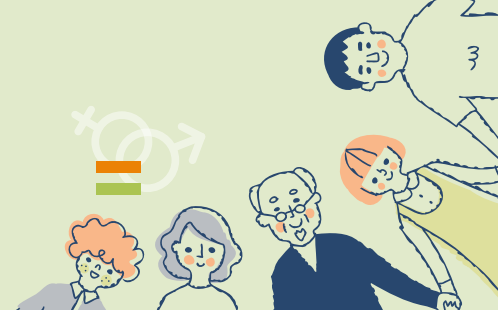
	Earliest		Latest	
	Women	Men	Women	Men
Literacy				
Youth illiteracy rate (%)
Adult illiteracy rate (%)

	Earliest		Latest	
	Women	Men	Women	Men
Work				
Youth employment to population ratio (%)	2	42
Adult employment to population ratio (%)	19	71

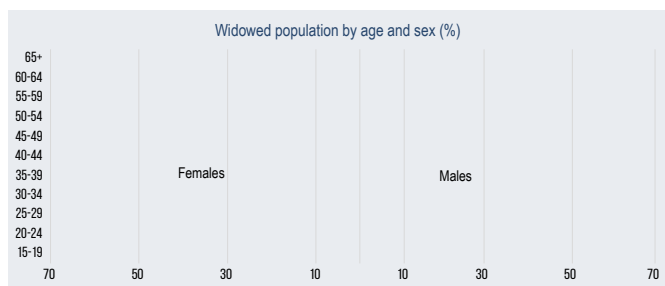




South Sinai



	Latest
Total population (number)	112672
Total population (%)	0.1
Sex ratio (males per 100 females)	106
Female early marriage before age 18 (%)	-



	Earliest		Latest	
	Women	Men	Women	Men
Population
Life expectancy at birth (years)	30	31	39	40
Population below 15 years (%)	65	64	60	58
Population aged 15-64 years (%)	5	4	1	2

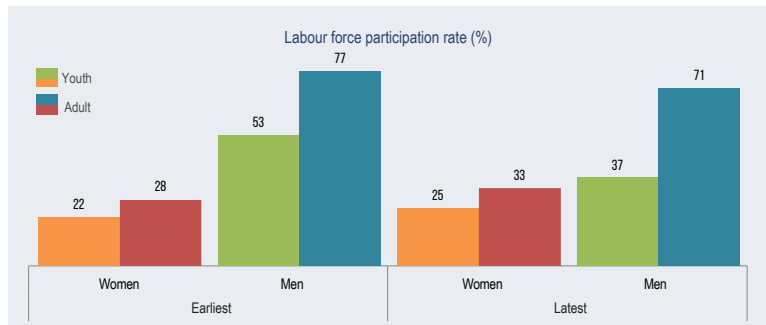
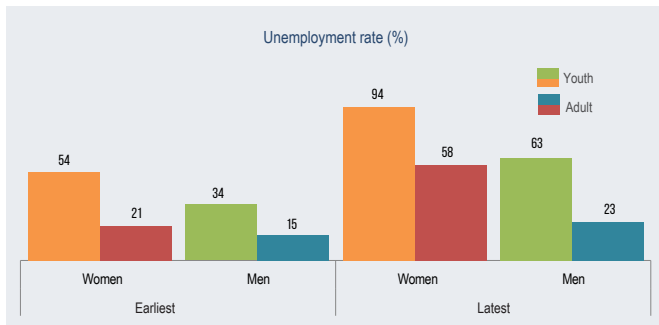
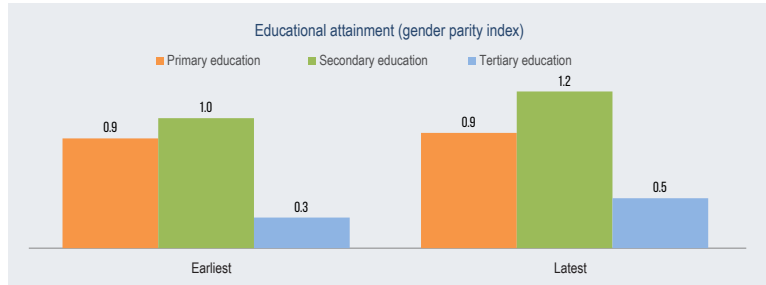
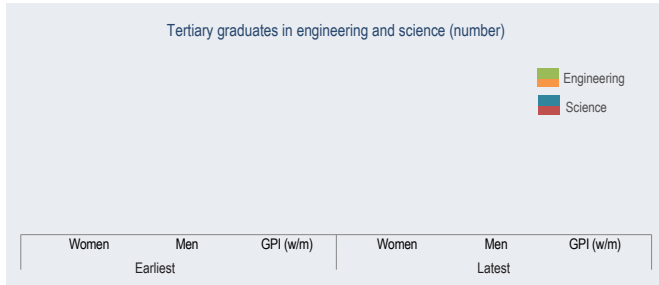
	Earliest	Latest
Dependency		
Child dependency ratio	48	67
Old age dependency ratio	7	3
Total dependency ratio	55	70

	Earliest	Latest
Maternal health		
Adolescent fertility rate	9	-
Total fertility rate	3	-
Maternal mortality ratio	30	30
Contraceptive use, any method (%)	43	-
Condom use (%)	3	-
Births attended by skilled health personnel (%)	80	-
Antenatal care coverage, At least one time (%)	80	-
Antenatal care coverage, At least four times (%)	79	-

	Earliest		Latest	
	Women	Men	Women	Men
Inequality				
Youth not in education, employment or training (%)	32	9	53	20

	Earliest		Latest	
	Women	Men	Women	Men
Literacy				
Youth illiteracy rate (%)	95	83	50	73
Adult illiteracy rate (%)	34	12	22	8

	Earliest		Latest	
	Women	Men	Women	Men
Work				
Youth employment to population ratio (%)	11	45	-	-
Adult employment to population ratio (%)	22	71	14	55



o Definitions



Governorates or cities information	
Sex ratio (males per 100 females)	Sex ratio is the demographic concept that measures the proportion of males to females in a given population. It is usually measured as the number of males per 100 females.
Female early marriage before age 18 (%)	Proportion of women aged 20-24 years who were married or in a union before age 18.
Population and dependency	
Life expectancy at birth (years)	The average number of years that a newborn could expect to live, if he or she were to pass through life exposed to the sex- and age-specific death rates prevailing at the time of his or her birth, for a specific year, in a given country, territory or geographic area.
Population below 15 years (%)	Percentage of the population in the country or area below age 15, calculated separately for each sex.
Population aged 15-64 years (%)	Percentage of the population in the country or area aged 15-64 years, calculated separately for each sex.
Population aged 65+ (%)	Percentage of the population in the country or area aged 65 and above, calculated separately for each sex.

Child dependency ratio	Ratio of the population aged 0-14 to the population aged 15-64. Ratio is presented as number of dependants per 100 persons of working age (15-64).
Old-age dependency ratio	Ratio of the population aged 65 years or above to the population aged 15-64. Ratio is presented as number of dependants per 100 persons of working age (15-64).
Total dependency ratio	Ratio of the combined child population (0-14) and old-age population (65 and above) to the working-age population (15-64). It is expressed as the number of dependents for every 100 workers.
Widowed population by age and sex (%)	Widowed indicates people whose last marriage ended with the death of their spouse and they had not remarried distributed by age group in percentage. The married widow survivor is counted out of all married with alive spouses in each age group for each sex. The total for each sex should not be 100 per cent.
Maternal health	
Adolescent fertility (15-19 years)	Adolescent birth rate measures the annual number of births to women aged 15-19 years per 1,000 women in that age group. It represents the risk of childbearing among adolescent women aged 15-19. It is also referred to as the age-specific fertility rate for women aged 15-19. Adolescent birth rate is generally computed as a ratio. The numerator is the number of live births to women aged 15-19, and the denominator an estimate of exposure to childbearing by women aged 15-19. The numerator and the denominator are calculated differently for civil registration, survey and census data.
Total fertility rate	Average number of live births a woman would have by age 50 if she were subject, throughout her life, to the age-specific fertility rates observed in a given year. Its calculation assumes that there is no mortality. It is expressed as children per woman.

Maternal mortality ratio	Maternal Mortality Ratio (MMR) is the annual number of female deaths from any cause related to or aggravated by pregnancy or its management (excluding accidental or incidental causes) during pregnancy and childbirth or within 42 days of termination of pregnancy, irrespective of the duration and site of the pregnancy, for a specified year (expressed per 100,000 live births).
Contraceptive use, any method (%)	Contraceptive prevalence rate is the proportion of women of reproductive age who are using (or whose partner is using) a contraceptive method at a given point in time.
Condom use (%)	
Births attended by skilled health personnel (%)	Percentage of births attended by skilled health personnel (doctors, nurses or midwives).
Antenatal care coverage, at least one time (%)	Percentage of women aged 15-49 with a live birth in a given time period that received antenatal care provided by skilled health personnel at least once during their pregnancy.
Antenatal care coverage, at least four times (%)	Percentage of women aged 15-49 with a live birth in a given time period that received antenatal care by any provider four or more times during their pregnancy.
Inequality	
Youth not in education, employment or training (%)	This indicator conveys the proportion of youth (aged 15-24) not in education, employment or training (also known as "the youth NEET rate"). (Unemployed youth + Youth outside the labour force) - (Unemployment youth in education or training + Youth outside the labour force in education or training)/Youth population *100.
Youth illiteracy rate (%)	Percentage of the youth aged 15-24 which cannot both read and write with understanding over total population in the same age class.

Adult illiteracy rate (%)	Percentage of the population aged 15 and above which cannot both read and write with understanding over total population in the same age class.
Youth unemployment rate (%)	Number of unemployed youth people divided by the total youth labour multiplied by 100.
Adult unemployment rate (%)	Number of unemployed people divided by the total labour multiplied by 100.
Education	
Gender Parity Index in education	Gender Parity Index (GPI) reflects females' level of access to education compared to that of males. This is calculated for each school phase. ESCWA calculates GPI as the ratio of girls to boys.
Tertiary graduates in engineering (number)	Engineering, manufacturing and construction: include engineering and engineering trades, manufacturing and production process, architecture and building according to ISCED 5A.
Tertiary graduates in science (number)	Science include: life sciences, physical sciences, mathematics and statistics according to ISCED 5B.
Work	
Youth labour force participation rate (%)	$\text{Employed youth} + \text{Unemployed youth} / \text{Total youth population} * 100.$
Adult labour force participation rate (%)	Labour force participation rate is a measure of the proportion of a country's working-age population that engages actively in the labour market, either by working or looking for work. It provides an indication of the relative size of the supply of labour available to engage in the production of goods and services. The labour force participation rate is calculated by expressing the number of persons in the labour force as a percentage of the working-age population.

Youth employment to population ratio (%)	Youth employed/Total youth population *100.																				
Adult employment to population ratio (%)	Employment-to-population ratio is defined as the proportion of a country's working-age population that is employed. It is calculated by dividing the number of persons in employment as a percentage of the population for the corresponding sex and age group (either working-age or youth). A high ratio means that a large proportion of a country's population is employed, while a low ratio means that a large share of the population is not involved directly in market-related activities, because they are either unemployed or (more likely) out of the labour force altogether.																				
Employment by sector																					
Employment in: - Agriculture (%) - Industry (%) - Services (%)	<p>There are three broad sectors – agriculture, industry and services – each expressing a percentage of total employment. The indicator shows employment growth and decline on a broad sectoral scale, while highlighting differences in trends and levels between developed and developing economies. The agriculture, industry and services sectors are defined by the International Standard Industrial Classification (ISIC) System. The agriculture sector comprises activities in agriculture, hunting, forestry and fishing, in accordance with major division 1 of ISIC 2, categories A and B of ISIC 3 and category A of ISIC 4. The industry sector comprises mining and quarrying, manufacturing, construction and public utilities (electricity, gas and water), in accordance with major divisions 2 to 5 of ISIC 2, categories C to F of ISIC 3 or categories B to F of ISIC 4. The services sector consists of wholesale and retail trade, restaurants and hotels, transport, storage and communications, finance, insurance, real estate and business services, and community, social and personal services. This sector corresponds to major divisions 6 to 9 of ISIC 2 or categories G to P of ISIC 3. See the table below for a representation of how the aggregate sectors are calculated according to the different ISIC revisions:</p> <table border="0"> <thead> <tr> <th>Aggregate sector</th> <th>ISIC 2 major divisions</th> <th>ISIC 3 categories</th> <th>ISIC 4 categories</th> </tr> </thead> <tbody> <tr> <td>Agriculture</td> <td>1</td> <td>A+B</td> <td>A</td> </tr> <tr> <td>Industry</td> <td>2-5</td> <td>C-F</td> <td>B-F</td> </tr> <tr> <td>Services</td> <td>6-9</td> <td>G-Q</td> <td>G-U</td> </tr> <tr> <td>Sector not adequately defined</td> <td>0</td> <td>X</td> <td>n/a</td> </tr> </tbody> </table>	Aggregate sector	ISIC 2 major divisions	ISIC 3 categories	ISIC 4 categories	Agriculture	1	A+B	A	Industry	2-5	C-F	B-F	Services	6-9	G-Q	G-U	Sector not adequately defined	0	X	n/a
Aggregate sector	ISIC 2 major divisions	ISIC 3 categories	ISIC 4 categories																		
Agriculture	1	A+B	A																		
Industry	2-5	C-F	B-F																		
Services	6-9	G-Q	G-U																		
Sector not adequately defined	0	X	n/a																		

Employed population by status	
Employers (%)	Employers are those workers who, working on their own account or with one or a few partners, hold the type of jobs defined as a “self-employment jobs” (i.e. jobs where the remuneration is directly dependent upon the profits derived from the goods and services produced), and, in this capacity, have engaged, on a continuous basis, one or more persons to work for them as employee(s).
Employees (%)	Employees are all those workers who hold the type of jobs defined as “paid employment jobs”, where the incumbents hold explicit (written or oral) or implicit employment contracts that give them a basic remuneration that is not directly dependent upon the revenue of the unit for which they work.
Own account workers (%)	Own-account workers are those workers who, working on their own account or with one or more partners, hold the type of jobs defined as a “self-employment jobs”, and have not engaged on a continuous basis any employees to work for them.
Unpaid family workers (%)	Contributing family workers are those workers who hold “self-employment jobs” as own-account workers in a market-oriented establishment operated by a related person living in the same household.

o Sources



Indicator	Earliest year	Latest year
Total population		2020: CAPMAS, Projection
Sex ratio		2020: CAPMAS, Projection
Female early marriage before age 18		2014: ESCWA calculation based on DHS 2014's microdata
Life expectancy at birth	2005: Egypt Demographic and Health Survey 2014, Table 1.2 Life expectancy, Egypt 1976-2014, page 24 https://dhsprogram.com/pubs/pdf/FR302/FR302.pdf	2021: CAPMAS, Vital Statistics, Table Life Expectancy At Birth, By Sex (2007-2021), page 10 https://www.capmas.gov.eg/Pages/Publications.aspx?page_id=5104&Year=23633
Population below 15 years	2015: CAPMAS, Projection	2020: CAPMAS, Projection
Population aged 15-64 years	2015: CAPMAS, Projection	2020: CAPMAS, Projection
Population aged 65+	2015: CAPMAS, Projection	2020: CAPMAS, Projection
Widowed population by age and sex		2014: ESCWA calculation based on DHS 2014's microdata

Adolescent fertility	2005: ESCWA calculation based on DHS 2005's microdata	2014: ESCWA calculation based on DHS 2014's microdata
Total fertility rate	2005: ESCWA calculation based on DHS 2005's microdata	2014: ESCWA calculation based on DHS 2014's microdata
Maternal mortality ratio	2015: CAPMAS, Annual Bulletin of Births and Deaths Statistics 2019, Table No. (37), page 197 https://www.capmas.gov.eg/Pages/Publications.aspx?page_id=5104&Year=23633	2018: CAPMAS, Annual Bulletin of Births and Deaths Statistics 2019, Table No. (37), page 197 https://www.capmas.gov.eg/Pages/Publications.aspx?page_id=5104&Year=23633
Contraceptive use, any method	2005: Egypt Demographic and Health Survey 2005, Table 6.3 on Current use of family planning by governorate, page 91 https://dhsprogram.com/pubs/pdf/FR176/FR176.pdf	2014: Egypt Demographic and Health Survey 2014, Table A-6.1 on Current use of family planning methods, page 285 https://dhsprogram.com/pubs/pdf/FR302/FR302.pdf
Condom use	2005: ESCWA calculation based on DHS 2005's microdata	2014: ESCWA calculation based on DHS 2014's microdata
Births attended by skilled health personnel	2005: ESCWA calculation based on DHS 2005's microdata	2014: Egypt Demographic and Health Survey 2014, Table A-9.1 Antenatal and delivery care indicators, page 294 https://dhsprogram.com/pubs/pdf/FR302/FR302.pdf
Antenatal care coverage, at least one time	2005: ESCWA calculation based on DHS 2005's microdata	2014: ESCWA calculation based on DHS 2014's microdata

Antenatal care coverage, at least four times	2005: ESCWA calculation based on DHS 2005's microdata	2014: Egypt Demographic and Health Survey 2014, Table A-9.1 Antenatal and delivery care indicators, page 294 https://dhsprogram.com/pubs/pdf/FR302/FR302.pdf
Youth not in education, employment or training	2009: ESCWA calculation based on LFS 2009's microdata	2017: ESCWA calculation based on LFS 2017's microdata
Youth illiteracy rate	2018: CAPMAS, Labour Force Survey	2020: CAPMAS, Labour Force Survey
Adult illiteracy rate	2004: CAPMAS, Labour Force Survey	2021: CAPMAS, Labour Force Survey 2021, Appendix no.(8), page 255 (10+ years) https://censusinfo.capmas.gov.eg/Metadata-ar-v4.2/index.php/catalog/1776
Youth unemployment rate	2008: CAPMAS, Labour Force Survey 2008, Tables no.(4 and 20) (Calculated by ESCWA) https://censusinfo.capmas.gov.eg/Metadata-ar-v4.2/index.php/catalog/133	2021: CAPMAS, Labour Force Survey 2021, Appendix no.(4), page 251 https://censusinfo.capmas.gov.eg/Metadata-ar-v4.2/index.php/catalog/1776
Adult unemployment rate	2008: CAPMAS, Labour Force Survey 2008, Tables no.(4 and 20) (Calculated by ESCWA) https://censusinfo.capmas.gov.eg/Metadata-ar-v4.2/index.php/catalog/133	2021: CAPMAS, Labour Force Survey 2021, Appendix no.(1), page 248 https://censusinfo.capmas.gov.eg/Metadata-ar-v4.2/index.php/catalog/1776

Gender Parity Index , primary education	2012/2013: CAPMAS, Annual Bulletin for Pre-university Education for the Academic 2012/2013, Table No. (8), page 17 (Calculated by ESCWA) https://www.capmas.gov.eg/Pages/Publications.aspx?page_id=5104&YearID=23420	2019/2020: CAPMAS, Annual Bulletin for Pre-university Education for the Academic 2019/2020, Table No. (12), page 41 https://www.capmas.gov.eg/Pages/Publications.aspx?page_id=5104&YearID=23420
Gender Parity Index, secondary education	2012/2013: CAPMAS, Annual Bulletin for Pre-university Education for the Academic 2012/2013, Table No. (8), page 17 (Calculated by ESCWA) https://www.capmas.gov.eg/Pages/Publications.aspx?page_id=5104&YearID=23420	2019/2020: CAPMAS, Annual Bulletin for Pre-university Education for the Academic 2019/2020, Table No. (15), page 44 https://www.capmas.gov.eg/Pages/Publications.aspx?page_id=5104&YearID=23420
Gender Parity Index, tertiary education	2015/2016: CAPMAS, Annual Bulletin for Higher Education for the Academic 2015/2016, Table No. (145), page 191 https://www.capmas.gov.eg/Pages/Publications.aspx?page_id=5104&YearID=23350	2019/2020: CAPMAS, Annual Bulletin for Higher Education for the Academic 2019/2020, Table No. (159), page 210 https://www.capmas.gov.eg/Pages/Publications.aspx?page_id=5104&YearID=23350
Tertiary graduates in engineering		
Tertiary graduates in science		
Youth labour force participation rate	2009: ESCWA calculation based on LFS 2009's microdata	2021: CAPMAS, Labour Force Survey 2021, Appendix no.(7), page 254 https://censusinfo.capmas.gov.eg/Metadata-ar-v4.2/index.php/catalog/1776

Adult labour force participation rate	2009: ESCWA calculation based on LFS 2009's microdata	2021: CAPMAS, Labour Force Survey 2021, Appendix no.(5), page 252 https://censusinfo.capmas.gov.eg/Metadata-ar-v4.2/index.php/catalog/1776
Youth employment to population ratio	2009: ESCWA calculation based on LFS 2009's microdata	
Adult employment to population ratio	2009: ESCWA calculation based on LFS 2009's microdata	2021: CAPMAS, Labour Force Survey 2021, Appendix no.(1), page 248 (Calculated by ESCWA) https://censusinfo.capmas.gov.eg/Metadata-ar-v4.2/index.php/catalog/1776
Employment by sector	2008: CAPMAS, Labour Force Survey 2008, Tables no.(10a and 10b) (Calculated by ESCWA) https://censusinfo.capmas.gov.eg/Metadata-ar-v4.2/index.php/catalog/133	2021: CAPMAS, Labour Force Survey 2021, Table no.(7), page 99 -116 (Calculated by ESCWA) https://censusinfo.capmas.gov.eg/Metadata-ar-v4.2/index.php/catalog/1776
Employed population by status	2008: CAPMAS, Labour Force Survey 2008, Table no.(16) (Calculated by ESCWA) https://censusinfo.capmas.gov.eg/Metadata-ar-v4.2/index.php/catalog/133	2021: CAPMAS, Labour Force Survey 2021, Table no.(13), page 155 -163 (Calculated by ESCWA) https://censusinfo.capmas.gov.eg/Metadata-ar-v4.2/index.php/catalog/1776

23-00056