

# Integrated Vulnerability Assessment Application on the Lebanese Agricultural Sector for Informing Adaptation

Ihab Jnad

Hiam Al-Ashkar

The Arab Center for the Studies of Arid Zones and Dry Lands (ACSAD)

إيهاب جناد

هيام الأشقر

المركز العربي لدراسات المناطق الجافة و الأراضي القاحلة (اكساد)

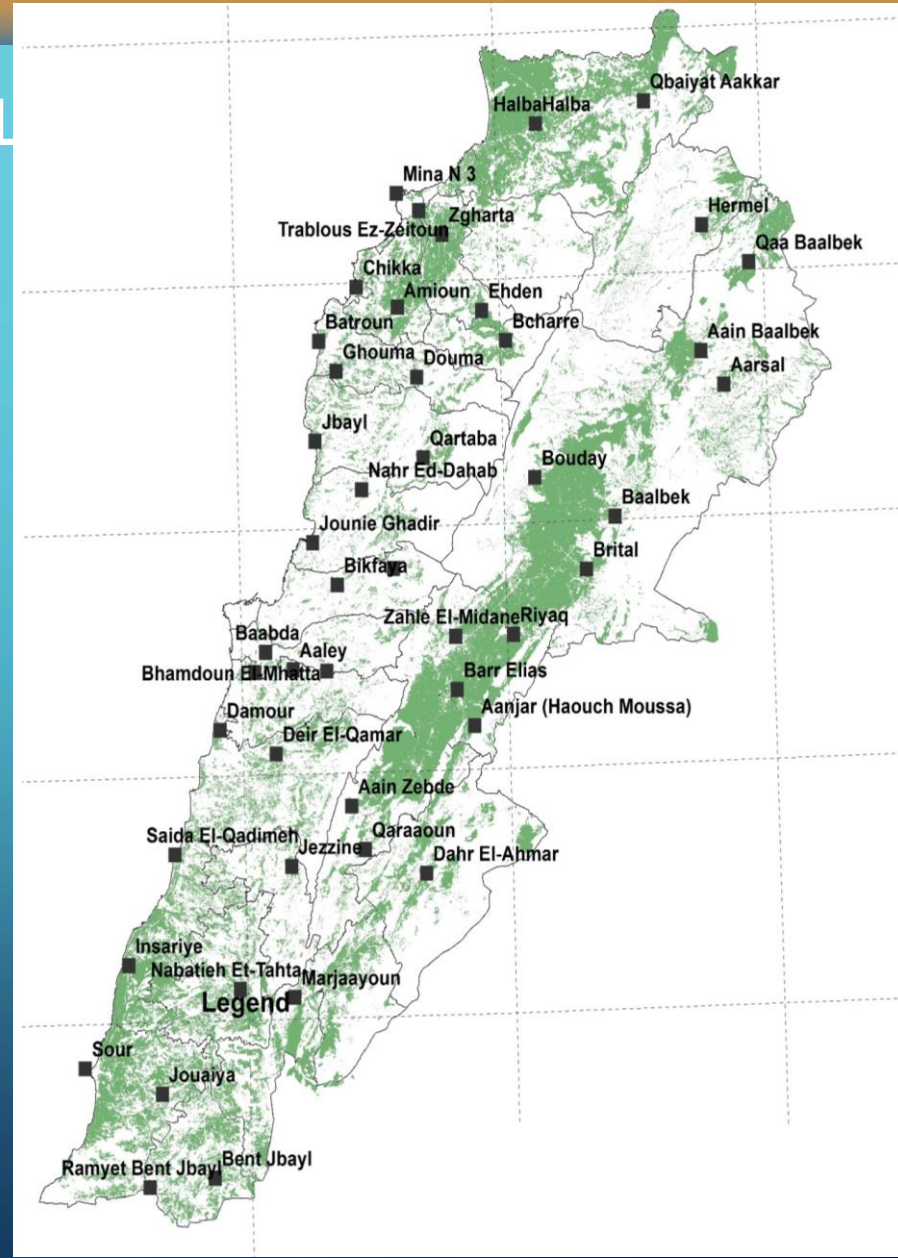
# مشروع دراسة حساسية القطاع الزراعي للتغيرات المناخية في الجمهورية اللبنانية

- الجهات المشاركة في المشروع: ينفذ هذا المشروع بالتعاون بين اكساد والوكالة الألمانية للتعاون الفني (GIZ) والاسكوا ووزارة الزراعة اللبنانية والمركز الوطني للاستشعار عن بعد في لبنان
- الهدف من المشروع: دراسة حساسية القطاع الزراعي في الجمهورية اللبنانية للتغيرات المناخية،

# Study Area

## Agricultural Class from Landuse L Map:

- Olive
- Field crops in large areas
- Field crops in large areas
- Open horticulture
- Banana
- Citrus fruit trees
- Deciduous fruit trees
- Protected agriculture
- Vineyards





**RICCAR**

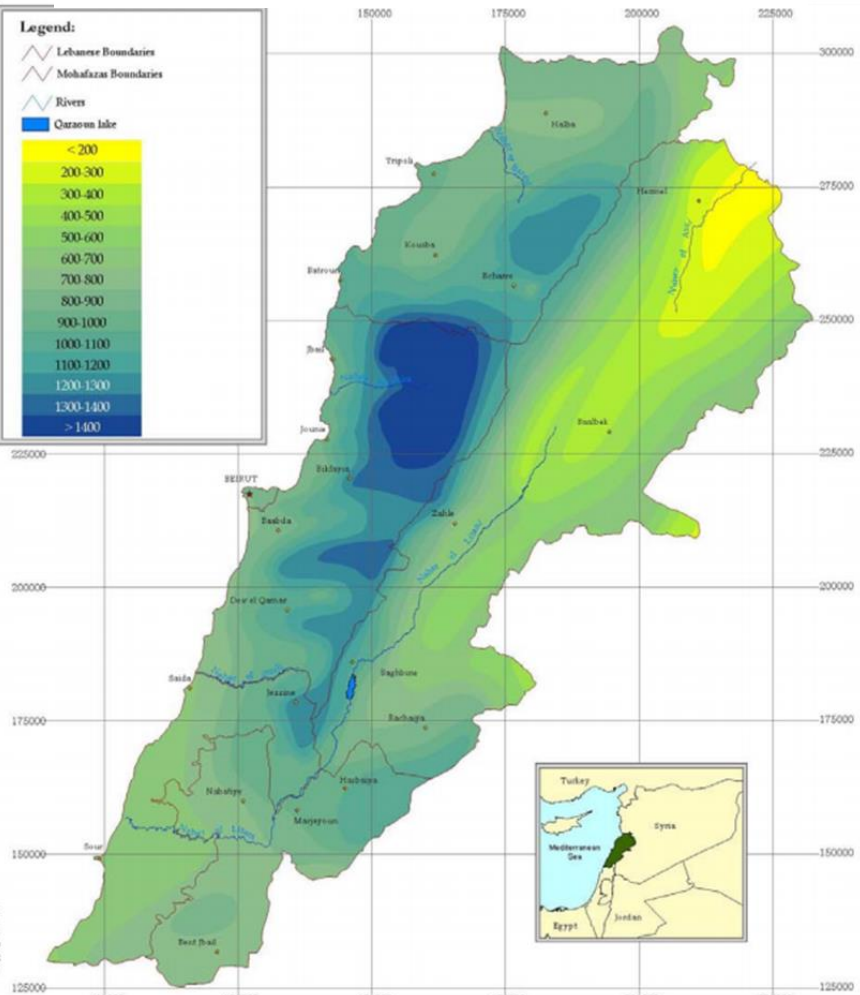
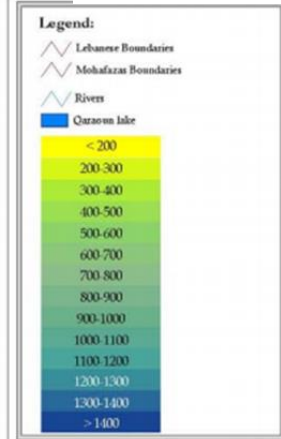
Regional Initiative for the Assessment of  
Climate Change Impacts on Water Resources and  
Socio-Economic Vulnerability in the Arab Region

ig2003.pat

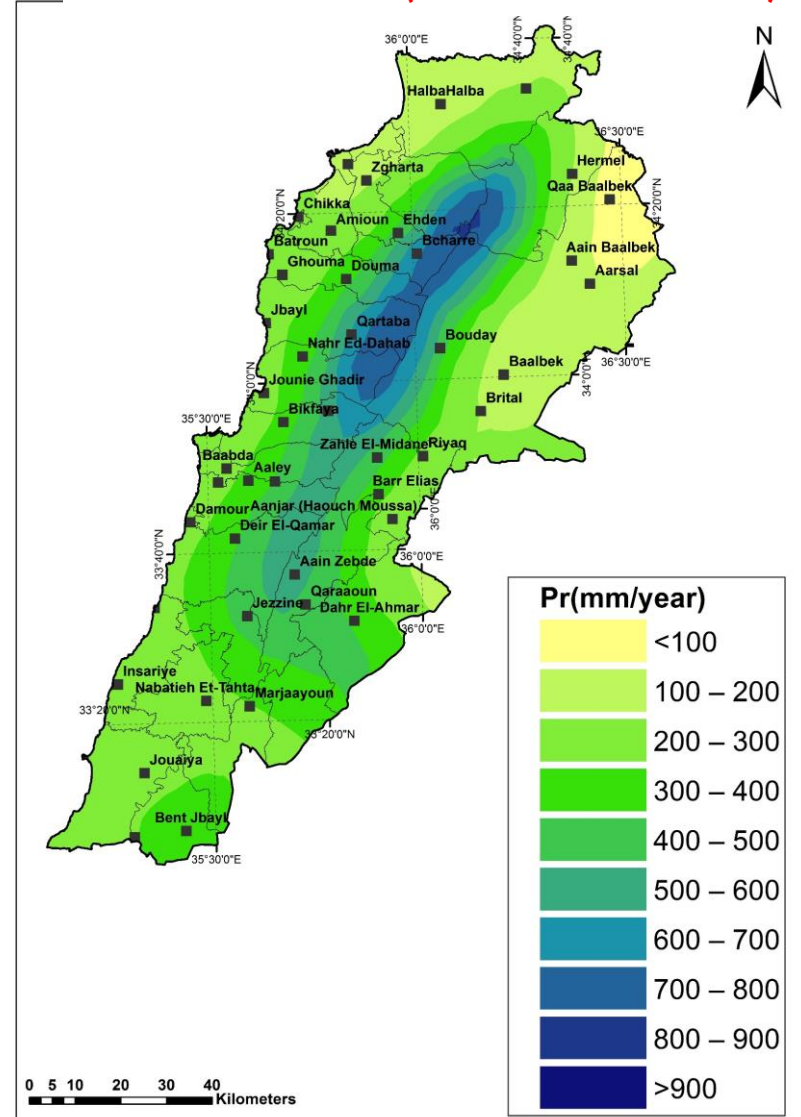
# Observed precipitation

Ministry of

topography



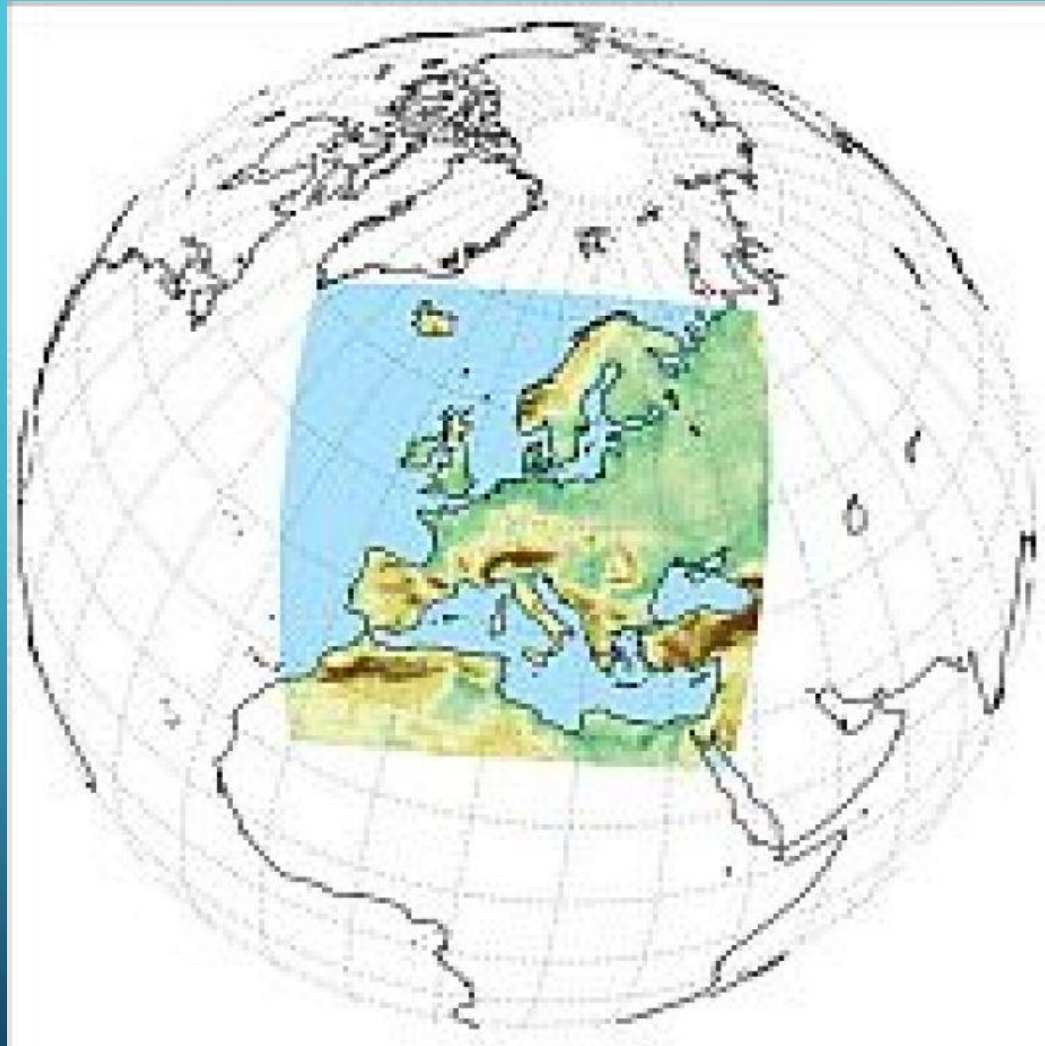
# EURO-CORDEX (12.5 km resolution)



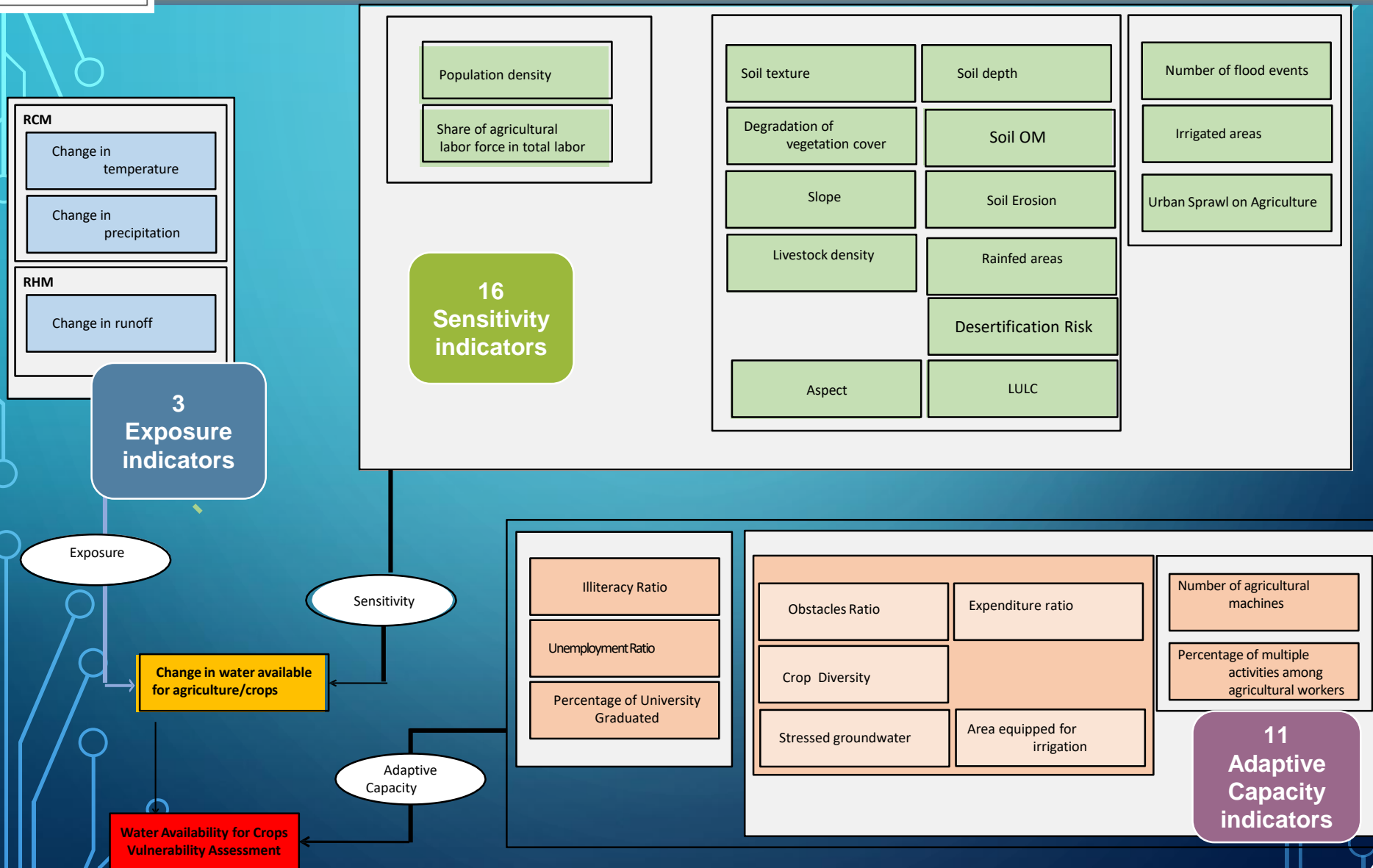


Regional Initiative for the Assessment of  
Climate Change Impacts on Water Resources and  
Socio-Economic Vulnerability in the Arab Region

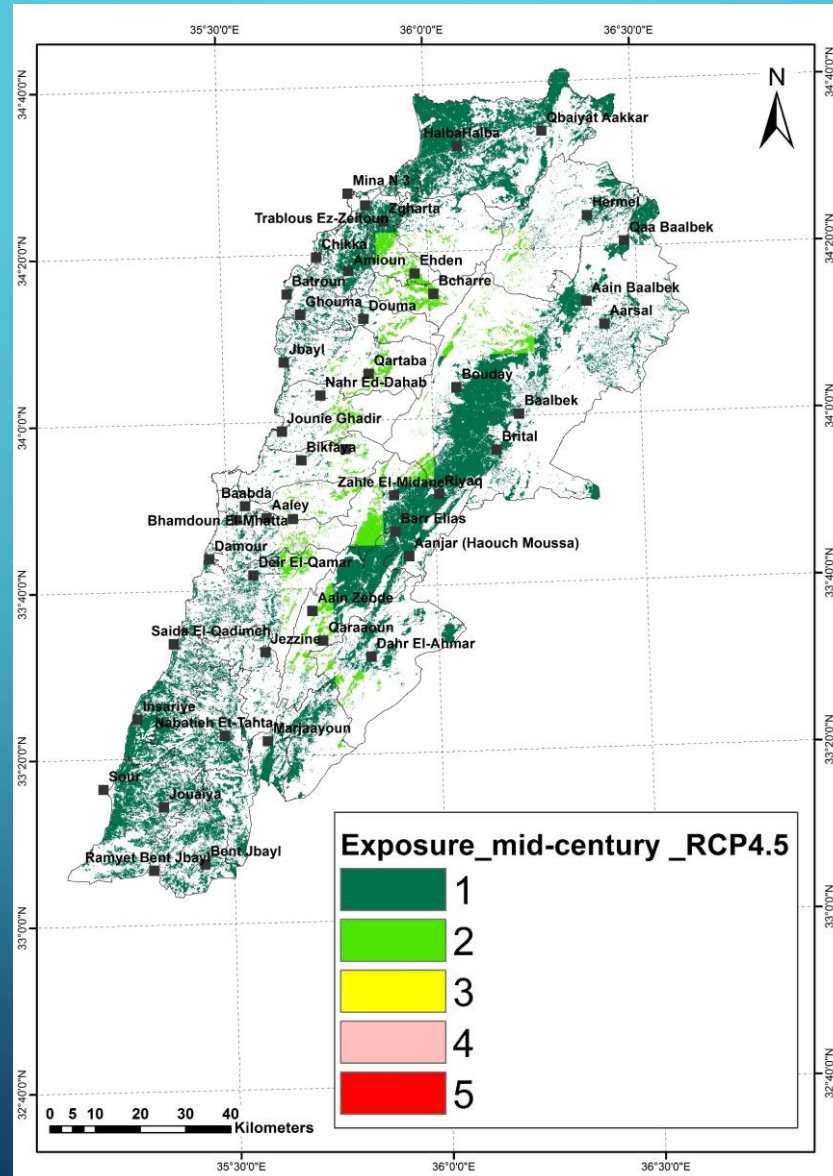
# EURO-CORDEX



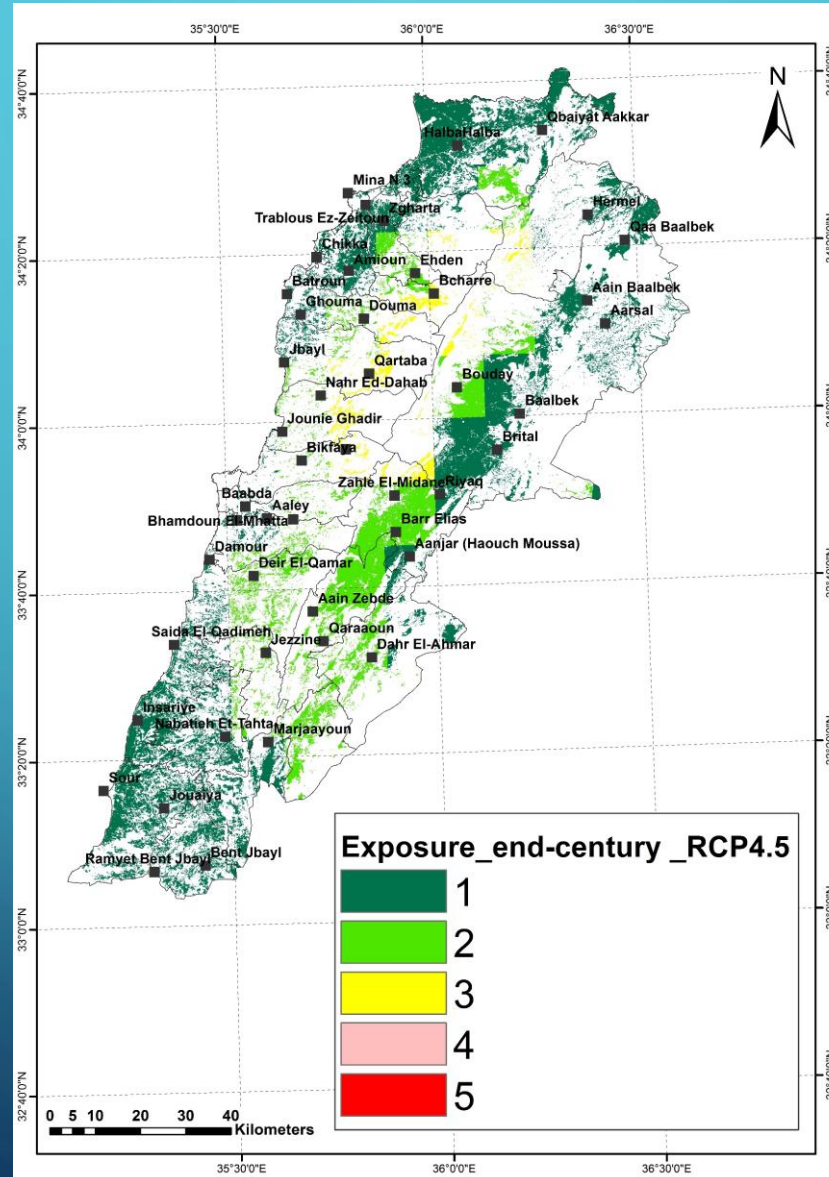
# Impact Chain



# Exposure –rcp4.5 Mid-Century

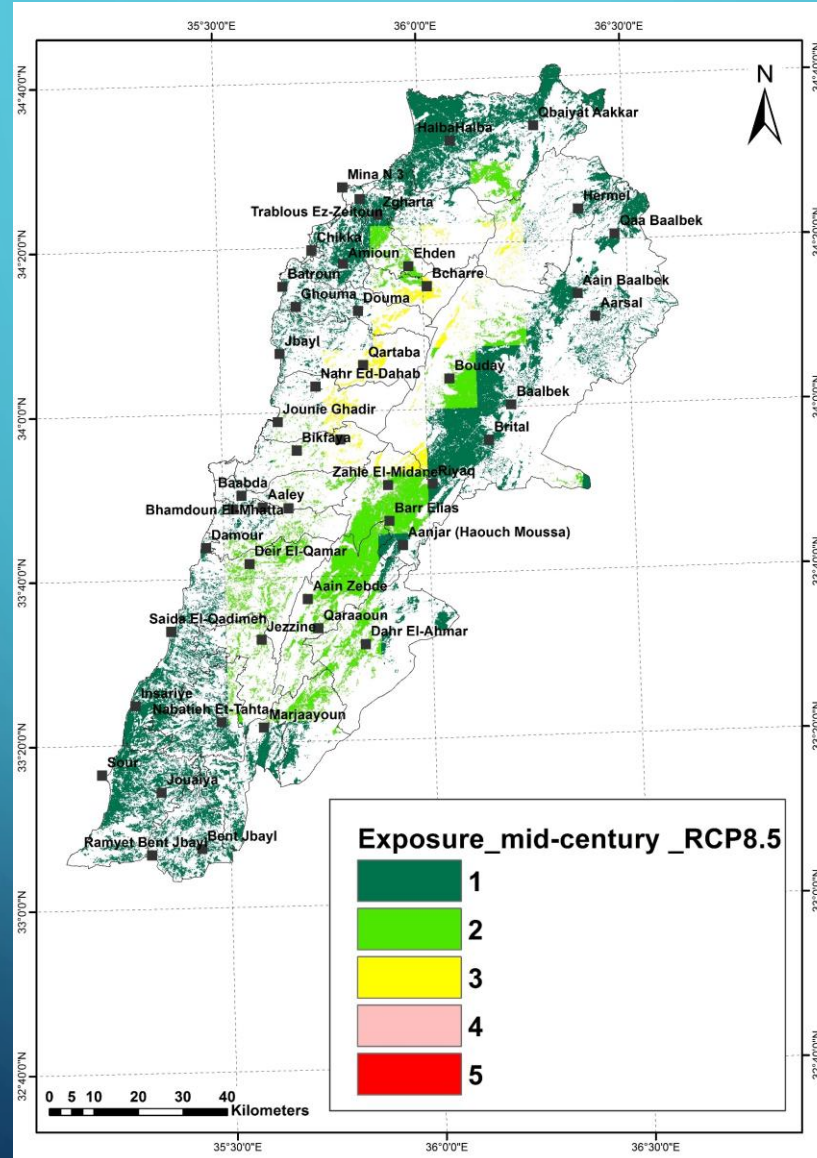


# Exposure –rcp4.5 End-Century

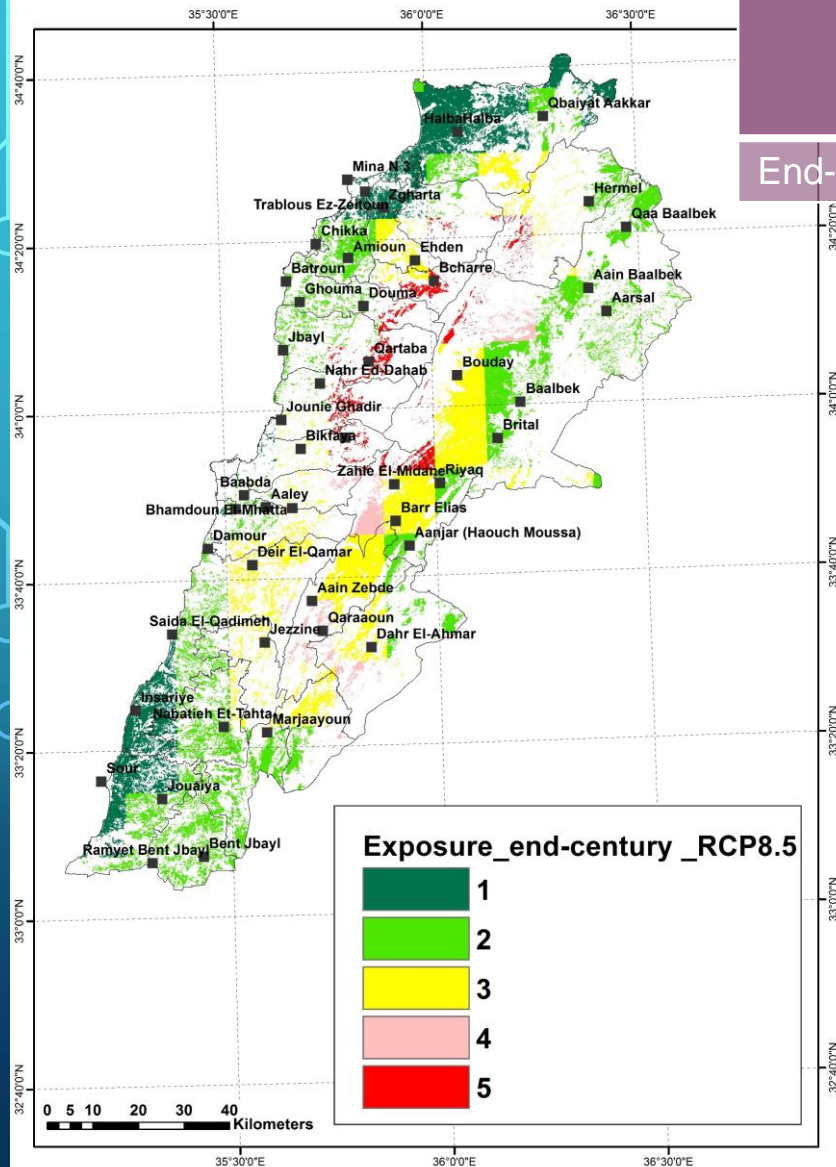




# Exposure –rcp8.5 Mid-Century



# Exposure –rcp8.5 End-Century

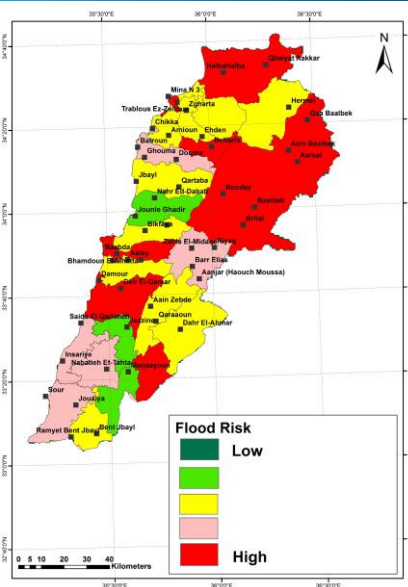
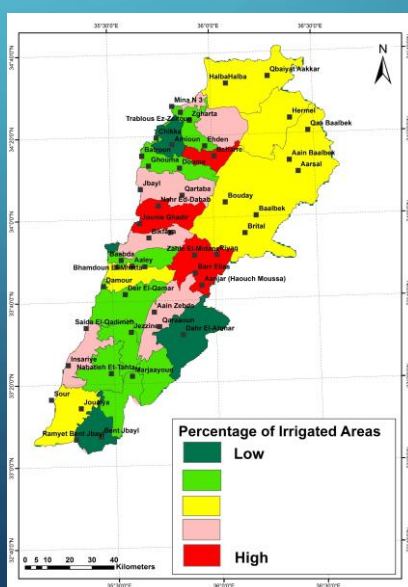
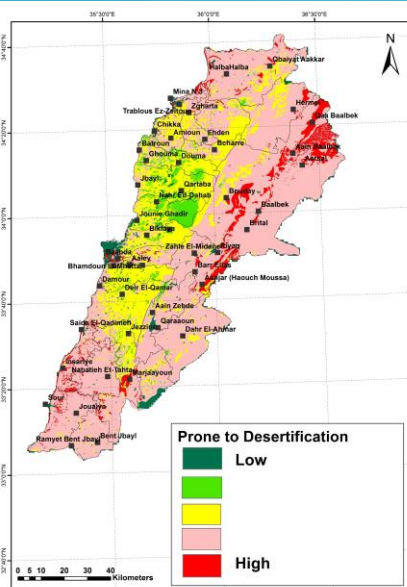
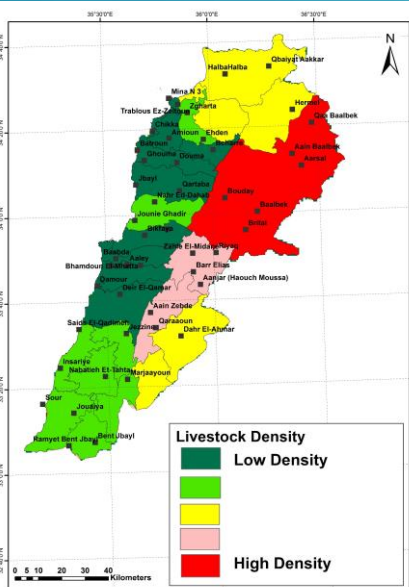
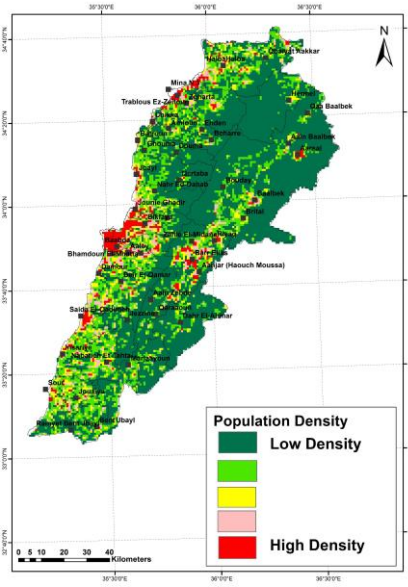
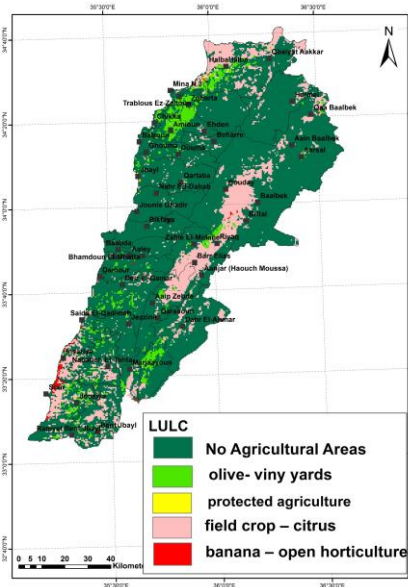
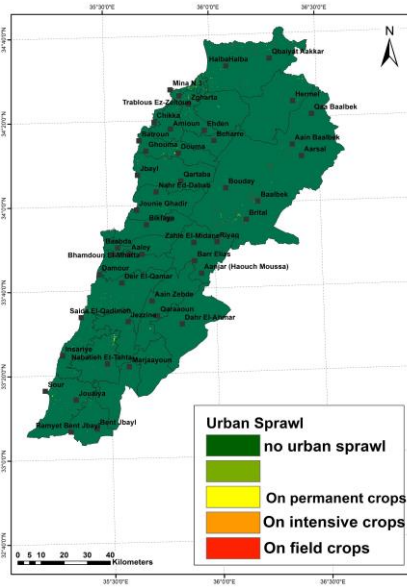
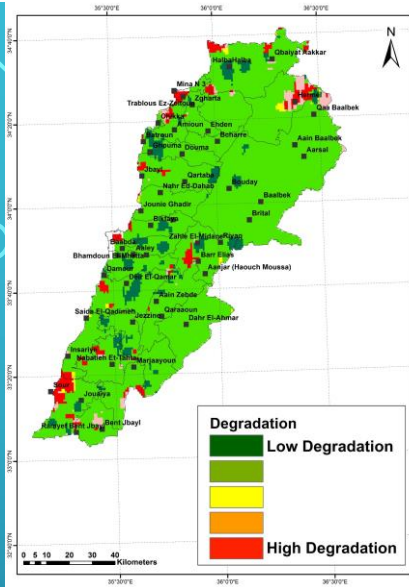


Scenario	Percentage of study area		
	Low EX	Moderate EX	High EX
End-Century rcp8.5	57%	27%	16%

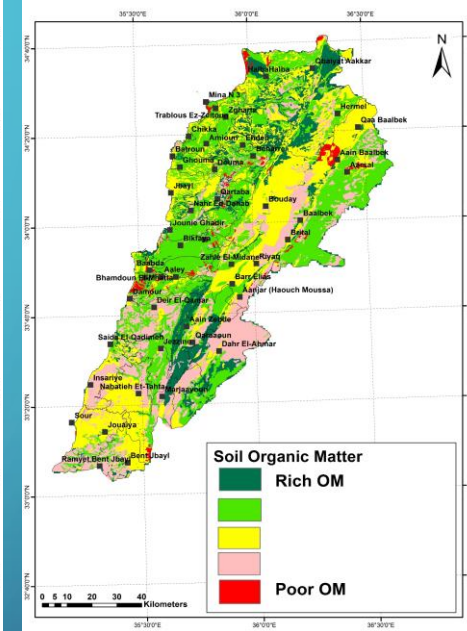
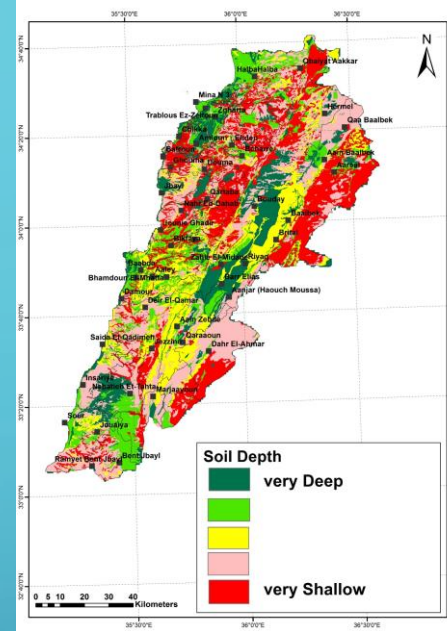
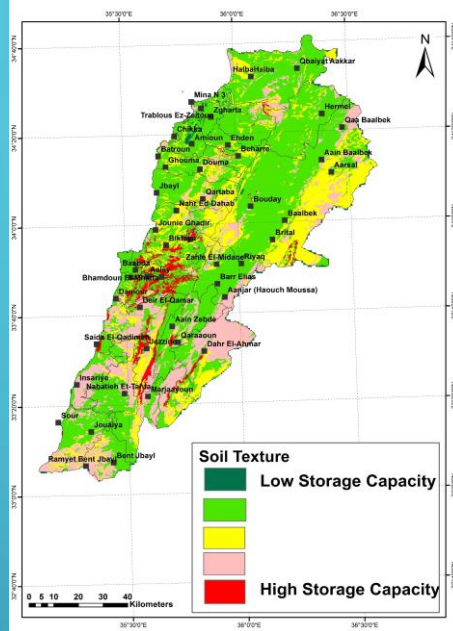
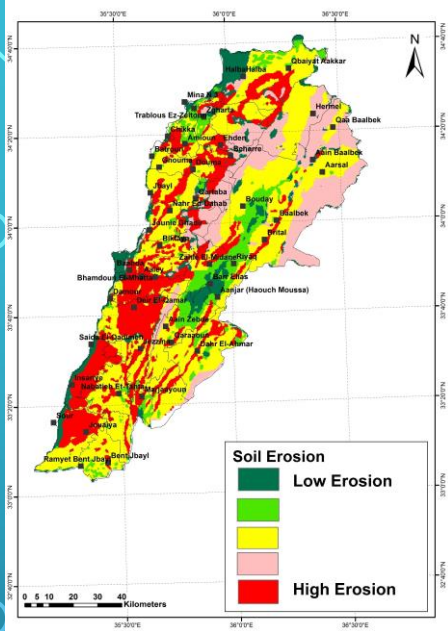
**CAZA with High Exposure:**

- Akkar.
- Zehleh,
- West Bekaa
- Bcharre
- Rachya
- Hasbia.

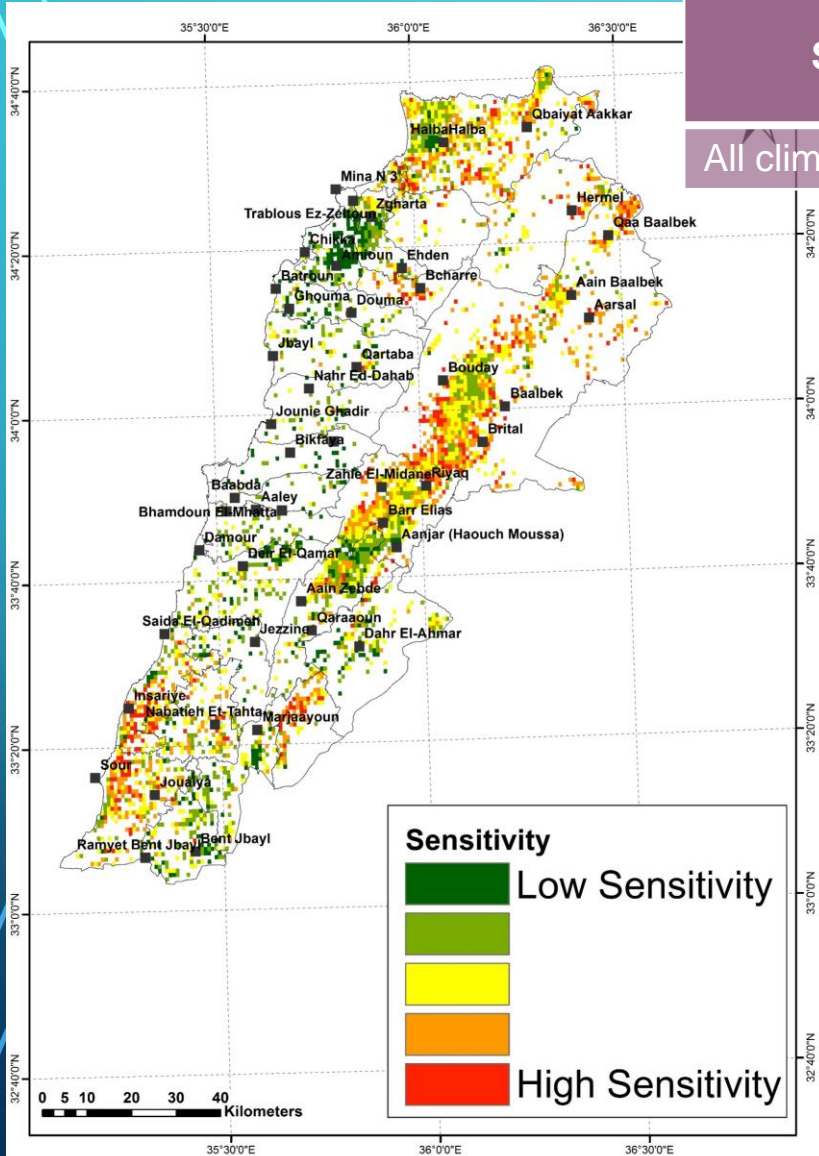
# Sensitivity Indicators



# Sensitivity Indicators



# Sensitivity

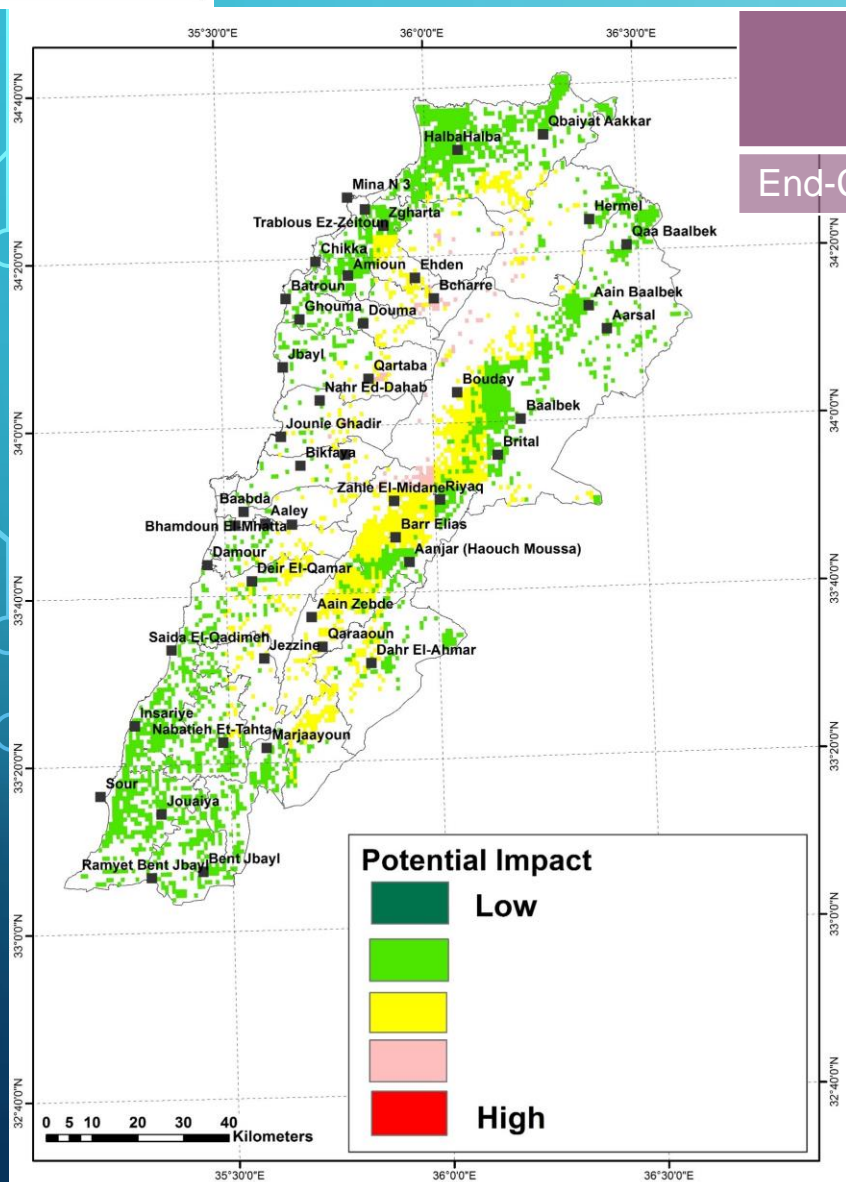


Scenario	Percentage of study area		
	Low SE	Moderate SE	High SE
All climate scenarios	12%	54%	34%

**CAZA with High Sensitivity:**

- Akkar.
- Zehleh,
- Baalbak
- Sida
- Sour,
- Hasbia.

# Potential Impact –rcp8.5 End-Century

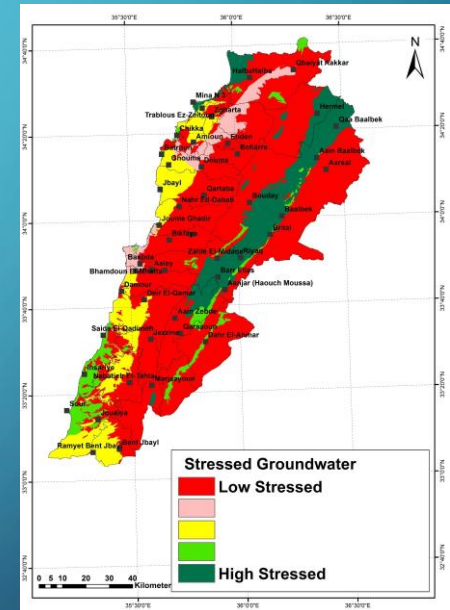
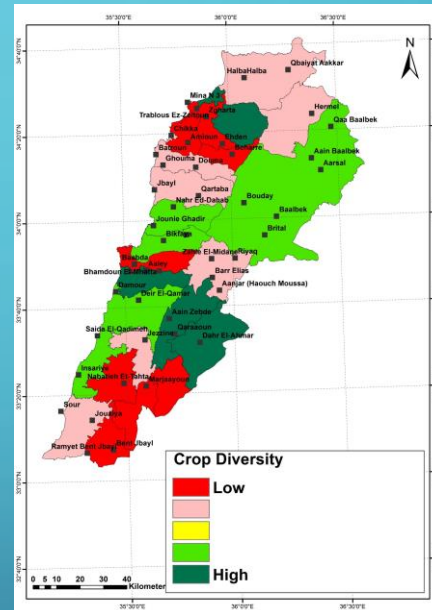
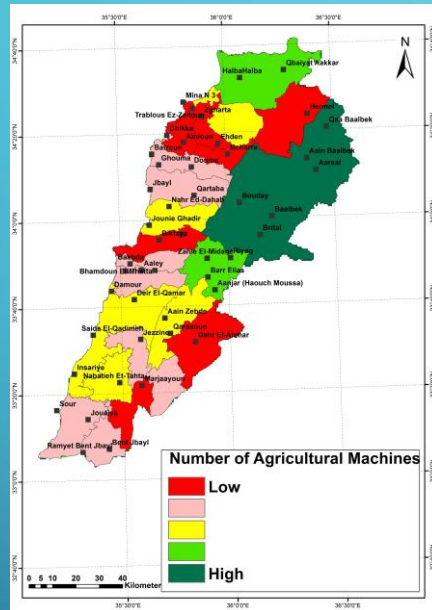
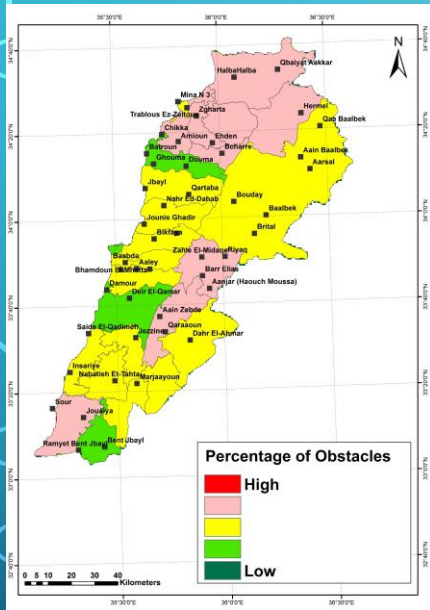


Scenario	Percentage of study area		
	Low PI	Moderate PI	High PI
End-Century rcp8.5	30%	55%	15%

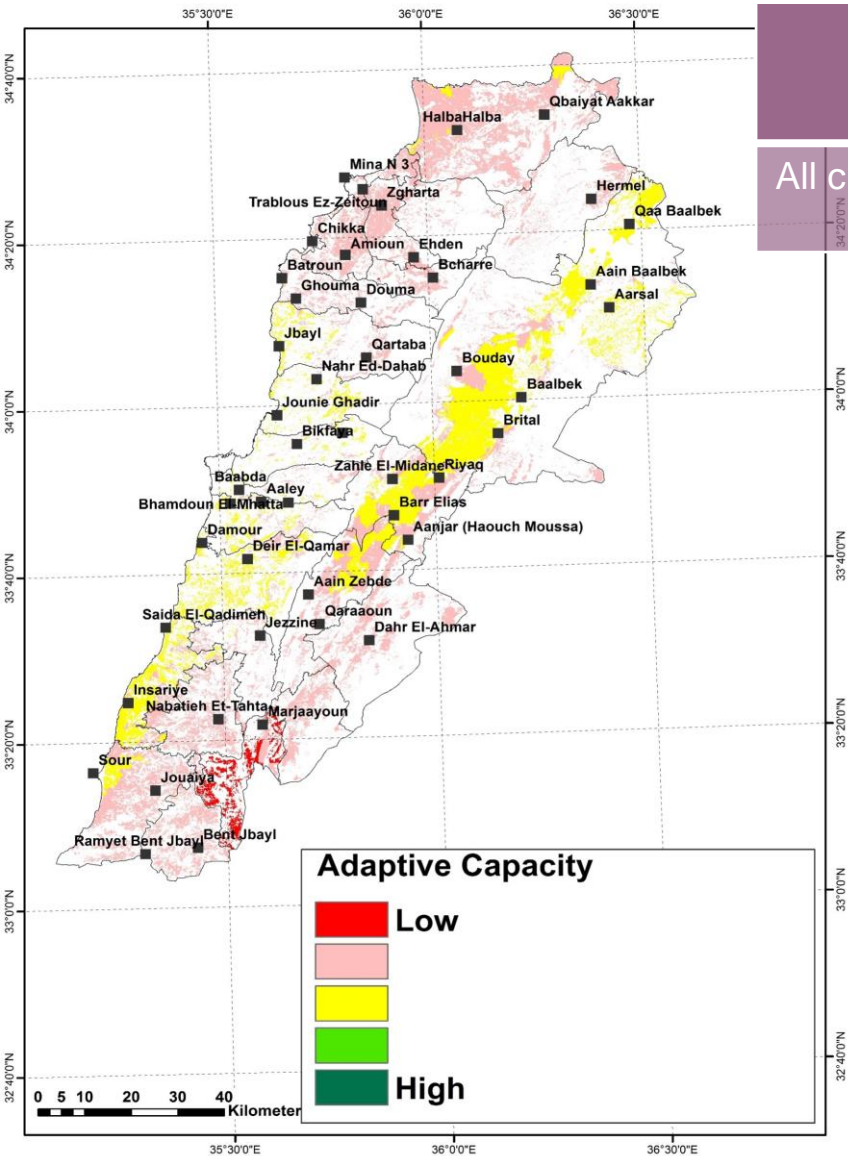
**CAZA with High PI:**

- Akkar.
- Zehleh,
- West Bekaa,
- Hasbia.

# Adaptive Capacity Indicators



# Adaptive Capacity



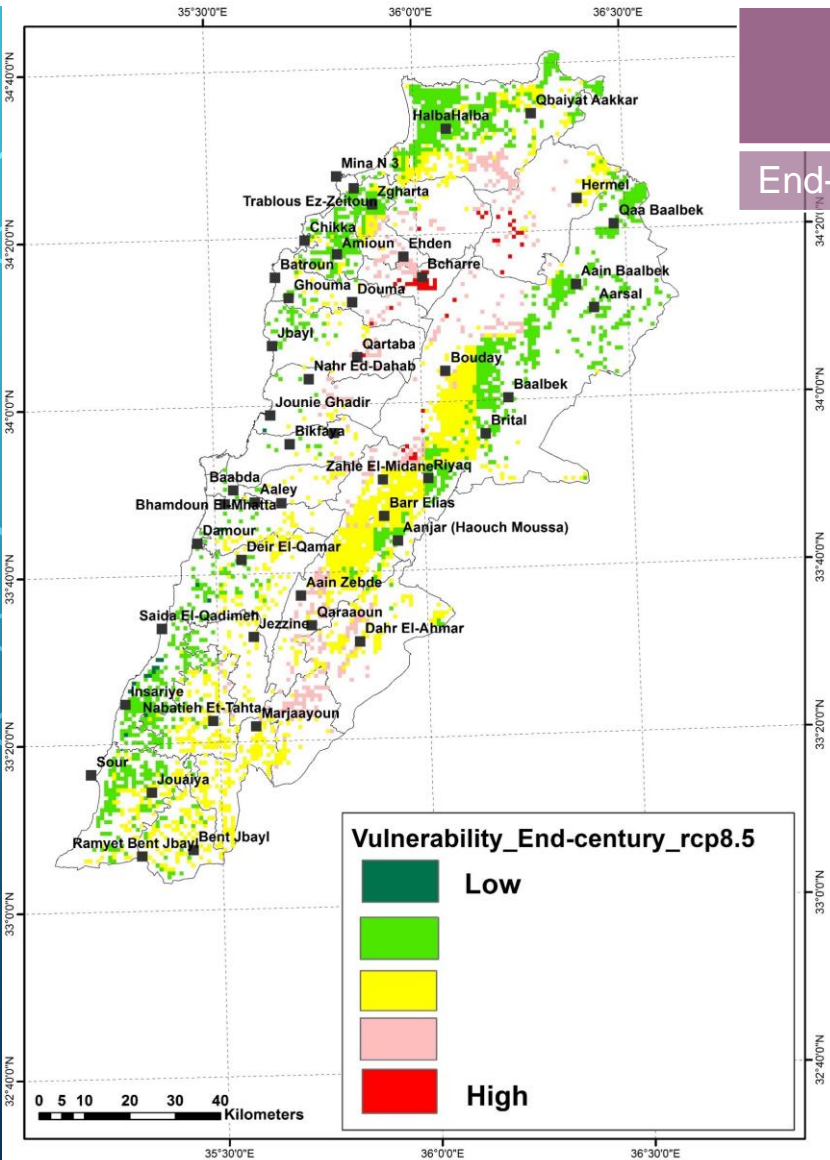
Scenario	Percentage of study area		
	Low AC	Moderate AC	High AC
All climate scenarios	35%	55%	10%

## CAZA with Low AC:

- Marjaayoun.
- Hasbia,
- Rachia,
- Bcherri.



# Vulnerability –rcp8.5 End-Century



Scenario	Percentage of study area		
	Low VA	Moderate VA	High VA
End-Century rcp8.5	1%	86%	13%

## CAZA with High VA:

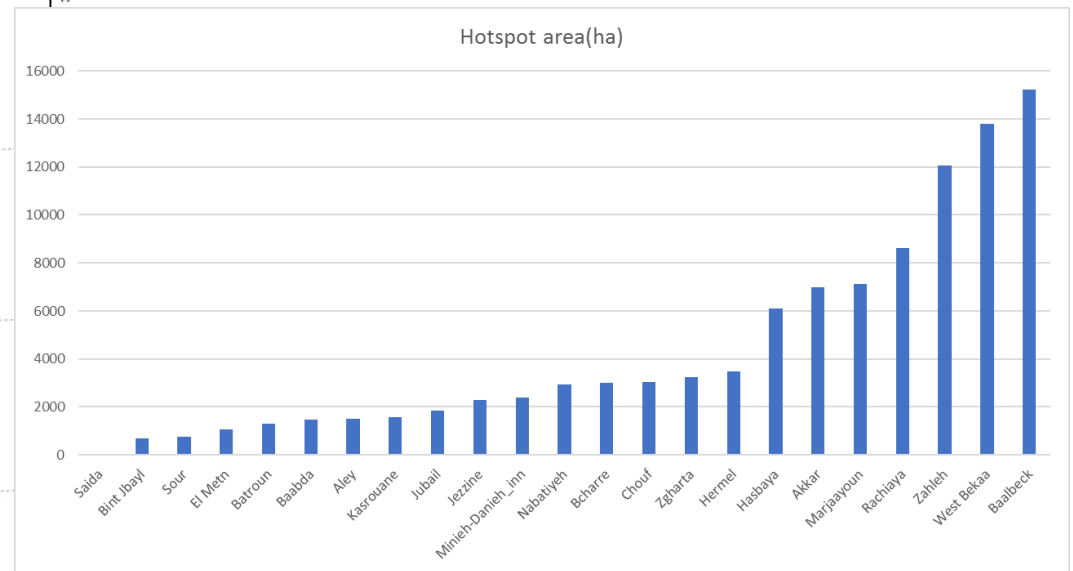
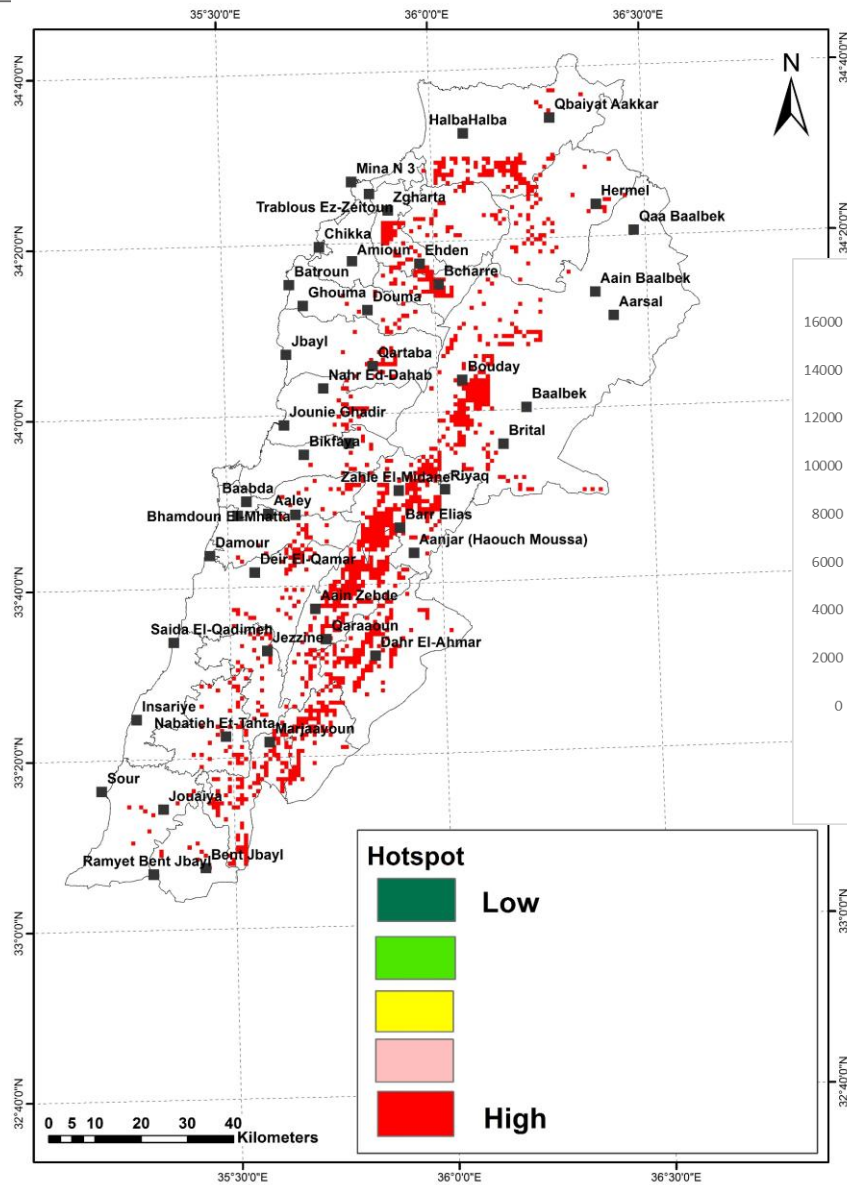
- Akkar.
- Hasbia,
- Rachia,
- Bcherri.



**RICCAR**

Regional Initiative for the Assessment of  
Climate Change Impacts on Water Resources and  
Socio-Economic Vulnerability in the Arab Region

# Hotspots:





**RICCAR**

Regional Initiative for the Assessment of  
Climate Change Impacts on Water Resources and  
Socio-Economic Vulnerability in the Arab Region

Thanks