

# Improving water and Sanitation Infrastructure and Services in MENA



unite for  
children

By Omar El Hattab, Regional Advisor WASH, MENA RO  
*March 2018*

unicef 

# SDG Goals 6.1 and 6.2

**6.1** By 2030, achieve universal and equitable access to safe and affordable drinking water for all

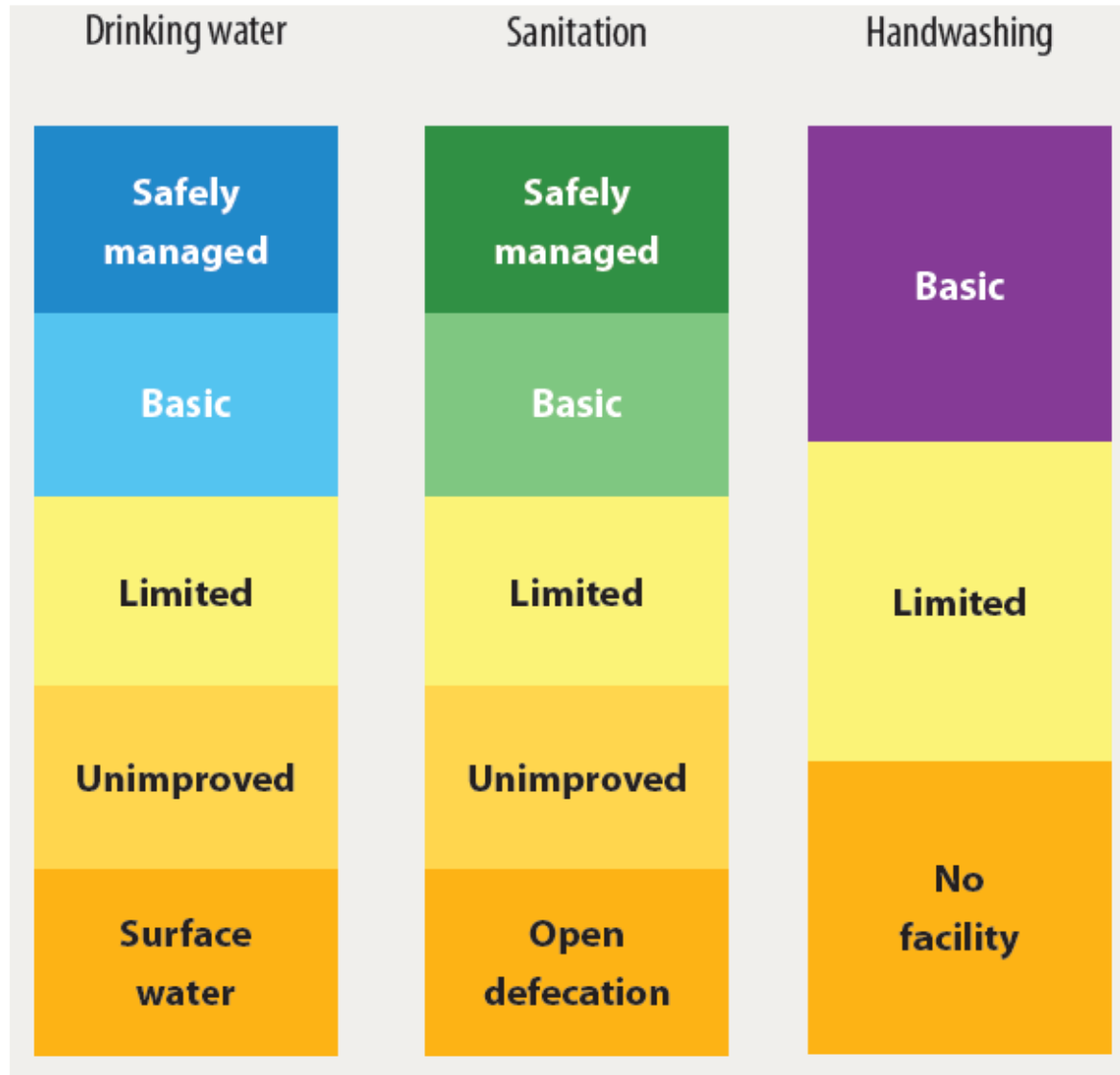
**6.2** By 2030, achieve access to adequate and equitable sanitation and hygiene for all and end open defecation, paying special attention to the needs of women and girls and those in vulnerable situations

# MENA Region and the WASH SDGs

## Facts and Figures

- Over 35 million children lack access to safely managed drinking water supply services
- Over 100 million children lack access to safely managed sanitation services
- Nearly 4 million children do not practice safe hygiene
- Rural children do not have access to safely managed drinking water or sanitation services
- Rural children are twice more likely to only have access to unimproved drinking water sources compared to urban children
- It's nearly only rural children whom drink untreated surface water
- Rural children are nearly twice more likely to only have access to unimproved sanitation facilities compared to urban children
- It's nearly only rural children whom defecate in the open
- Increase in number of children affected by humanitarian situations

# SDG WASH Ladders



# Normative Interpretation of the Drinking Water Target (SDG 6.1)

## TARGET LANGUAGE

By 2030, achieve

*universal*

and *equitable*

*access*

to *safe*

and *affordable*

*drinking water*

*for all*

## NORMATIVE INTERPRETATION

Implies all exposures and settings including households, schools, health facilities, workplaces, and public spaces

Implies progressive reduction and elimination of inequalities between population subgroups

Implies sufficient water to meet domestic needs is reliably available close to home

Safe drinking water is free from pathogens and elevated levels of toxic chemicals at all times

Payment for services does not present a barrier to access or prevent people meeting other basic human needs

Water used for drinking, cooking, food preparation and personal hygiene

Suitable for use by men, women, girls and boys of all ages including people living with disabilities

# MDG/SDG Service Ladder for Drinking Water

| MDG/SDG        | Service ladder                | Description   |
|----------------|-------------------------------|---|
| MDG continuity | No service                    | Surface water   |
|                | Unimproved water              | Facility which does not protect against contamination                                     |
|                | Basic water                   | Improved facility within 30 minutes round trip collection time                            |
|                | Safely managed drinking water | Improved facility located on premises, available when needed, and free from contamination |
| SDG 6.1        | Safely managed drinking water | Improved facility located on premises, available when needed, and free from contamination |

Progressive realization

# SDG Service Ladder for Drinking Water

| SERVICE LEVEL         | DEFINITION   |
|-----------------------|--|
| <b>SAFELY MANAGED</b> | Drinking water from an improved water source that is located on premises, available when needed and free from faecal and priority chemical contamination |
| <b>BASIC</b>          | Drinking water from an improved source, provided collection time is not more than 30 minutes for a round trip, including queuing                         |
| <b>LIMITED</b>        | Drinking water from an improved source for which collection time exceeds 30 minutes for a round trip, including queuing                                  |
| <b>UNIMPROVED</b>     | Drinking water from an unprotected dug well or unprotected spring  |
| <b>SURFACE WATER</b>  | Drinking water directly from a river, dam, lake, pond, stream, canal or irrigation canal   |

# Normative Interpretation of Sanitation and Hygiene - Target (SDG 6.2)

## TARGET LANGUAGE

By 2030, achieve

## NORMATIVE INTERPRETATION

|   |  |
|---|--|
| <i>access</i>   | Implies facilities close to home that can be easily reached and used when needed   |
| to <i>adequate</i>  | Implies a system which hygienically separates excreta from human contact as well as safe reuse/treatment of excreta in situ, or safe transport and treatment off-site  |
| and <i>equitable</i>  | Implies progressive reduction and elimination of inequalities between population sub-groups  |
| <i>sanitation</i>   | Sanitation is the provision of facilities and services for safe management and disposal of human urine and faeces  |
| and <i>hygiene</i>  | Hygiene is the conditions and practices that help maintain health and prevent spread of disease including handwashing, menstrual hygiene management and food hygiene   |
| <i>for all</i>  | Suitable for use by men, women, girls and boys of all ages including people living with disabilities   |
| end <i>open defecation</i>                                      | Excreta of adults or children are: deposited (directly or after being covered by a layer of earth) in the bush, a field, a beach, or other open area; discharged directly into a drainage channel, river, sea, or other water body; or are wrapped in temporary material and discarded   |
| paying special attention to the <i>needs of women and girls</i> | Implies reducing the burden of water collection and enabling women and girls to manage sanitation and hygiene needs with dignity. Special attention should be given to the needs of women and girls in 'high use' settings such as schools and workplaces, and 'high risk' settings such as health care facilities and detention centres |
| and <i>those in vulnerable situations</i>                       | Implies attention to specific WASH needs found in 'special cases' including refugee camps, detention centres, mass gatherings and pilgrimages  |



# SDG Sanitation Service Ladder

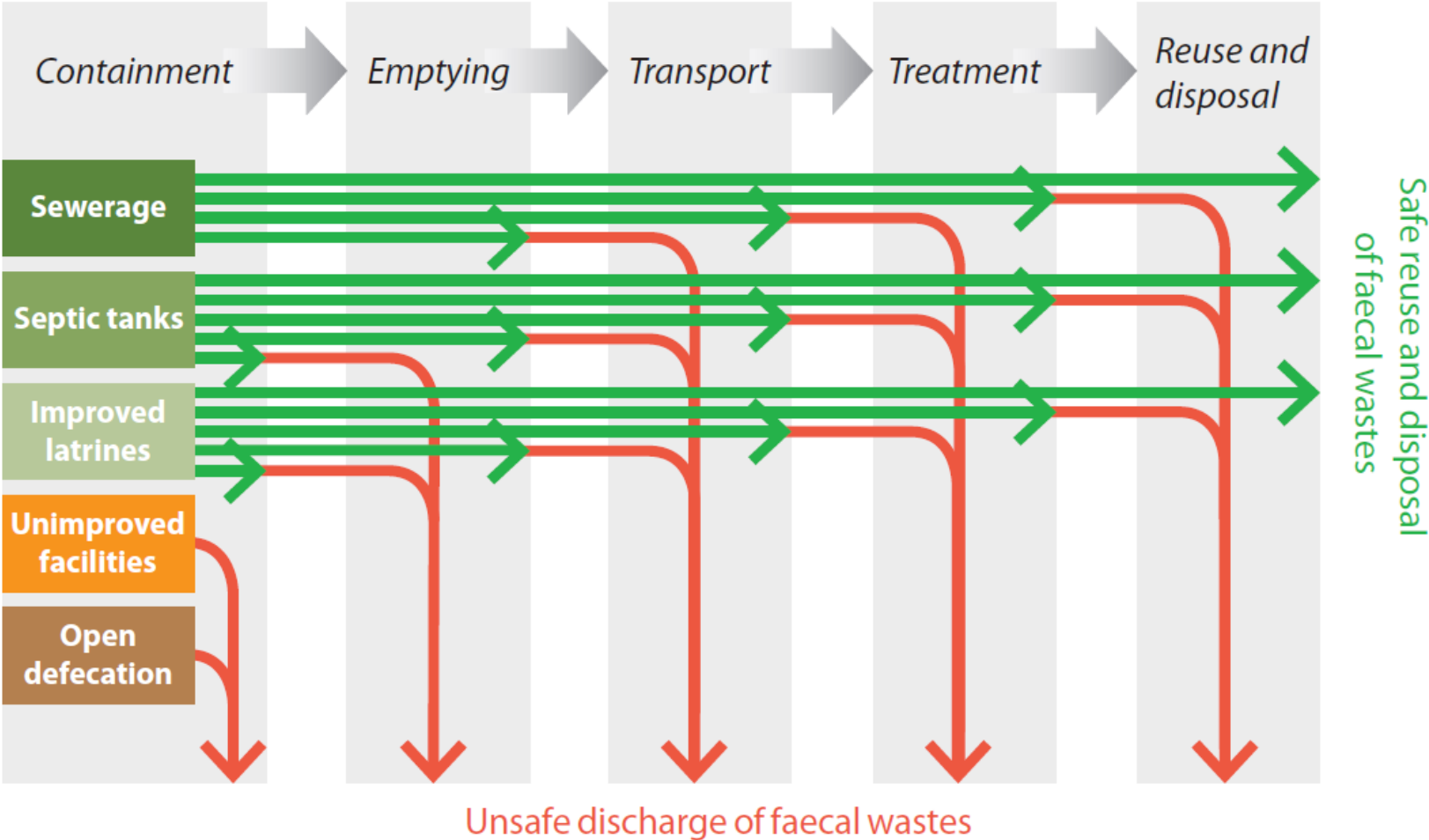
| MDG/SDG        | Service ladder                   | Description  |
|----------------|----------------------------------|--|
| SDG 6.2        | <b>Safely managed sanitation</b> | Private improved facility where faecal wastes are safely disposed on-site or transported and treated off-site; plus a handwashing facility with soap and water |
|                | <b>Basic sanitation</b>          | Private improved facility which separates excreta from human contact   |
| MDG continuity | <b>Shared sanitation</b>         | Improved facility shared with other households   |
|                | <b>Unimproved sanitation</b>     | Unimproved facility does not protect against contamination   |
|                | <b>No service</b>                | Open defecation  |

Progressive realization

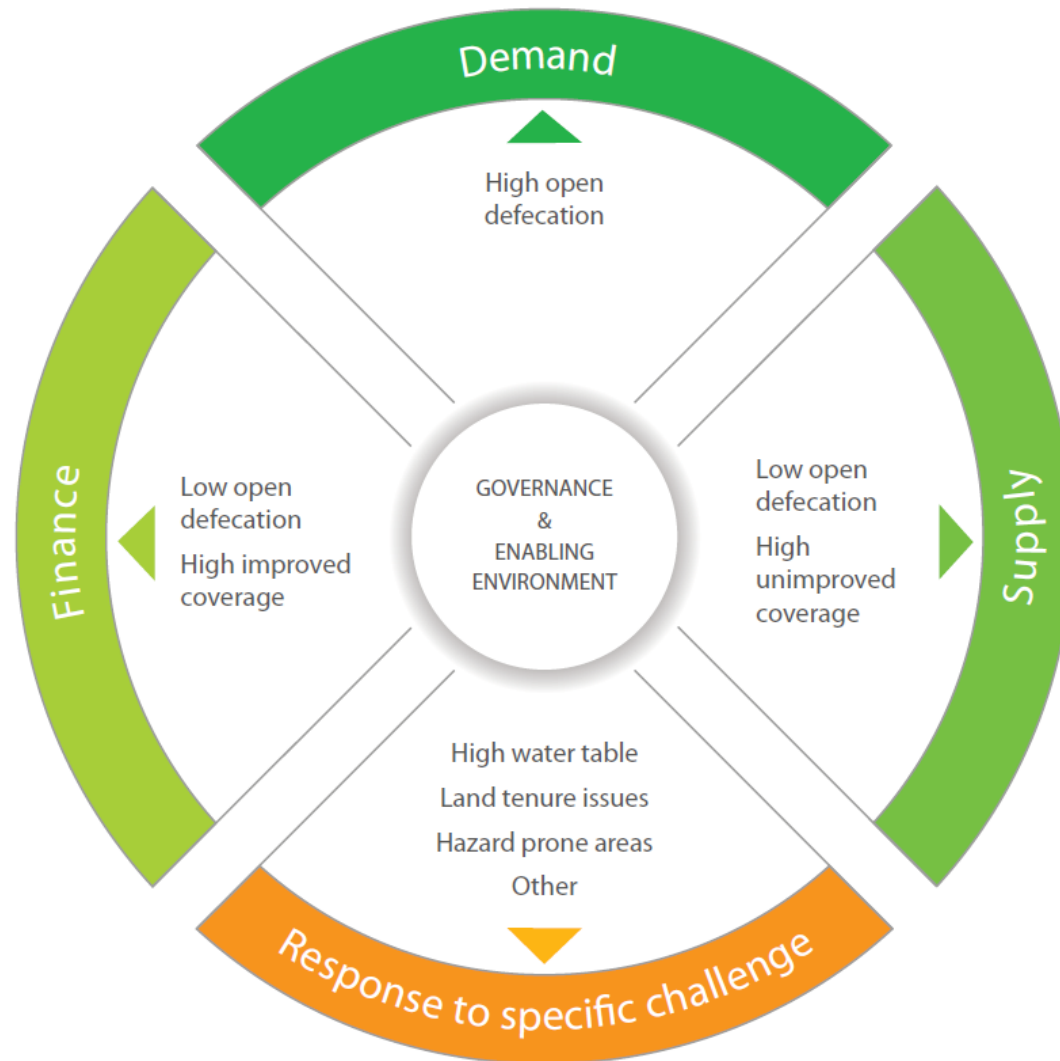
# MDG/SDG Sanitation Service Ladder

| SERVICE LEVEL          | DEFINITION   |
|------------------------|--|
| <b>SAFELY MANAGED</b>  | Use of improved facilities that are not shared with other households and where excreta are safely disposed of in situ or transported and treated offsite |
| <b>BASIC</b>           | Use of improved facilities that are not shared with other households   |
| <b>LIMITED</b>         | Use of improved facilities shared between two or more households   |
| <b>UNIMPROVED</b>      | Use of pit latrines without a slab or platform, hanging latrines or bucket latrines  |
| <b>OPEN DEFECATION</b> | Disposal of human faeces in fields, forests, bushes, open bodies of water, beaches or other open spaces, or with solid waste                             |

# Wastewater Management Chain



# Context Specific Sanitation Programming



# WASH in MENA Region

## Challenges Include:

- Water scarcity
- Climate change
- Emergencies
- Shared waters
- Cost (i.e. manmade water)
- Sustainability
- Governance
- Accountability

# Thank You

Your Regional WASH Team

