



EESTI PUUETEGA INIMESTE KODA
ESTONIAN CHAMBER OF PEOPLE WITH DISABILITIES



**Conference on “Transition towards Independent
Living within the Community”
February 14, 2023 Beirut, Lebanon**

**Towards accessible and affordable independent living offered in a
public-private partnership approach**

Meelis Joost

**Chair of Estonian Chamber of People with Disabilities
Board member of Estonian Agrenska Foundation**



The Estonian Chamber of Disabled People

Interval independent living provision

□ Estonia

Population: 1,328,976

people with disabilities 123 917 (dec. 2022)

Surface Area: 45,340 km²

GDP per capita 43494 USD in **2021** (OECD)
year 2000 – 9408.7

□ State providers

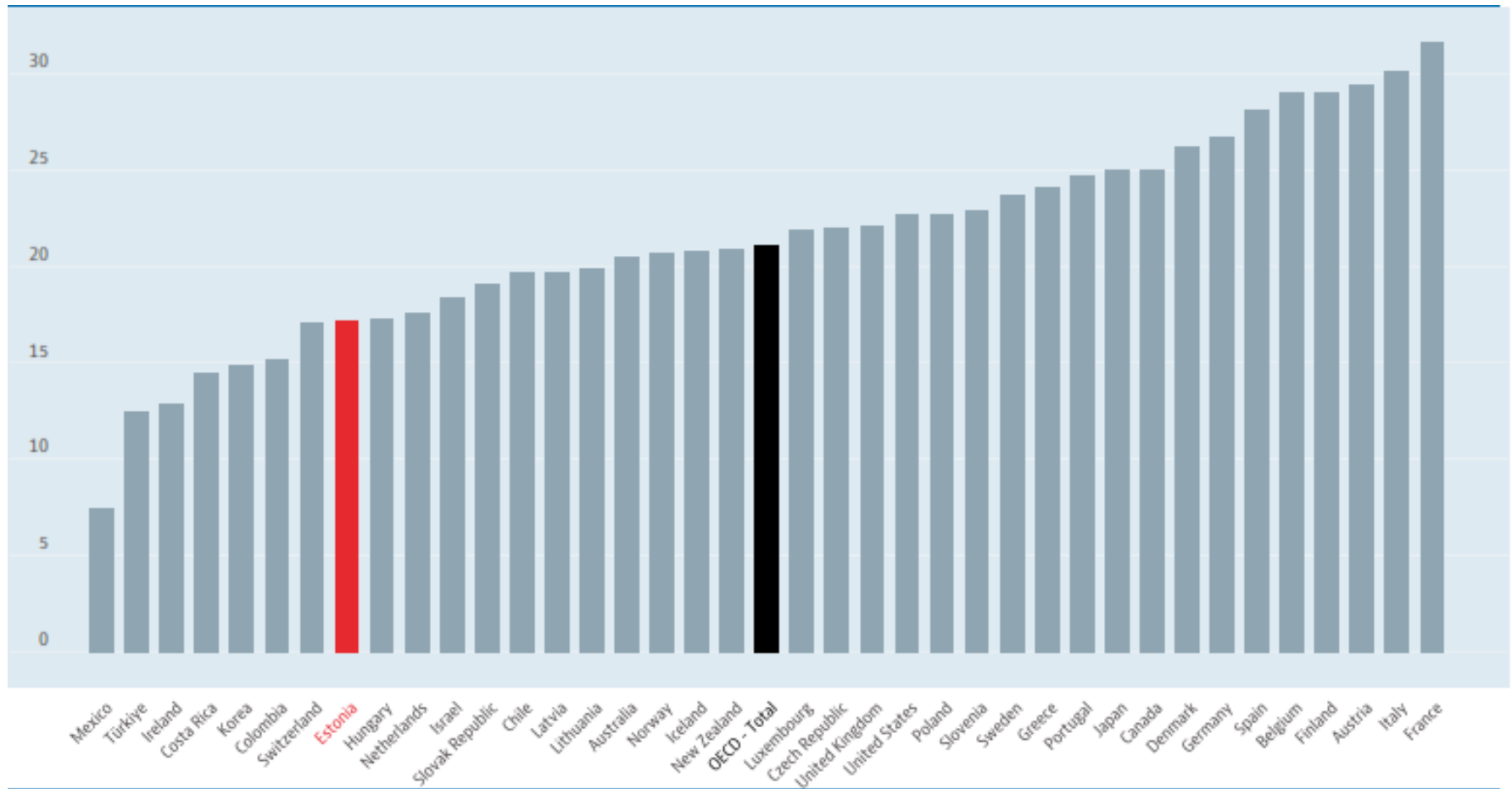
3 - Viljandi county, Järva county, Tallinn

□ Private providers

20 – 2-3 in Tallinn area, 2 in Tartu area



Social spending



The Estonian Chamber of Disabled People

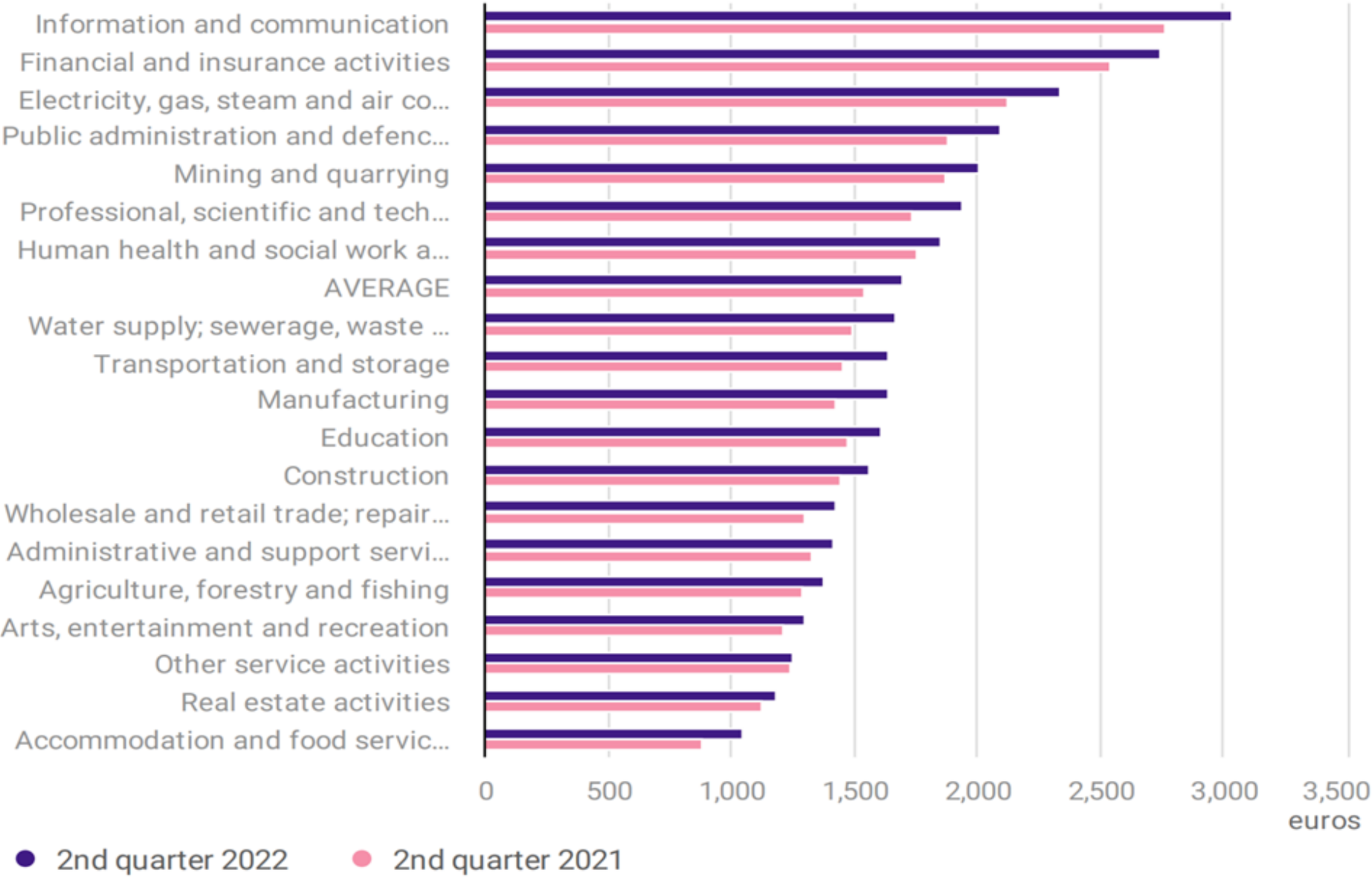
Developing services

- Focus on children – enabling assistance for children with disabilities
- Ratifying the UN CRPD – 2012
- Municipal reform 2017 – 79 units remaining
- Dismantling institutions – ongoing
- 2018 – establishing the interval independent living provision
- Availability of services despite administrative status
- Persons with autism needs to be addressed



Average monthly gross wages and salaries by economic activity, 2nd quarter, 2021–2022

Source: Statistics Estonia



Tartu Maarja Support center

- Tartu Maarja School



- City of Tartu

TARTU

- Support center



- Maarja village



Profile

- 1994 – Maarja school is established
- 2002 – Maarja Support center started
- 2006 – adding activities and employment support center
- 2010 – providing independent living starts
- 2010 - new facilities for activities in separate unit
- 2014 - accepting permanent residents of independent living – 4 permanent
- 2019 – new premises for independent living provision

5 main services working with total number of staff 77

25 directly involved with independent living interval provision





Estonian Agrenska Tammistu center

□ University of Tartu



□ University Hospitals



□ Estonian Chamber of Disabled People

□ Ågrenska family center in Sweden



□ Stenströms Skjortfabrik Estonia Ltd.



Profile

- 2003 – legally up and running, activities the same year
- 2005 – 1st international conference on care for children with disabilities /7 countries/ renovation starts
- 2006 – child-care legislation adopted in Estonia
- 2007 - funding for new child-care unit adopted
- 2015 - main building fully refurbished
- 2019 – start of construction (renovation) of new units
- 2021 – inauguration of 2 new units for child care and for interval provision of independent living for adults, reinforcing the rare diseases agenda

4 main units working with total number of staff 170 – mostly working part-time

12 directly involved with independent living interval provision







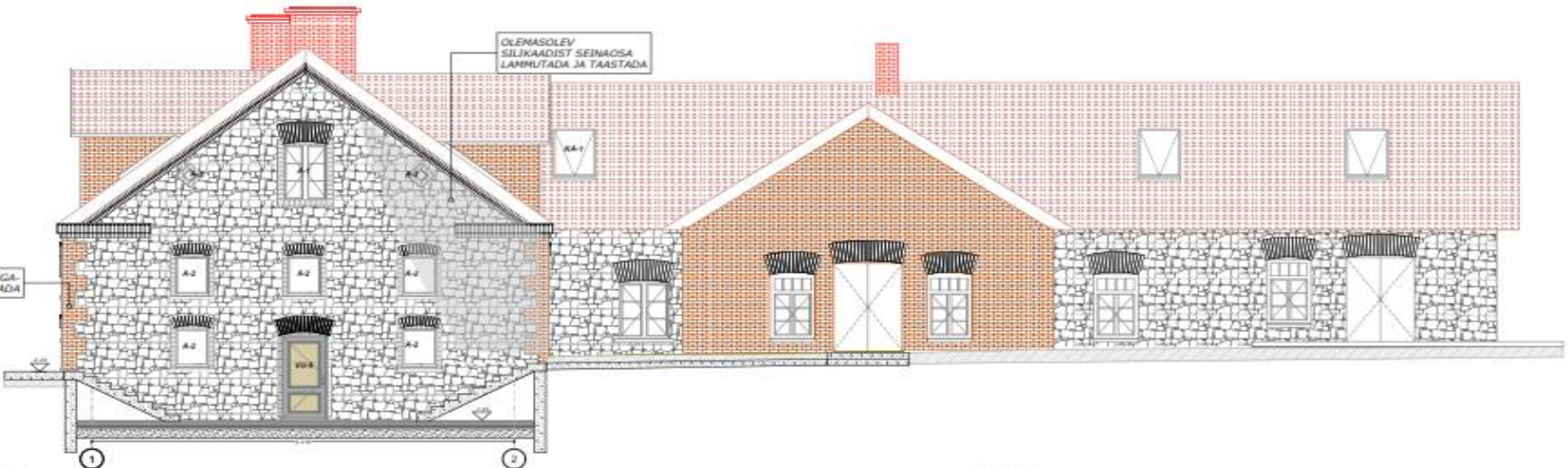
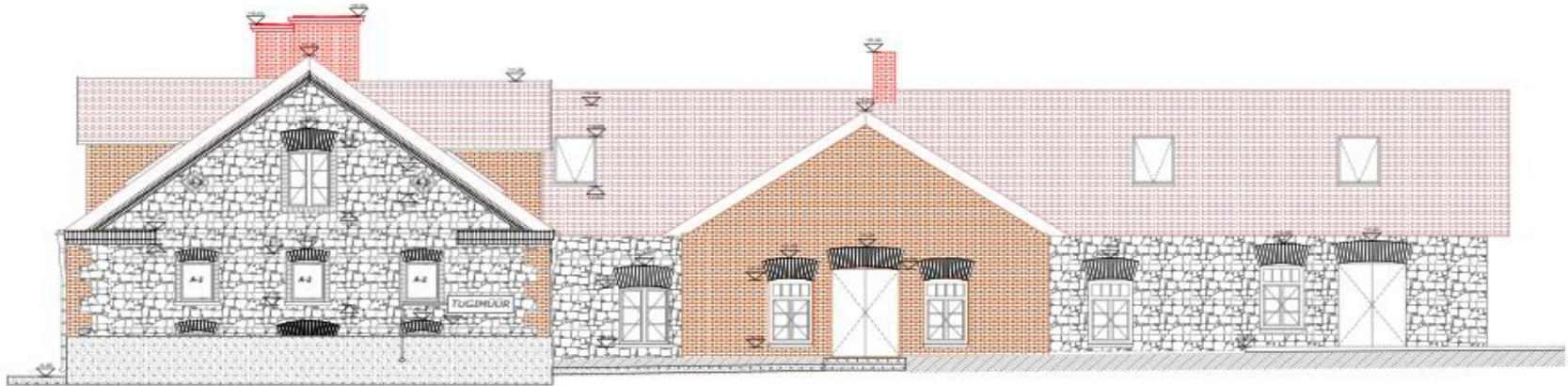


**13 places for interval care for young adults and
refurbishing activity space for 7 people undergoing labor
market adaptation (EU funding)**





Interval care unit for adults - outside drawing



MÄRKUSED

1. MAAKIVISEINTELT EEMALDADA TSEMENTMÖRDIGA TEHTUD KOHTPARANDUSED. VUUGID TÄITA LUBIMÖRDIGA, SUUREMATES VUUKIDES KASUTADA KIVITUKKE, SARNASELT ALGUPÄRASELE EHTUSVÕTTELE.
2. TELLISKAMISTUS JA KARRSILLUSED SÄILITADA JA RESTAUREERIDA.
3. TSEMENDIGA KAETUD VEELAUAD VÄLJAST POOLT EEMALDADA, PAIGALDADA UUED TELLISEST VEELAUAD, MILLELE ANDA SADEVETE ÄRAJÄTMISEKS KALLE LUBI-TSEMENTKROHVIGA. SÄILIND TELLISTEST VEELAUAD RESTAUREERIDA.
4. TELLISKIVIST KARNIIS RESTAUREERIDA, SILIKAADIST KROHVITUD KARNIIS EEMALDADA JA TAASTADA ORIGINAALI EESKÜLA.
5. RESTAUREERITAV TELLISEST KORSTEN. KORSTNAPITSIDELE PAIGALDADA VÕIMALIKULT SILMATORKAMATUD PLEKIST MITSID

VIIMISTLUS

KATUSEKIVI - MARSEI NATURAALPUNANE (ANALOOG LÄÄNETIIVA KATUSEKIVILE)
 AKNARAAMID - VALGE
 KORSTNAD - PUNAINE ALINKERTELLIS
 SADEVEESÜSTEEMID, VIILUSERVAPLEKID - HALL

nasa oü

Reg nr 10077001 | Harjumaa aadress 11, Tallinn, 10111
 ROVIN OÜ
 Reg nr 10077001 | Harjumaa aadress 11, Tallinn, 10111
 Puhelnumbriga 100 00 00 00 | E-postiga 100 00 00 00

SA Eesli Agrenska Fond

SA Eesli Agrenska Fond

joonis: VAADE-KIRDEST

objekt: Tammistu mõisa pinnakoda, Raede, Tammistu küla, Taru vald, Taru maakond

staadium: EP

kuu number: 74-2018

arhitekt:

Maria Tõllar, Märt Sõbi

mõõkava: 1:100

kuupäev: 22/04/2019

leht nr:

Benefits and challenges of the model

- Based on need – individual is able to decide the length and interval of the stay
- Difficult to plan staff
- Small units with high satisfactory level
- Often known environment from earlier stays
- Cannot stay for good if the setting suits well
- At times the need to adapt to other persons trying out the possibility (can be avoided but not 100%)
- Staff issues (low salary levels)





HOME SUPPORT SERVICE



PERSONAL ASSISTANT SERVICE



SUPPORT PERSON SERVICE



SOCIAL TRANSPORTATION SERVICE



OFFERING ACCOMMODATION SERVICE

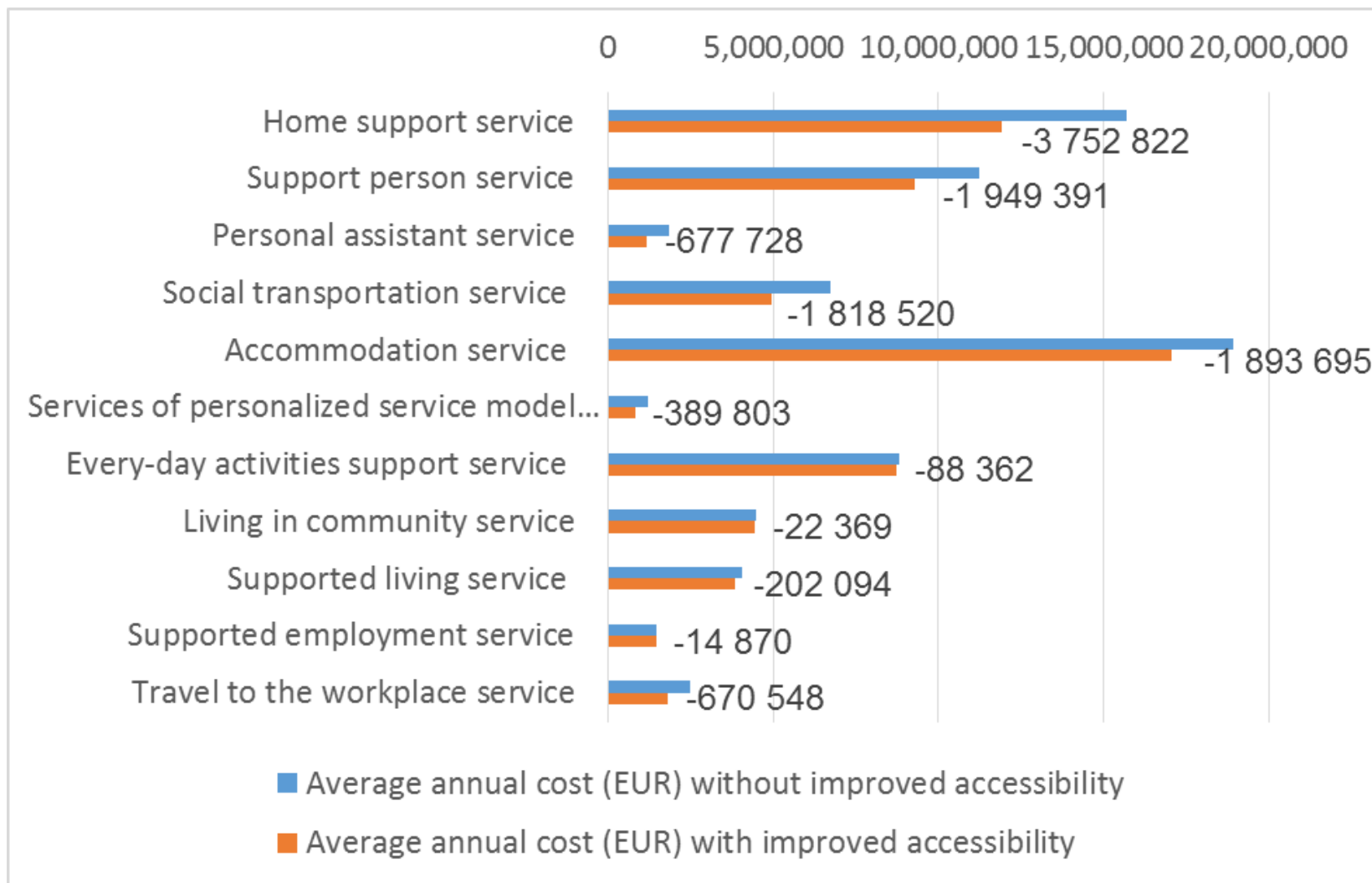


UNEMPLOYMENT BOARD TRAVEL TO WORKPLACE SERVICE



SERVICES OF PERSONALISED SERVICE MODEL FOR SPECIAL CARE





Savings in accessibility

- 7 services analyzed for financial impact if offered in an accessible way
- State agency only to contract fully accessible providers
- Change of attitude towards accessibility
- Always secure also accessibility of content
- Annual saving estimated to be 47 million EUR
- Advocating for increasing rates and diminish waiting lists
- Improve the legal environment further









EESTI PUUETEGA INIMESTE KODA
ESTONIAN CHAMBER OF PEOPLE WITH DISABILITIES



RARE DISEASES

BIG IMPACT



Veelrool 2021



Elis harvhaigusega: tavalisi okei on olla arsti

Me kõik võime olla mõne harvhaiguse kandjad

Harva esinevate haigustega inimeste raski rahastamine – vajatakse ja võimalused

Eesti Puuetega Inimeste Koda