



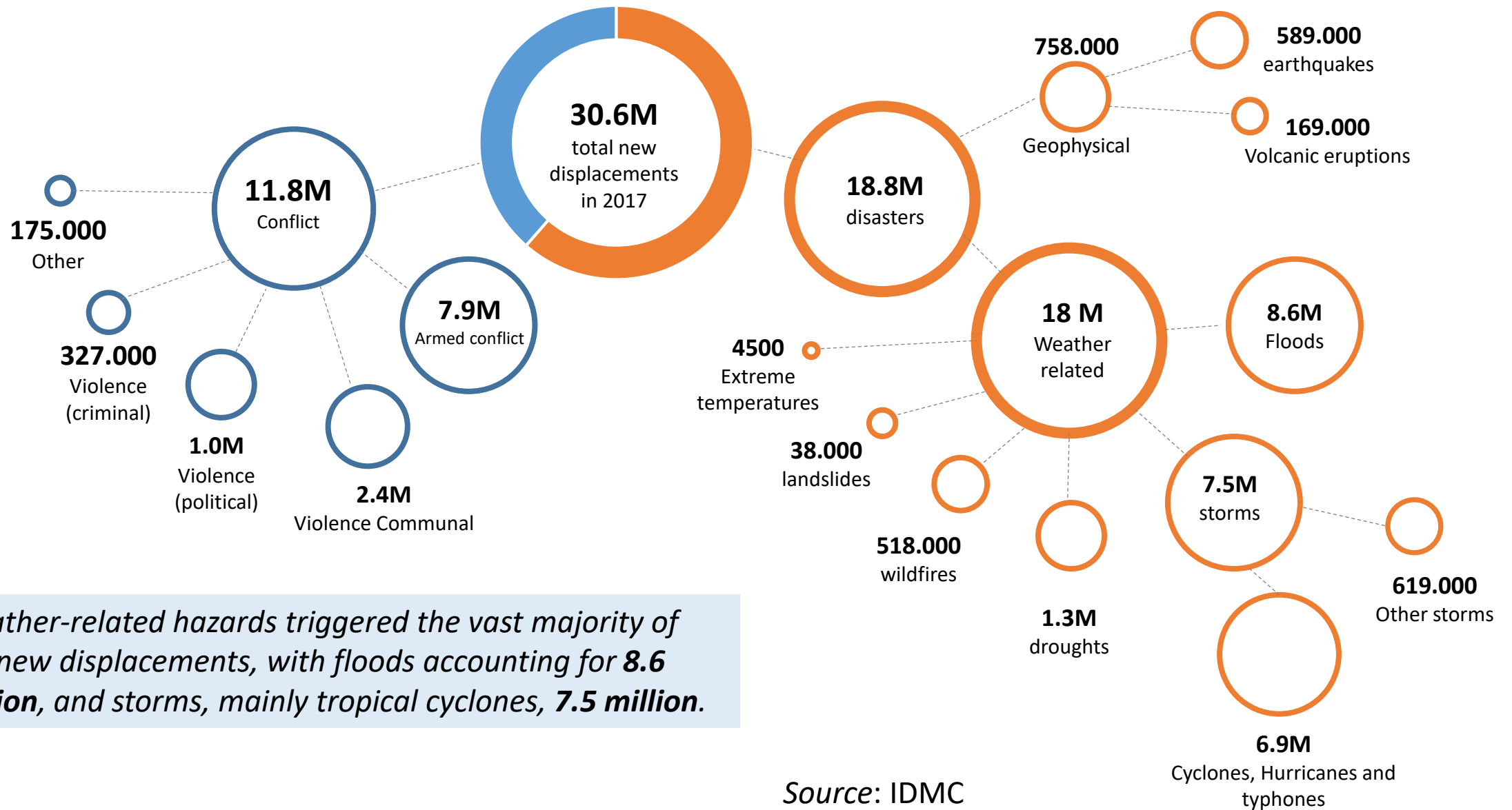
Module C:
Crises, Conflict, Climate Change and Migration



Crises, Conflict, Climate Change and Migration

- The 2030 Agenda makes reference to climate change throughout its targets, recognising that the **adverse impacts of climate change and other stressors** represent a serious threat to development.
- Reinforces important international frameworks such as the **Sendai Framework for Disaster Risk Reduction** and the **Paris Agreement under the United Nations Framework Convention on Climate Change (UNFCCC)**.

Overview of Global Displacement in 2017



Weather-related hazards triggered the vast majority of the new displacements, with floods accounting for 8.6 million, and storms, mainly tropical cyclones, 7.5 million.

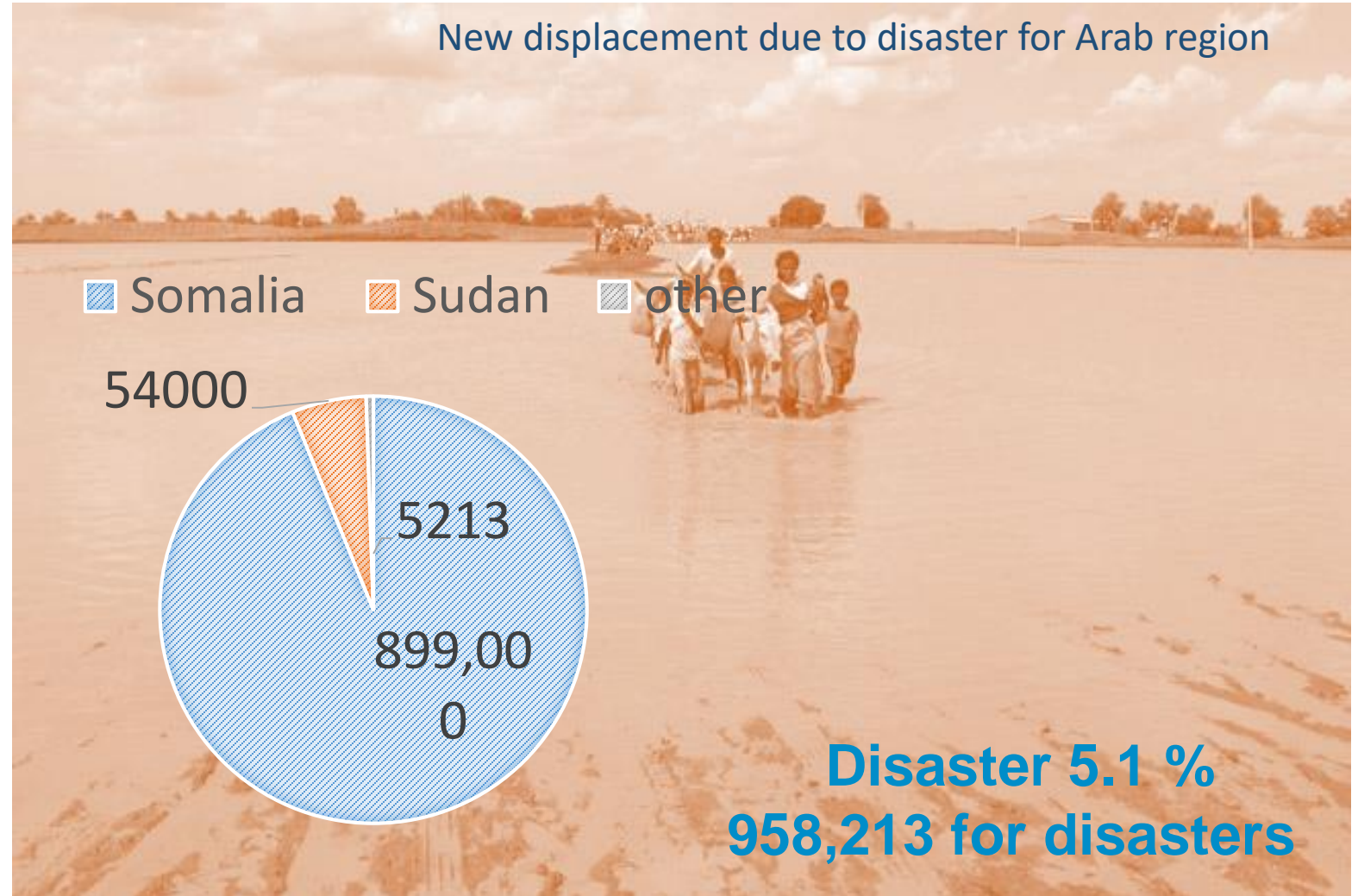
Source: IDMC

MENA versus Arab Region in 2017

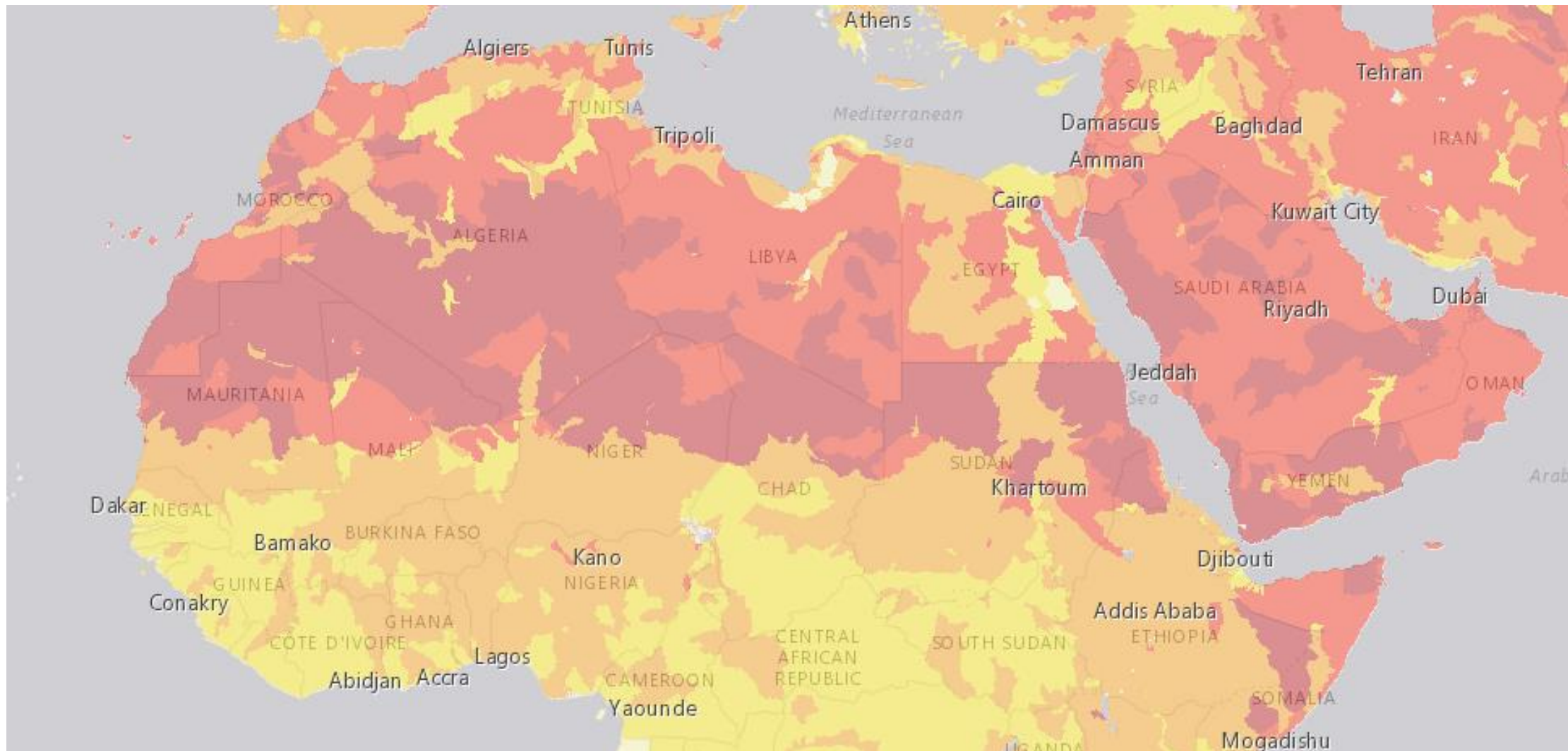


CONFLICT 38.1%
DISASTERS 1.3%
OF THE GLOBAL
TOTAL

4.5M for conflict
233,000 for disasters



Overall Water Risk Arab Region



Low risk (0-1)

Low to medium risk (1-2)

Medium to high risk (2-3)

High risk (3-4)

Extremely high risk (4-5)

No Data



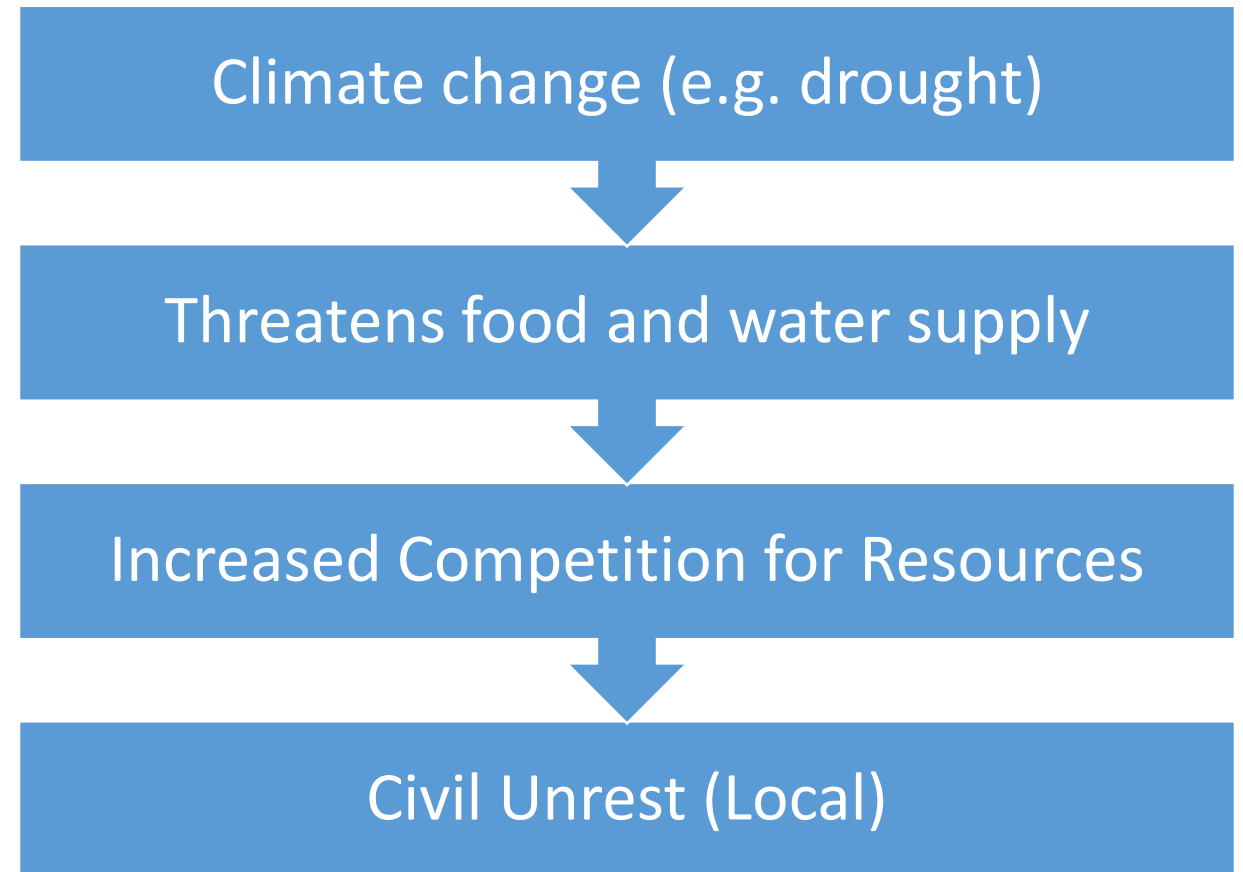
Impacts of Climate Change that will Drive Disaster Risk

- **More severe and frequent drought**
- **Decreasing agricultural yields in warmer environments due to heat stress**
- **Rising sea levels**
- **Decreasing resilience,**



Climate Change and Conflict in relation with Migration

Climate change **indirectly** affects conflict risk through other factors.



Main Relevant Targets



- ❖ **Target 1.5:** “By 2030 **build the resilience** of the poor and those in vulnerable situations, and reduce their exposure and vulnerability to climate-related extreme events and other economic, social and environmental shocks and disasters”



- ❖ **Target 11.5:** **Reduce deaths and mitigate negative impacts of disasters.** Migration and migrants should be included in implementation efforts of this target, in disaster risk reduction and management as above and in emergency response and early warning systems.



- ❖ **Target 13.3:** calls to “Improve **education, awareness-raising** and human and institutional capacity on **climate change mitigation, adaptation, impact reduction and early warning**”.



- ❖ **Target 13.1:** “**Strengthen resilience and adaptive capacity** to climate-related hazards and natural disasters in all countries”. Migration should be **recognised as a potential climate change adaptation (CCA) strategy and disaster risk reduction (DRR) measure** to climate change impacts.



Recommendations

- **Disaster Risk Reduction and Prevention** should be prioritized
- Migrants should be **included in all targets** relating to DRR and management, including on Early Warning Systems
- Migration should be recognised as a potential **Climate Change Adaptation (CCA)** strategy and way to build resilience
- Education and awareness-raising efforts on climate change should include the **mobility dimensions of climate change**

