

E

Distr.
LIMITED



E/ESCWA/SDPD/2009/IG.1/5(Part III)
9 January 2009
ORIGINAL: ARABIC

()

2009 / 6-5

() 6

()

2006 / 1 ()

5 4

2007 /

2007 /

.2020



3	2-1		-
3	1	-	
3	2	-	
3	3 2007 /		-
4	7-4		-
4	4	-	
5	5	-	
5	6	-	
5	7	-	
6	24-8		-
6	10-8	-	
6	13-11	-	
8	18-14	-	
			-	
11	20-19 2020		-
			-	
13	24-21		
14	25		-

-

-

()

-1

()

-

-2

:

2020-2005

()

()

()

()

(•)

2007 /

-

/

:

-3
2007

MS. Project : ()

: ()

: : ()

(1)

(2)

: ()

: (1)

(2)

(3)

.2020

-

-5

() :
()

()

25 22

-

-6

() :

()

()

()

(●) 2020

-

-7

2008 / 16 15

60

:

(/)

()
()
()
()
(●)
()

()

-

-

2005-2000

-8

2 735

1 855

9 134

8

9.5

14 396

-9

77

.2005

23

-10

/

1 722

2005

/
666

-

-11

-1

()
(2005)

		.. 1 676	... 5 492	:		()
(/)	()	()	()	()	()	
	(..)	()	(...)	()		-
165 771	701	40.91	2.80	307.55	5.60	
124 328	526	61.36	4.2	230.66	4.20	-2

)	-3
41 443	175	10.23	0.70	76.89	1.4	(
296 019	1 252	146.10	10.00	146.10	10.00		-4
627 560	2 655	258.60	17.70	1 164.30	21.20		

() 1

.. 557		... 2097		:		()
		70 :		/		(1-)
.. 390		... 1 467 :				
(/)	()	()	()	()	()	
	(. .)	()	(. . .)	()		
44 307	187	10.92	2.80	82.20	5.60	-
33 230	141	16.38	4.20	61.65	4.20	-
) (-
11 077	47	2.73	0.70	20.55	1.40	
79 120	355	38.99	10.00	146.79	10.00	-
167 734	710	69.01	17.70	311.19	21.20	
.. 167		... 629 :		30 :		/ (2-)
6 782	29	3.34	2.00	12.58	2.00) (-
10 173	43	8.36	5.00	18.87	3.00	-
132 243	559	70.18	42.00	245.35	39.00	(Chillers) -
8 138	34	4.01	2.40	15.10	2.40	-4
3 391	14	1.67	1.00	6.29	1.00) (-5
190 391	680	87.56	52.40	298.19	47.40	
358 125	1 389	156.57	28.11	609.39	29.06	(2- + 1-)
.. 223		... 841		:		()
		70:		/		(1-)
.. 156		... 589 :				
17 769	75	4.37	2.80	32.97	5.60	-
13 327	56	6.56	4.20	24.73	4.20	-
) (-
4 442	19	1.09	0.70	8.24	1.40	
31 731	134	15.61	10.00	58.87	10.00	-
67 270	285	27.63	17.70	124.80	21.20	
.. 67		... 252 :		30 :		/ (2-)
4 080	17	2.01	3.00	7.57	3.00) (-
4 080	17	3.35	5.00	7.57	3.00	-
53 036	224	28.10	42.00	98.40	39.00	(Chillers) -
3 264	14	1.61	2.40	6.06	2.40	-4
1 360	6	0.67	1.00	2.52	1.00) (-5
190 391	278	35.72	53.40	122.11	48.40	
257 661	563	63.35	28.41	246.92	29.36	(2- + 1-)
1 243 345	4 607	479	21.34	2 021	23.97	()

1 -12

2005

-13

9 () 9 22 () 4

1 ()

()

479 ()

23.97

1 21.34

()

:

55 (•) 59

17 13 ()

1

2005

4.6 1.24 ()

2005

.1 -

-14

:

:

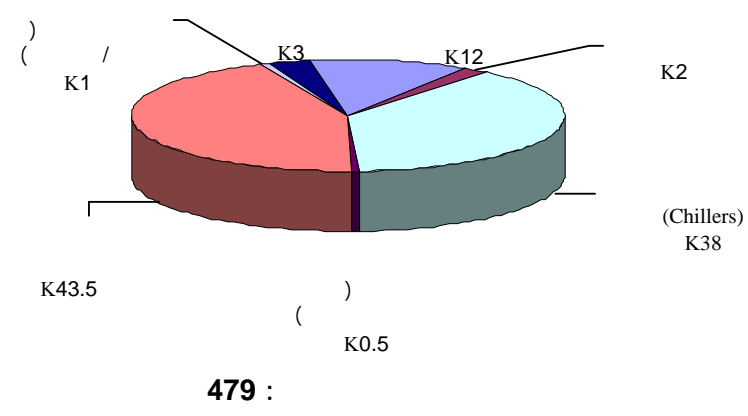
()

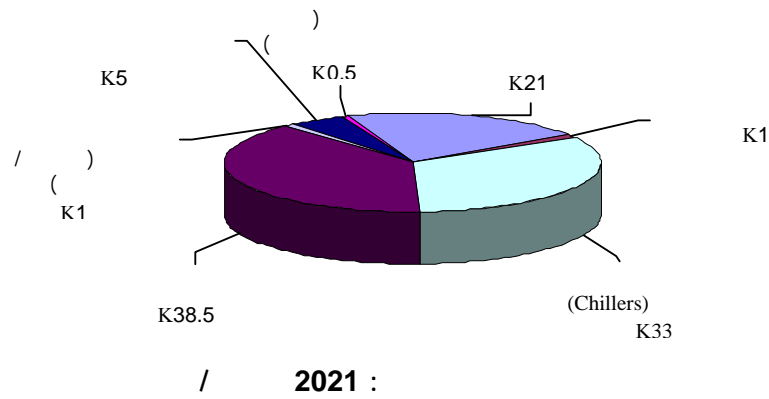
(1)

-10-

/ (2)
 (3)
 : ()
 (1)
 (2)
 (3)
 (4)
 (5)
 (6)

(2005) -1
 -





-15

3.8) 22 96
 313.3 (11.6) 2005
 .2 (2.6

-2

(2005)

()	()	()	()	(DSM)	
			/	()	
-	-	-	10.9		-1
-	-	-	26.2	()	-2
-	-	-	30.6	()	-3
()					
75	17 739	32.9	-		-4
138	32 588	60.5	9.8		-5
323	76 377	141.7	5.7	()	-6
37	8 729	16.5	2.6		-7
123	29 096	54.0	8.7		-8
18	4 366	8.1	1.3)	-9
(

714	168 895	313.3	95.9	
-----	---------	-------	------	--

-16

()

(-2)

()

()

.(-2)

:

-17

2

-18

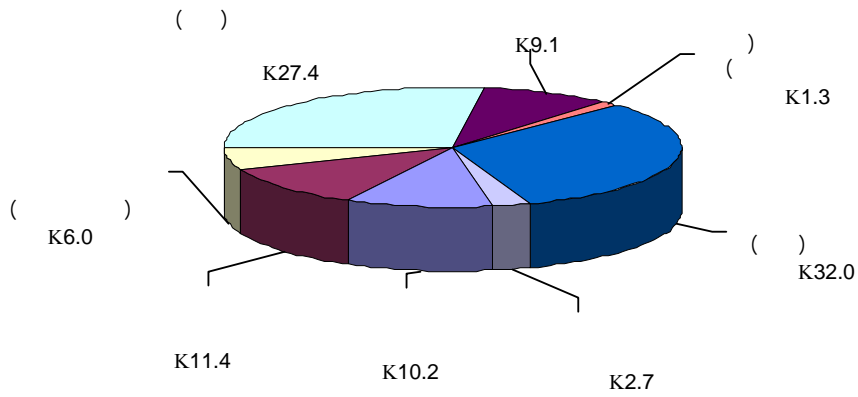
714

169

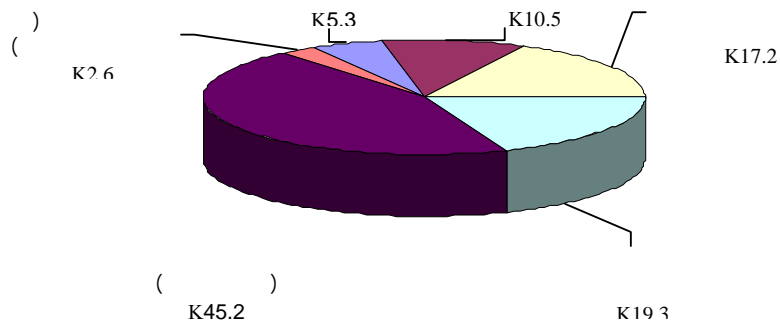
-2

(2005)

-



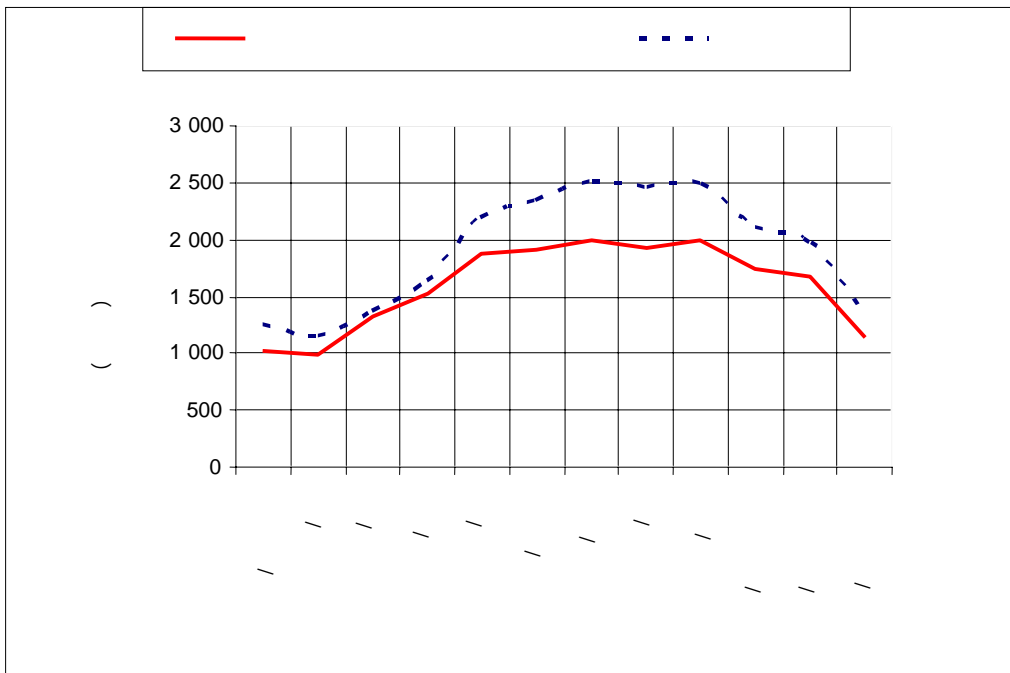
96 :



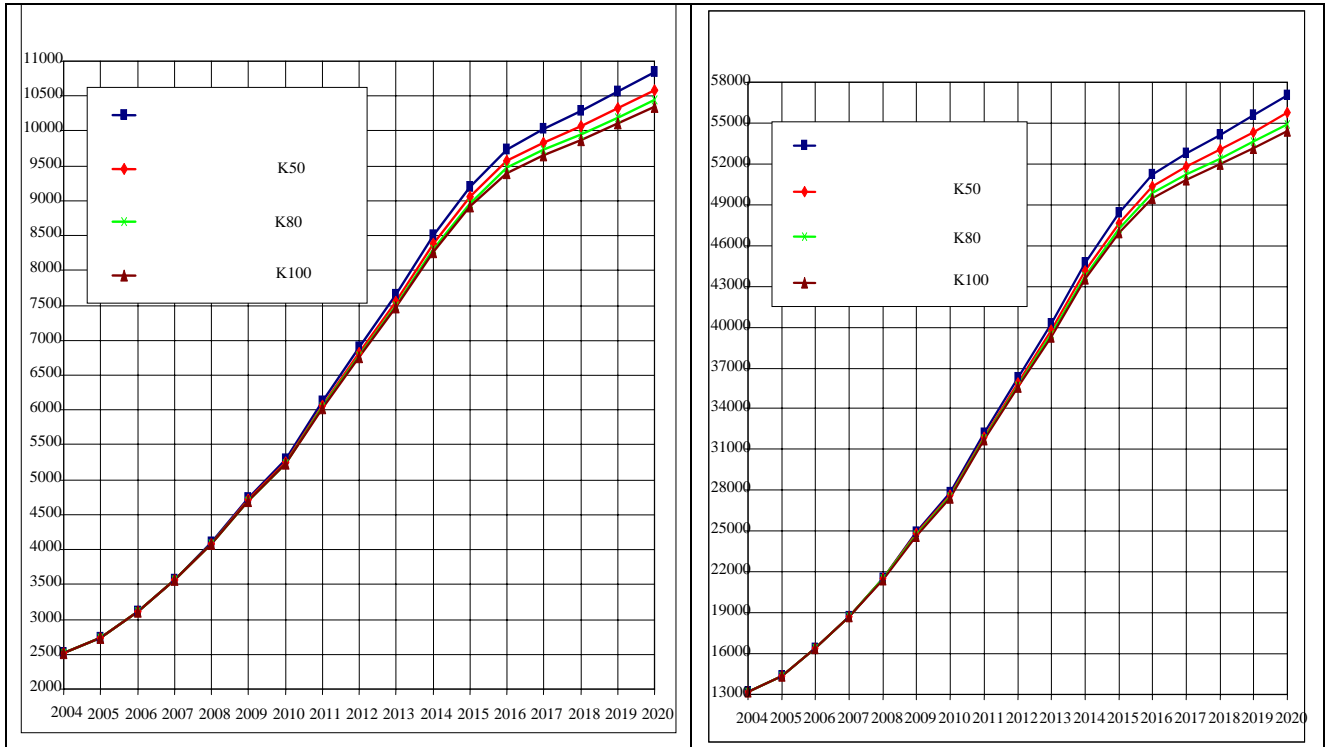
313 :

2020

(2 1)) 19) 2.324 -19
 22.3) 550 / 2005 ()
 .3)
 () -3



2020



() 2020
 57 064 2020 54 411
 10 841 2020 10 337
 4
 2020
 (BTU 5.5)
 5.1 4.1 2.6 (BTU 0.57)
 3.2 2.6 1.6
 50
 100 80
 -
 -21
 (2004-1990 6.8)
 (5)
 60)
 .(

-15-

_____ -1

:

-22

:_____ ()

:_____ ()

:_____ ()

:

:

(())

_____ -2

-23

.((2020-2009))

_____ -3

/

-24

325

3

550

-16-

92

(2006)

5.4

19 / 2.33

1.3 574

.

-

7 -25

:

()

()

()

.
