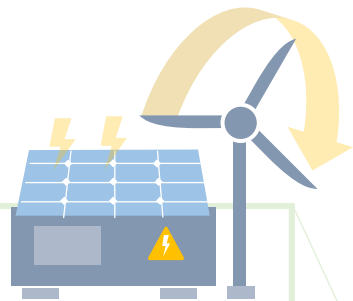




Gender equality and social inclusion in community engagement for productive uses

Dec 2022, Kevin Johnstone

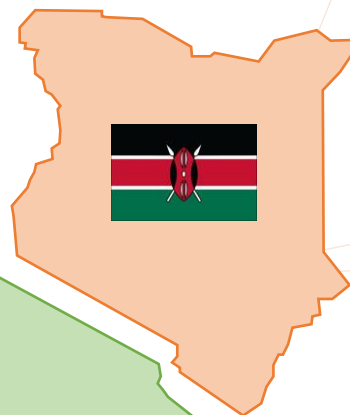
Building livelihoods via mini-grids



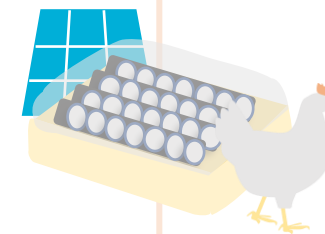
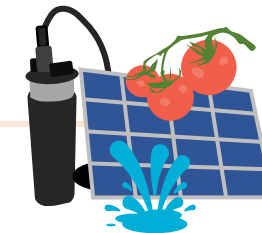
rafikpower



Kitui Central
Kitui East
Kitui South
Mwingi Central



RE solutions for female, poultry and horticultural farmers



UKPACT

Better delivery of solar irrigation pumps for female farmers



SUSTAINABLE AGRICULTURE TANZANIA
SOLUTIONS FOR A BETTER FUTURE



Chang'ombe
Dongo
Kibaigwa
Msufini
Mlali
Kiroka
Ikondo
Matembwe
Barikiwa
Nakopi
Mbaya



Initial engagement with GESI - some learnings

- Key notion: Don't exacerbate gender inequalities (do no harm)
- Consider different categories of socio-economic data points, groups, and power dynamics
- Some suggested guiding questions:
 - a. Who are you engaging? What stakeholders are engaged in shaping the agenda?
 - b. What types of women's organizations? Other categories such as youth groups, etc?
 - c. Who are the farthest to reach?
 - d. Who doesn't belong to organized groups? How can they be reached?
 - e. How are the people that traditionally don't take part in decision making?
 - f. Devise different mechanisms to engage people - Religion? Festivity?

Questionnaire example

Farm activity	Mainly Women	Mainly Men	Equally Shared (men and women)	Hired man labour	Hired women labour	Not applicable	Other (specify)
Ploughing							
Hoeing							
Planting							
Weeding							
Applying fertilizer/pesticides							
Irrigation							
Harvesting							
Shelling/threshing maize/beans/groundnuts/rice							
Post-harvest cleaning and sorting							
Marketing decisions (selling, transport to market, negotiating, etc.)							

Ongoing engagement with GESI - some learnings

- Consider 'pre-workshops'
- Consider participants' various schedules
- Aim for gender balance for facilitators
- Identify any challenges for attending events/workshops and consider solutions to support participants
- Excellent facilitation and management of workshops is critical
- Provide safe spaces to discuss



Specific GESI learnings from Kenya

- Expand efforts to strengthen groups to reach more people experiencing marginalisation
- Extension services curricula must be redesigned to integrate gender and inequality
- Empowering women increases agricultural yields for both female and male managed farms — a rare win-win scenario.
- Financing due diligence should consider other criteria to make asset-based financing more accessible
- Gender-transformative policies and tools must still be mainstreamed still

<https://www.iied.org/21156iied>

iied International Institute
for Environment
and Development



Caritas



What's next for IIED's energy work?

1

iied International Institute
for Environment
and Development



GENDER Impact
Platform

A framework for 'socio-technical innovation bundles' to support women in technology adoption for PUE

2

iied International Institute
for Environment
and Development



THE WORLD BANK

A framework for 'women's climate leadership' to support a gender just energy transition in the CIF portfolio

