

Poverty and social protection

-

A multifaceted relationship

Amman, 11 December, 2021



UNITED NATIONS

الاستقيا
ESCWA

Shared Prosperity **Dignified Life**





Agenda:

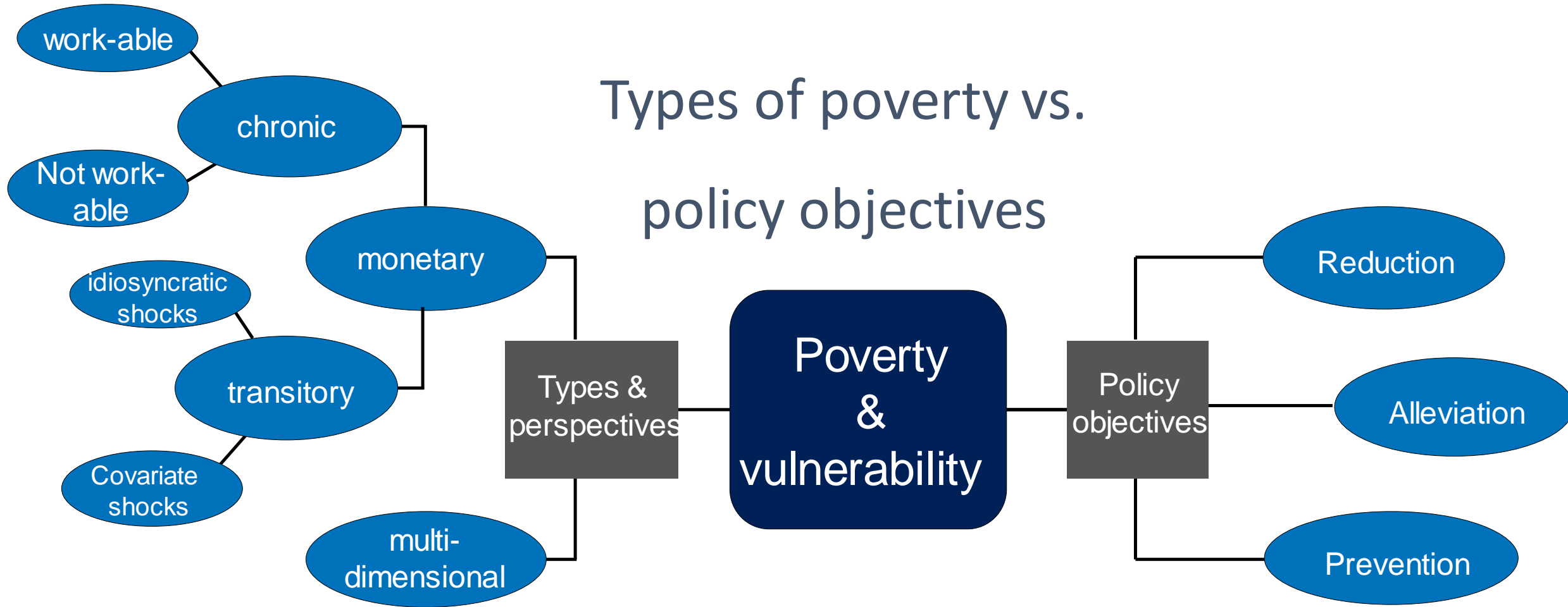


1. Aspects of *poverty* and Social Protection approaches
2. Prevalence of Social Protection approaches in Arab region
3. MPI in Social Protection Policy

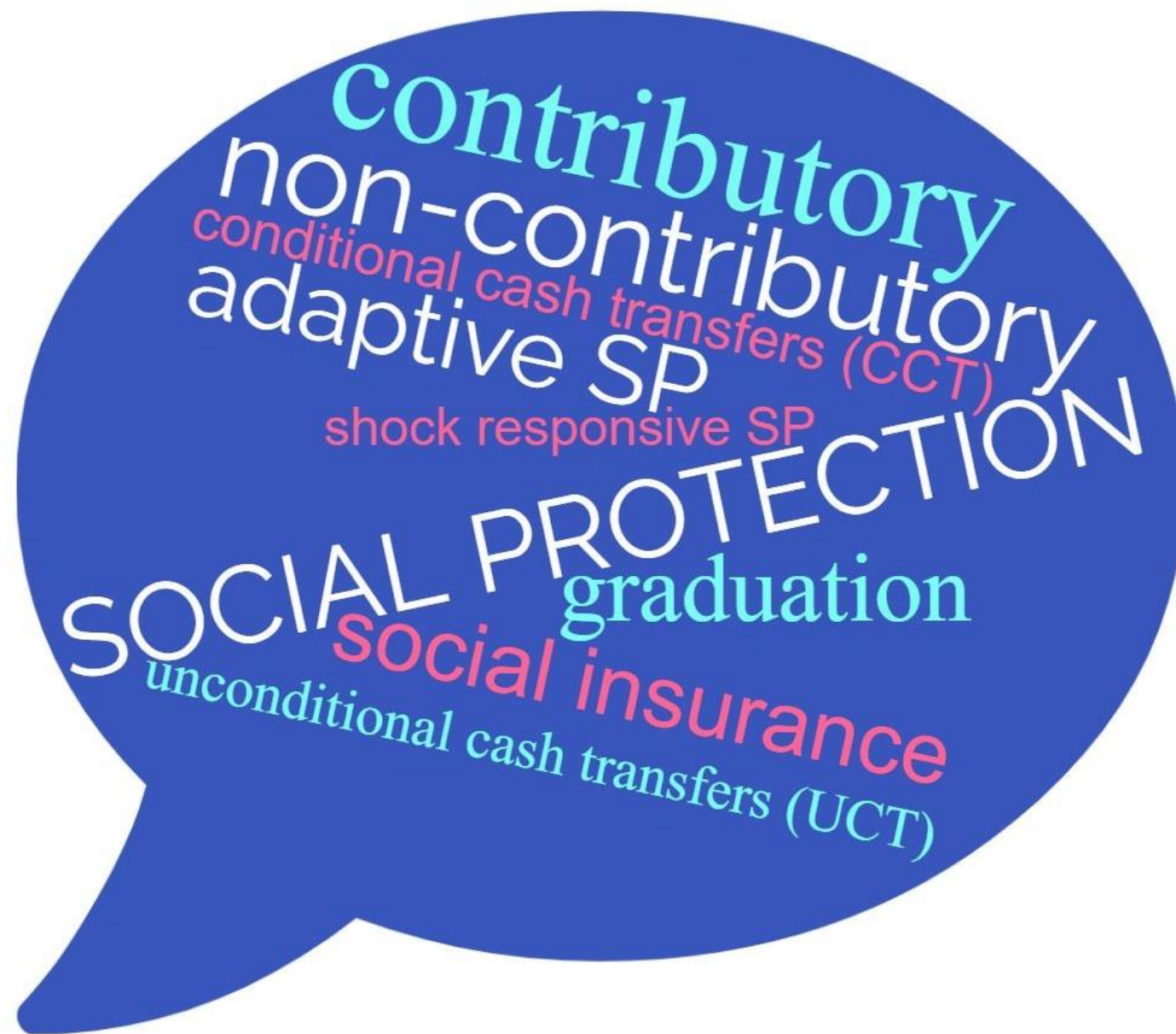
What aspect of
poverty are we
talking about?



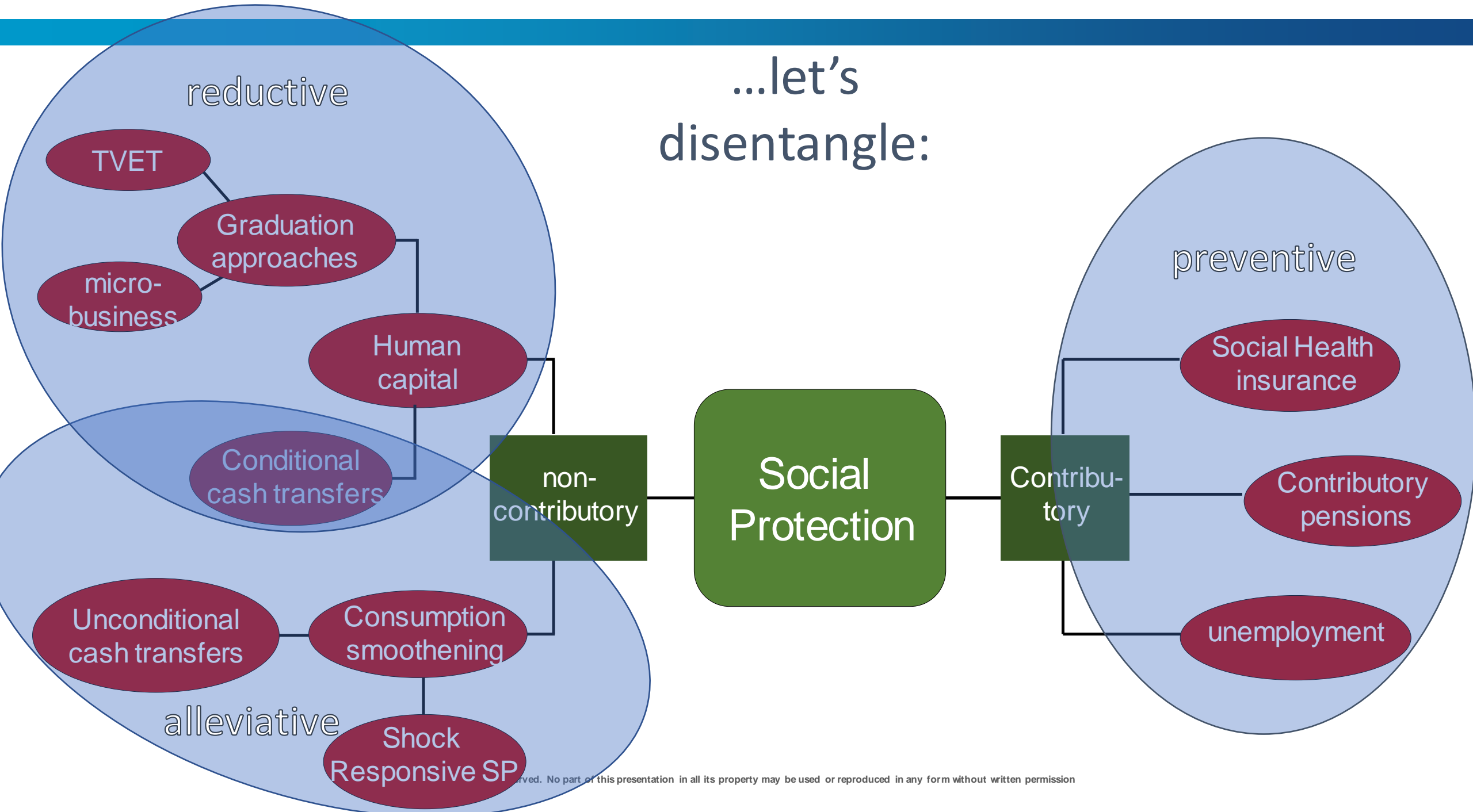
Types of poverty vs. policy objectives



The world of social protection is likewise complex, so....



...let's disentangle:



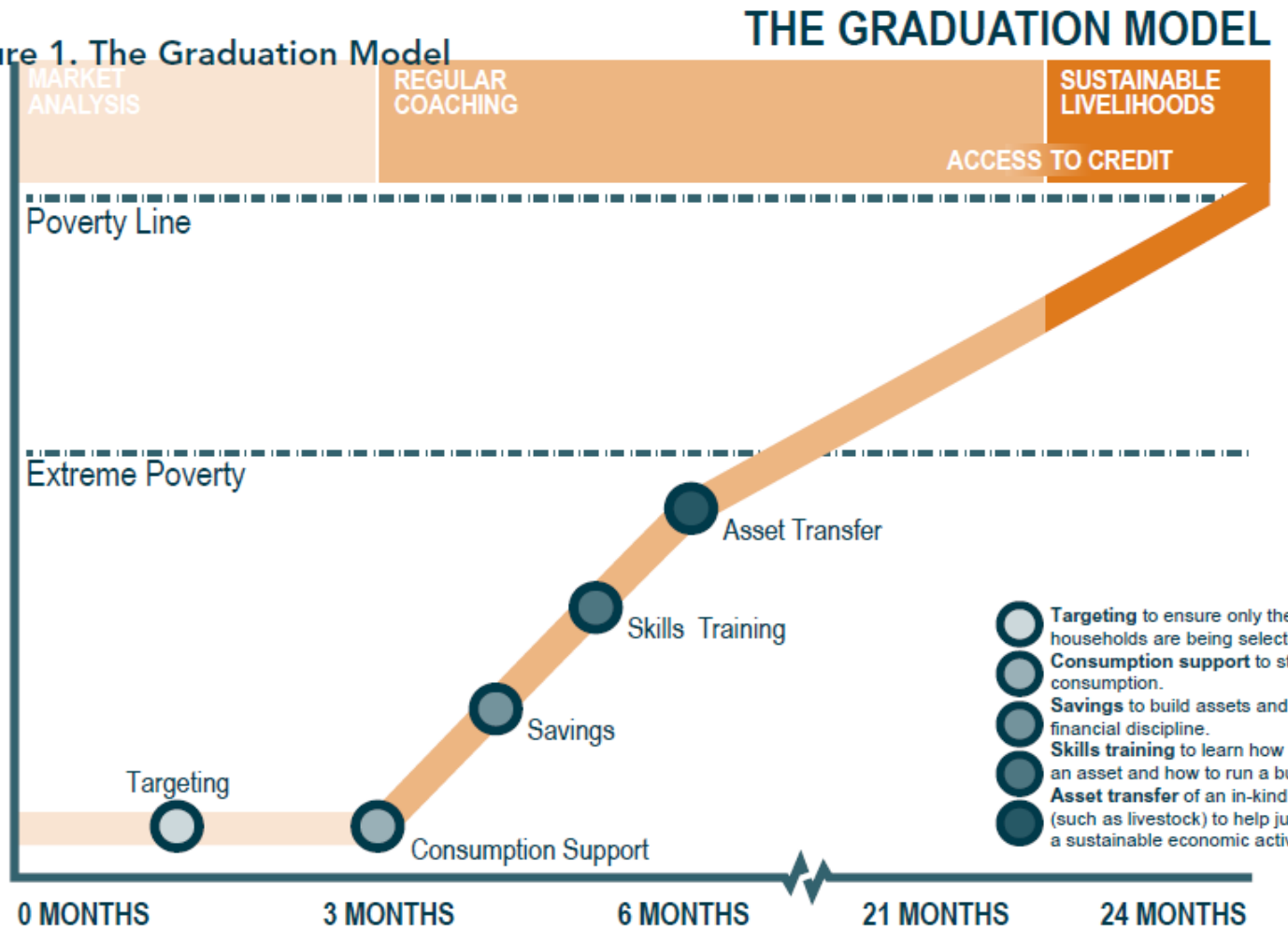
BRAC Graduation Model

INTERVENTIONS

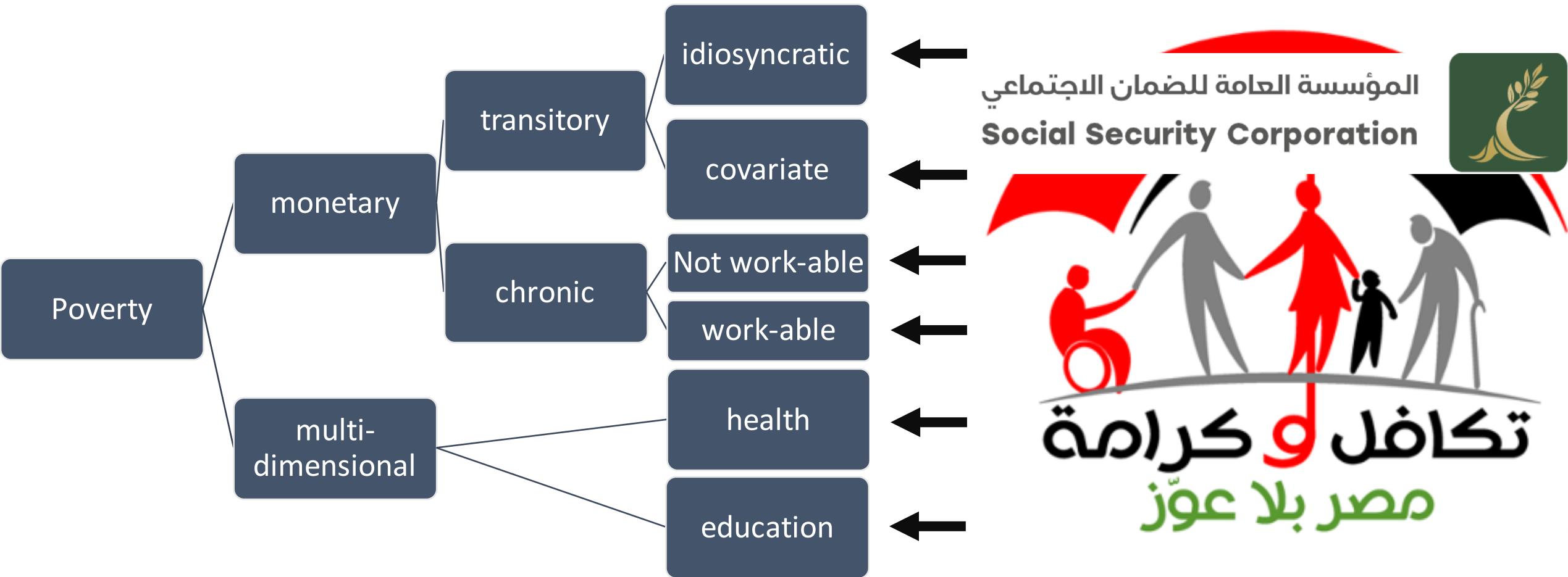
Supported through 24 months programme cycle

-  Asset transfer and interest free loans
-  Enterprise development training through classroom sessions
-  Hands-on coaching
-  Matched savings
-  Healthcare services
-  Community mobilisation

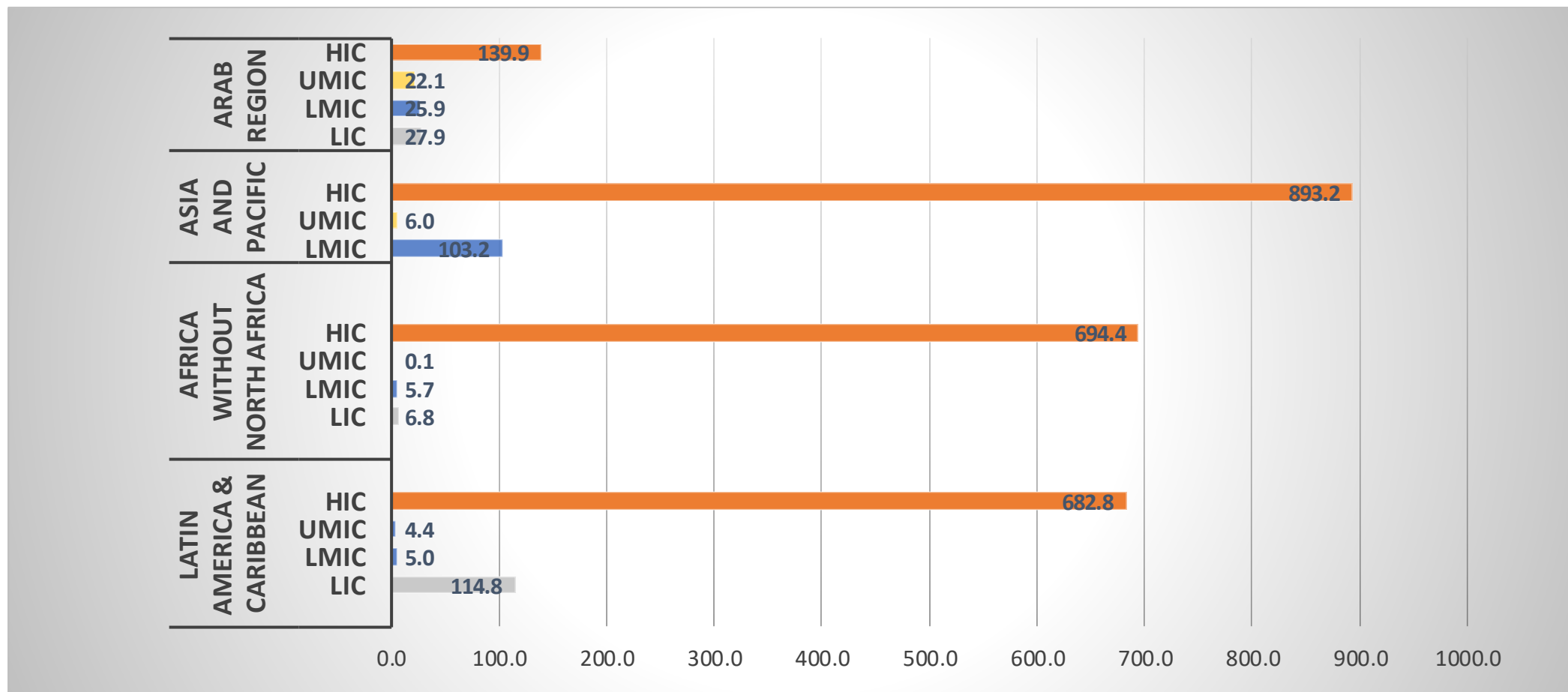
Figure 1. The Graduation Model



How do types of poverty relate to social protection approaches



Social protection expenditure per capita in US\$, by GDP income group 2020 (government announcements)



Delivery Mechanism / Implementation

- Outreach
- Intake & registration**
- Assess needs & conditions
- Eligibility & enrollment decision
- Determination of benefits
- Notification & onboarding
- Payment mechanism
- Services & GRM
- Exit / graduation

SP Strategy Design

- Target groups?
- Targeted / universal?
- Type of benefit (cash/in-kind)?
- Conditional / unconditional?
- Benefit amount & frequency ?
- HH / families / individuals?
- Additional / referral services ?**

**MPI
relevance**



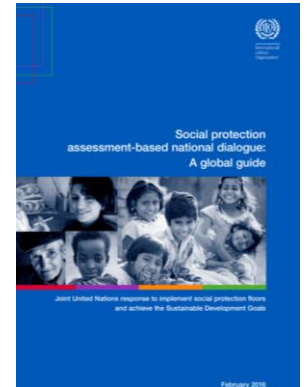
Political will

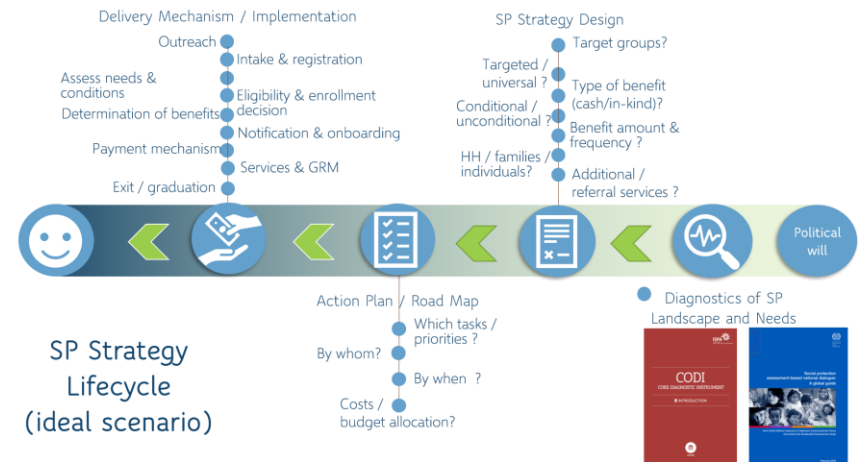
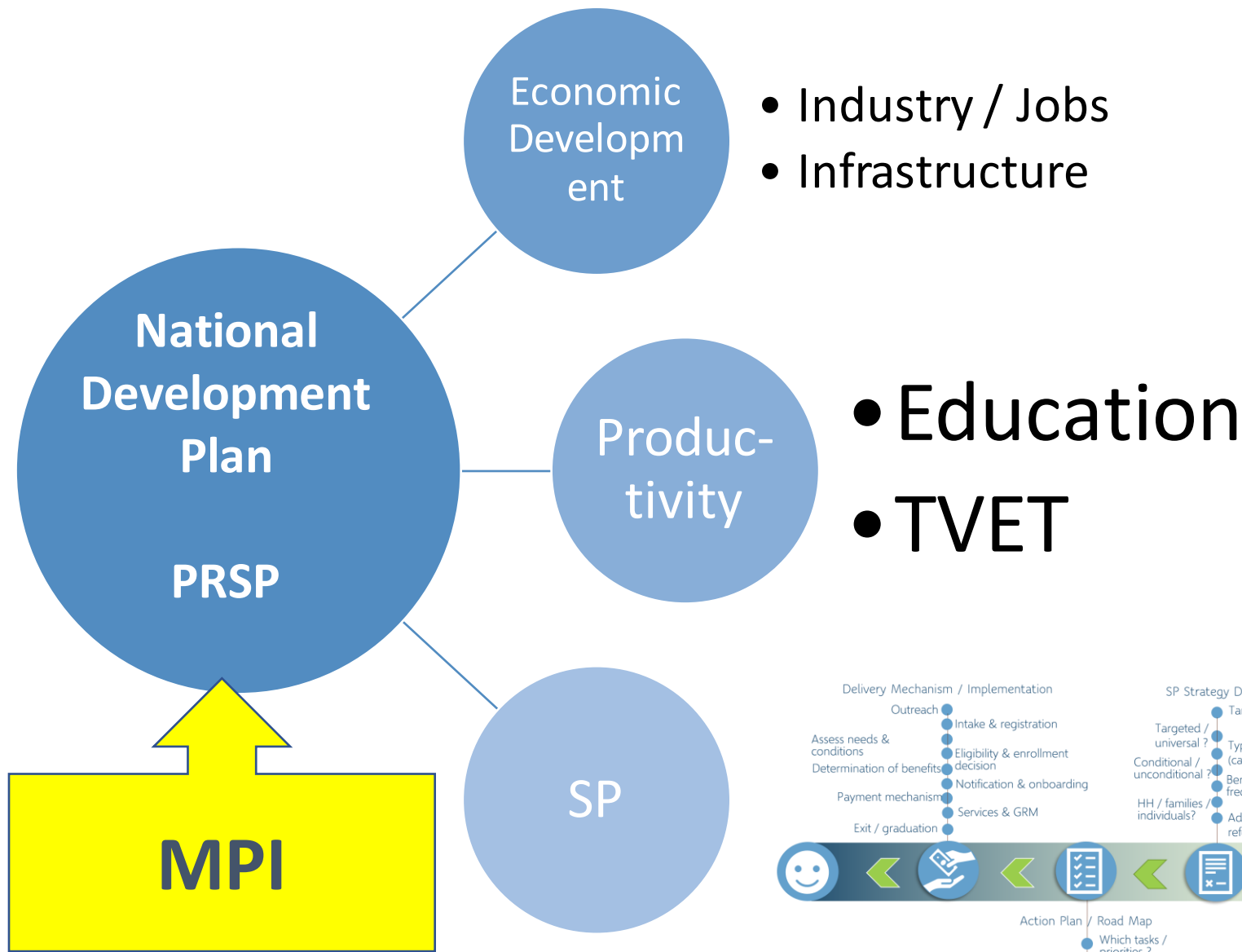
Action Plan / Road Map

- Which tasks / priorities ?**
- By whom?
- By when ?
- Costs / budget allocation?

SP Strategy
Lifecycle
(ideal scenario)

● Diagnostics of SP Landscape and Needs







Question:

What usage do you see for MPI's in beneficiary identification/targeting for Social Protection programmes?