



**UNODC**

United Nations Office on Drugs and Crime



**SDG 16**

PEACE, JUSTICE AND STRONG  
INSTITUTIONS

## MEASURING INDICATOR 16.2.2 ON TRAFFICKING IN PERSONS

GIULIA SERIO, ASSOCIATE EXPERT  
CRIME RESEARCH SECTION  
UNODC



 **Indicator 16.2.2 Trafficking in persons**

 **Current trends and figures**

 **Way forward**



## Indicator 16.2.2 Trafficking in persons

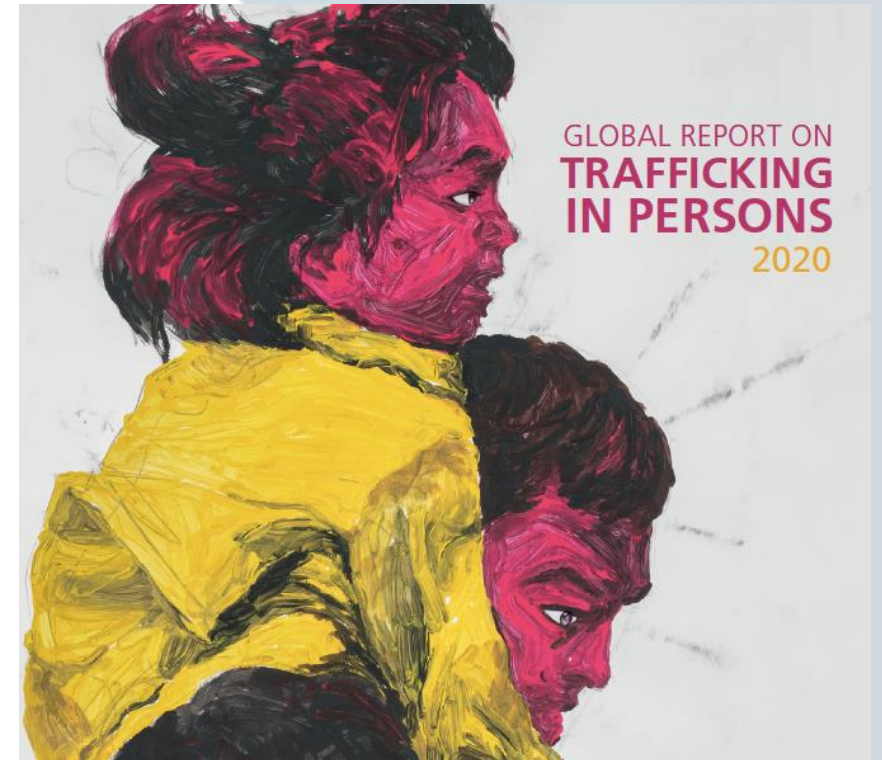
- **Target 16.2:** End abuse, exploitation, trafficking and all forms of violence against and torture of children
- **Indicator 16.2.2:** Number of victims of human trafficking per 100,000 population, by sex, age and form of exploitation





## Indicator 16.2.2 Trafficking in persons

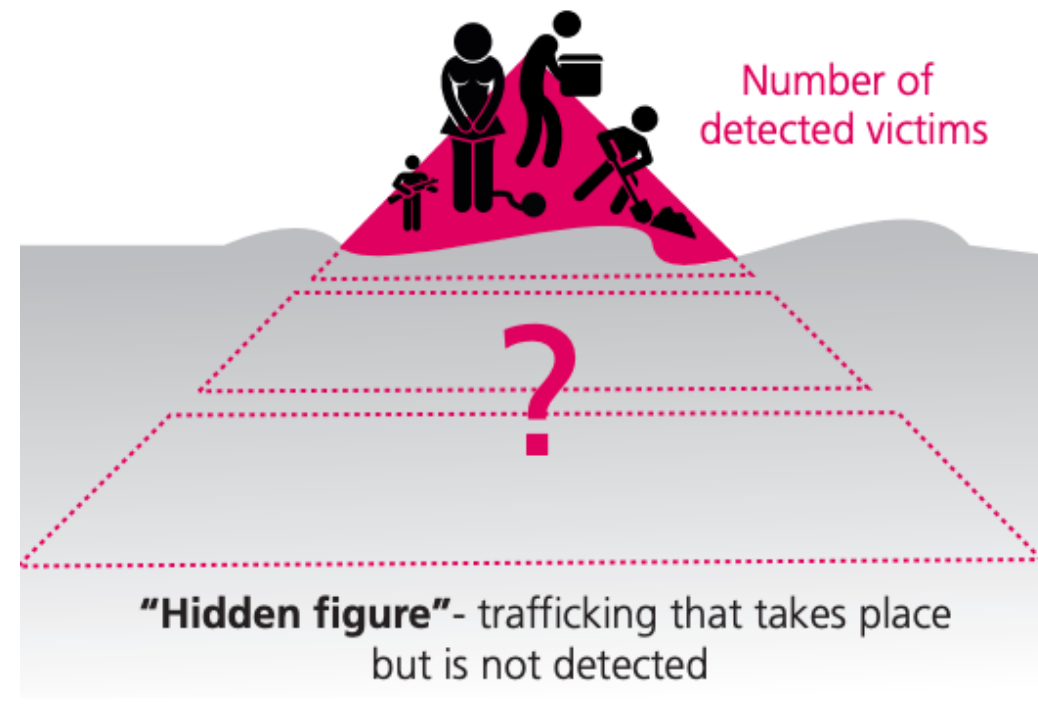
- Data on **detected victims of trafficking** are provided by national authorities competent in detecting trafficking victims
- Refer to cases of trafficking **officially recorded by national authorities**
- **350,000 victims** detected worldwide between 2003 - 2019





## Indicator 16.2.2 Trafficking in persons

- **How to interpret** if Indicator 16.2.2 goes down?
- The number of detected victims as reported by law enforcement authorities **does not monitor the level of trafficking of persons in a given country**
- Changes in detected victims of trafficking can be due to a number of factors, including:
  - changes of law enforcement practices
  - changes in legislation
  - or changes trafficking dynamics





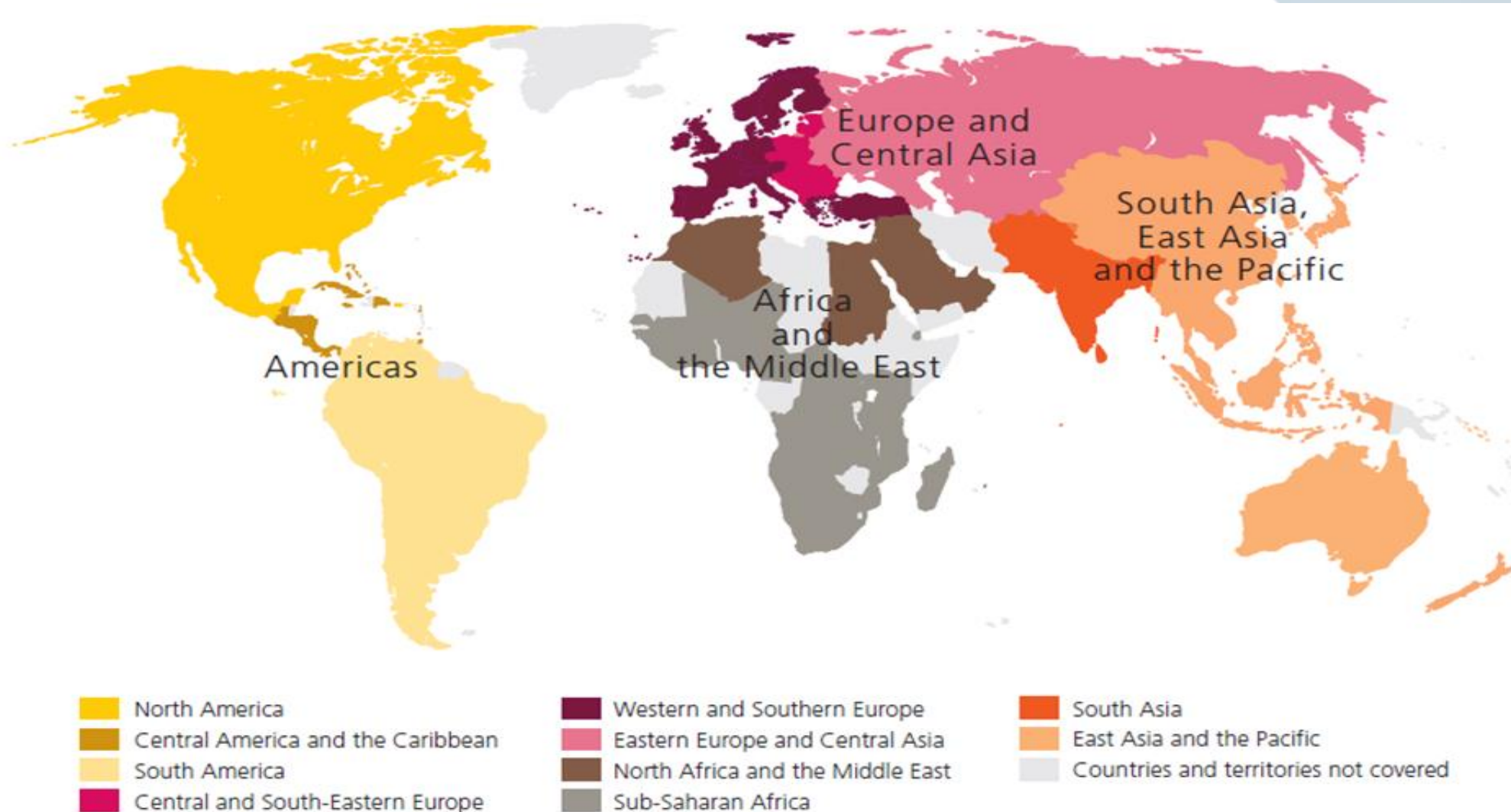
## Indicator 16.2.2 Trafficking in persons

### **Current trends and figures**

### **Way forward**



## Indicator 16.2.2 Trafficking in persons

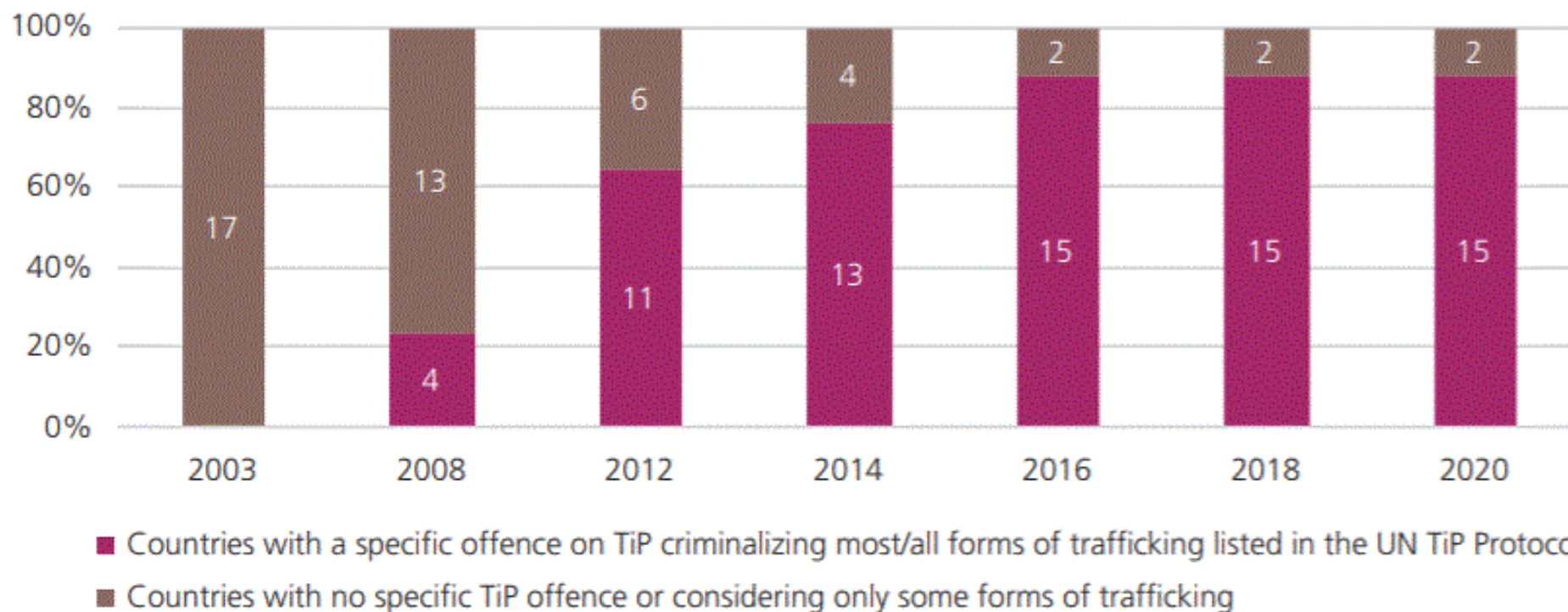


- 148 countries
- 95 per cent of the world's population



## Indicator 16.2.2 Trafficking in persons

**FIG. 190** Number of countries in North Africa and the Middle East introducing a specific offence on trafficking in persons, December 2003-August 2020



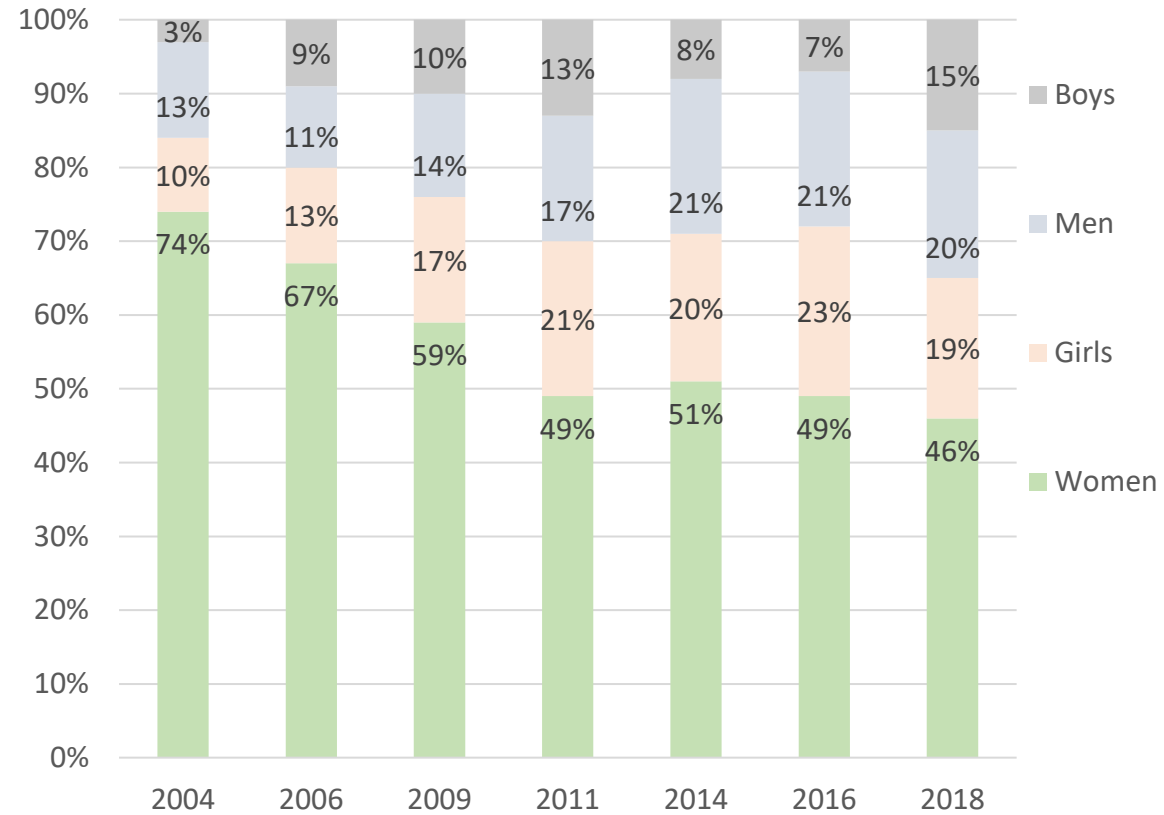
Source: UNODC elaboration of national data.





## Indicator 16.2.2 Trafficking in persons

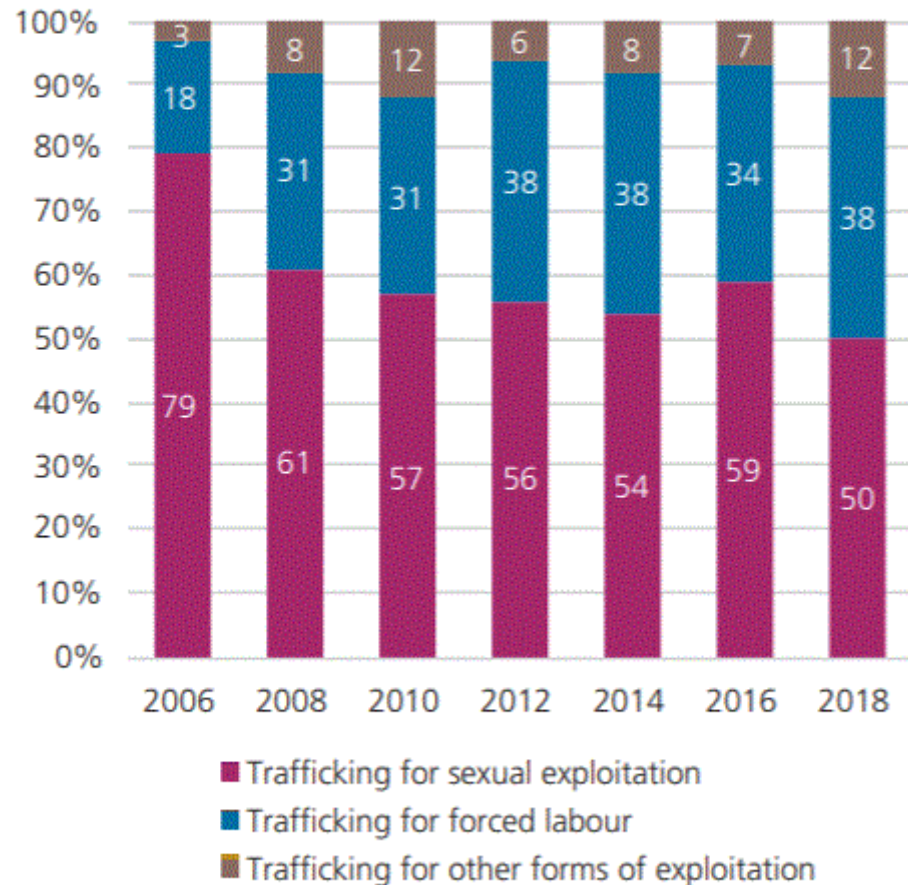
### Share of globally detected victims, by sex and age status





## Indicator 16.2.2 Trafficking in persons

**FIG. 10** Trends in the shares of forms of exploitation among detected trafficking victims, 2006–2018



Source: UNODC elaboration of national data.

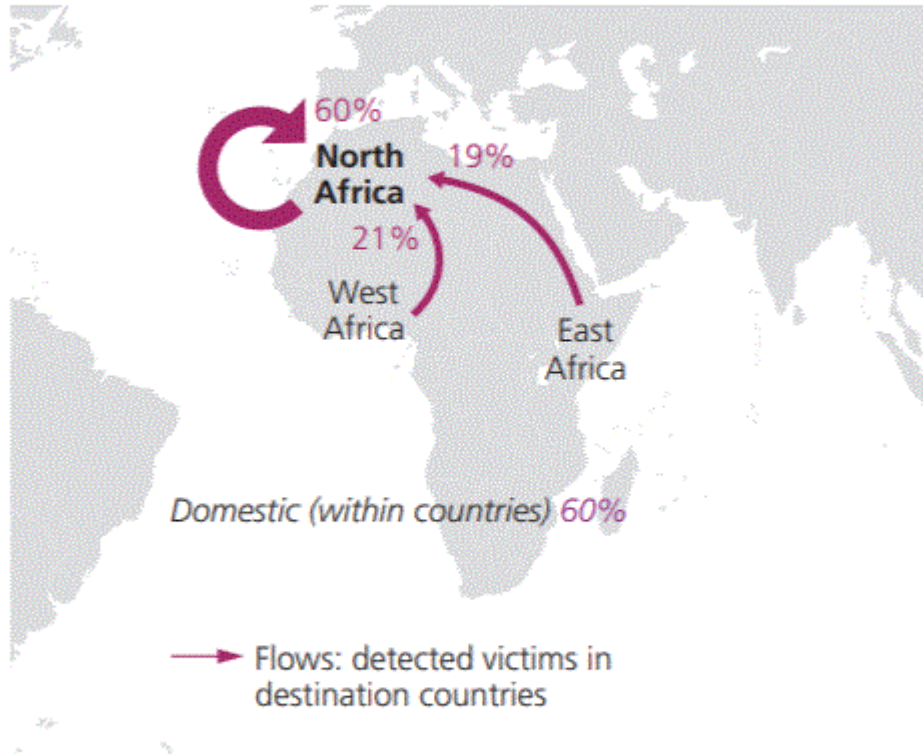
Source: UN-GLOTIP





## Indicator 16.2.2 Trafficking in persons

### MAP. 25 Origins of trafficking victims detected in North Africa, 2018 (or most recent)



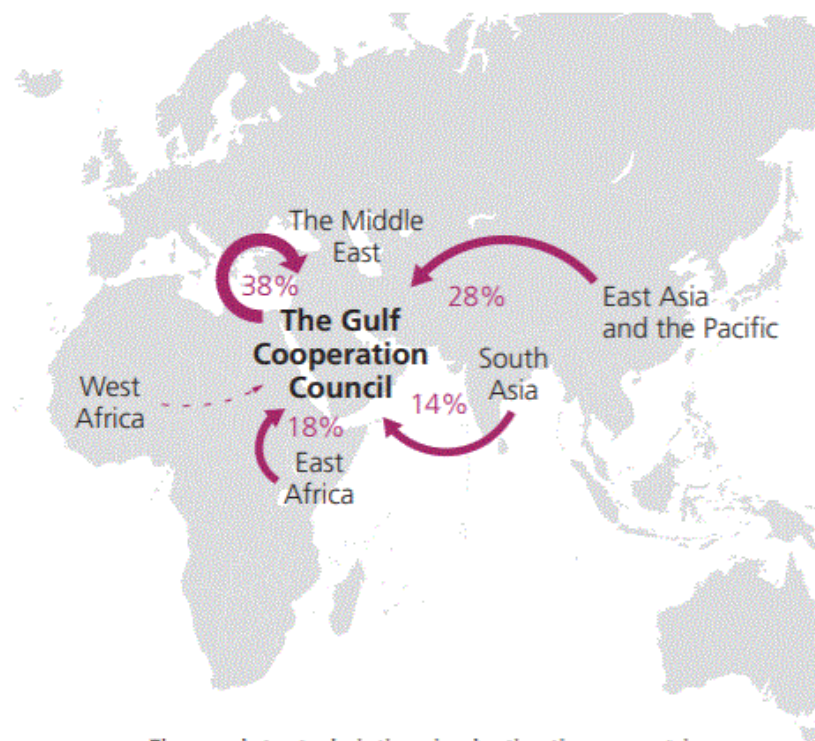
Source: UNODC elaboration of national data.

*Note: The boundaries and names shown and the designations used on this map do not imply official endorsement or acceptance by the United Nations.*

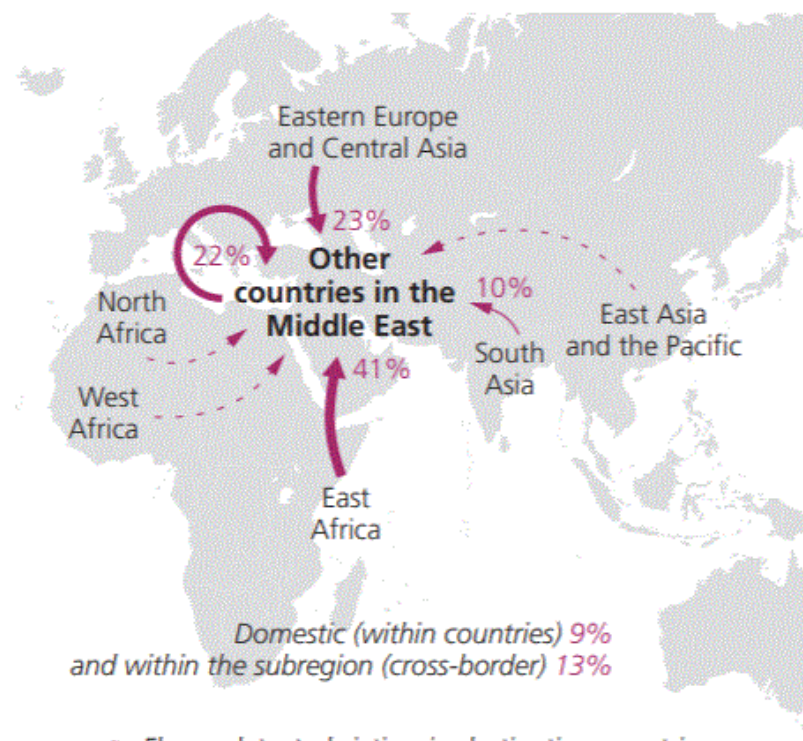


## Indicator 16.2.2 Trafficking in persons

MAP. 26 Origins of trafficking victims detected in the Middle East, 2018 (or most recent)



- > Flows: detected victims in destination countries
- -> Flows: less than 5% of detected victims in destination countries



Domestic (within countries) 9%  
and within the subregion (cross-border) 13%

- > Flows: detected victims in destination countries
- -> Flows: less than 5% of detected victims in destination countries

Source: UNODC elaboration of national data.

Note: The boundaries and names shown and the designations used on this map do not imply official endorsement or acceptance by the United Nations.



## Indicator 16.2.2 Trafficking in persons

### Current trends and figures

### **Way forward**

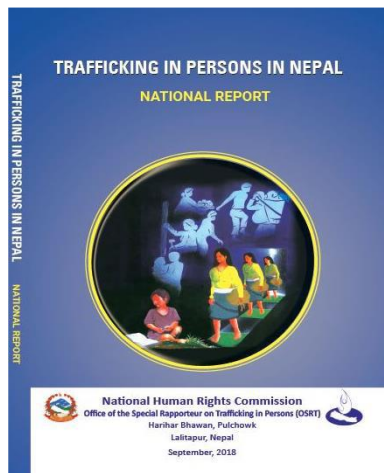


- **Participate in annual data collection: UN GLOTIP Questionnaire**
- 2021 questionnaire was sent to national focal points in May 2021. **Deadline is September 15, 2021**
- **Share existing administrative data** on trafficking in persons
- **Consider producing National Reports on Trafficking in persons**



## National Reports: requirements

- Full time trained and dedicated staff to data collection, analysis and reporting
- Establishment of a data collection system
- Adoption of data protection procedures





THANK YOU FOR YOUR ATTENTION



UNODC Data: <https://dataunodc.un.org/>

For any further questions: [unodc-ddds@un.org](mailto:unodc-ddds@un.org)