



Food and Agriculture Organization
of the United Nations



SDG Indicators 15.1.1 & 15.2.1



Webinar for the Arab region - 5 May 2021
Anssi Pekkarinen
FAO - Global Forest Resources Assessment



Contents

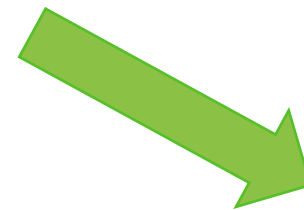
- The importance of forests
- Overview and targets of forest related SDGs indicators
- SDG indicators 15.1.1 and 15.2.1 at a glance
- The reporting process through the Global Forest Resources Assessment (FRA) Programme
- Methodology and data
- Key points



The importance of forests cannot be underestimated

Forests and trees make vital contributions to both people and the planet, bolstering livelihoods, providing clean air and water, conserving biodiversity and responding to climate change.

Sustainable forest management (SFM)



Social



Environmental

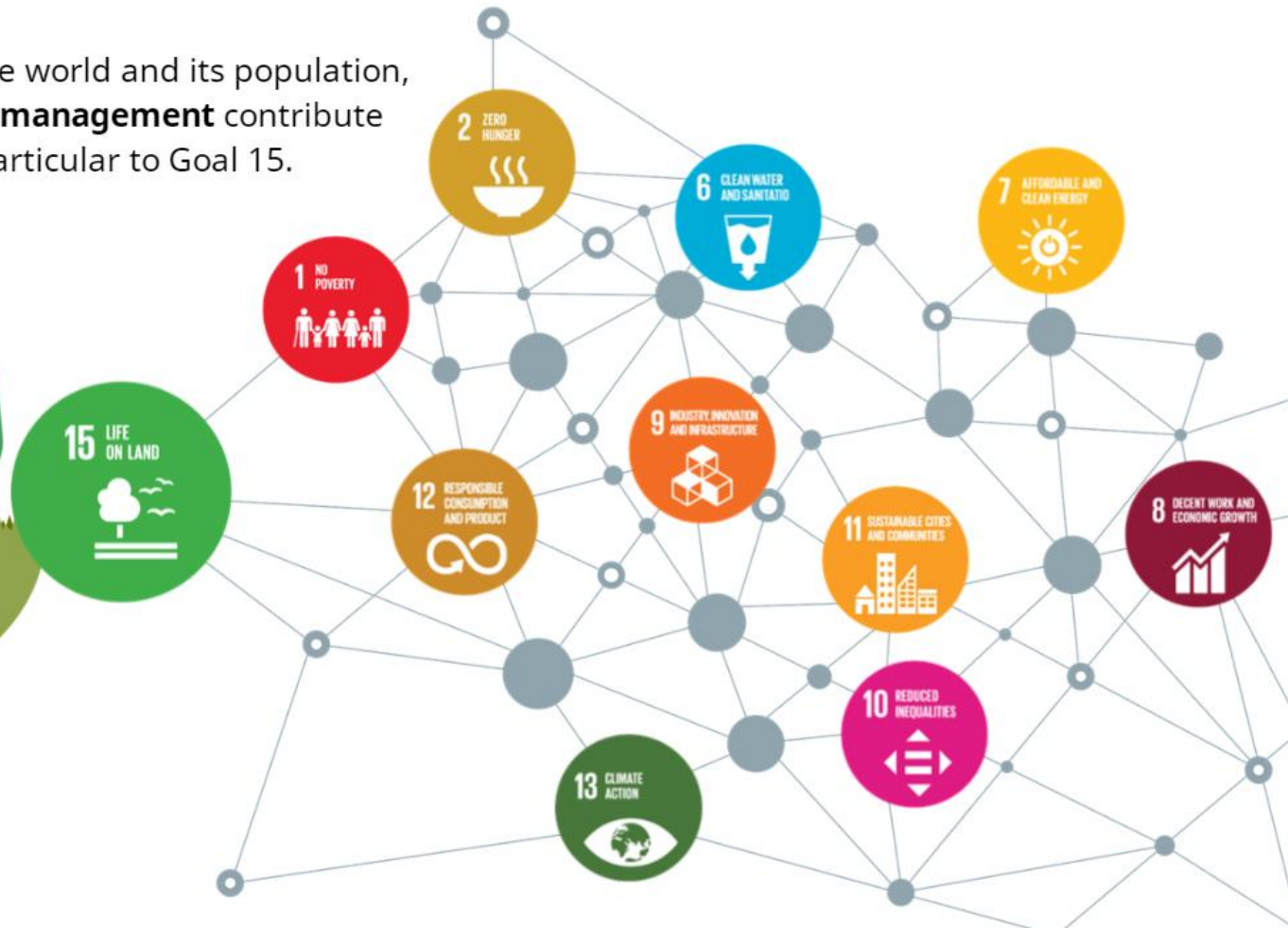


Economic



Importance of forests for the SDGs

Due to their importance for the world and its population, **forests and their sustainable management** contribute to many of the SDGs, and in particular to Goal 15.





Overview of Sustainable Development Goal 15 and forest-related indicators

“Protect, restore and promote sustainable use of terrestrial ecosystems, sustainably manage forests, combat desertification, and halt and reverse land degradation and halt biodiversity loss”





Overview of Sustainable Development Goal 15 and forest-related indicators

Target 15.1 By 2020, ensure the conservation, restoration and sustainable use of terrestrial and inland freshwater ecosystems and their services, in particular forests, wetlands, mountains and drylands, in line with obligations under international agreement

Target 15.2 By 2020, promote the implementation of sustainable management of all types of forests, halt deforestation, restore degraded forests and substantially increase afforestation and reforestation globally

Indicator 15.1.1
Forest area as a
proportion of total
land area



15.1.1

Indicator 15.2.1
Progress towards
sustainable forest
management

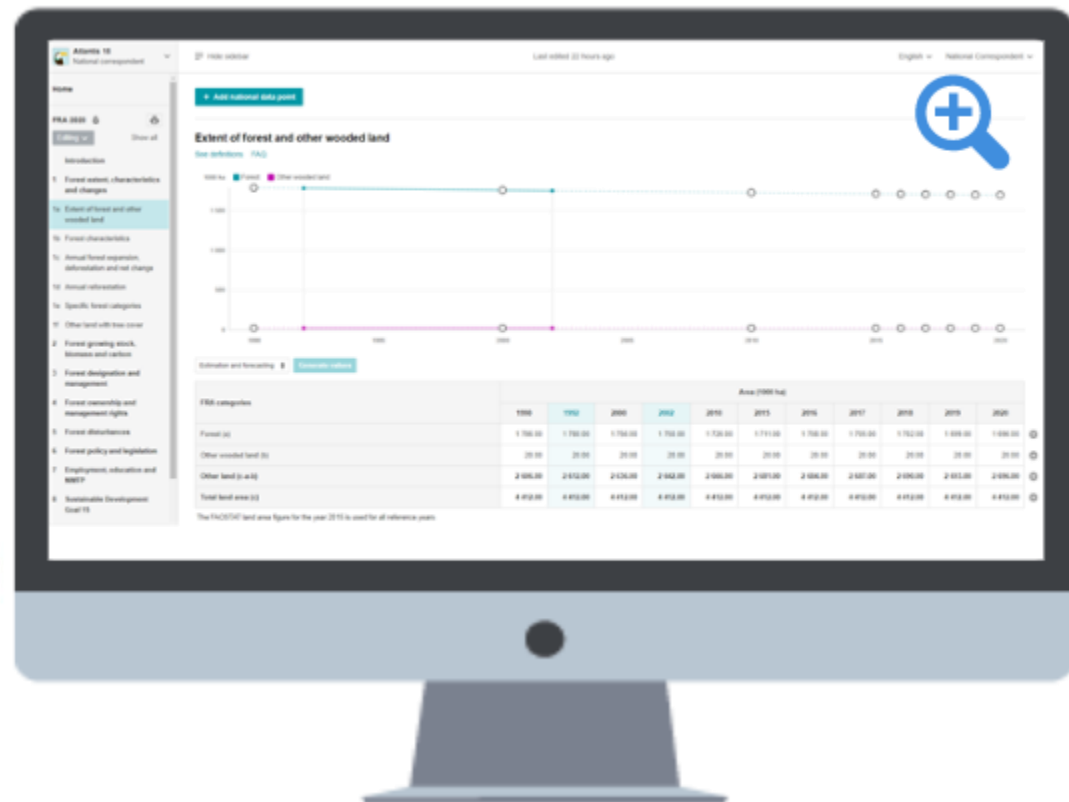


15.2.1



Reporting on Indicators 15.1.1 and 15.2.1 through the Global Forest Resources Assessment

- FAO custodian agency
- Data collection is conducted through the **Global Forest Resources Assessment (FRA)**.



Global network

The National Correspondent network covers **187 countries** and territories, which together contain **99.5 percent** of the world's forests.



Consistent reporting

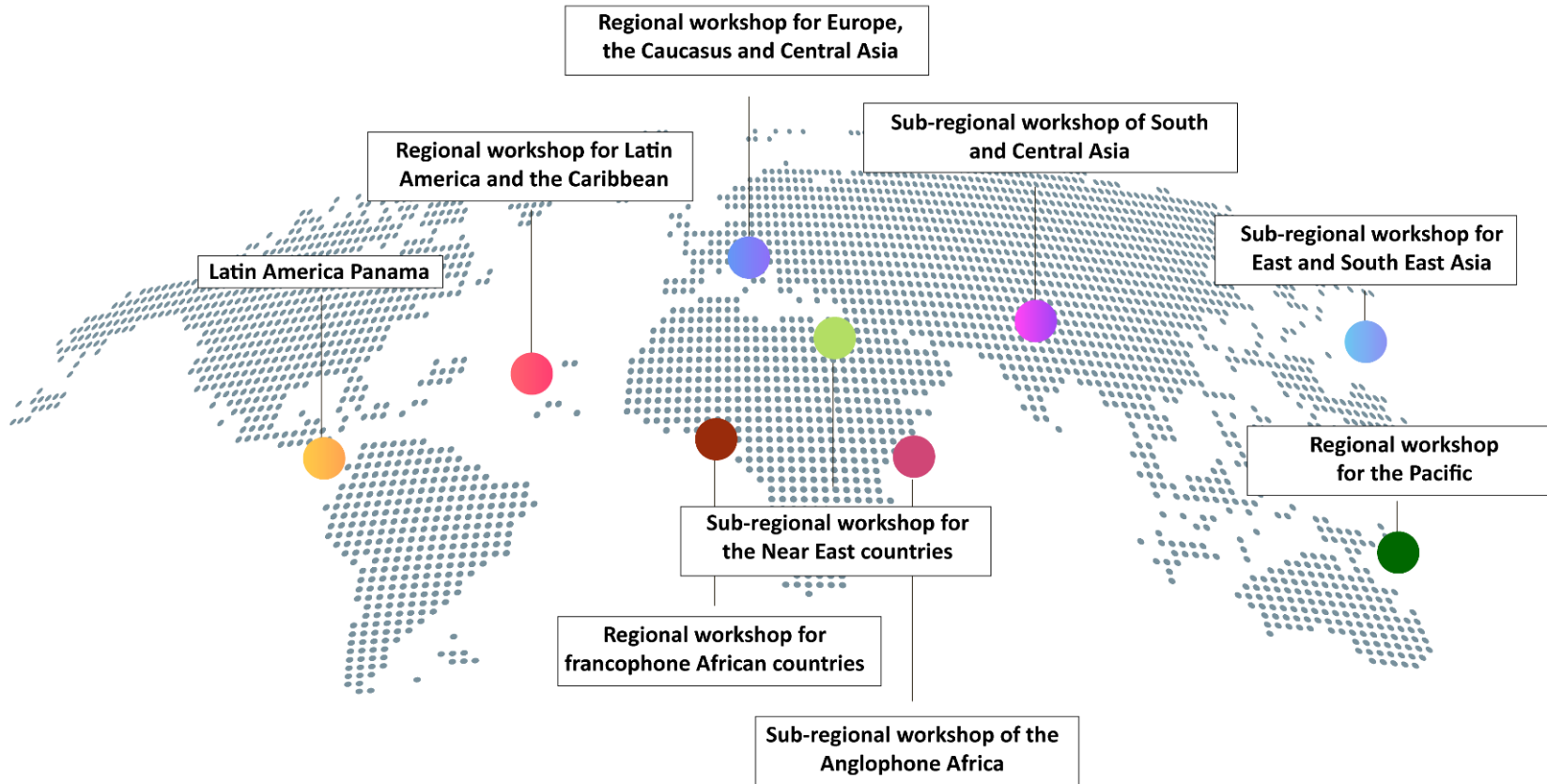
FAO trains the National Correspondents to compile country reports:

- agreed terms & definitions
- standardized reporting methodology.

This is **crucial** for consistent reporting across countries.



Capacity Development

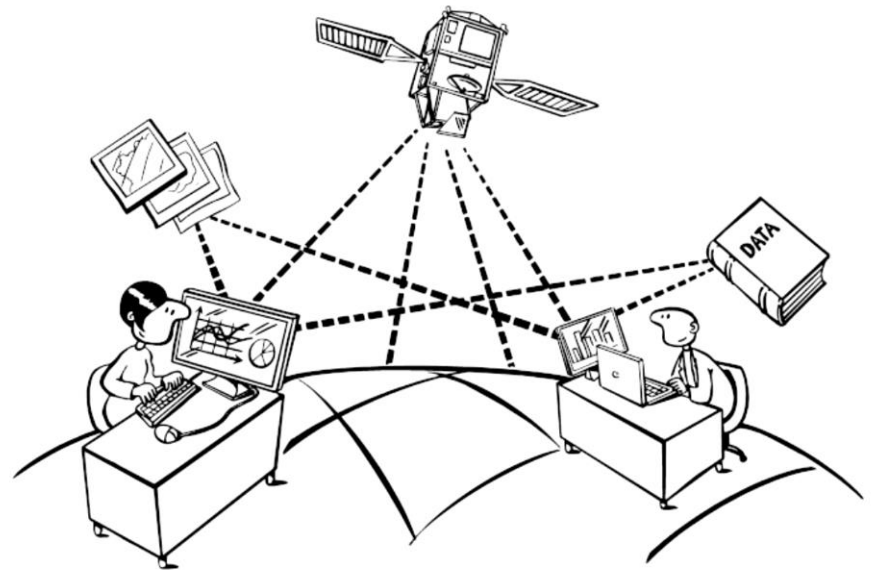


Reporting platform

Reporting is facilitated by online platform.

It also gives access to external data sources:

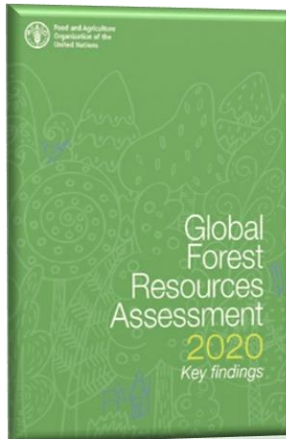
- latest satellite images
- other geospatial data.



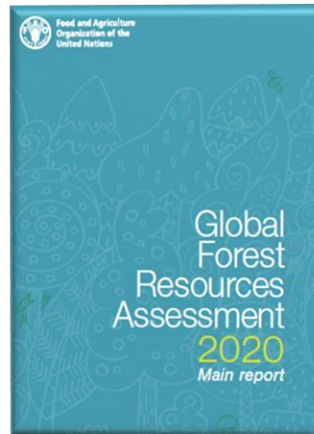
Key products of FRA 2020



Interactive digital report



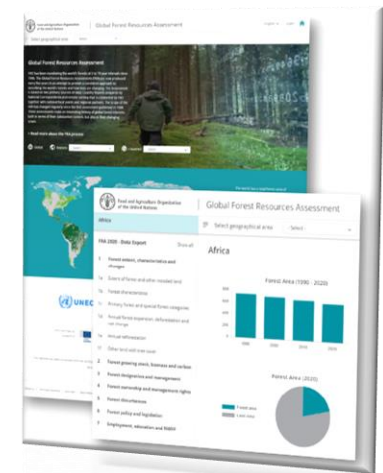
Short PDF with infographics



Detailed findings, comprising the status of and main trends in each variable



236 country and territory reports with original data and info



Interactive platform and dashboards with the complete FRA 2020 database



Who participates in the monitoring and reporting process on the indicators of **SDGs 15.1.1 and 15.2.1?**

Countries - a tool for protecting forests and implementing their sustainable management

The FRA National Correspondent - officially **nominated** by the national forest authorities - **collects and reports** to the FRA to contribute to the monitoring and reporting of the SDGs

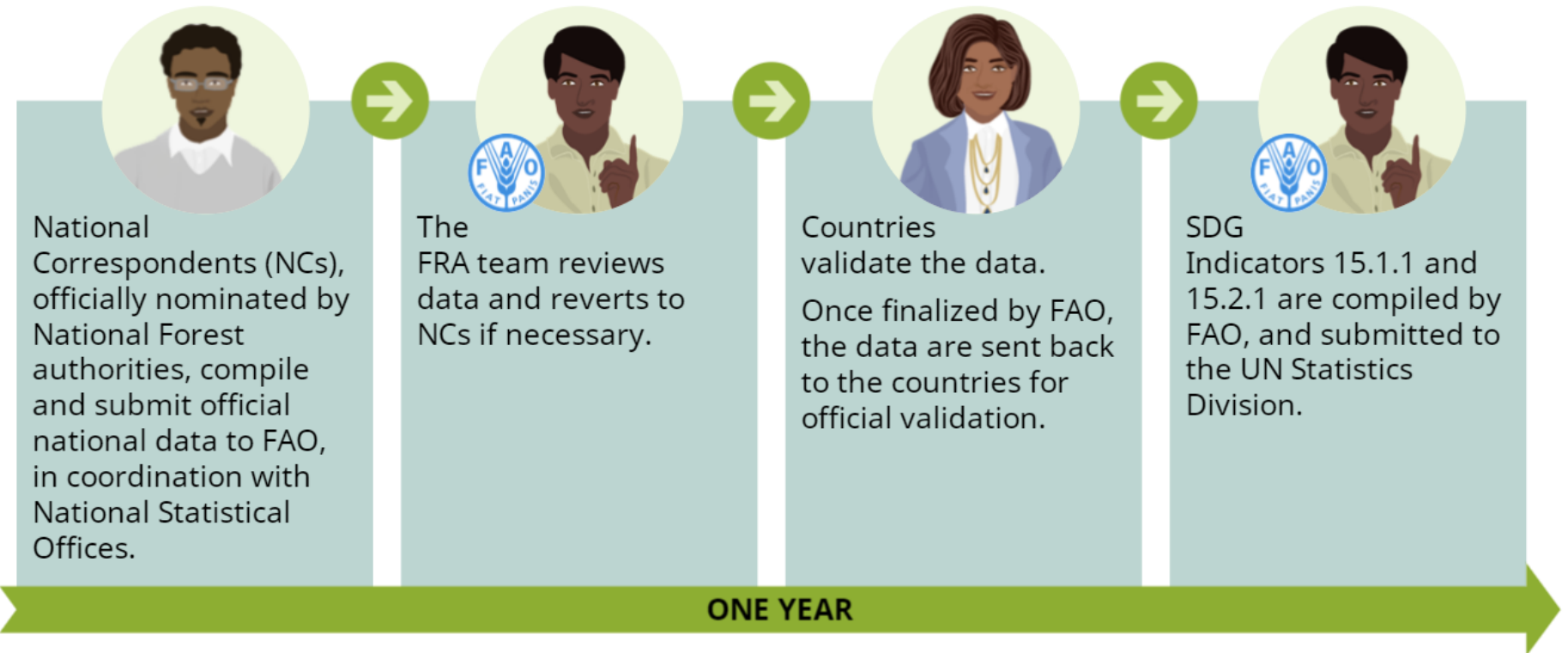
Head of the national forest authority, ministry or policy advisor- to understand the data reporting process for forest-related SDGs and how they relate to other SDGs and the policy process

National statistician - to understand the reporting process



Reporting Process

Countries are given the opportunity to report data on these indicators to FAO on an **annual basis** and **every five years** a more comprehensive reporting exercise will take place.





Why reporting through the FRA process?

Data collection and reporting through the FRA process help countries to set up a more effective monitoring and reporting system on national forest resources.

How?

- Provide data that can be compared at global level** – ensuring data harmonization
- Clarify what is behind the data** – ensuring transparency of data
- Increase coordination between data providers** – ensuring consistency of data

Methodology on SDG indicator 15.1.1

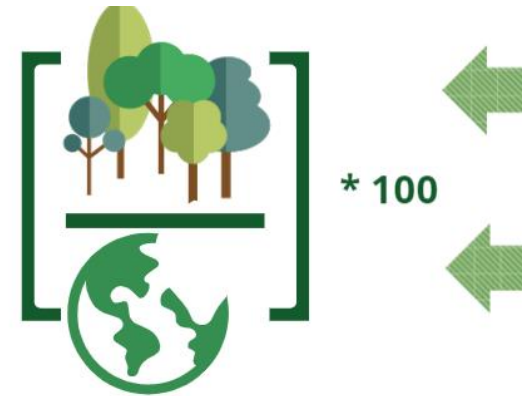
15.1

15.1.1

Indicator 15.1. measures the **proportion of land area covered by forest**



This is calculated as **the forest area in the latest reporting year** divided by **the total land area**, and expressed as a percentage





included

Areas with young trees

Abandoned shifting cultivation land

Windbreaks

Rubber-wood

FAO definition on Forest

“land spanning more than 0.5 hectares with trees higher than 5 meters and a canopy cover of more than 10 percent, or trees able to reach these thresholds in situ. It does not include land that is predominantly under agricultural or urban land use”.

excluded

Urban trees

Orchards

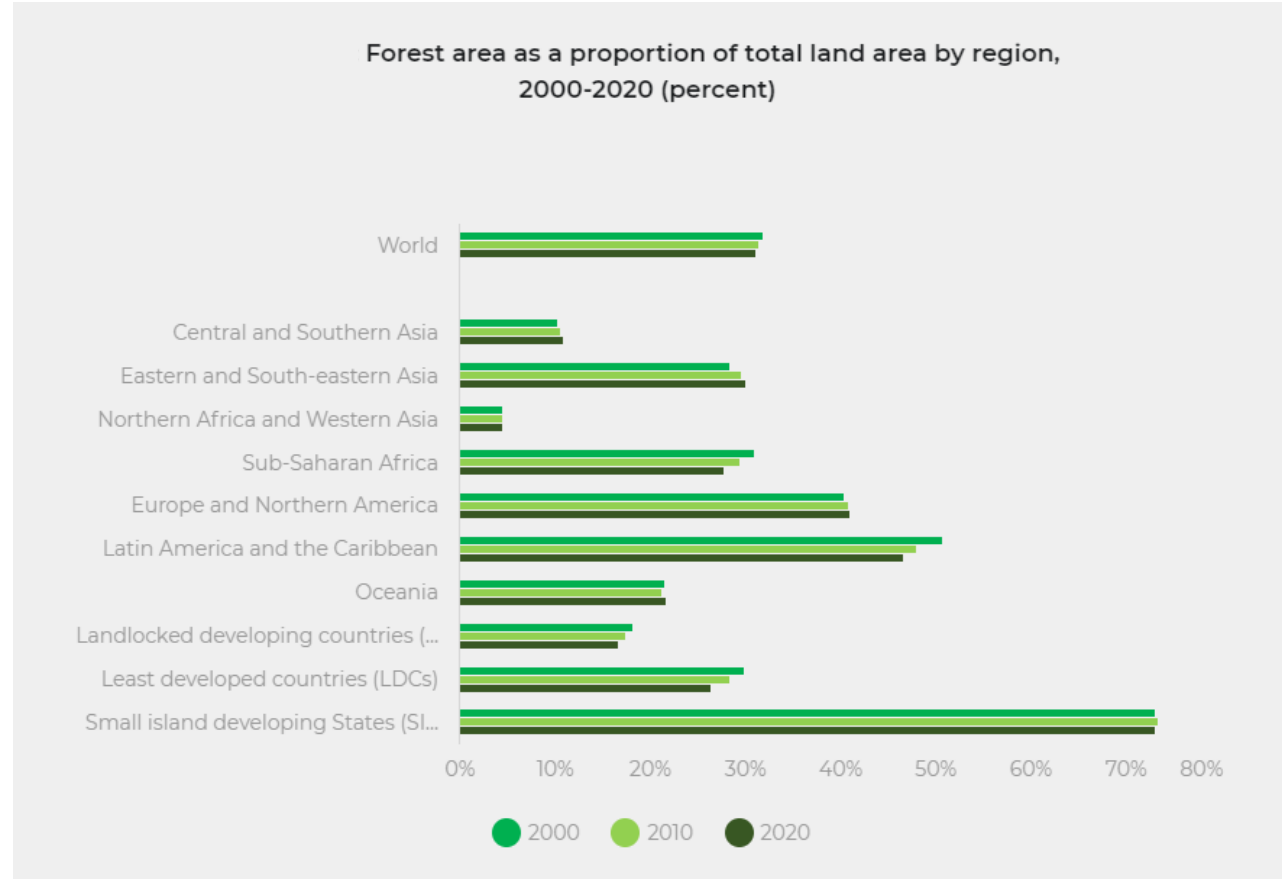
Agroforestry

Oil palm



SDG indicator 15.1.1

Time series of this indicator show whether forests are being conserved or lost or have increased.

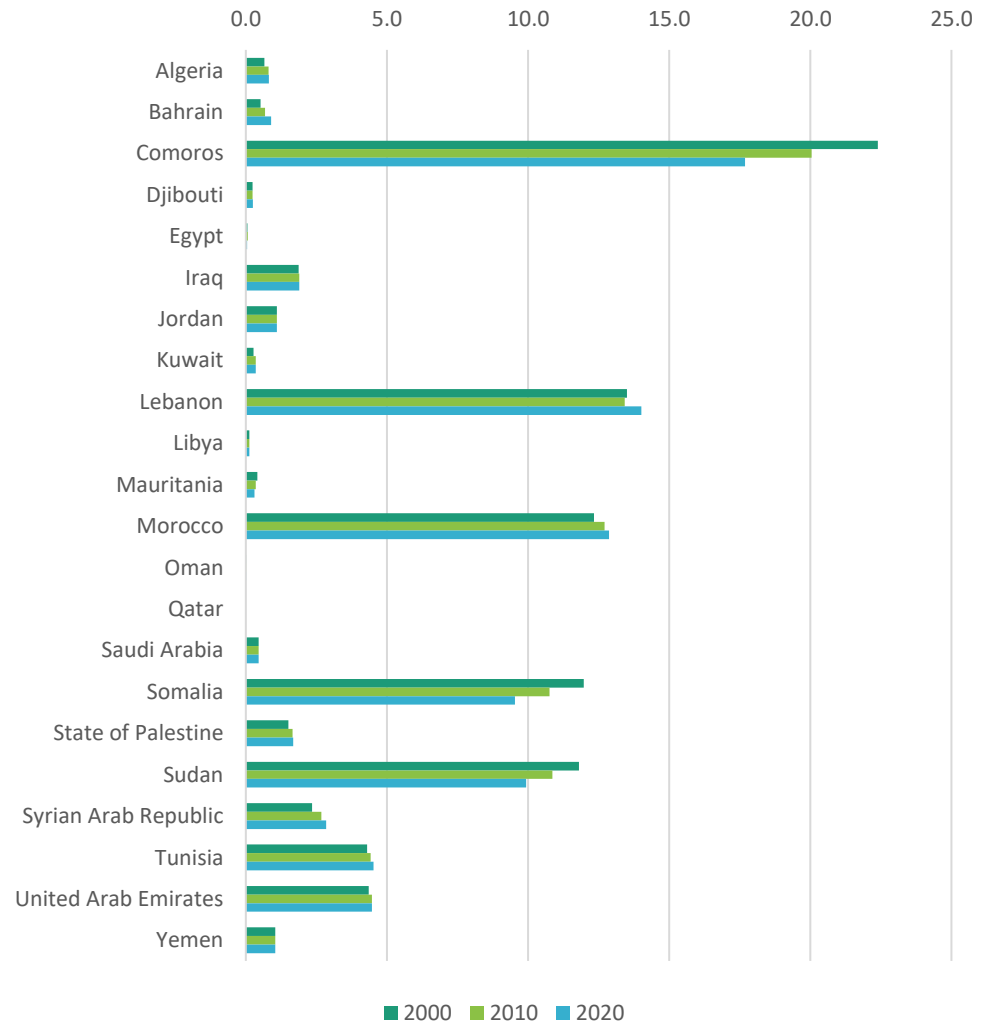
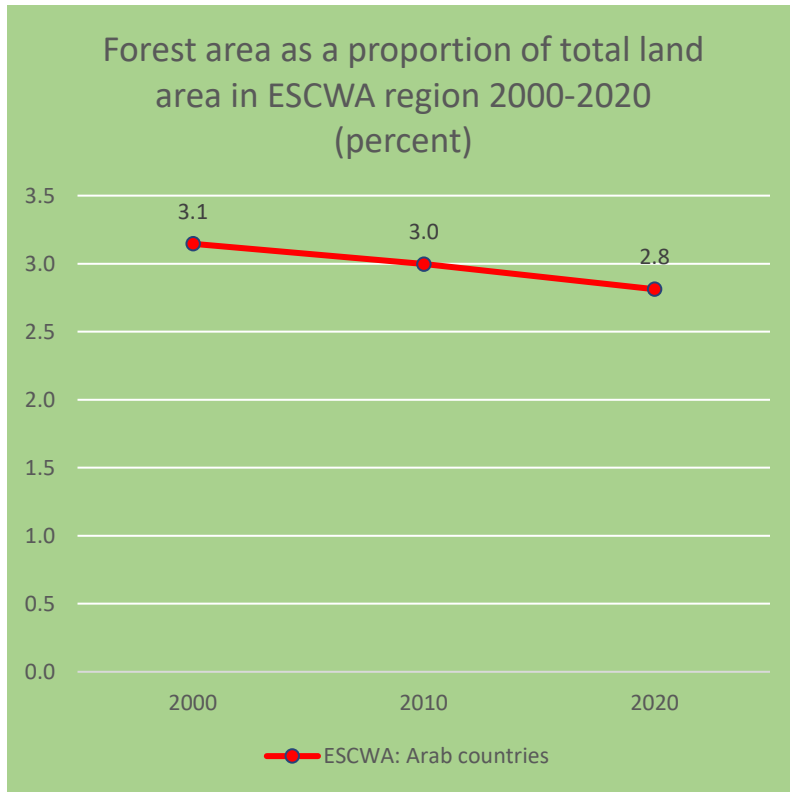


The **world's forest area** declined from 31.9 % of the global land area in 2000 to 31.2 % in 2020. Forest area losses amounted to almost 100 million hectares in the past two decades



SDG indicator 15.1.1

ESCWA region



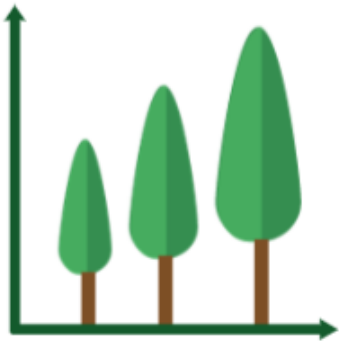


Methodology for SDG indicator 15.2.1

15.2

15.2.1

Indicator 15.2.1 measures progress towards **Sustainable Forest Management (SFM)** through five subindicators.



What is Sustainable Forest Management?

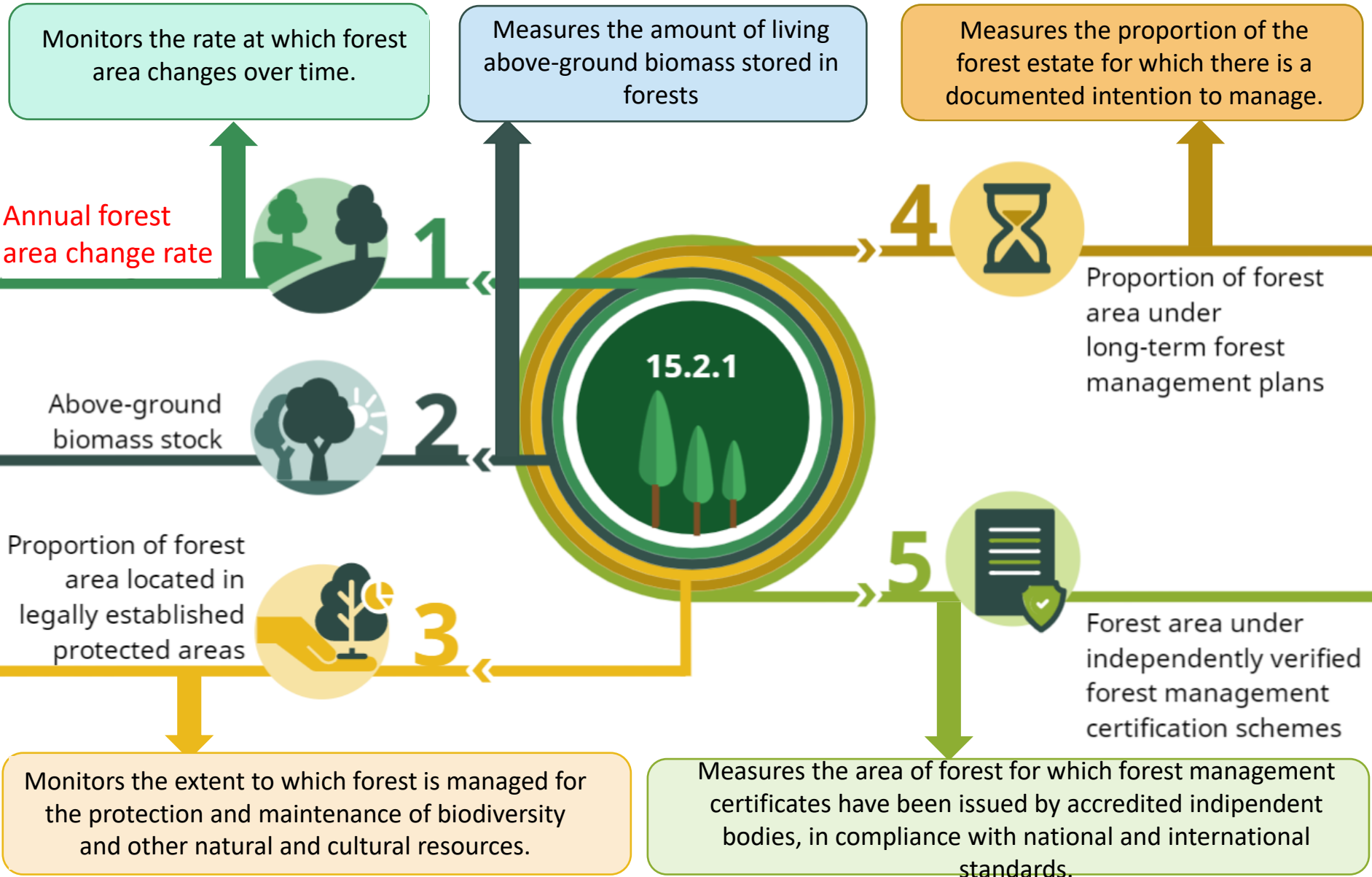
The United Nations General Assembly has defined **Sustainable Forest Management (SFM)** as...

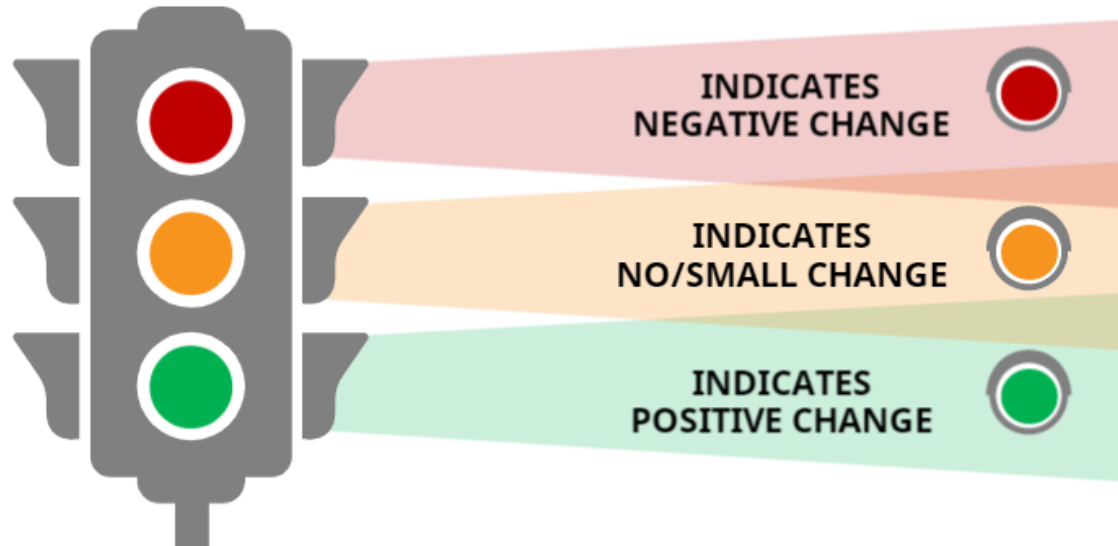


... a dynamic and evolving concept that aims to maintain and enhance the economic, social and environmental values of all types of forests, for the benefit of present and future generations.

Source: [Resolution A/RES/62/98, Non-legally binding instrument on all types of forests](#)

The five subindicators





Indicator 15.2.1 Progress towards SFM is monitored through a dashboard of traffic lights, with **green**, **yellow** and **red** selected for each of the five subindicators.

For each subindicator, the value assigned to a country in the most recent reporting year is compared with the value assigned in the previous reporting year.

Subindicator 1 – Forest area net change rate

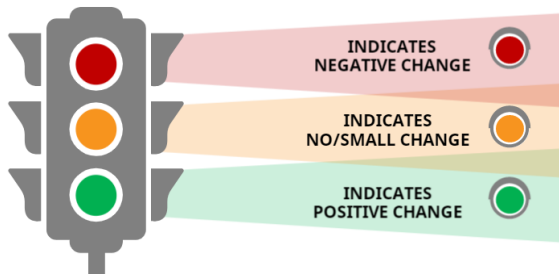
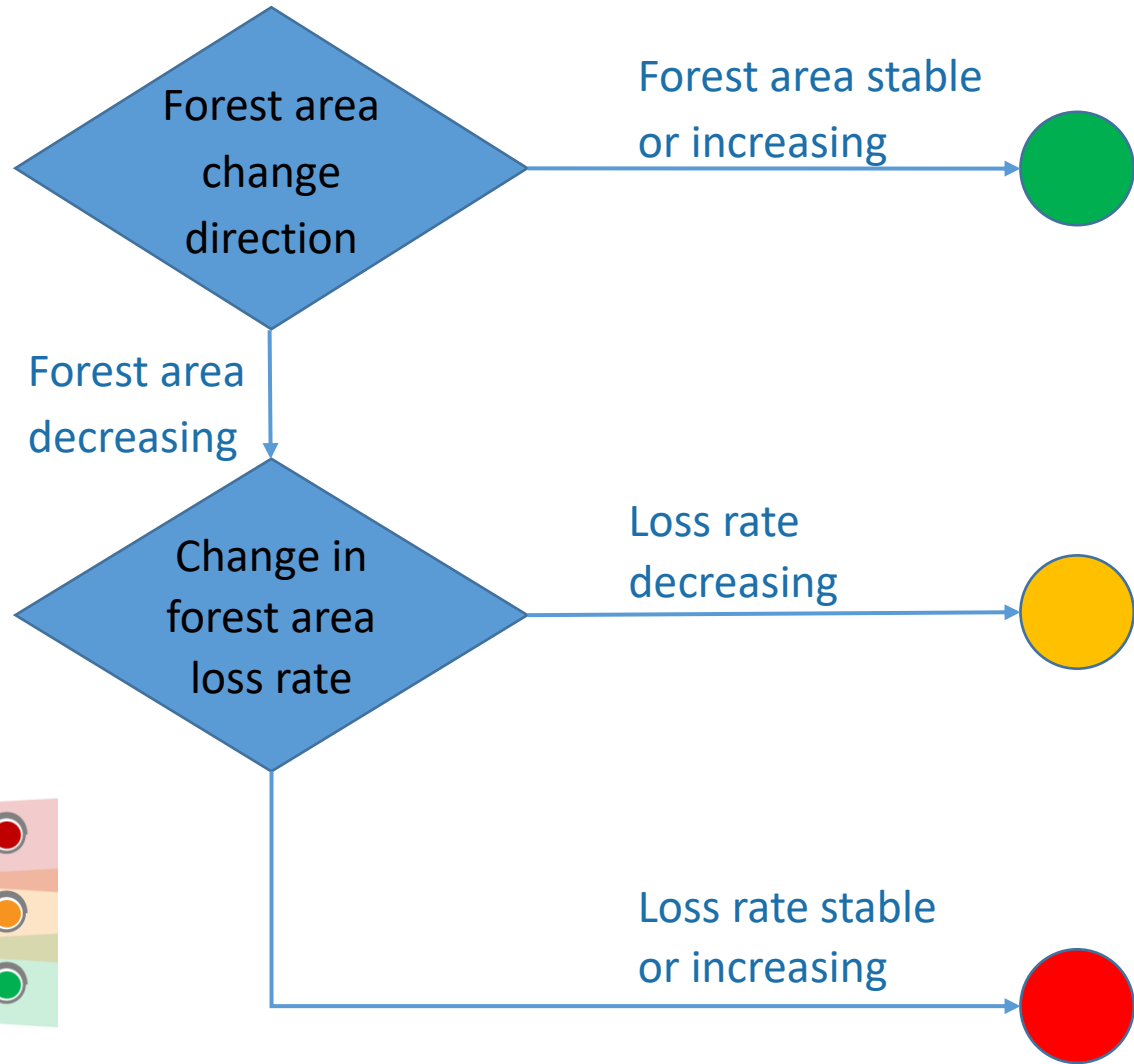
1 As a first step, the **forest area change direction** is determined by examining the value of the forest area change.





Subindicator 1 – Forest area net change rate

2 Second step, comparing forest area change from the last period to the change previous period



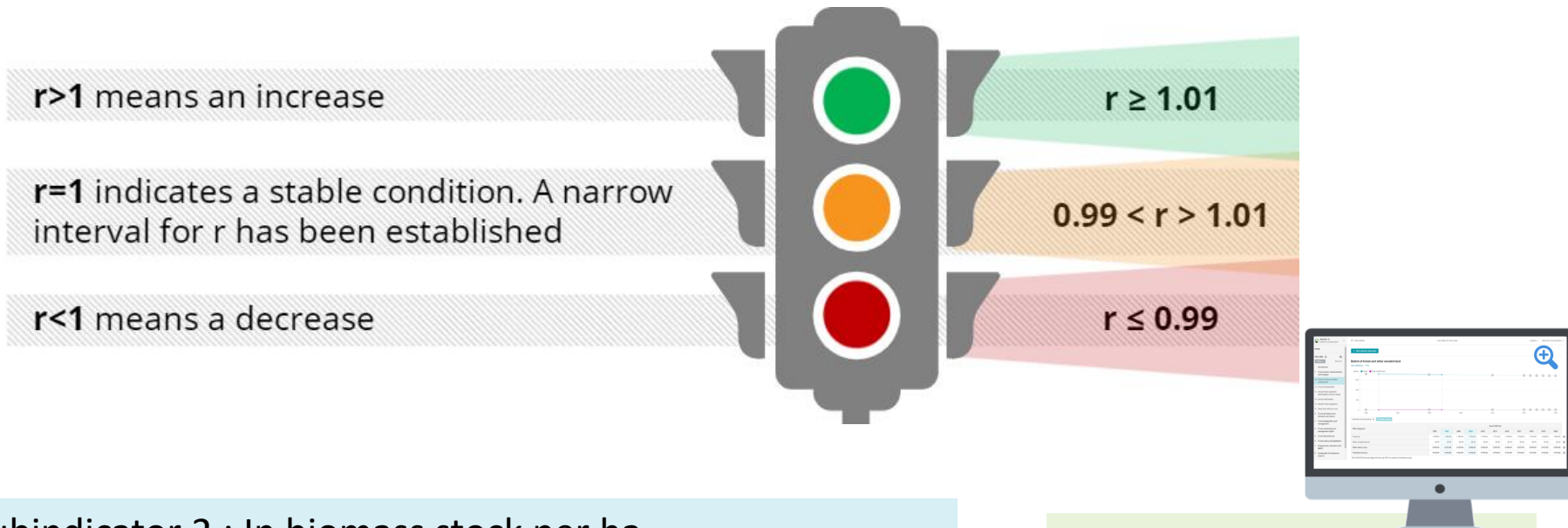


Subindicator 2 – Above-ground biomass stock in forest

Subindicator 3 – Proportion of forest area located in protected areas

Subindicator 4 – Proportion of forest area under long-term management plans

Subindicator 5 – Forest area under independently verified forest management certification schemes



Subindicator 2 : In biomass stock per ha

Subindicator 3 : % of forest area in Protected area

Subindicator 4 : % of forest area with management plans

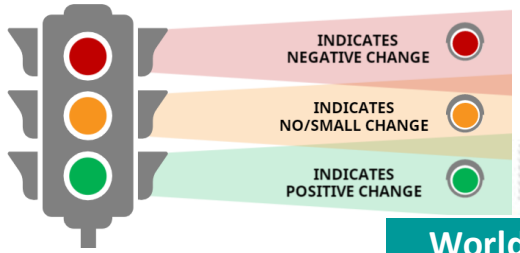
Subindicator 5: Certified forest area

From FRA through country reporting platform

Directly from certifying bodies



How to report data to the UN Statistics Division?



FAO analyses and submits this data at regional and subregional level to the UNSTAT.

2021 reporting

	1	2	3	4	5
World	●	●	●	●	●
Central and Southern Asia	●	●	●	●	●
<i>Central Asia</i>	●	●	●	●	
<i>Southern Asia</i>	●	●	●	●	●
Eastern and South-Eastern Asia	●	●	●	●	●
<i>Eastern Asia</i>	●	●	●	●	●
<i>South-Eastern Asia</i>	●	●	●	●	●
Northern Africa and Western Asia	●	●	●	●	●
<i>Northern Africa</i>	●	●	●	●	●
<i>Western Asia</i>	●	●	●	●	●
Sub-Saharan Africa	●	●	●	●	●
Europe and Northern America	●	●	●	●	●
<i>Europe</i>	●	●	●	●	●
<i>Northern America</i>	●	●	●	●	●
Latin America and the Caribbean	●	●	●	●	●
Oceania	●	●	●	●	●
<i>Oceania (exc. Australia and New Zealand)</i>	●	●	●	●	●
<i>Australia and New Zealand</i>	●	●	●	●	●
Landlocked developing countries (LLDCs)	●	●	●	●	●
Least Developed Countries (LDCs)	●	●	●	●	●
Small island developing States (SIDS)	●	●	●	●	●

The way forward

- **FRA report every five years**
- **Voluntary updates of key indicators**
- **Guidance and tools for more consistent reporting e.g. on primary forests**
- **Support using remote sensing, based on country capacity and capability**



Key points



Forests provide critical goods and services to humankind. It is crucial to have a clear understanding of the situation of the world's forests and ongoing trends, in order to protect and manage forests wisely.



SDG 15 and Targets 15.1 and 15.2 are intended to stimulate action on forest conservation and sustainable forest management. Both are critically important and are included within the ambitious framework of the 2030 Agenda plan of action for people, planet and prosperity.



Indicators 15.1.1 and 15.2.1 have been developed to report progress on Targets 15.1 and 15.2 at global level.



Reporting on these SDG indicators is carried out through the FRA process. Data reported by the countries, analysed by FAO and reported to the UNSD for inclusion in the SDG progress report.

Useful Links

- **Global Forest Resources Assessment**
<http://www.fao.org/forest-resources-assessment/en/>
- **Global Forest Resources Assessment process**
https://www.youtube.com/watch?v=SmMyfNIZ-jQ&feature=emb_logo
- **FAO SDG website**
<http://www.fao.org/sustainable-development-goals/en/>
- **2019 Progress report on SGD 15.1.1 / 15.2.1 / 15.4.2 / 15.6.1**
<http://www.fao.org/sdg-progress-report/en/#sdg-15>
- **E-learning on indicators 15.1.1 and 15.12.1**
(<https://elearning.fao.org/course/view.php?id=446>)
- **The FRA Platform**
(<https://fra-data.fao.org/>)

Thank you!

www.fao.org/forest-resources-assessment

