

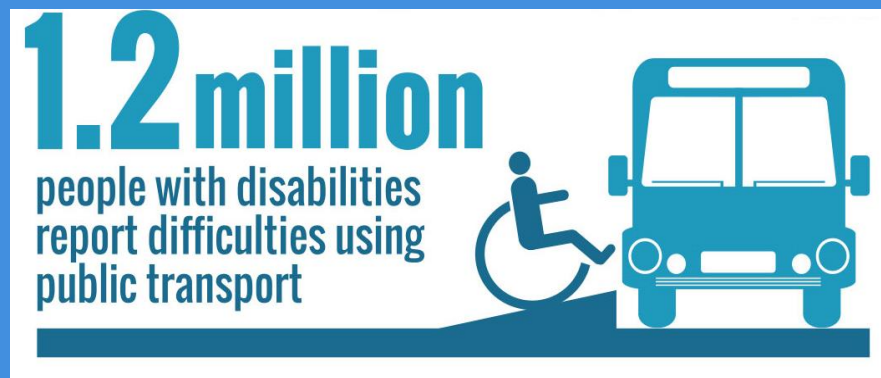
# STATISTICS FOR EVIDENCE POLICY-MAKING



UNITED NATIONS

الاسكوا

ESCWA



# Purpose of Measuring

- (a) To provide services, including the development of specific programs and policies for service provision and the evaluation of these programs and services.
- (b) To monitor the level of functioning in the population. indicator, which characterizes the status of the population in a society;
- (c) To assess equalization of opportunities.

The common goal is to promote the participation of persons with disabilities in all aspects of life by preventing the onset and consequences of impairments, promoting optimal levels of functioning and equalizing opportunities for participation.

## How many people with disabilities are there in the population?

Before this question can be answered, decisions must be made about how disability will be

- Defined
- Measured
- What methods used

How many people with disabilities are there in the population?

What kinds of disability do people in the population have, and how frequent is each kind?

How does the frequency or prevalence of disability vary by age group, gender and geographical area?

How many people with disabilities are without access to the special appliances or aids that they need?

What percentage of school-age children with disabilities are in school?

What percentage of adults with disabilities are economically active, and how does this compare with the percentage for other adults?

How many people with disabilities receiving social services require full-time care from a family member or other person?

Can people with disabilities use public transport available to others? If not, what are the reasons that they cannot use it?

# Indicators



UNITED NATIONS

الاسكوا

ESCWA

Demography

Education and literacy

Employment

Industry

occupation

# Demography

Proportion of people by disability status, sex, geographical (P8.1-R Population with and without disabilities by age and sex\*)

Prevalence (weighted %) by each domain and degree of difficulty at the three levels of difficulty; unable at all, with a lot of difficulty, and some difficulty.

Age distribution of people with disabilities by sex and geographical area (prevalence of people with disabilities over age groups by geographical areas)

Proportion of people by disability status, marital status and age group and geographical area

Proportion of population 15 years of age and over, by disability status, by each type of marital status, and age group and geographical area (P8.3-A Total population 15 of age years and over, by disability status, marital status, age and sex)



Proportion of people by each type of difficulty (walking, seeing, hearing, cognition, self-care and communication) by sex and geographical area

Proportion of people with disability living in household and in institution (P8.1-A Total population by disability status, whether living in household or institution, age and sex)

Proportion households with one or more persons with disabilities, by type and size of household (all sizes) (P8.2-A Households with one or more persons with disabilities, by type and size of household and sex)

Proportion of people living with disability by cause (congenital, birth related, illness, Physical and psychological abuse, car accident, work accident, War/Terrorism, aging)

# Education and literacy

Proportion of Population 5 years of age and over, by disability status and educational attainment, sex and geographical area (P 8.2-R Population 5 years of age and over, by disability status, educational attainment, age and sex)

Proportion of Population 5 years of age and over, by disability status, school attendance, and age group, , sex and geographical area (P8.4-A Population 5 to 29 years of age, by disability status, school attendance, age)

indices (female/male, rural/urban, bottom/top wealth quintile and others such as disability status, indigenous people and conflict-affected as data become available) for all indicators on this list that can be disaggregated (SDG 4.5.1)

Population 10 years of age (age groups) and over by disability status and literacy, by sex and geographical area

# Employment

Prevalence of disability by employment for each disability status

Employment rate by disability status , sex , age group, and geographical area

Unemployment rate, by sex, age group and persons with disabilities (SDG 8.5.2) and geographical area

Not economically active population by sex, age group, and geographical area

# Industry/Occupation

Proportion of population by occupation and disability status, and geographical area

Proportion of Population by disability status and type of industry, sex and geographical area

Average hourly earnings of female and male employees, by occupation, age group and persons with disabilities (SDG 8.5.1)

# Poverty

Proportion of people living below 50 per cent of median income, disaggregated by age group, sex and persons with disabilities (SDG 10.2.1) and geographical area

# Access

Proportion of individuals who own a mobile telephone, by sex (SDG 5.b.1)

Proportion of individuals using the Internet (SDG 17.8.1)

Percentage of population using safely managed drinking water services (SDG 6.1.1)

Percentage of population using safely managed sanitation services, including a hand-washing facility with soap and water (SDG 6.2.1)

Proportion of the population that has convenient access to public transport, disaggregated by age group, sex and persons with disabilities (SDG 11.2.1)

Percentage of women of reproductive age (aged 15-49) who have their need for family planning satisfied with modern methods (SDG 3.7.1)

# Recommendations

Concerted and coordinated action is urgently needed at all levels to harmonize concepts, definitions and methodologies in line with international standards and guidelines.

Generate disaggregated and cross classified data to provide detailed information to policy makers

Support the NSOs, at all stages of data production; data collection and data communication.