



Moroccan Household Satellite Account: Methodology And Results

Tunis 10-12 October 2023

Yattou AIT KHELLOU

*Head of the Methodology and Studies Division
National Accounts directorate, HCP, Morocco*



Outline:

- ✓ Why a household satellite account?
- ✓ Internationale references
- ✓ SNA production boundary
- ✓ Methodology
- ✓ Household satellite account : Results



Why a household satellite account?

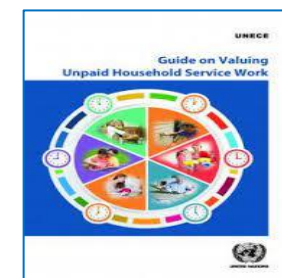
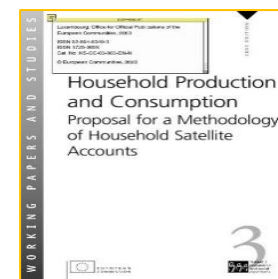
HHSA is based on expanding the SNA production boundary to include non-market household service production in order to

- Quantify the value of domestic work;
- Highlight household domestic production;
- Analyze the productive role of households;
- Assess the contribution of households to the national economy;
- Present an extended measure of living standards.



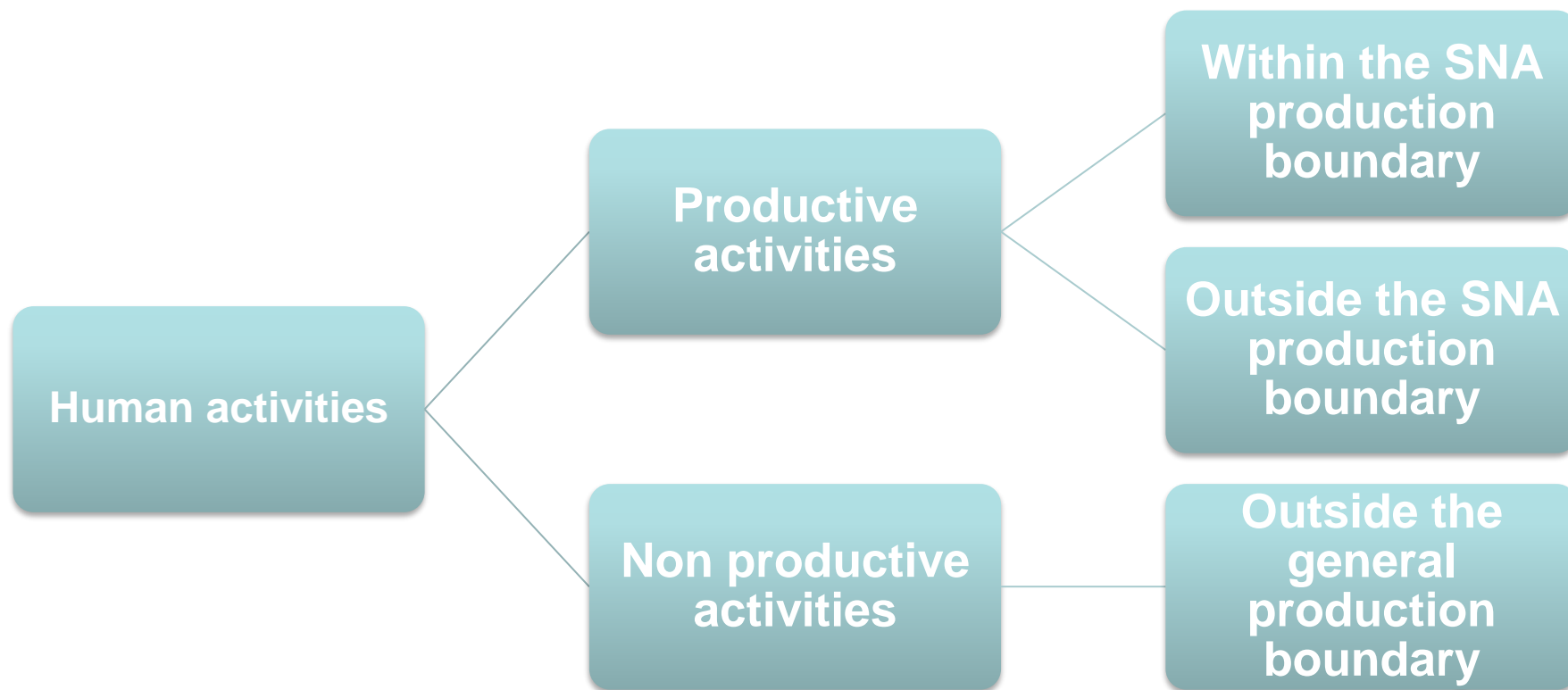
Internationale references

- System of National Accounts SNA 2008;
 - "Household Production and consumption, Proposal for a methodology of Household Satellite Accounts", Eurostat 2003;
- UNECE Guide on Valuing Unpaid Household Service Work, 2017;
- Guidance Note on Unpaid Household Activities, ISWGNA, on Well-being and Sustainability





SNA production boundary





Methodology

Activities considered in HHSA:

- Productive activities: if they can be delegated to someone else (third party criteria) ;
- Production of services;
- Unpaid activities.

➤ A special question to distinguish activities to take into account

Did you do this work for	taken into account in the satellite account
1 salary	No
2 profit	No
3 yourself	yes
4 Household	yes
5 family	yes
6 Neighbors and friends	yes
7 Organization Non Governmental	yes
8 other	yes

Methodology

Activities considered:



Food preparation



House
cleaning and
maintenance



Laundry and
footwear care



Shopping



Transport



childcare
and adult
care



volunteer
work



Methodology

Valuing production

(quantity of
services
produced)
x
(market price)

Output
approach



sum of costs
involved in the
production of
domestic
services

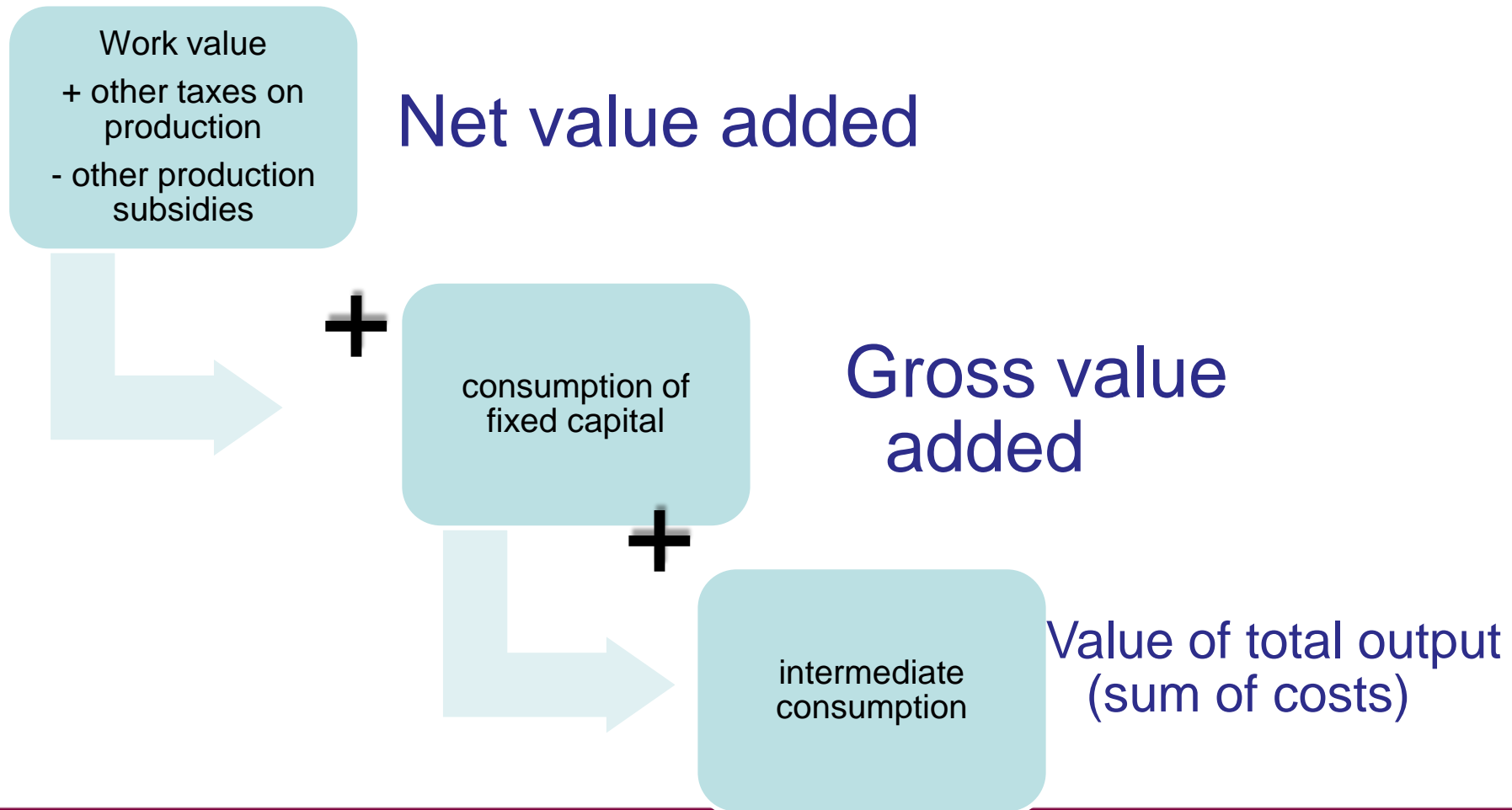
Input
approach





Methodology

Input approach





Methodology

Valuing Value added

■ Value of work:

- Volume of hours worked by activity (TUS)
- Which wage / whose wage?
 - ❖ opportunity cost method: the assumption that the time spent on unpaid work reduces the time spent on paid work;
 - ❖ market replacement cost method: the assumption that households save money by doing housework themselves instead of buying market services or hiring someone else to perform the required tasks.



Methodology

Valuing Value added

■ Value of work:

market replacement method provides three options to use:

- wages of specialised workers in market enterprises
- wages of specialised workers at home;
- wages of generalist or polyvalent workers.



Methodology

● Value of work (Moroccan practice):

- Valuation (net salary)
- Average hourly wage of employees in the informal sector with professions equivalent to household activities:
 - The working conditions are similar to those of household work
 - The qualities of capital goods are similar
 - Productivity is similar to that of housework in general

[..\Desktop\activities and hourly wages in moroccan household satellite account.xlsx](#)



Methodology

Intermediate consumption

- consumer goods acquired by households are examined in detail (classified according to COICOP)
 - Products used as an input for domestic production are considered as intermediate consumption and are affected to the users activities
 - Products consumed by households without any transformation are considered as final consumption
 - Household's durables are considered as assets.
- [..\Desktop\bien et services-ci, cf, fbcf Tunis.xlsx](#)



Methodology

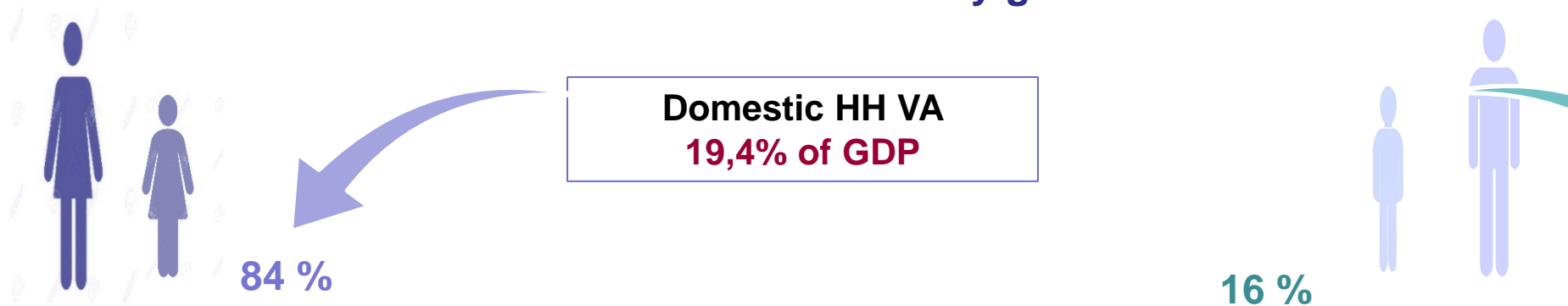
○ Consumption of fixed capital:

- Household's durable goods are treated as capital acquisitions;
- Series of households expenditures on durable goods;
- Lifetime of each product;
- Allocation by activity.
- [CCF et impôts.xlsx](#)



Household satellite account : Results

Contribution to domestic VA by gender



- 98% of food preparation's VA
- 82% of ' caregiving's VA

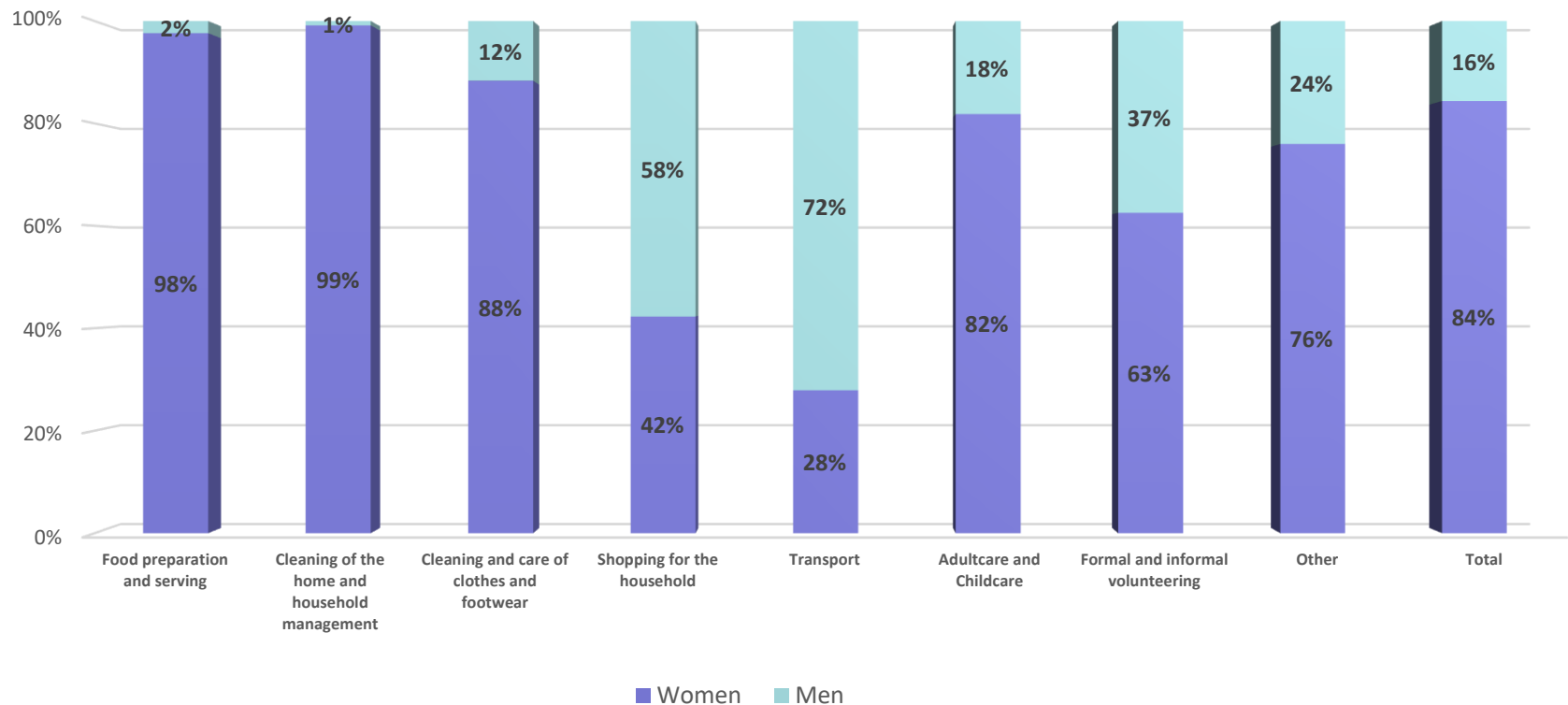
- 72% of transport services's VA
- 58% of shopping's VA





Household satellite account : Results

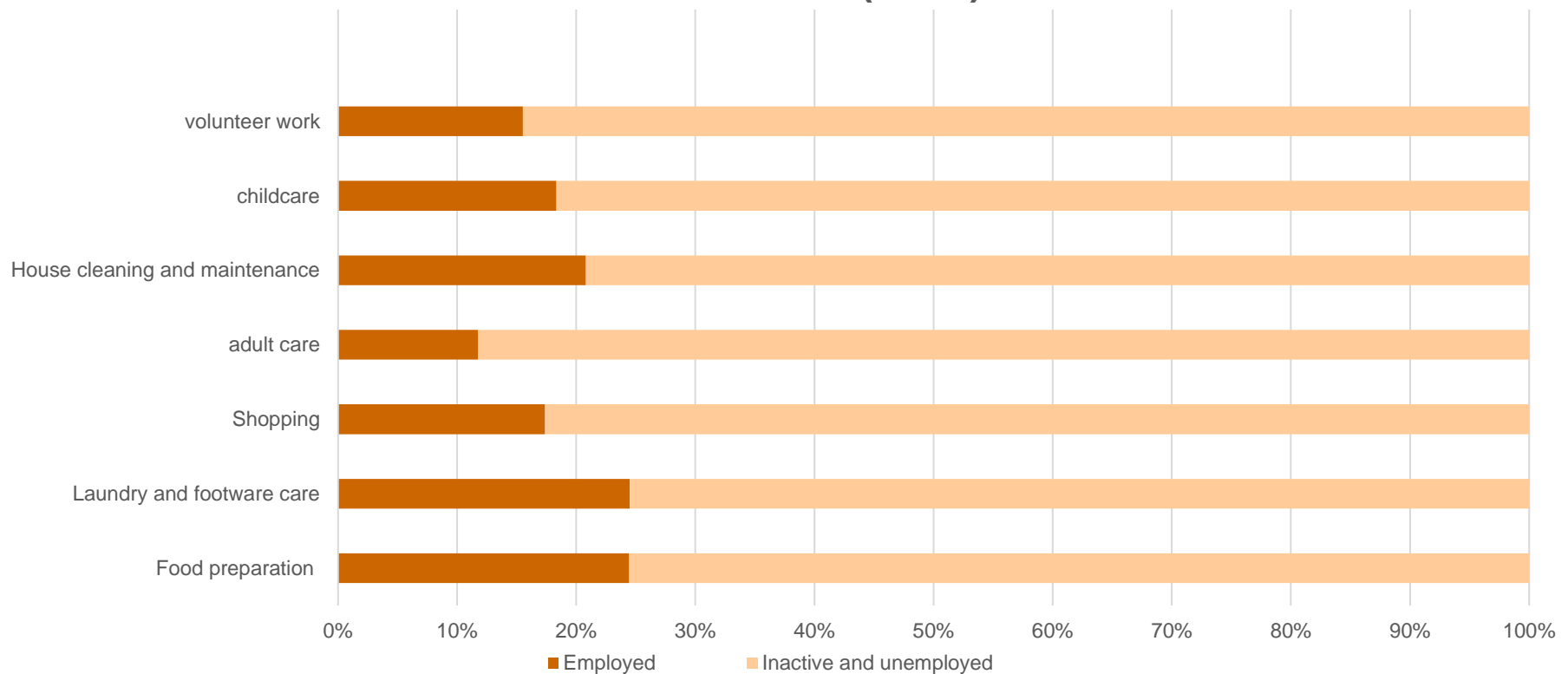
Women's and men's contribution to household's domestic VA





Household satellite account : Results

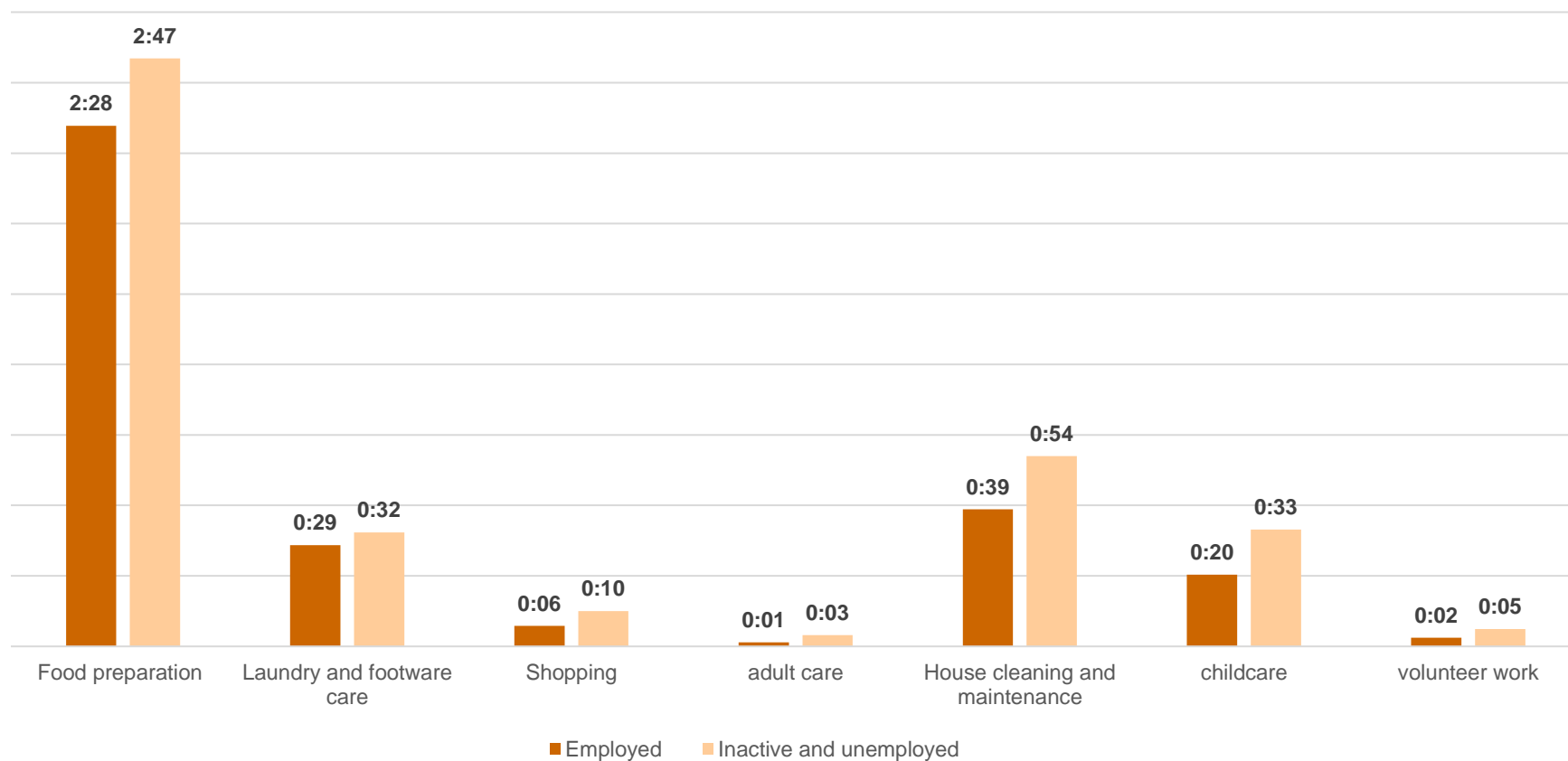
Contribution of employed and 'inactive and unemployed' women to household's work (en %)





Household satellite account : Results

Average daily time spent on housework by employed and « inactive and unemployed » women (in h:mn)





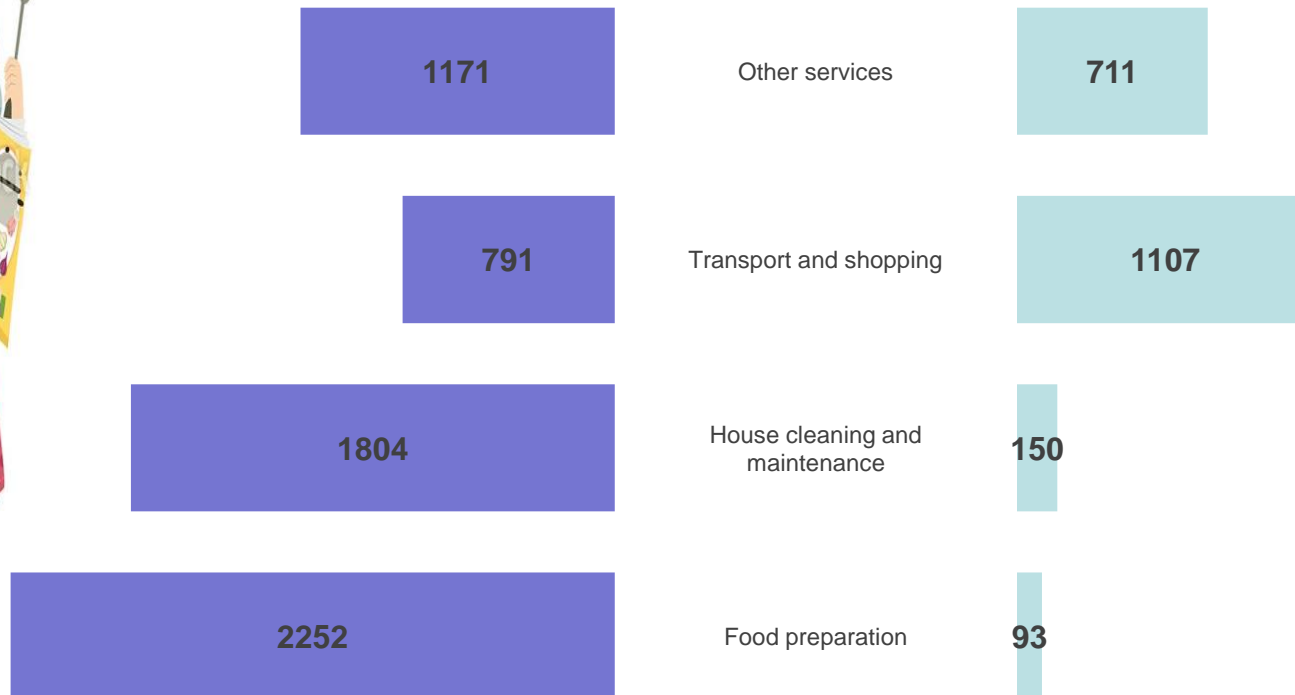
Household satellite account : Results

Contribution of girls and boys to households
(millions of MAD)



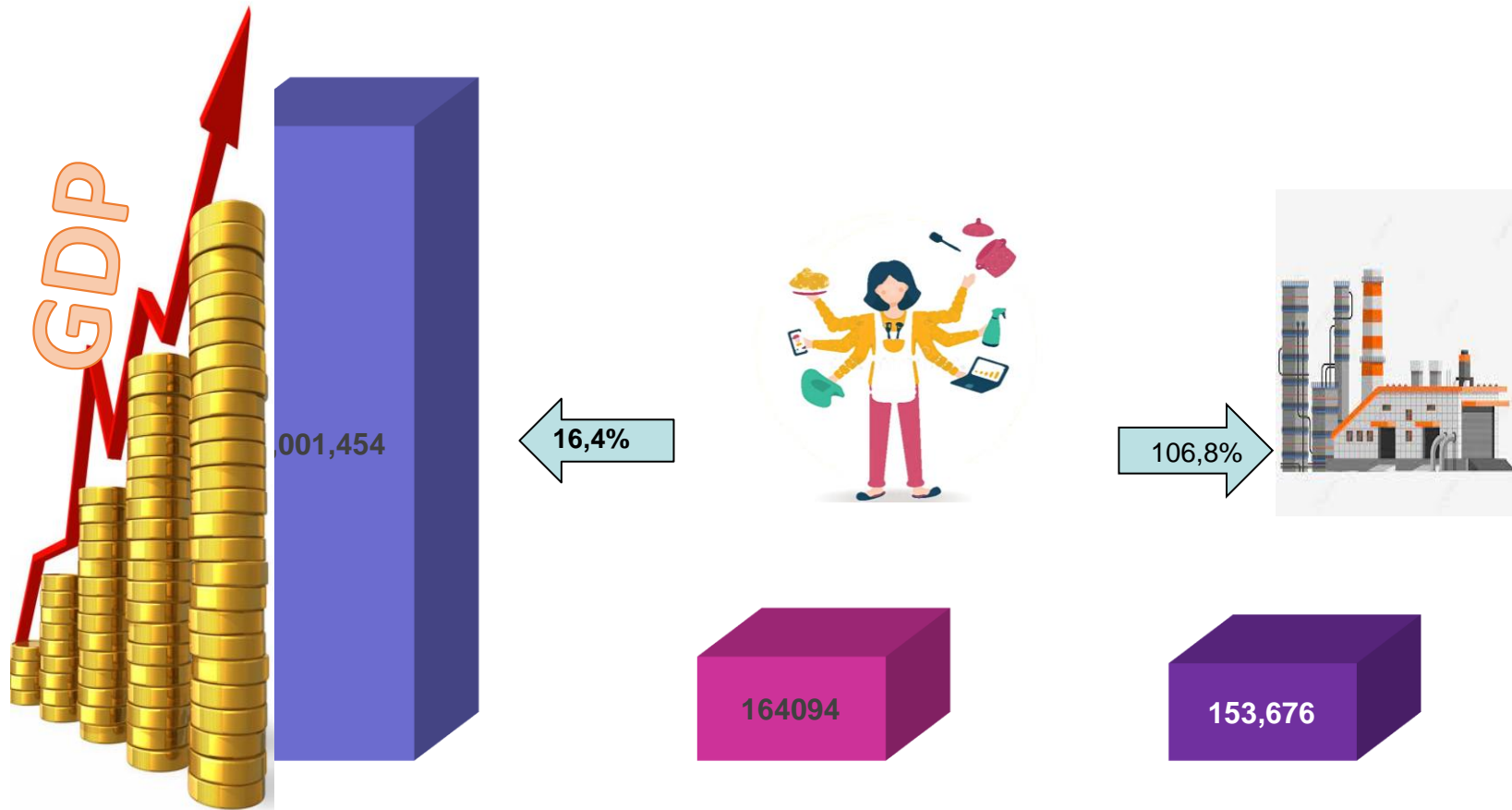
6 billions of
MAD

2 billions of
MAD





VA of women unpaid household work compared to DGP and Manufacturing VA





thank you for your attention