



IFAD engagement on GBF and support to NBSAPs



IFAD's Value Proposition

United Nations Agency



International Financial Institution



Increased production



Increased market access and income



Greater resilience



Our current global footprint



177

Member
states

96

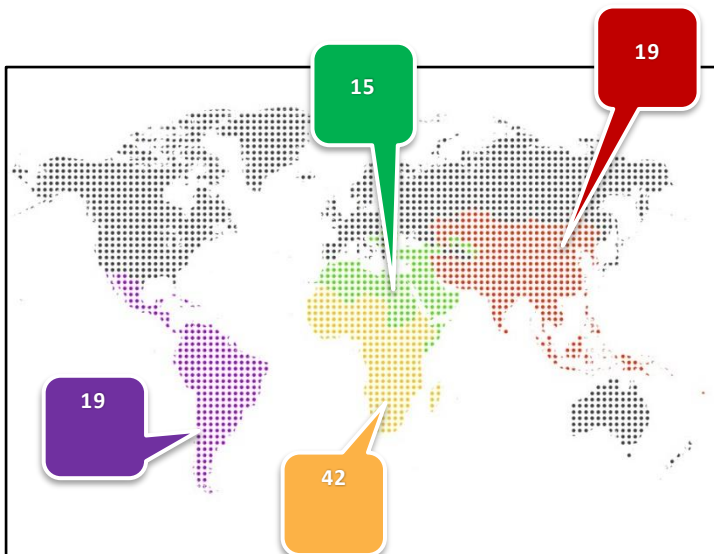
Beneficiary Countries

233

Projects

US\$8.4

Billion portfolio



- Agriculture & rural development
- Environment and Climate
- Forestry, Livestock, Fisheries
- Access to Financial Services
- Rural Infrastructure
- Capacity development
- Research
- Rural entrepreneurship



Near East, North Africa, Europe and Central Asia Division

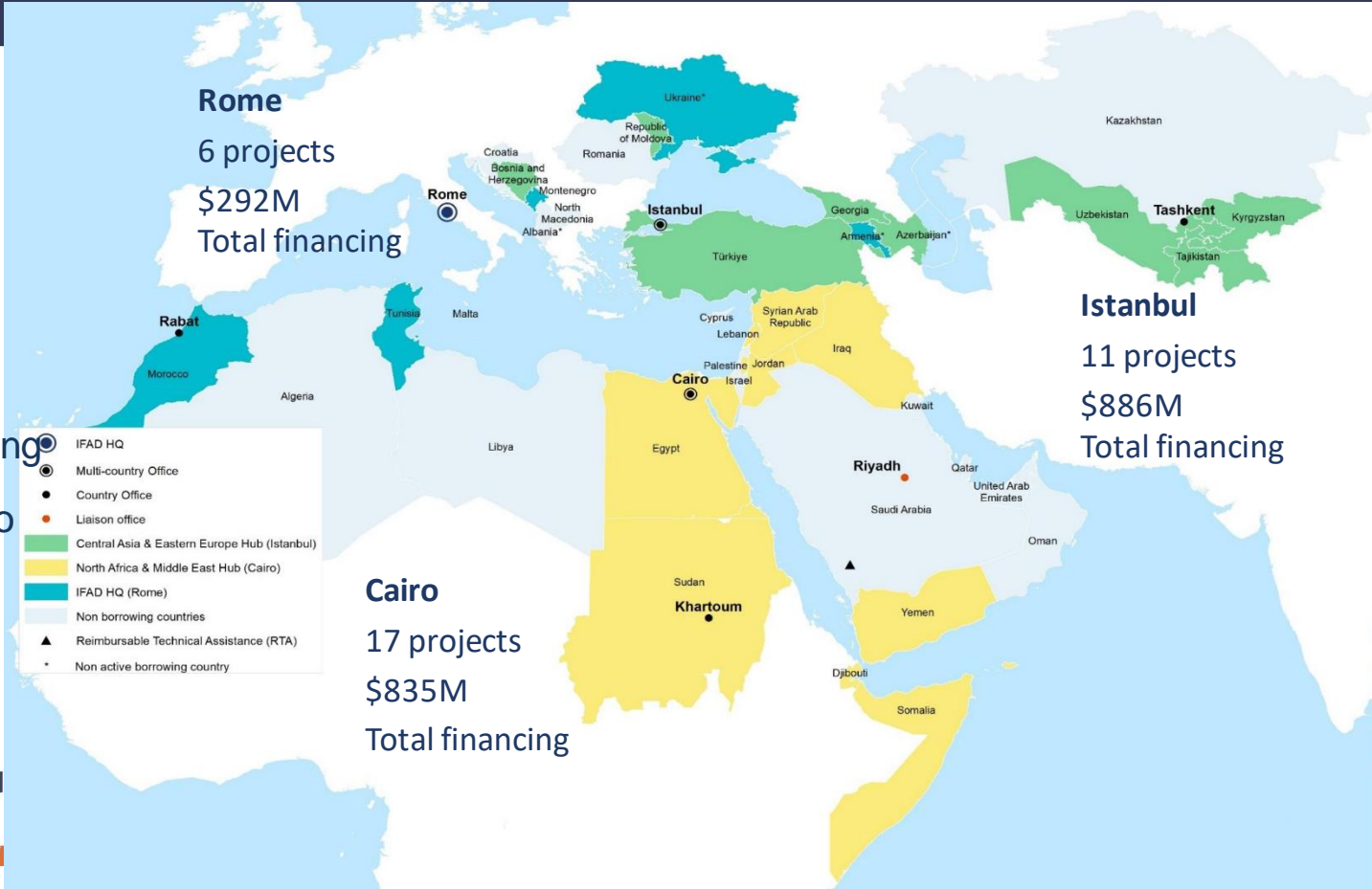


20 Countries

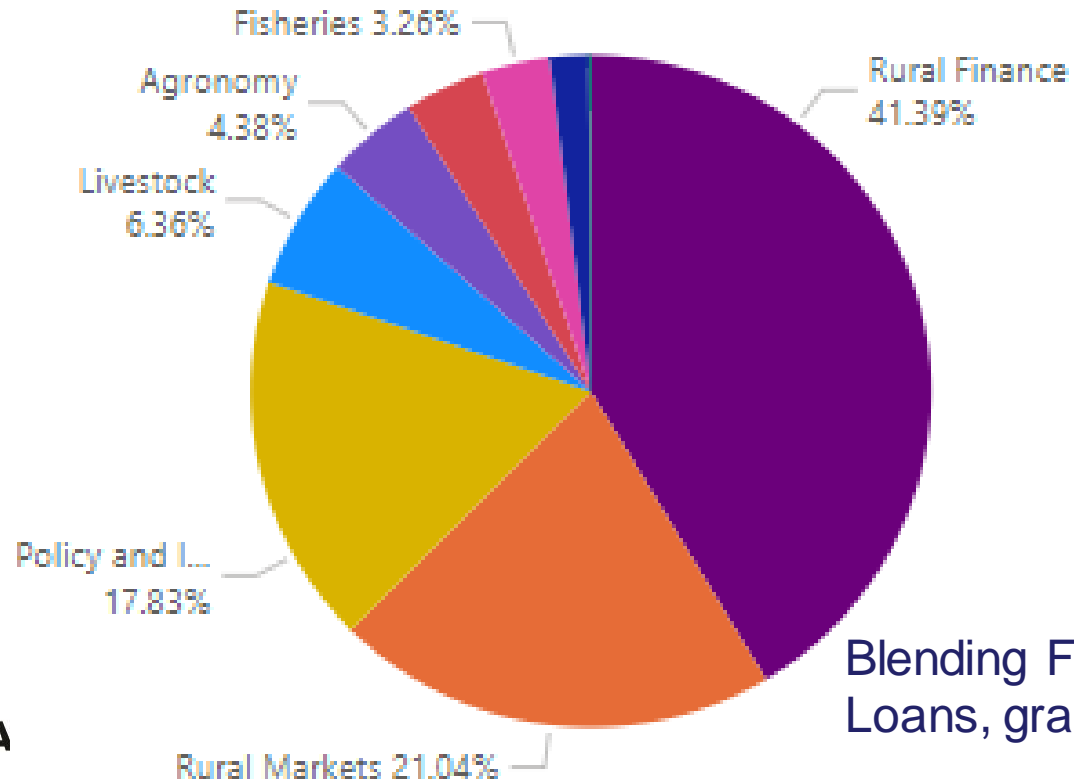
34 Projects

\$2.0B Total Financing

1.3 co-financing Ratio



IFAD Investment Themes



Blending Finance:
Loans, grants and supplementary funds

IFAD offer to GBF



GBF : Sustainable **land-use, agriculture animal production and forestry: T10 & 7**

- IFAD invest in sustainable rural development and food,
- Safeguards = 100% alignment to GBF
- 2/3 part agro-ecological from farm to market; 2 ongoing large grant to further improve approach



GBF: Landscape mngt incl **restoration, conservation and sustainable use**

- **70% IFAD projects contribute to biodiversity** restoration, conservation & use (NFtP etc.).
- Strengths = participatory resource management in productive landscapes
- Co-benefits: inclusion, income; 98% bring **climate** co-benefit & 60% bring **nutrition** co-benefits
- GIS tools and geospatial biodiversity indicator



GBF: Public private **finance & private sector engagement leveraging climate finance**

- Targeting and tracking climate and NbS finance
- Green finance (e.g. ASAP+, GEF, GCF and Adaptation Fund) ,
- Private funding (including NSO window & private sector engagement - VC),
- Government loans

Examples from the field: CASP+ Project

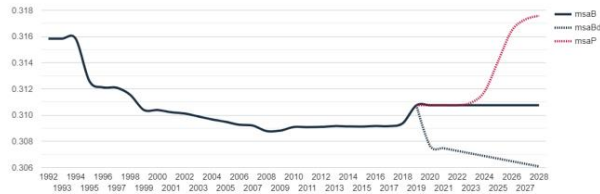
- Community-based Agricultural Support Project (CASP+), implemented in **Tajikistan** (2021-2026)
- Integrated action to improve livelihoods, enhance adaptation to CC and biodiversity conservation, at watershed level
- Piloting the new biodiversity assessment tool developed by FAO called **B-INTACT** that became **ABC map (our core indic)**



Using ABC Map to anticipate BD impacts

- Ex-ante impact assessment to inform design and/or Biodiversity Action Plan/Biodiversity Management Plan actions and mitigation measures

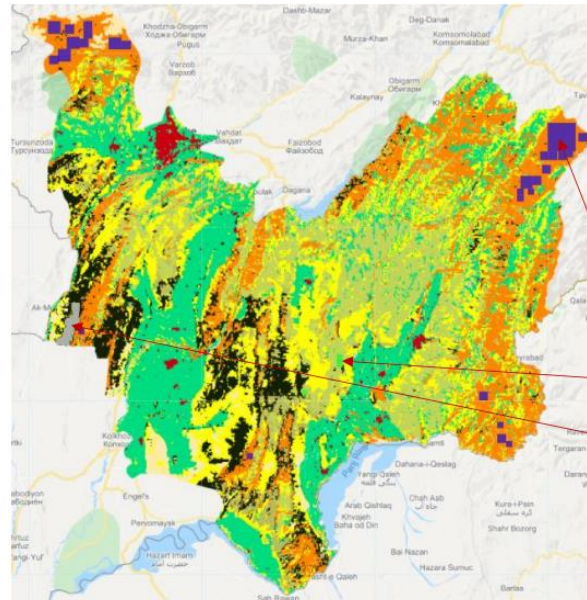
CASP+ MSA evolution with the project.



Source: ABC-Map.



CASP+ project intervention plots in AOI.



3) Rangeland management

2) Afforestation

1) + 3) Joint forest management

Forest	
Cropland, annual	
Cropland, flooded rice	
Cropland, perennial	2. Plot Land Use & Mgt
Grassland	Monoculture - Oil palm
Wetland	Monoculture - Olive
Settlement	Monoculture - Orchard
Other land	Monoculture - Rubber hevea
	Monoculture - Short rotation
	Monoculture - Tea camellia
	Monoculture - Vine
	Alley cropping
	Perennial fallow
	Hedgerow
	Multistrata
	Parkland
	Shaded perennial
	Silvoarable
	Silvopasture

Silvopasture	YEAR
no tillage	2025
reduced tillage	2026
full tillage	2027

low input
medium input
high input without manure
high input with manure

Examples from the field: A2R2 Project

- Adaptive Agriculture and Rangeland Restoration Project (A2R2), implemented in **Somalia** (2023-2028)
- GEF-funded approx. 5.8 million USD under biodiversity
- Focus on **rangeland restoration** with the double benefit of increased productivity and increased biodiversity conservation
- Development of Sustainable Pasture Plans mainstreaming biodiversity
- Participatory inventory of **native species** and relative benefits



Turkey - The Biodiversity Advantage - MURAT Case Study

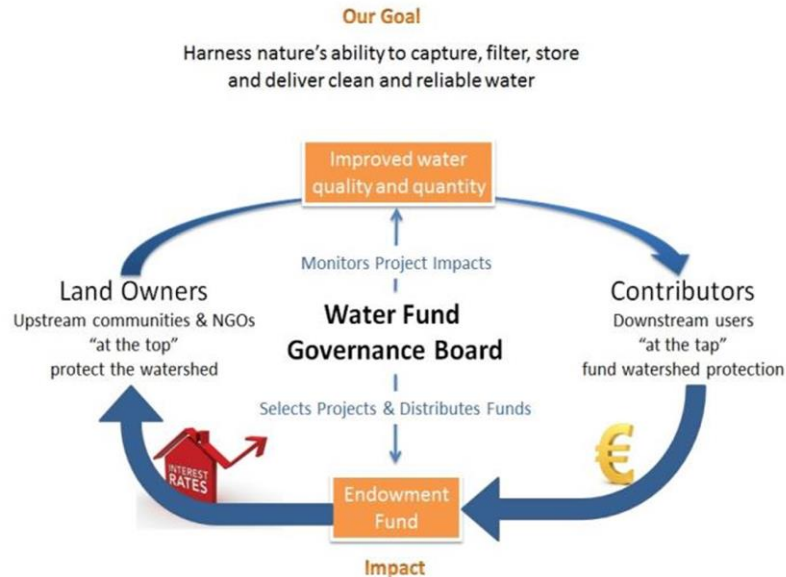
- Nursery/seedling led to 30% increase in vegetation cover in rangelands and 20% reduction in erosion



Examples on innovative landscape finance

- 21000 farming HH
- 2,413 ha of forests rehabilitated
- 7450 farms adopting agroforestry
- Planting of 996,440 assorted tree seedlings
- 97% reduction in human-wildlife conflicts
- Dependence on fuelwood reduced 50-60%

Kenya - The Upper Tana Initiative & Water Fund



100,000 HH with improved water

A cost-effective solution where the water supply is naturally replenished and filtered and rural livelihoods are improved

- ⇒ Innovative PPP model - 1:2 investment vs return ratio
- ⇒ Requires adaptation for drought with stronger de-risking

Tajikistan - Livestock and Pasture Development Project

- Sustainable pastureland management
- Livestock management
- Establishment of decentralized management units for pasture



Egypt - Advancing Climate Smart Aquaculture Technologies

- Aquaculture diversification:
Integrated crop-fish system
- Testing water-efficient culture systems



Nepal - Adaptation for Smallholders in Hilly Areas Project



- ASHA has developed and helped communities implement adaptation plans for 30 sub-watersheds
- Permaculture approach has also attracted the involvement of youth



IFAD offer to GBF



GBF: Enabling environment & policy

- Loan :engage Ministry agric-rural through policy dialogues, People participation & capacity dvpt
- UNCT ; EMG, UN decade ; & wide partnerships (e.g. Great Green Wall, IGREEFIN, etc.)
- Knowledge & evidence from project



GBF: One health – leverage consumers & diet

- Nutrition diversity commitment - 13,2 million people by 2025
- Market incentives for biodiversity: local markets, certifications, etc
- GEF's Food Systems Integrated Program co-lead



GBF seeks “**all of society**, including indigenous peoples and local communities”

- 30% of IFAD portfolio supports community-driven development incl land
- IFAD unique partnership with (IPs) & Farmer organizations: IP forum, ILC and financing facility.
- YOUTH engagement (GBYN in Morocco; youth hub & green jobs)
- IFAD strong targeting, safeguards (FPIC) & empowerment throughout projects
- Towards 40% gender transformative

Biodiversity and Value Chain: Eco shrimp farming

- Partnerships: IFAD-WWF – Seafood Company(Minh Phu) with funds from IFAD, DFCD, Adaptation Fund
- Location: Mekong Delta – Vietnam: Trà Vinh – Ben Tre provinces.
- Benefits:
 - ❖ Increasing international market.
 - ❖ Restore the natural sedimentation, naturally fertilized by shrimp manure and healthy flood-borne sediment.
 - ❖ Biodiversity conservation, additional niched products (NTFP, honey, ecotourism)
 - ❖ Higher premium, hence income for farmers.

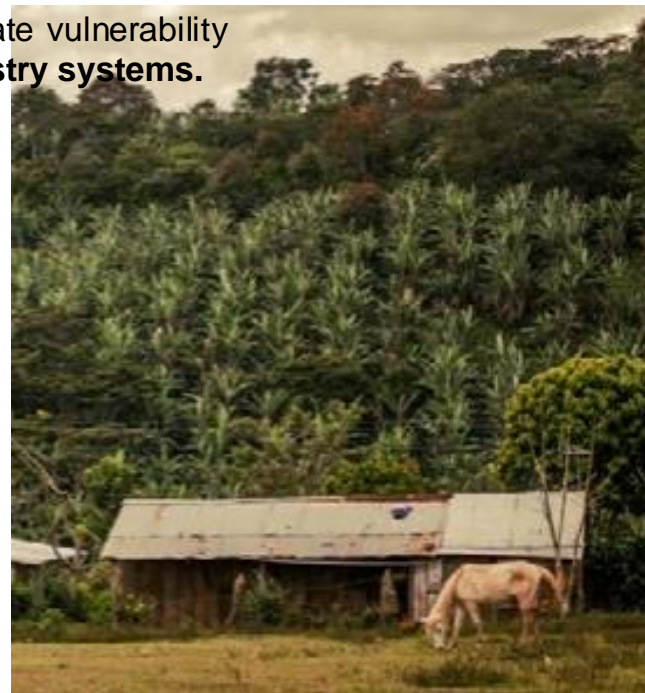


AgroBiodiversity and market

Adapting to Markets and Climate Change Project, Nicaragua

The project aimed to improve incomes and quality of life and reduce climate vulnerability through a combination of **diversified agricultural systems** and **agroforestry systems**.

- 1,900ha of cocoa and 4,344ha of coffee under shade grown systems
- 80,000 plants of *Musaceae* planted
- 30,000 plants of fruit varieties and 20,000 plants of timber species planted
- 5,872 m² of forest area protected and reforested
- 66% of farmers adopted agroforestry practices
- 50% reduction in firewood consumption



Agro Biodiversity-NfTP & nutrition

African leafy vegetables in Kenya and Tanzania

Native African leafy vegetables like amaranth, spider plant, jute mallow, pumpkin leaves, African nightshade, nettles or cowpea have high nutritional values and higher vitamin A and iron content compared with introduced vegetables that are grown for export.



Tunisia – Biodiversity youth & jobs

Hasna graduated from university in [Tunisia](#) with a degree in genetics and biodiversity. Like so many other young people, she struggled to find employment.

[PRODEFIL](#) : received training and the necessary material for beekeeping.

Today, Hasna tends to her bees, produces and sells about 50 litres of organic honey a year and safeguards local biodiversity.

Through their pollination, the bees have also helped to increase crop yields in nearby fields.



“It’s time to believe in us—rural youth everywhere—as agents of change and sustainable development, and as political actors who will build the future in an equitable and inclusive way,” says Hasna.



IFAD Experiences

IFAD offer for the delivery of the Global Biodiversity Framework (GBF)

GFB targets	IFAD offering
<p>Target 1, 2 3 & 10: Landscape management, conservation, restoration and sustainable agriculture</p>	<ul style="list-style-type: none"> ▪ GIS tools and geospatial biodiversity indicator ▪ Part UN decade restoration; conservation & buffer ▪ Social and Environmental Safeguards
<p>Target 1, 2, 5, 9, 19, 21, 22, 23: Indigenous people and local communities</p>	<ul style="list-style-type: none"> ▪ Community-driven development approach ; empowerment & participation ▪ Indigenous People forum and financing facility ▪ Mainstreaming themes: gender, nutrition, youth, IP
<p>Target 10, 13, 14, 15, 16: Enabling policy and regulatory framework</p>	<ul style="list-style-type: none"> ▪ Loan often support dialogues, People participation & capacity ▪ UNCT ; UN decade ; and policy and partnerships (e.g. Great Green Wall, UN Decade, IGREEFIN, etc.) ▪ Knowledge & evidence from project
<p>Target 14, 15, 19: Finance mobilisation and private sector engagement</p>	<ul style="list-style-type: none"> ▪ Public-private finance aggregator: member states' commitment, executing agency of GEF and GCF and non-sovereign funds from private sector ▪ Private sector investment strategy
<p>Target 12; 16: One Health – Food system approach</p>	<ul style="list-style-type: none"> ▪ Nutrition commitment - 13,2 million people by 2025 ▪ Market incentives for biodiversity: local markets, certifications, etc ▪ GEF's Food Systems Integrated Program co-lead
<p>Target 8, 11, 19: Synergies with climate</p>	<ul style="list-style-type: none"> ▪ NbS commitment – 30% of climate finance is nature-based solutions ▪ Joint climate and biodiversity finance resource mobilization
<p>Targets 20, 21, 22: Knowledge sharing and capacity building</p>	<ul style="list-style-type: none"> ▪ Projects' knowledge management systems ▪ Knowledge platform sharing: UN Decade Ecosystem Restoration, Community of

IFAD Partnership in action on the ground 1/2



Agroforestry



Rangeland management



Watershed management



Conservation agriculture



Drip irrigation



Rainwater harvesting



Biogas



Reforestation & afforestation

IFAD Partnership in action on the ground 2/2



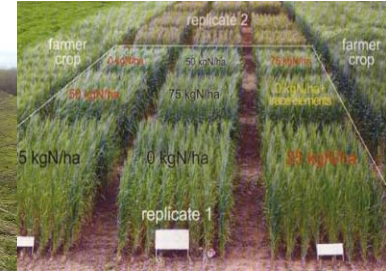
Early Warning systems



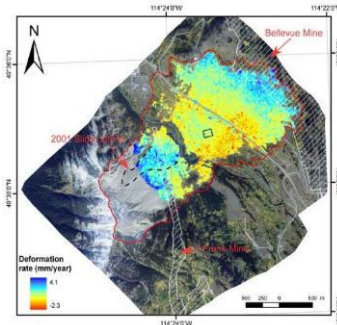
Financial services for risk management & transfer



Access to better weather information



Drought/salt/flood - tolerant crop options



Risk analysis



More robust/flexible infrastructure



Post-harvest protection



Green technologies



Investing in rural people



Thank You

La chaîne du Mont-Liban

Clement Tannoury
CLÉMENT TANNOURY
CHASSEUR PHOTOGRAPHE
Copyright © www.clementtannoury.com

Liban: Sur la terre comme au ciel
Lebanon: On Earth As It Is In Heaven

