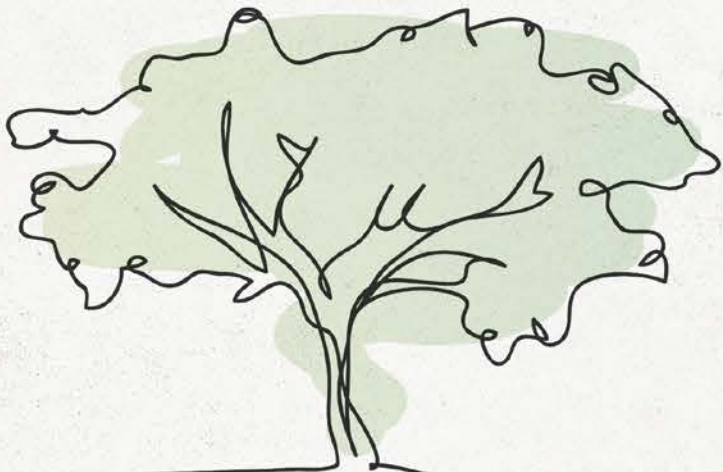




Reforestation needs: The case of Lebanon

Lebanon Reforestation Initiative
Dr. Maya Nehme

02/16/2022



LRI Vision, Mission & Programs

Our Vision

Long Term Sustainable forest landscape restoration and management across Lebanon.

Our Mission

LRI aims at conserving and expanding Lebanon's forests through a community-based approach and public-private partnerships. In addition, LRI also aims at empowering communities to advocate to better manager their forest resources.

Our Programs

Integrated Landscape Management

Climate Change Resilience

Research & Development

Environmental Education,
Awareness and Capacity
Development

Environmental Advocacy &
Lobbying

Urban Forestry

Rural Tourism

Lebanon and SDG 15

- Serious **degradation** of terrestrial landscapes
- Lebanon lost a good proportion of its green cover over the last decades
- We're losing more every year to **forest fires**
- **Overgrazing** is causing further deterioration in rangeland and limiting the capacities of forests to regenerate after fires or clear cutting
- The recent **fuel crisis** has increased illegal logging
- The **economic crisis** is also limiting the availability of funds dedicated for reforestation as most is going for livelihoods support or post COVID response



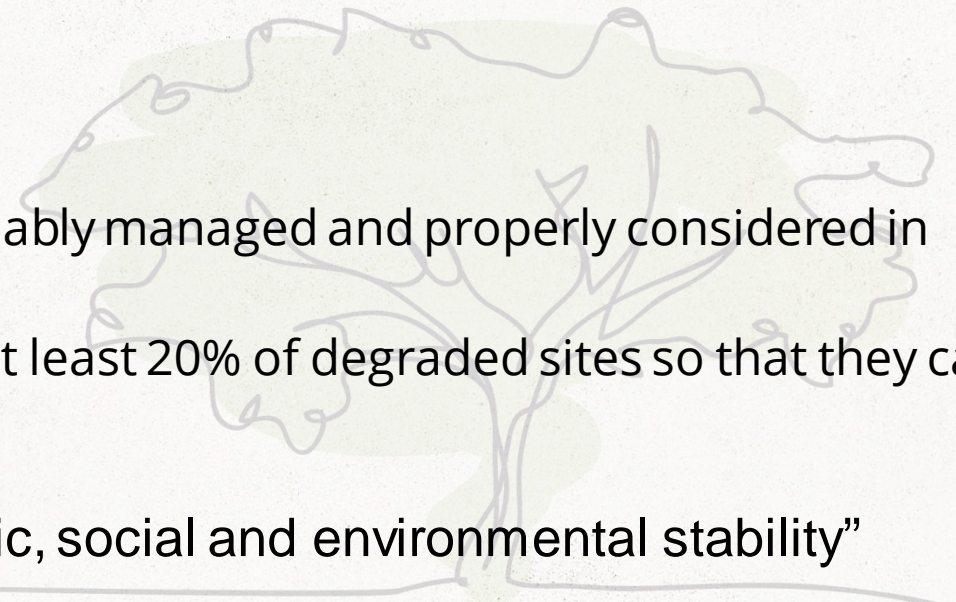
Lebanon's commitments

- **National voluntary LDN targeted measures:**

- Restore forest landscapes through reforestation and afforestation on at least 10,000 hectares;
- Implement Sustainable Forest Management practices ...thus reducing the occurrence of forest fires and the conversion of forests into other land-uses
- Restore and manage grasslands in high mountain areas on at least 1,000 hectares;
- Promote sustainable agricultural practices on at least 80,000 hectares;
- Enhance the sustainability of cities and towns through the development of urban and peri-urban forestry and the implementation of agro-sylvo-pastoral practices;

- **CBD targets:**

- TARGET 6: By 2030, 50% of all natural ecosystems are sustainably managed and properly considered in spatial planning implementation
- TARGET 9: By 2030, rehabilitation plans are implemented in at least 20% of degraded sites so that they can safeguard the sustained delivery of ecosystem services
- LCRP's strategic objective "Reinforce Lebanon's economic, social and environmental stability"
- NPMP and NARP



What we have been doing..



Integrated Landscape Management

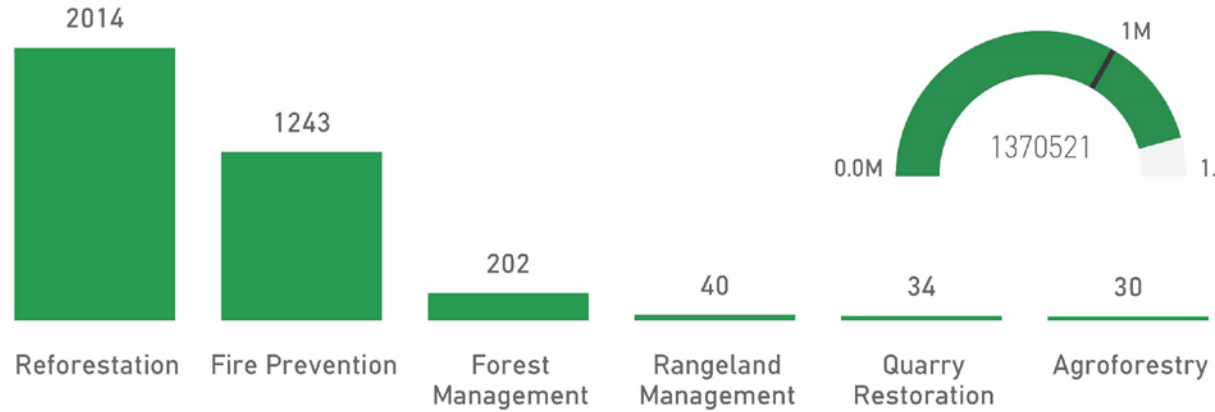
Intervention	Land Plots
Agroforestry	12
Climate Change	5
Community Garden	5
Ecotourism	23
Fire Prevention	782
Forest Management	62
Quarry Restoration	3
Rangeland Management	12
Reforestation	286
Riparian Restoration	34
Rural Tourism	4
Urban Forestry	23
Wildlife Conservation	3
Total	1219

214
Towns

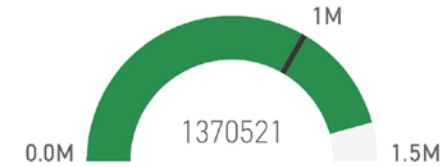
3,627
Hectares managed

72
Species

Area (Ha) by Intervention Type



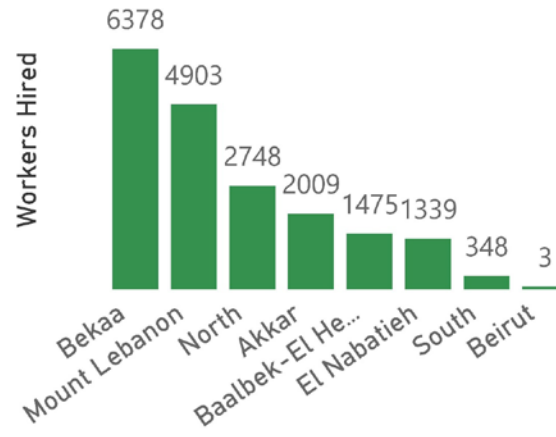
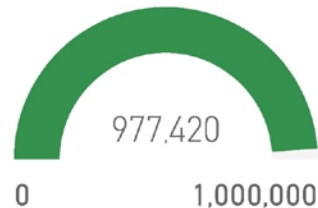
Seedlings planted



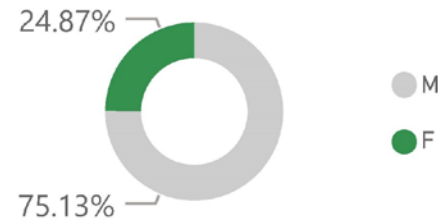
Livelihoods Support

13,034 Jobs Created
7,840 60% Youths

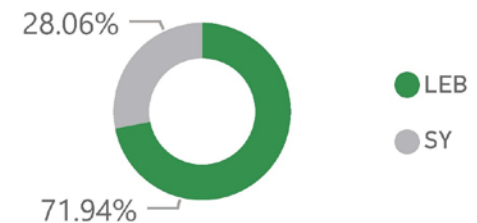
Worker Days Achieved



Workers by gender 2021



Workers by Nationality



Institutional/technical capacity building and in-kind support to more than 26 CBOs



#تحرك_قبل

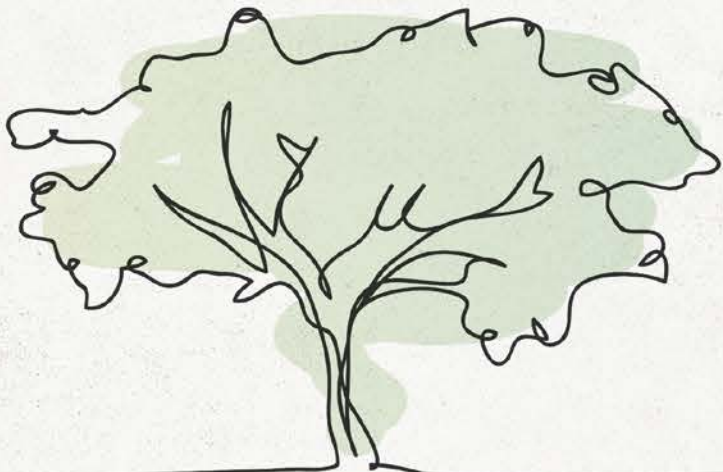


What is needed....

- **More targeted cooperation on the national, regional and global level**
- **Continued work on awareness and education**
- **Pooling of resources, coupling support in economic crises with natural resource management**
- **Bridging science and practice- ensuring practices applied are based on scientific research and studies**
- **Incorporation of sustainable management of natural resources in national policies and budgets**
- **Channeling youth and women energy for higher impacts**



Grow Forests, Change Lives



www.lri-lb.org



Lebanon Reforestation Initiative



LRILB