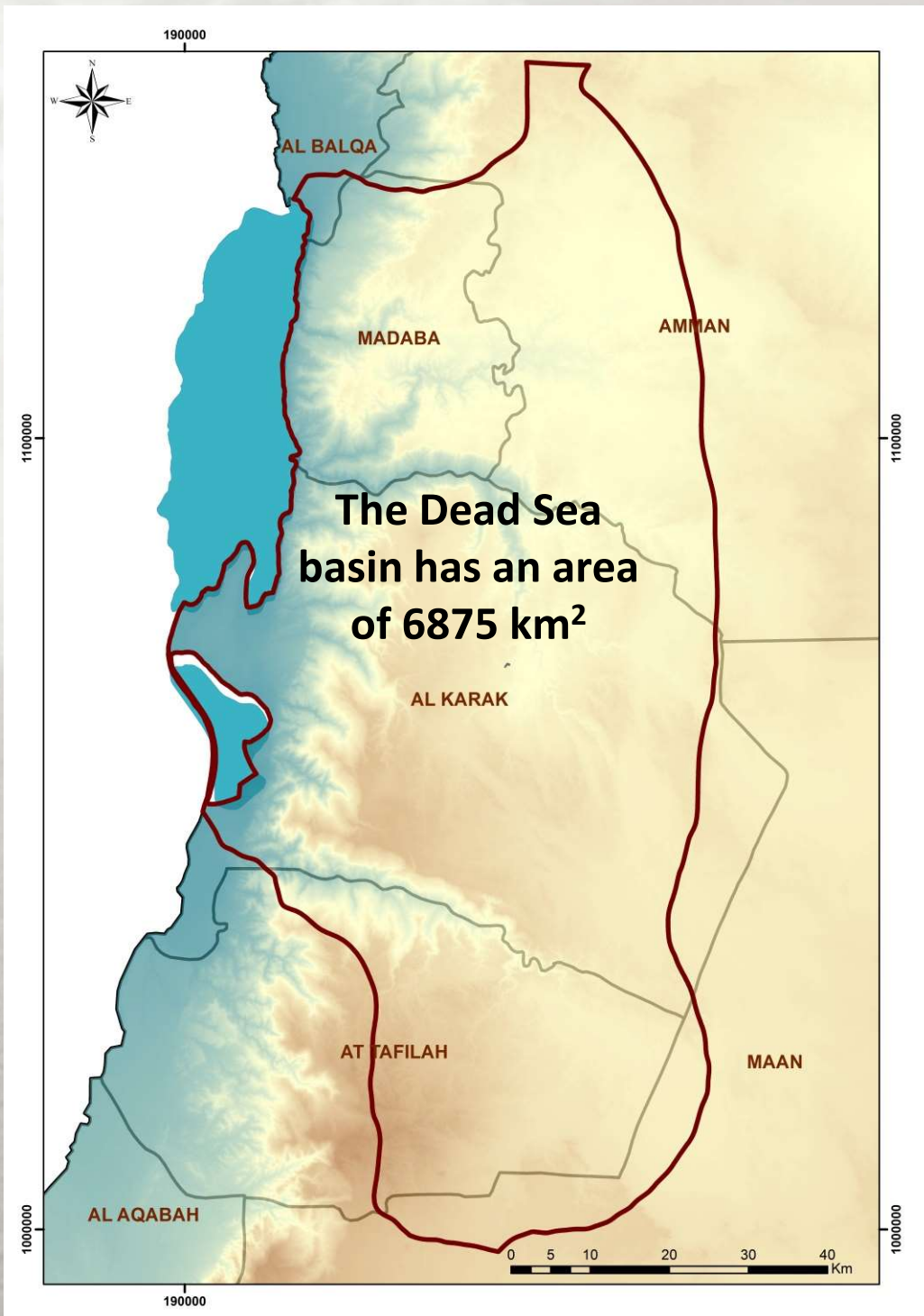


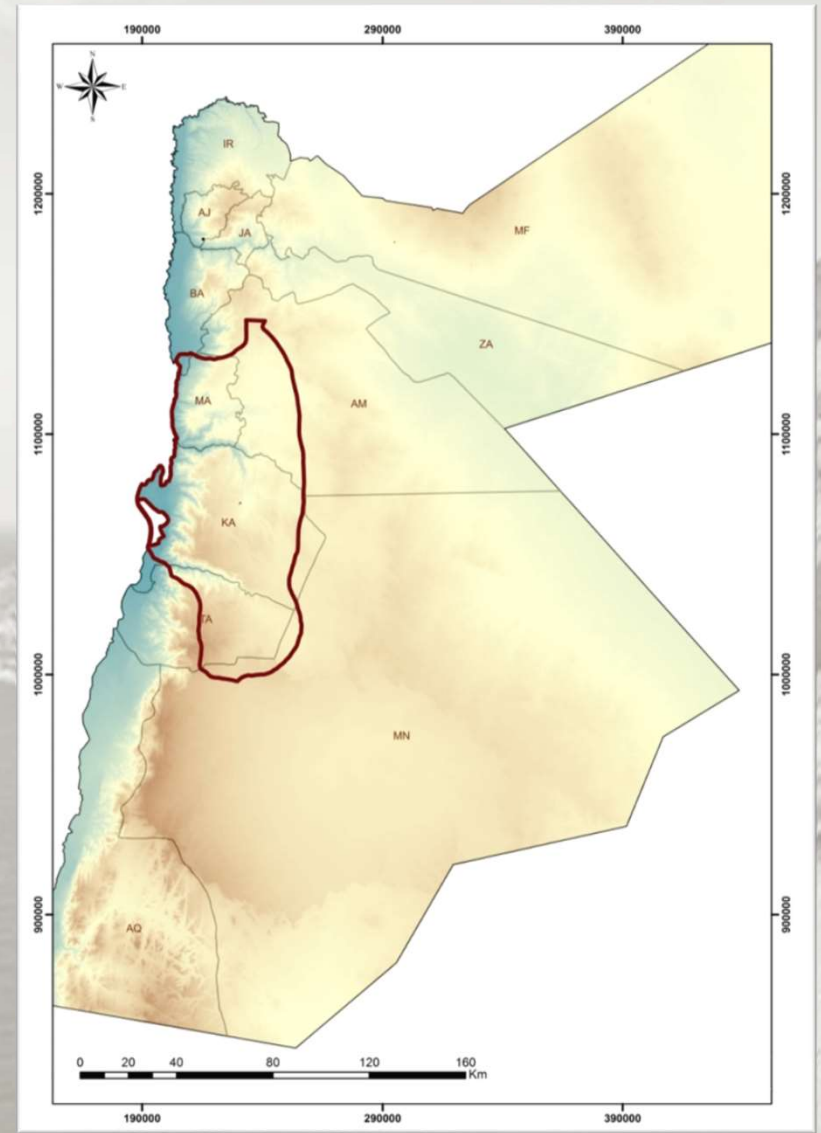
# Dead Sea Basin

دراسة التغيرات في تخزين المياه  
الجوفية من خلال استخدام بيانات البعثة  
السائلية التجريبية للمناخ وقياس  
الجاذبية GRACE لتحسين إدارة المياه

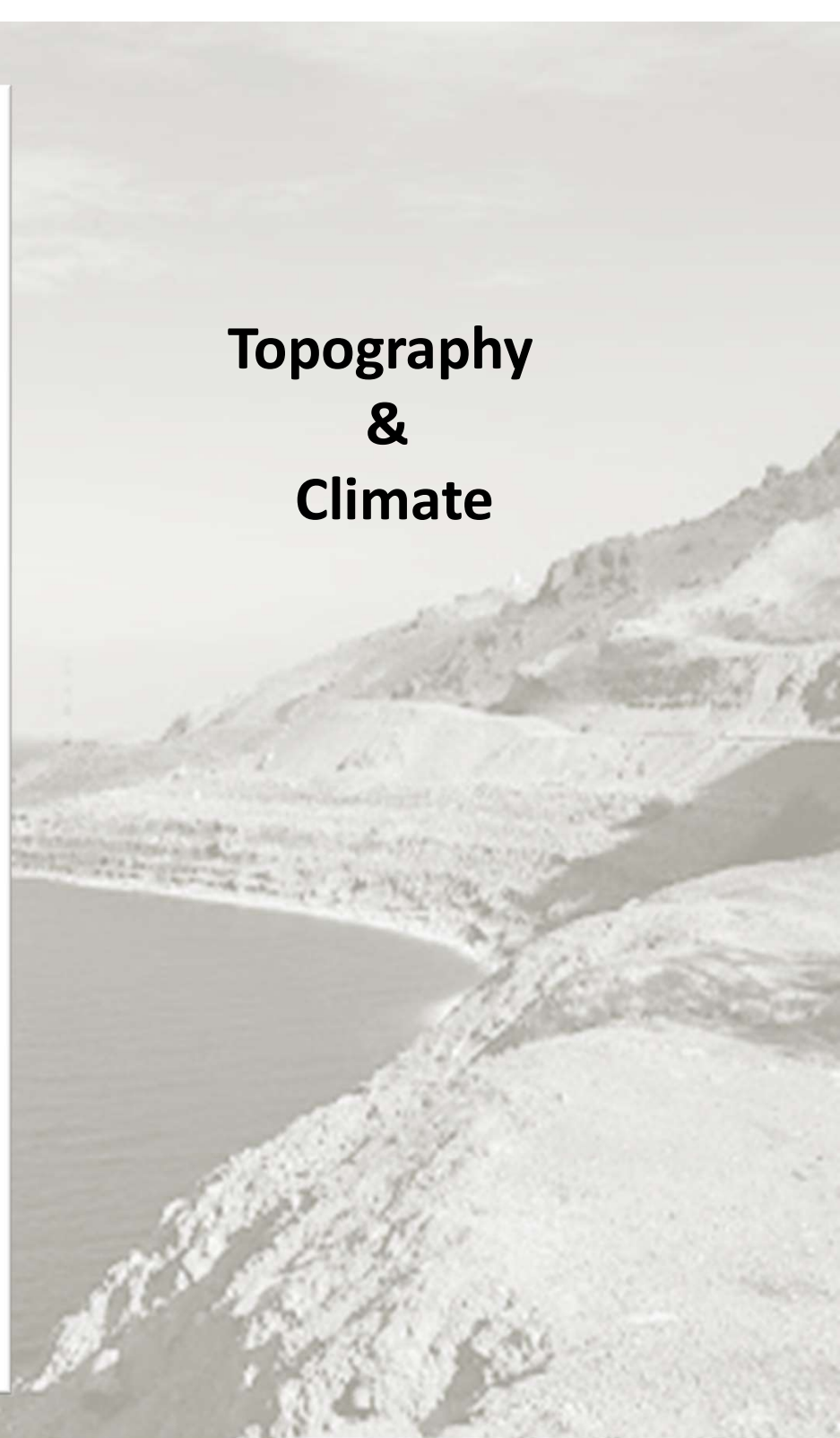
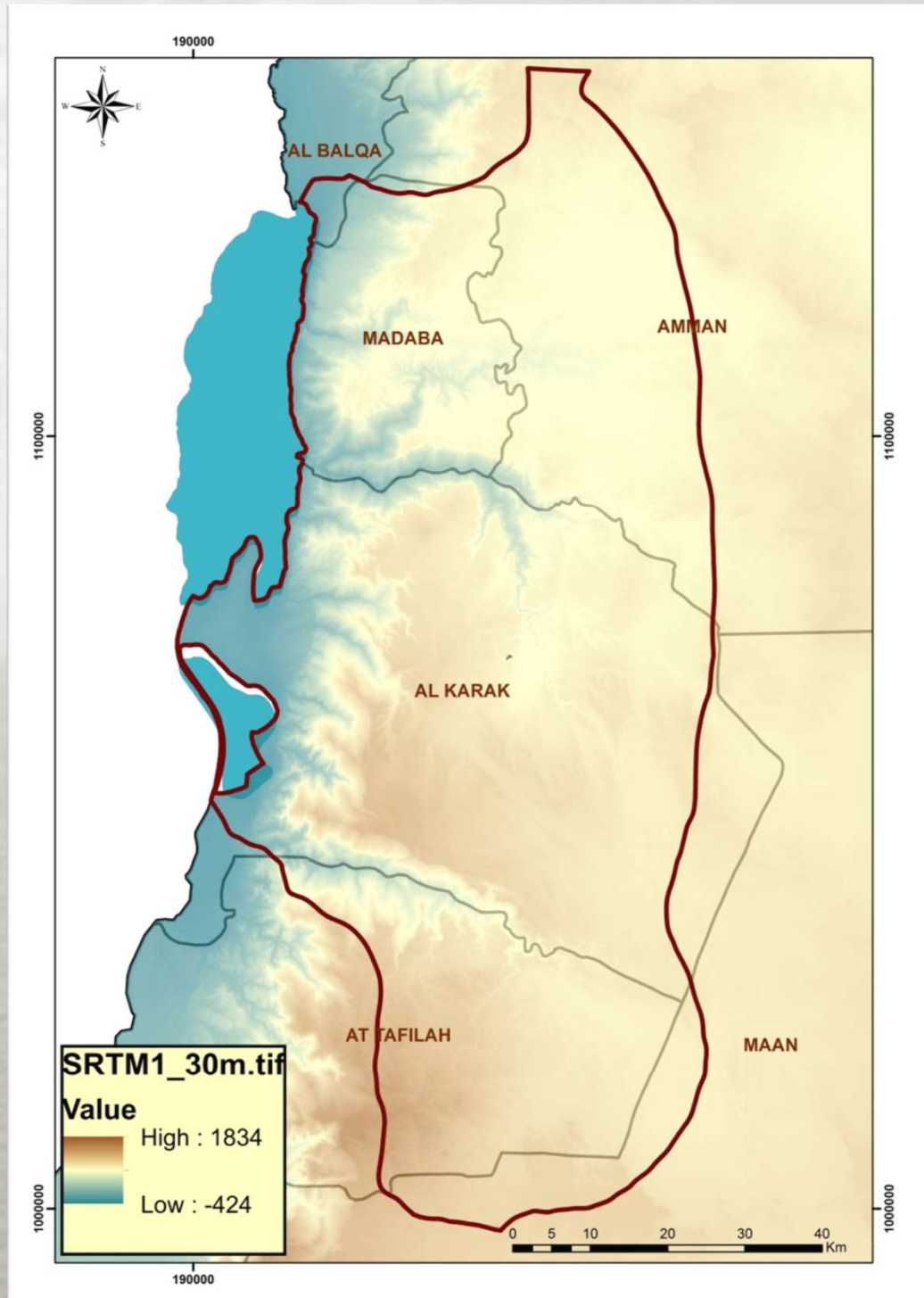
*Geo Alaa Attieh*



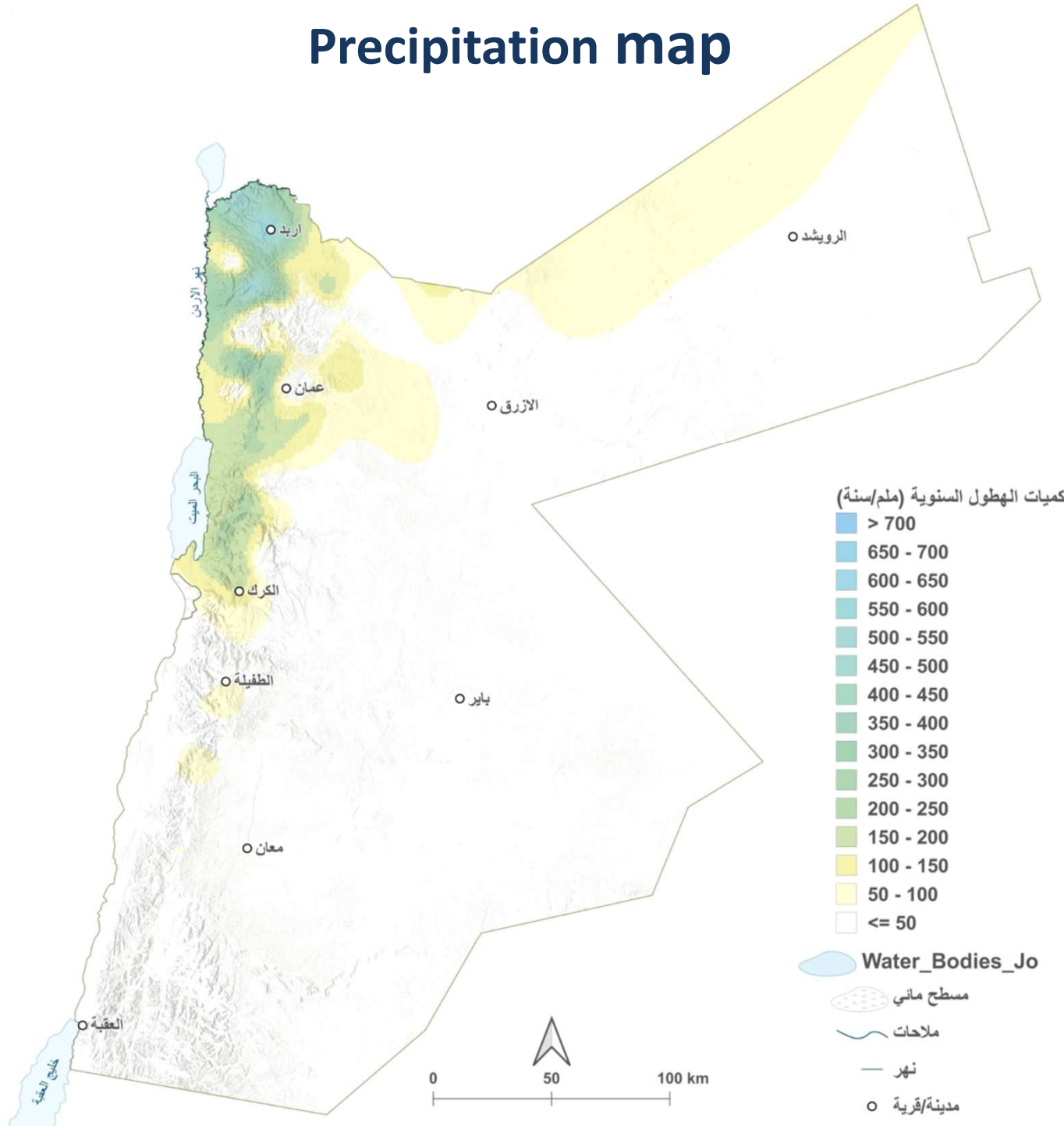
## DSB Location map

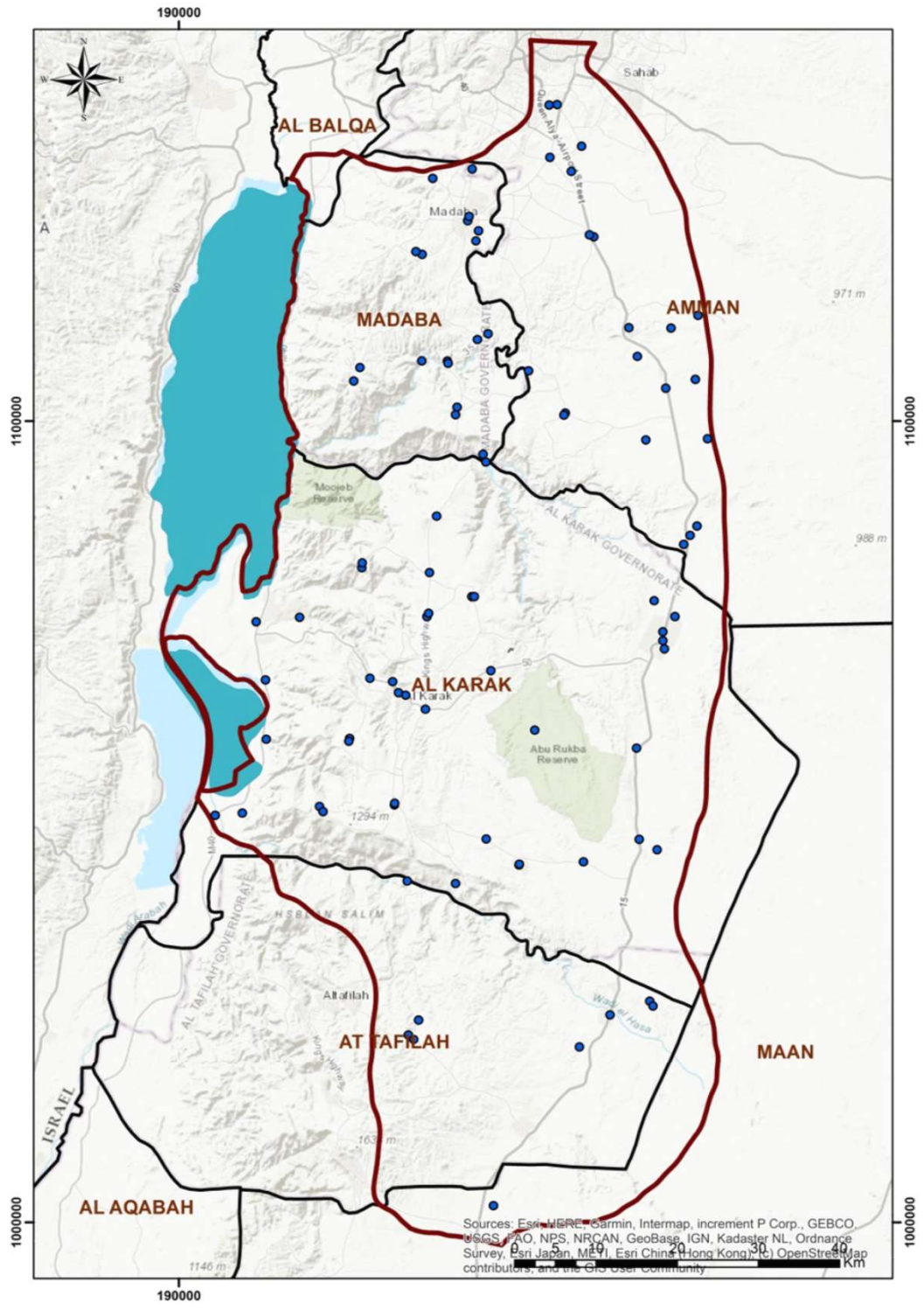


# Topography & Climate



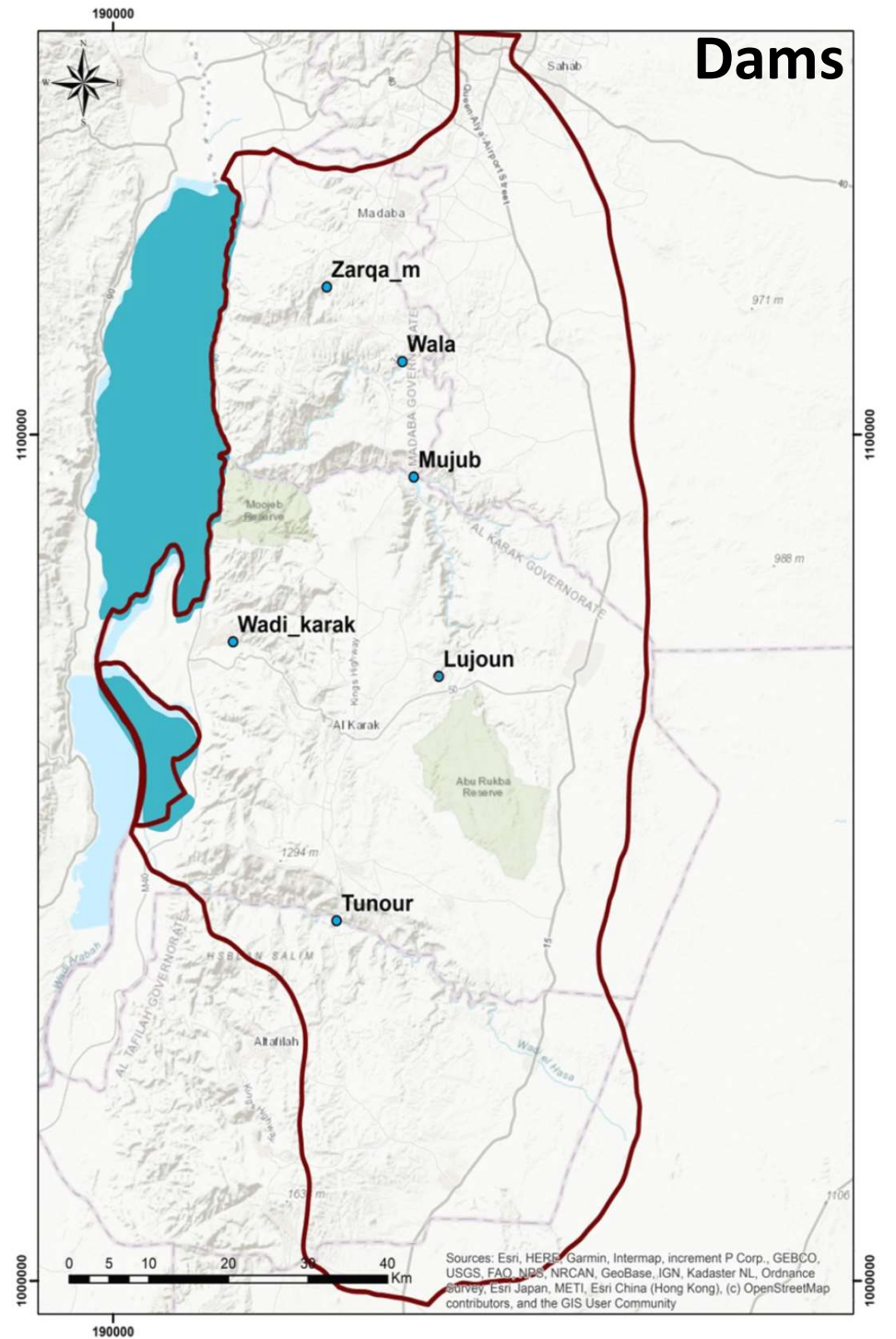
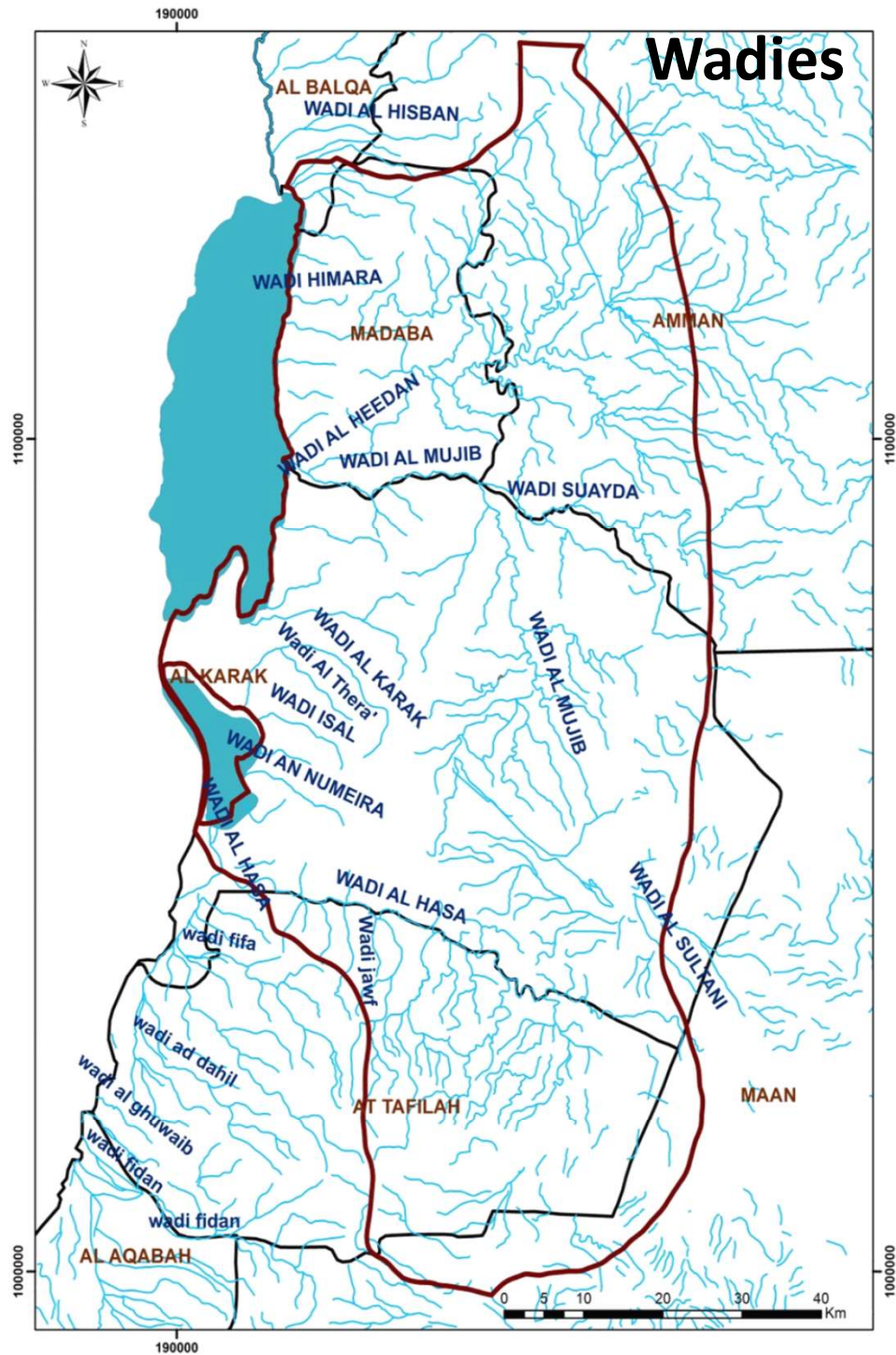
# Precipitation map



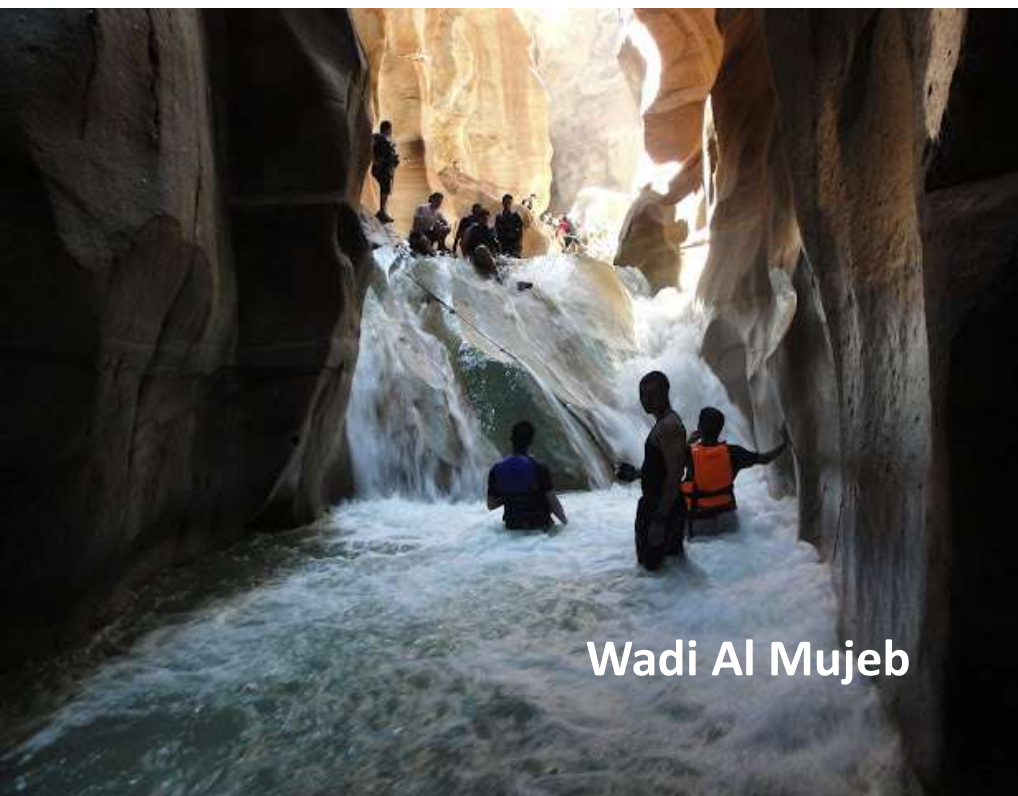


# Rain & Climate Stations





Sources: Esri, HERE, Garmin, Intermap, increment P Corp., GEBCO, USGS, FAO, NPS, NRCAN, GeoBase, IGN, Kadaster NL, Ordnance survey, Esri Japan, METI, Esri China (Hong Kong), (c) OpenStreetMap contributors, and the GIS User Community



Wadi Al Mujeb



Wadi Al Hedan



Wadi Al Karak

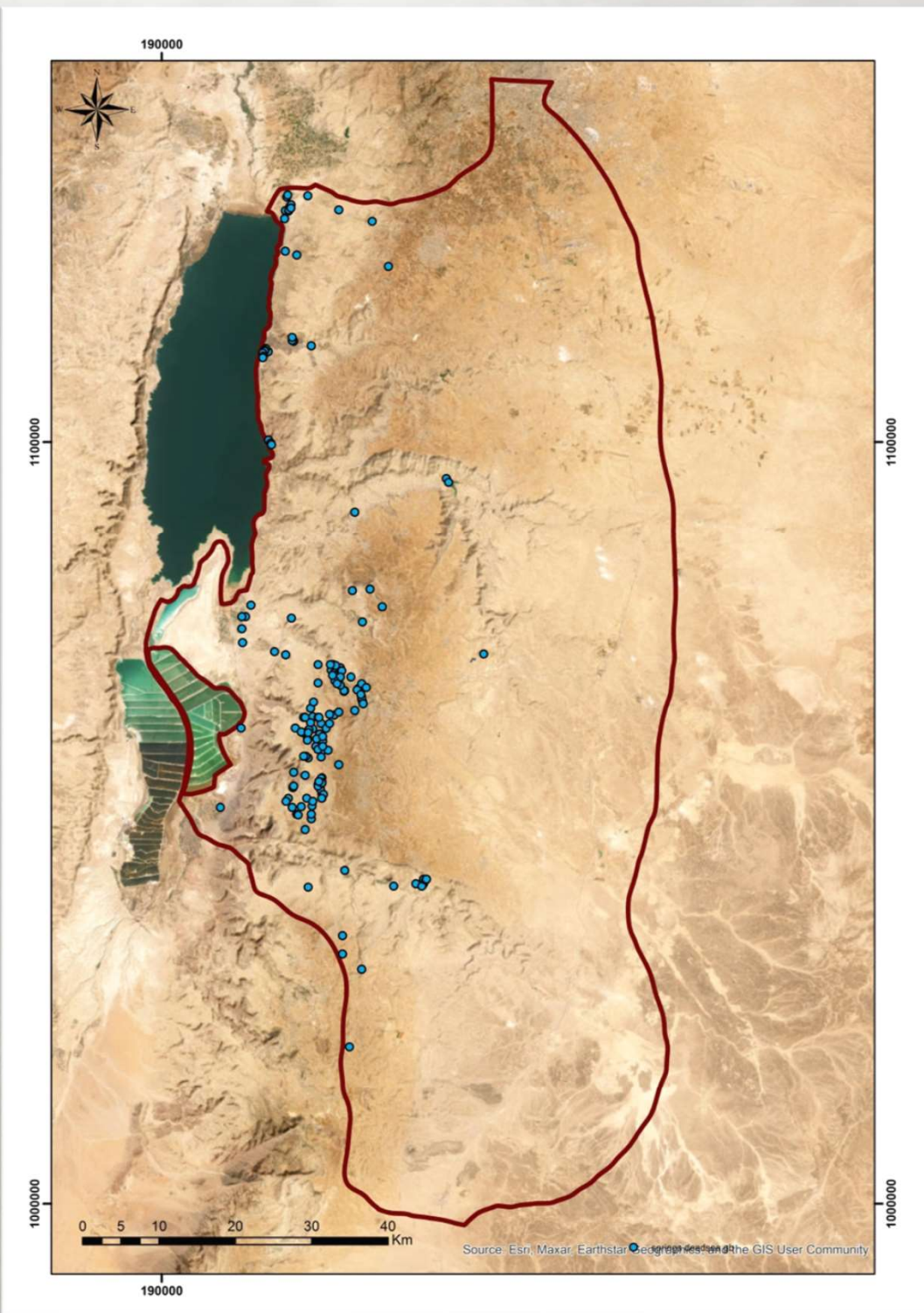
معلومات الأردن  
JordanRec.co



Wadi Numera

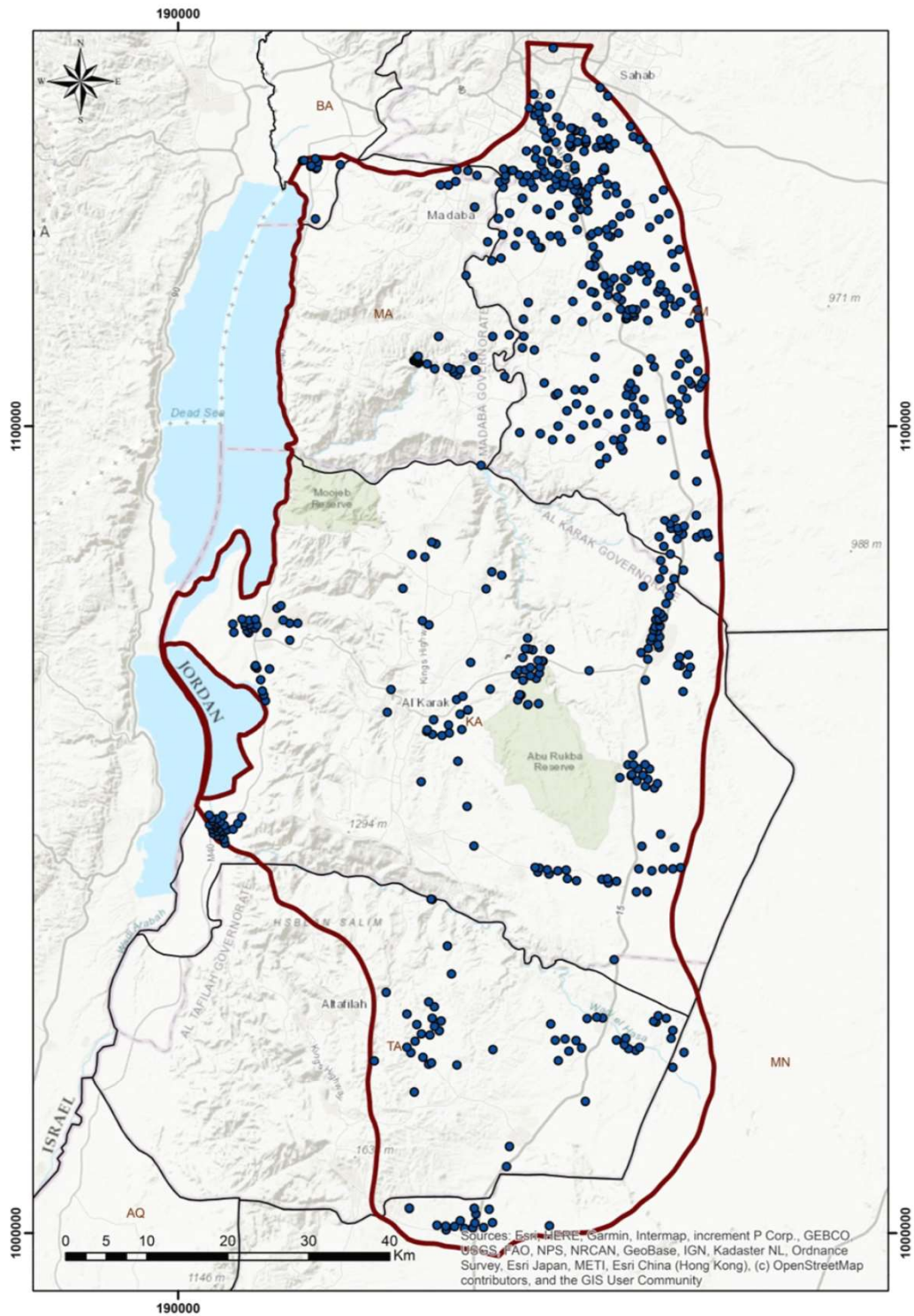
| <b>Dam</b>         | <b>Design Capacity (MCM)</b> | <b>Usage</b>                           |
|--------------------|------------------------------|--|
| <b>Zrqaa maeen</b> | 1                            | Irrigation & recharge                  |
| <b>Allajon</b>     | 2                            | Irrigation & recharge                  |
| <b>Tanour</b>      | 16.8                         | irrigation & industrial uses           |
| <b>Wala</b>        | 8.2                          | Irrigation & recharge                  |
| <b>Mujeb</b>       | 29.8                         | Drinking, irrigation & industrial uses |
| <b>Karak</b>       | 2                            | Irrigation & recharge                  |





# Springs





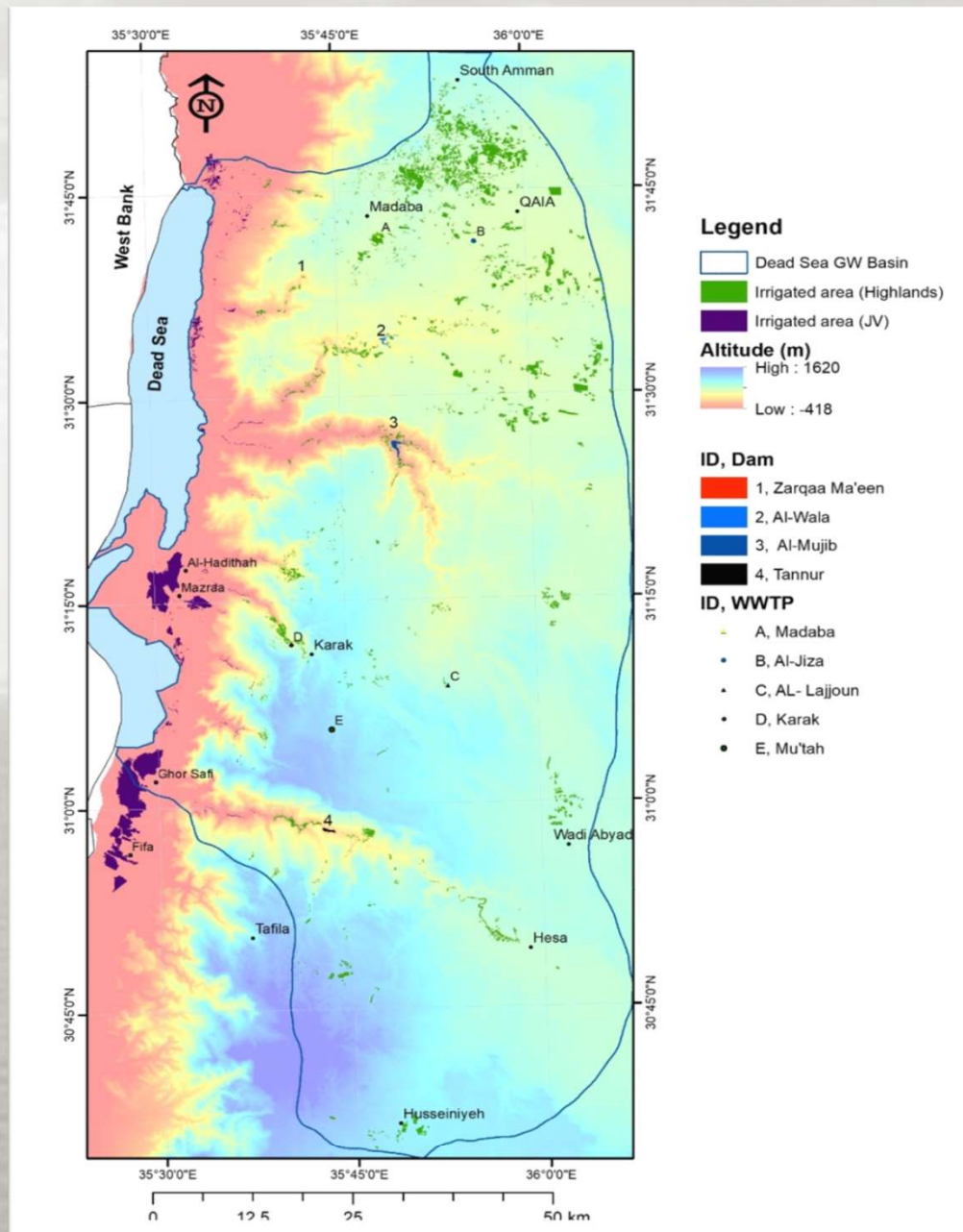
# Wells



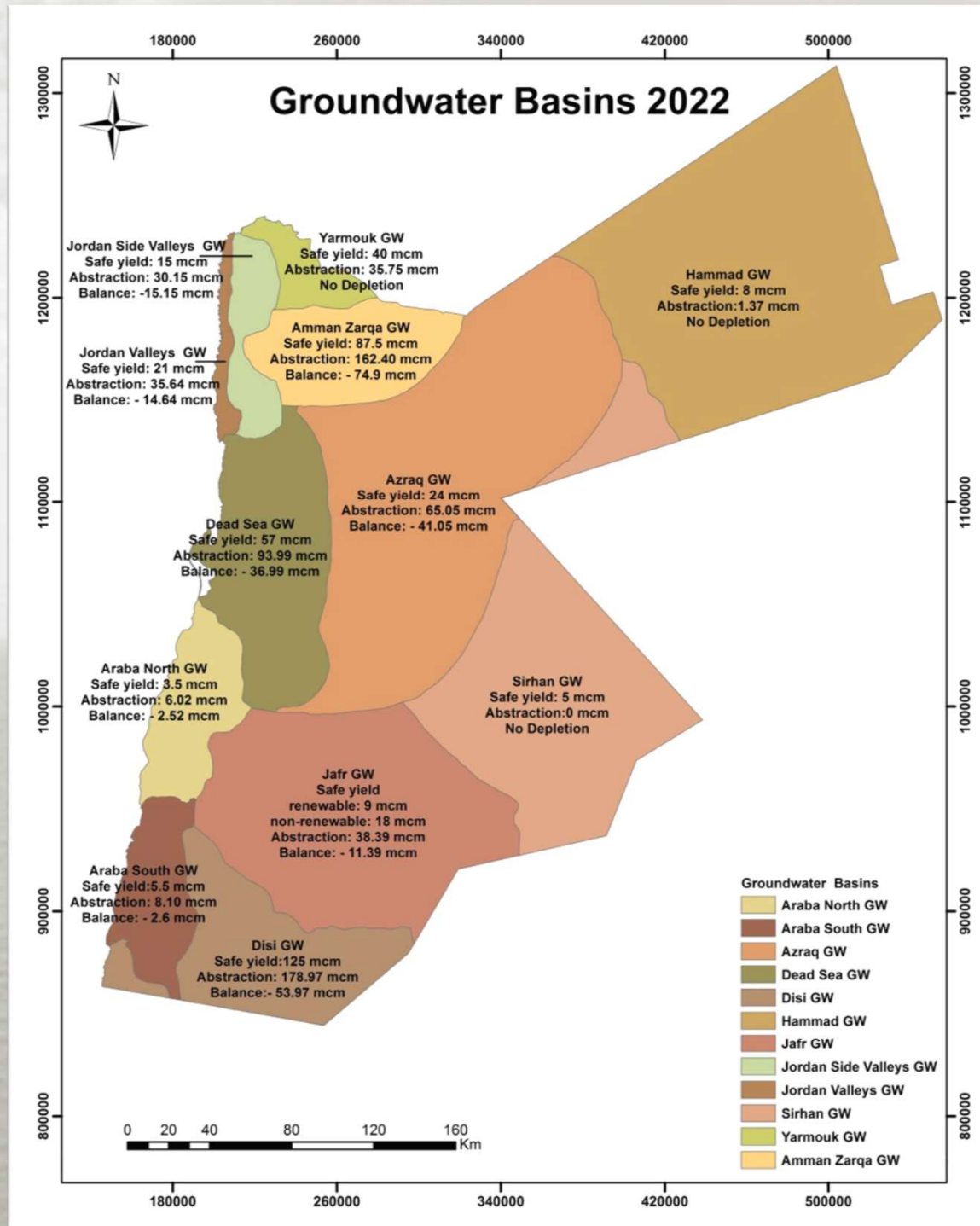
# groundwater extracted from Dead sea basin and its uses 2022

| Industrial |            | nomadic |            | Government domestic |            | private domestic |            |
|------------|------------|---------|------------|---------------------|------------|------------------|------------|
| wells      | production | wells   | production | wells               | production | wells            | production |
| 54         | 8.11       | 9       | 0.22       | 127                 | 45.55      | 17               | 1.35       |

| Total |                  | Government irrigation |            | tourism |            | private irrigation |            |
|-------|------------------|-----------------------|------------|---------|------------|--------------------|------------|
| wells | production (MCM) | wells                 | production | wells   | production | wells              | production |
| 531   | 93.99            | 8                     | 2.12       | 9       | 0.34       | 307                | 36.31      |

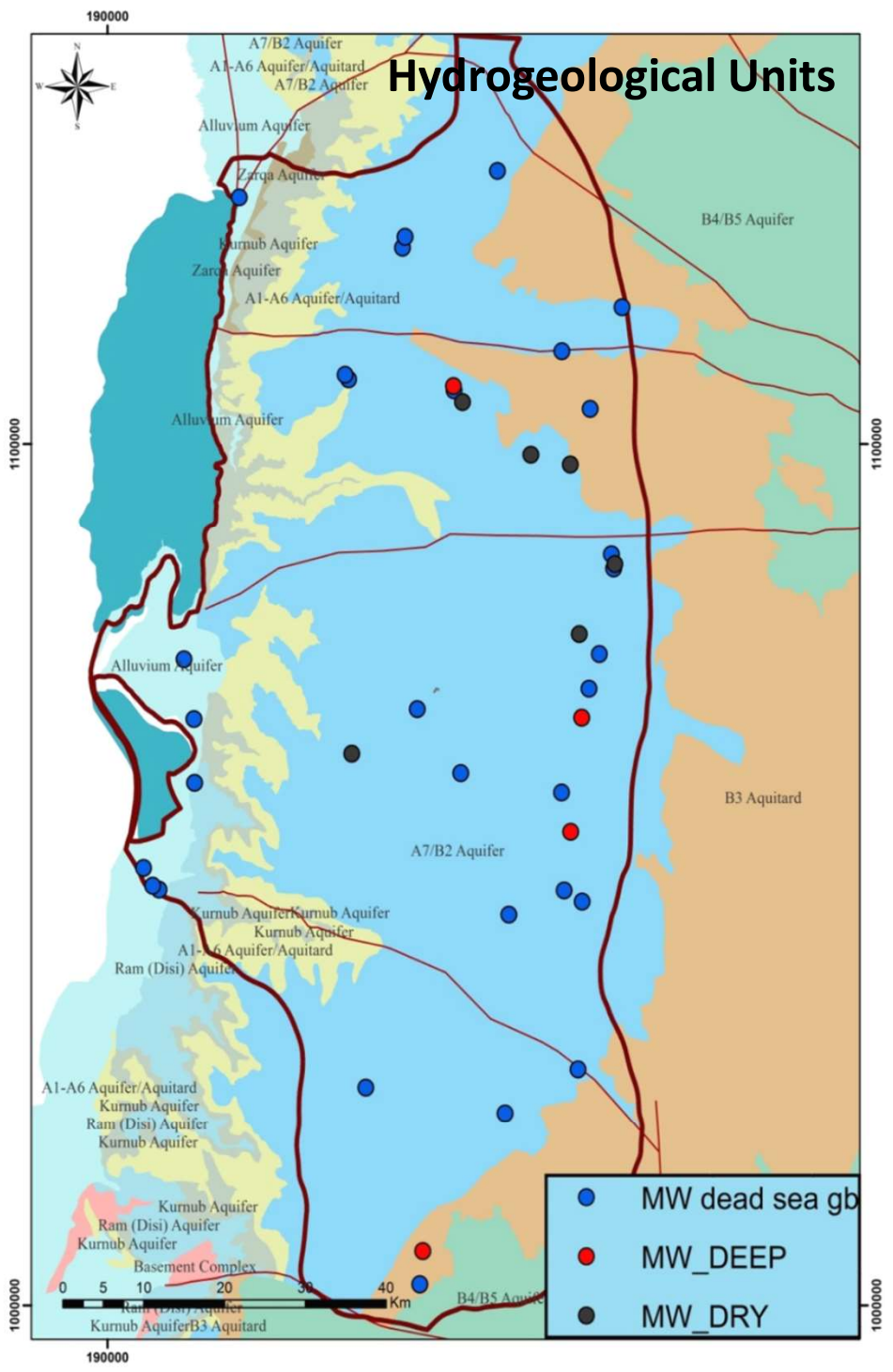


**Distribution of irrigated areas during 2017**

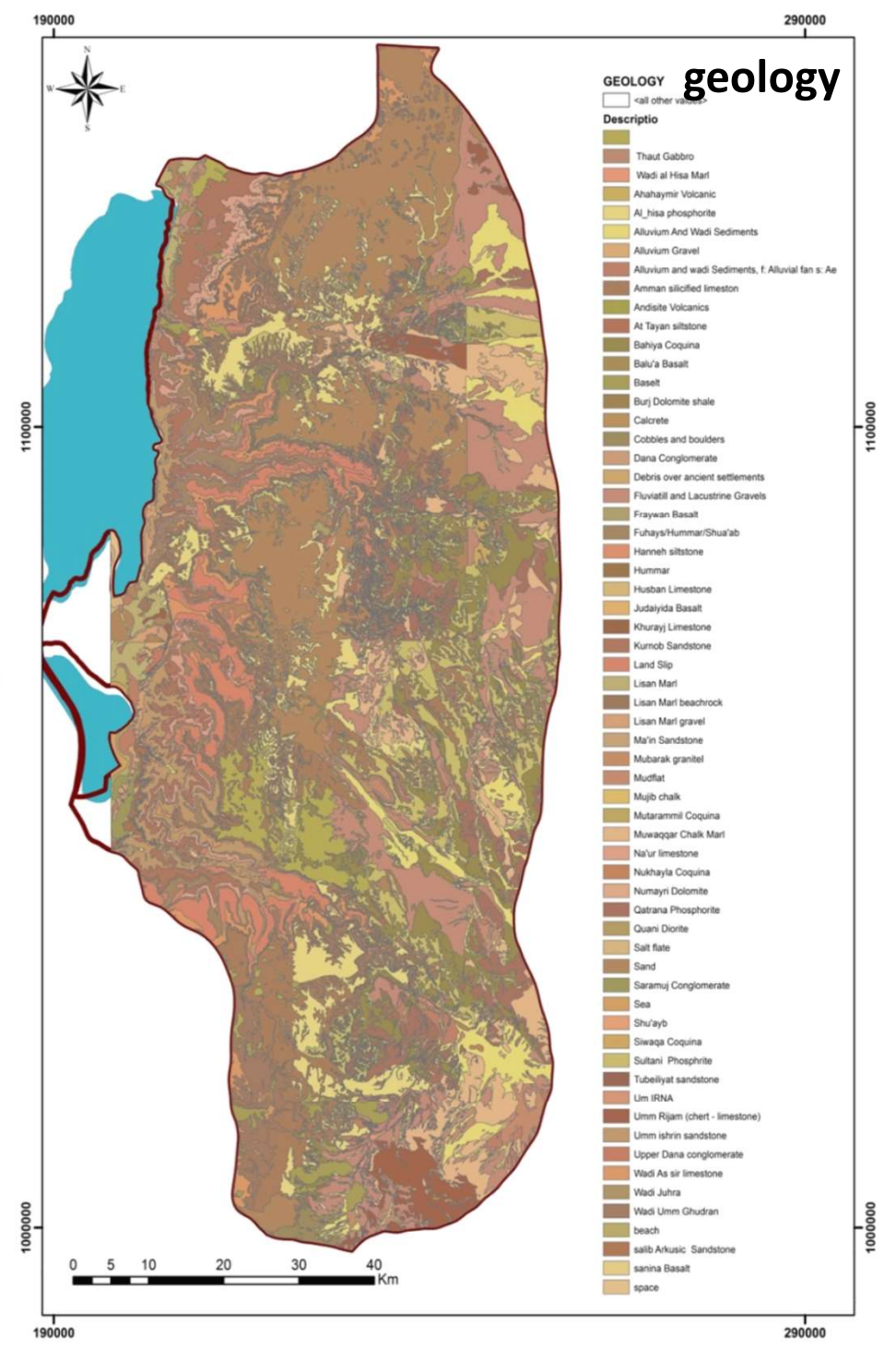


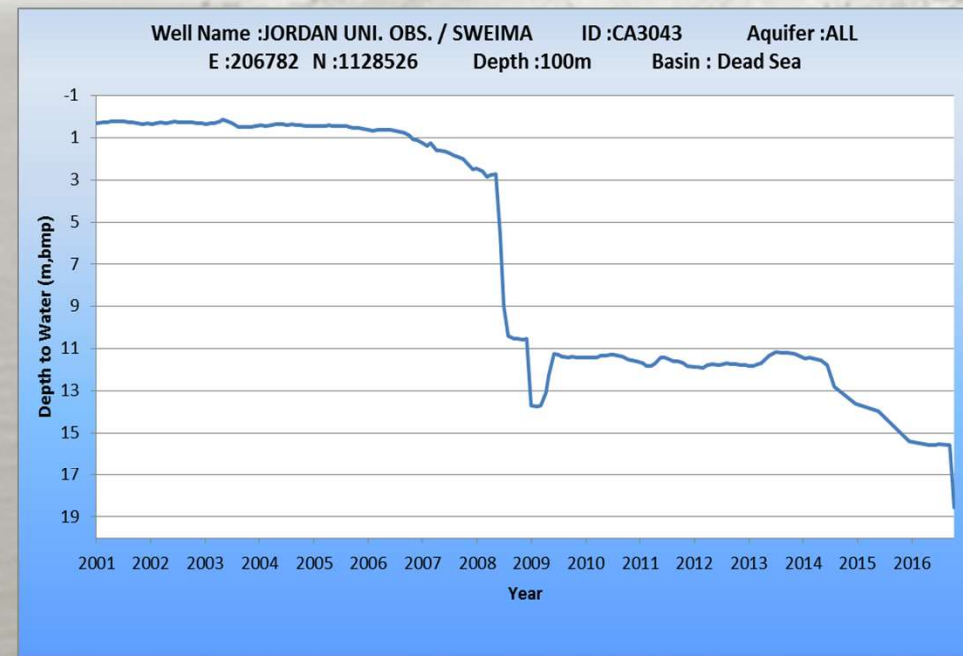
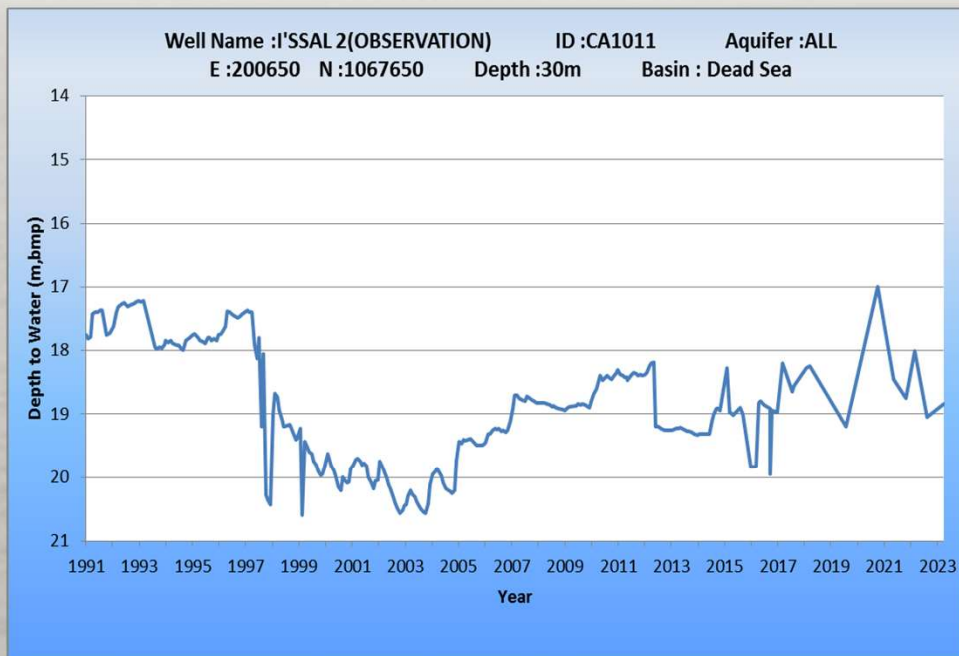
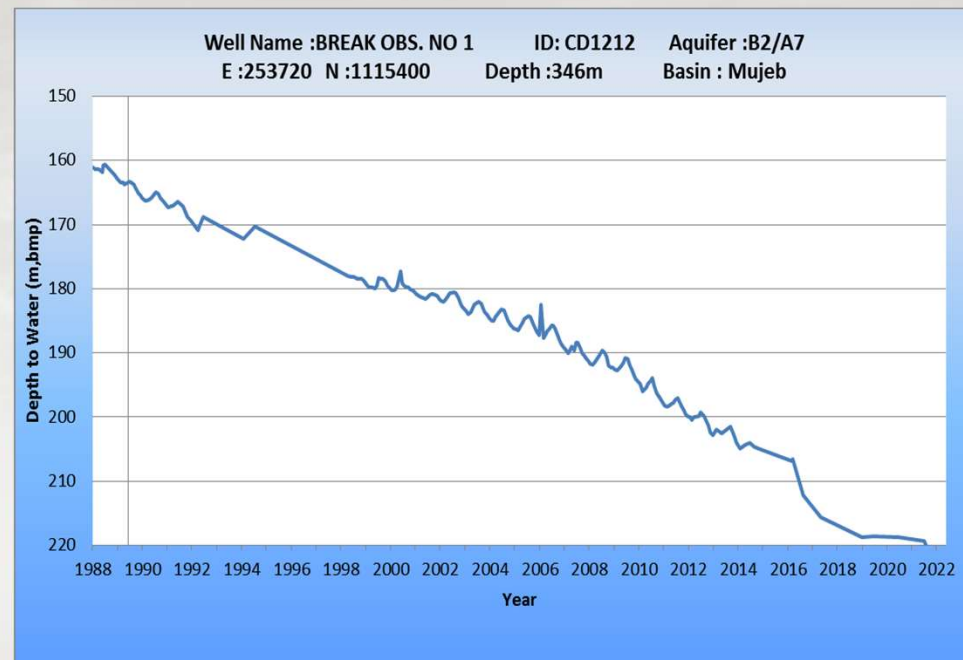
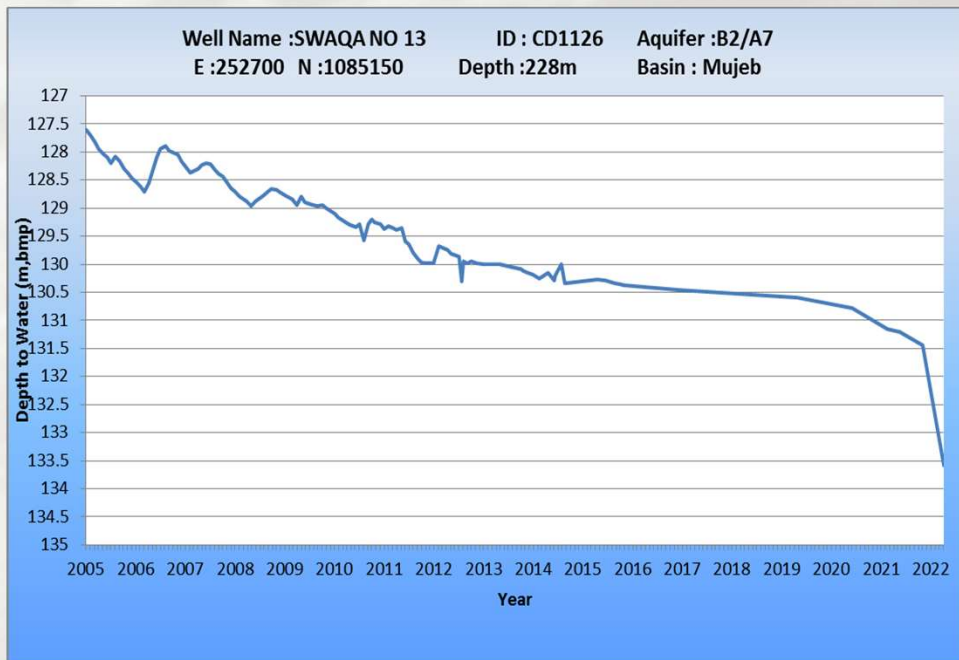
| <b>Groundwater Basin</b>   | <b>Safe Yield (MCM)</b> | <b>Abstraction (MCM)</b> | <b>Deficit (MCM)</b> |
|----------------------------|-------------------------|--------------------------|----------------------|
| <b>Disi &amp; Mudawara</b> | <b>125</b>              | <b>178.97</b>            | <b>-53.97</b>        |
| <b>Amman-Zarqa</b>         | <b>87.5</b>             | <b>162.4</b>             | <b>-74.9</b>         |
| <b>Yarmouk</b>             | <b>40</b>               | <b>35.75</b>             | <b>4.25</b>          |
| <b>Jordan Side Valley</b>  | <b>15</b>               | <b>30.15</b>             | <b>-15.15</b>        |
| <b>Azraq</b>               | <b>24</b>               | <b>65.05</b>             | <b>-41.05</b>        |
| <b>Jafer</b>               | <b>27</b>               | <b>38.39</b>             | <b>-11.39</b>        |
| <b>Jordan Valley</b>       | <b>21</b>               | <b>35.64</b>             | <b>-14.64</b>        |
| <b>Dead Sea</b>            | <b>57</b>               | <b>93.99</b>             | <b>-36.99</b>        |
| <b>Araba South</b>         | <b>5.5</b>              | <b>8.1</b>               | <b>-2.6</b>          |
| <b>Hammad</b>              | <b>8</b>                | <b>1.37</b>              | <b>6.63</b>          |
| <b>Sirhan</b>              | <b>5</b>                | <b>0</b>                 | <b>5</b>             |
| <b>Araba North</b>         | <b>3.5</b>              | <b>6.02</b>              | <b>-2.52</b>         |

# Hydrogeological Units

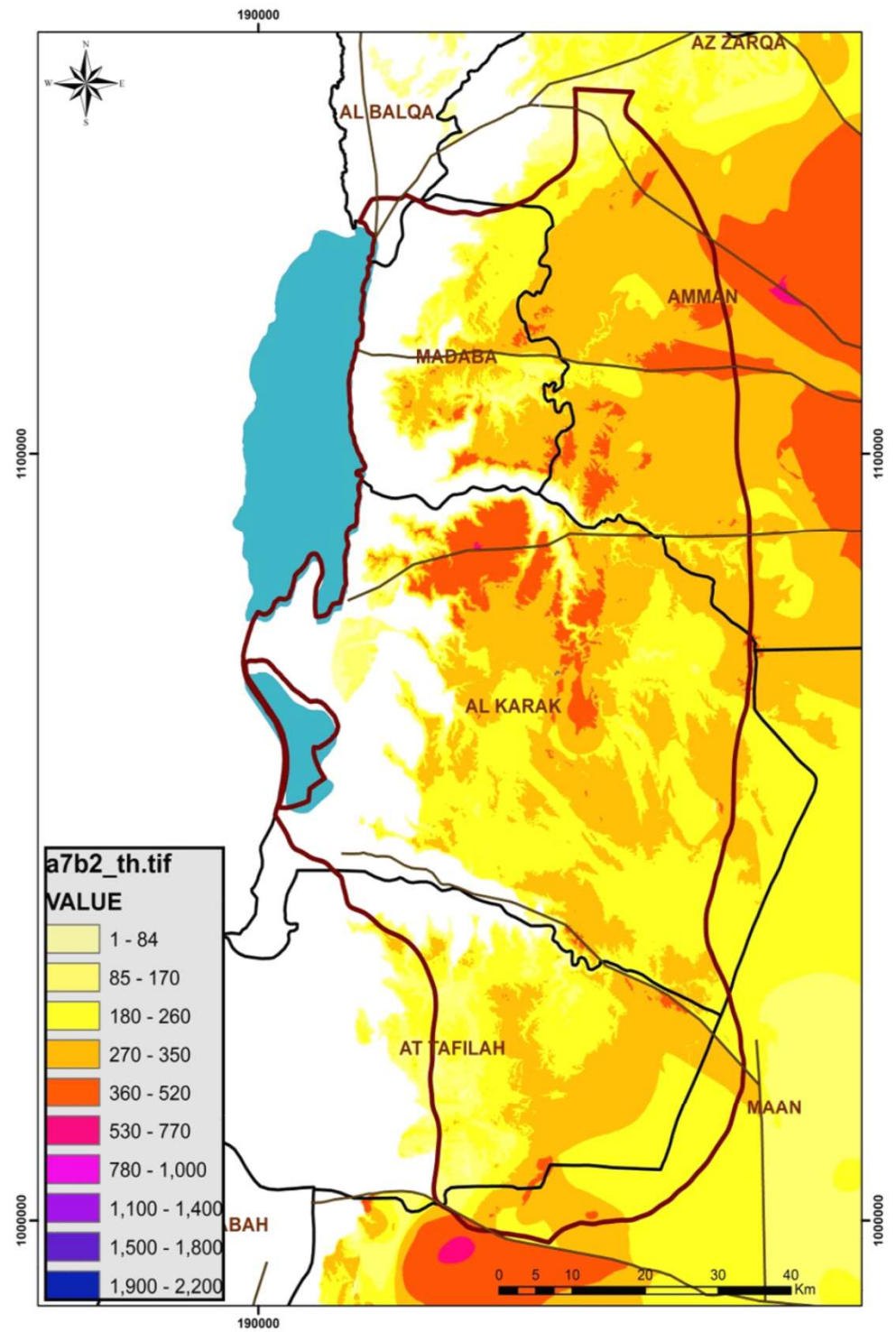
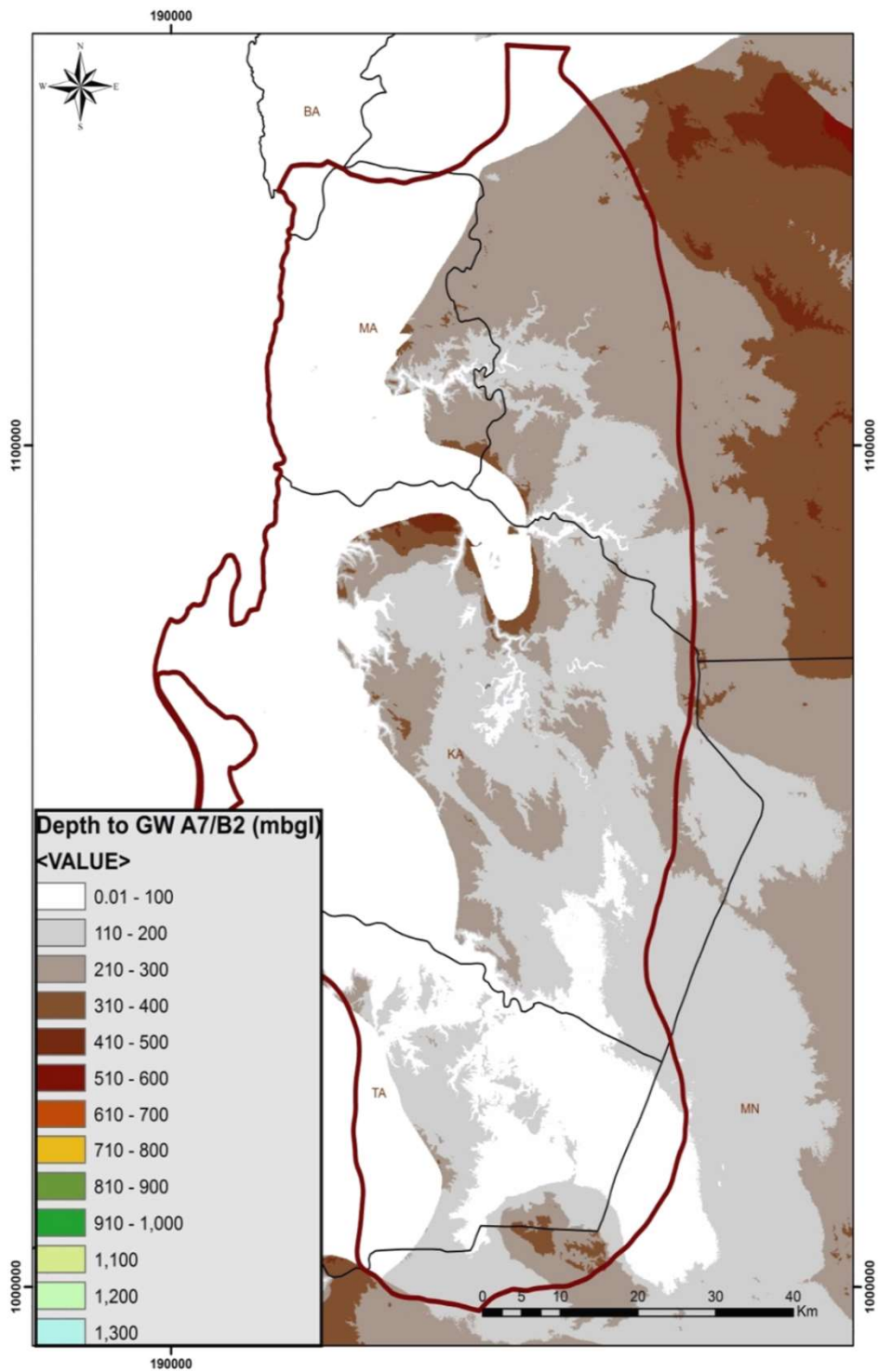


# geology









A scenic landscape featuring a small stream flowing through a rocky area. The water is dark and reflects the surrounding environment. Large, light-colored boulders are scattered throughout the scene, some partially submerged in the water. Lush green vegetation and vibrant pink flowers are visible on the banks, adding a touch of color to the natural setting. In the background, a steep, rocky hillside rises under a clear sky. The overall atmosphere is peaceful and natural.

Thank you