



Funded by  
the European Union

# Green Forward

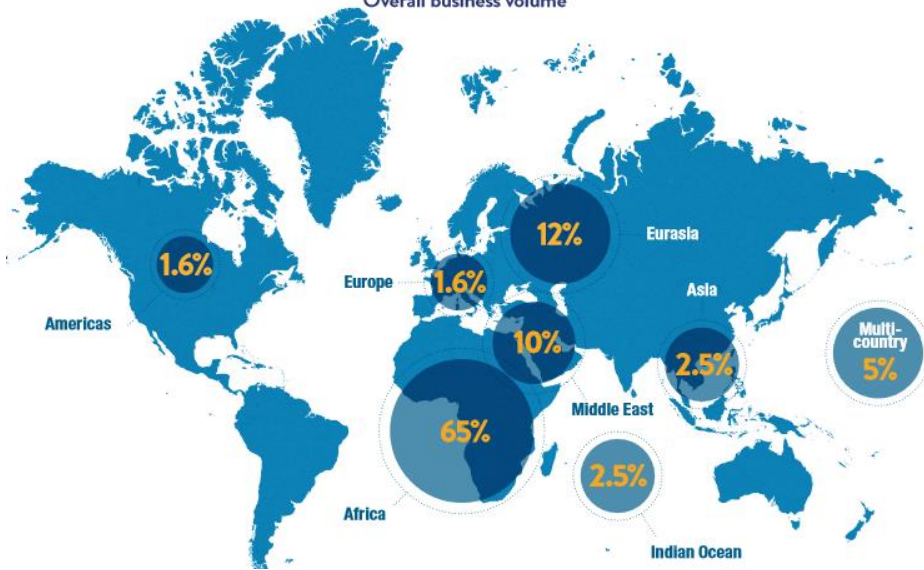
*Advancing Policy Frameworks in The Mediterranean*



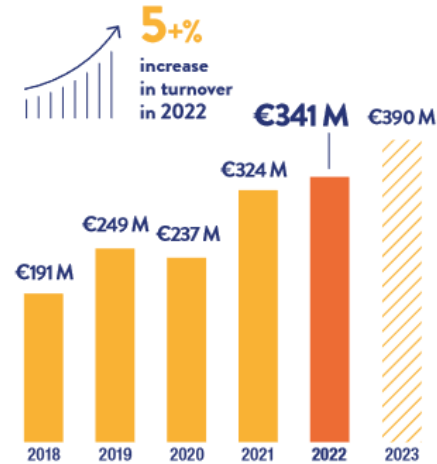
Funded by  
the European Union

# Expertise France | Snapshot

**OVER 60% OF  
OUR BUSINESS IN AFRICA**  
Overall business volume



## Confirmed growth



**380+** current projects  
(172 new projects signed in 2022)

**220** international technical experts (ITEs) deployed  
(up 50% in 2022)

**145** countries where we operate worldwide

**100,000** person-days of expertise

**20** projects that act as catalysts to fight pandemics and strengthen health systems, funded through *L'Initiative*

## Financing from various sources



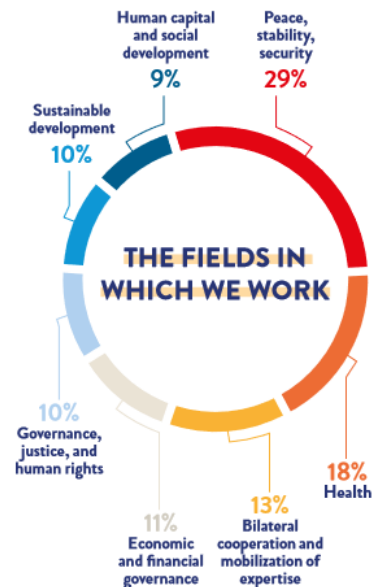
## Our teams



**625**  
employees at our  
headquarters



**1,000**  
staff  
in the field





## Green Forward Project - Snapshot

**TITLE** *Green Forward | Advancing Policy Frameworks in The Mediterranean*

**DONOR** *European Union - DG NEAR*

**LOCATION** *Regional Project*  
*- **North Africa:** Morocco, Algeria, Tunisia, Libya, Egypt*  
*- **Middle East:** Lebanon, Palestine, Jordan*

**MAIN OBJECTIVE** *Contribute to the transition to a green and circular economy in the southern neighborhood by promoting, developing and strengthening sound policies and applicable legislation.*

**DURATION** *4 years (January 2024 – December 2027)*

**BUDGET** *€4 Million*

**PROJECT TEAM LOCATION** *Amman, Jordan*



Funded by  
the European Union

# GOVERNANCE

## Implementing Agencies Consortium



Donor | EU | DG NEAR



**Expertise France**  
Component 1 | Macro level



**SPARK**  
Component 2 | Meso level



**UNIDO**  
Component 3 | Micro level



## OBJECTIVES

### Outcome 1

- Public authorities at regional level share a common vision of GCE, inspired by EU best practice.

### Outcome 2

- GCE principles, inspired by best practices in European policies, are integrated into the national policy and regulatory frameworks of countries in the southern neighborhood.

### Output 1.1

- Regional stakeholders are made aware of GCE opportunities and informed about the Green Pact and other related EU initiatives.

### Output 1.2

- Political dialogue is encouraged at regional level between political decision-makers and their EU counterparts.

### Output 1.3

- Best practices are shared between stakeholders (public authorities, private sector, civil society, research) at regional level.

### Output 2.1

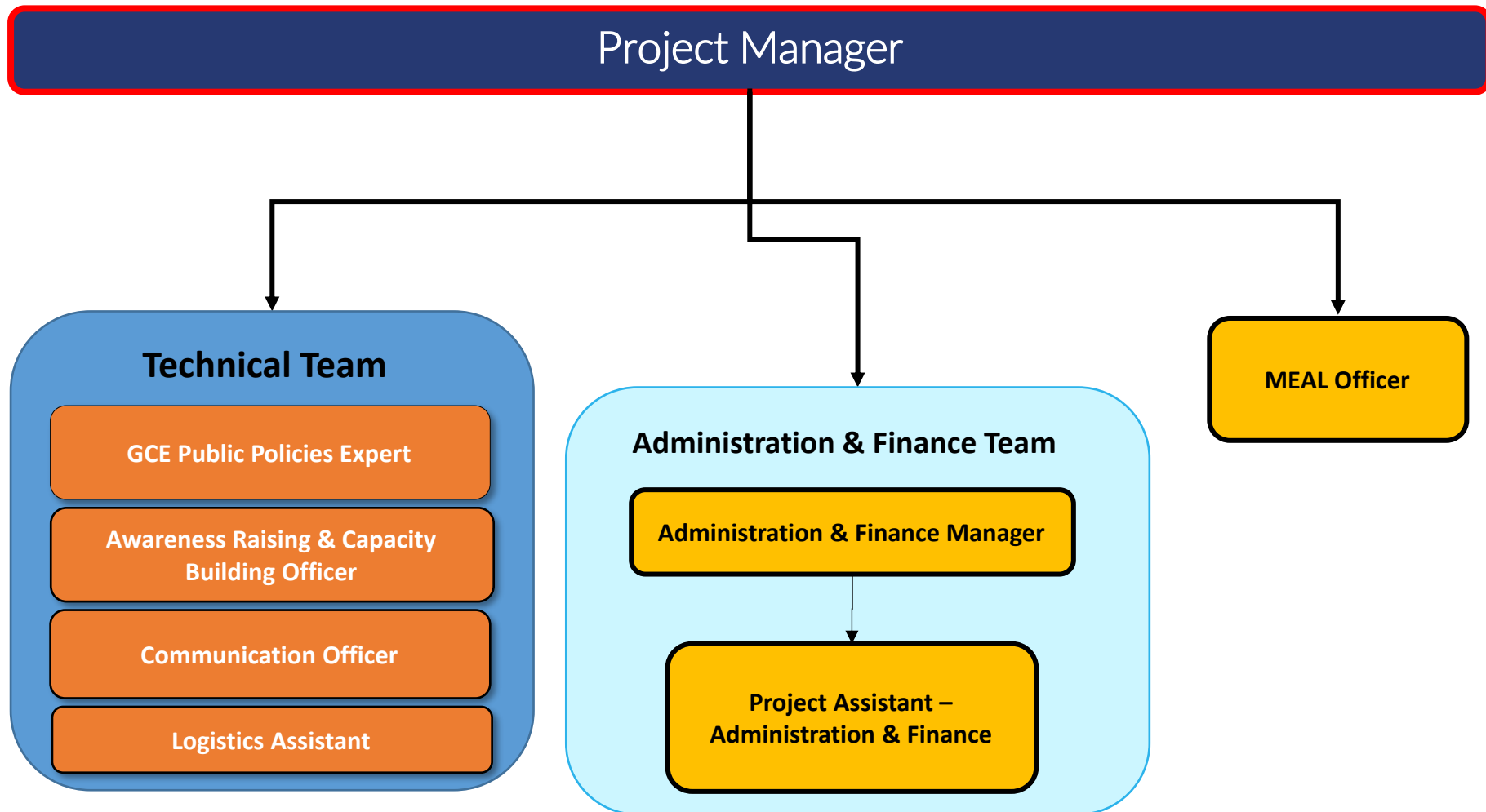
- The countries of the Southern Neighborhood have a roadmap for integrating GCE concepts into their policy and regulatory frameworks.

### Output 2.2

- Countries are helped to improve their policy and regulatory frameworks on the basis of the priorities.



## PROJECT TEAM | AMMAN, JORDAN





Funded by  
the European Union



# Thank You!

Mohammad R. Mansour | [mohammad.mansour@expertisefrance.fr](mailto:mohammad.mansour@expertisefrance.fr)  
Athari Alsadud | [athari.al-sadud@expertisefrance.fr](mailto:athari.al-sadud@expertisefrance.fr)